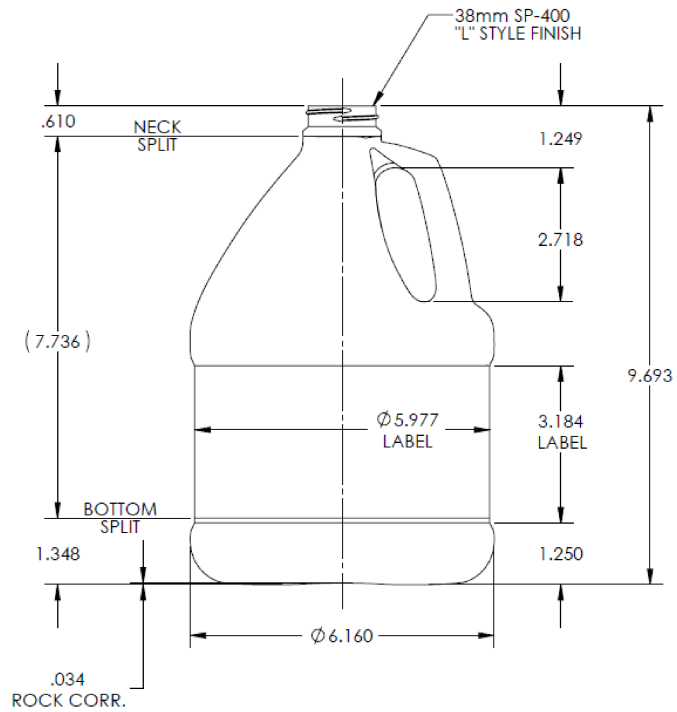


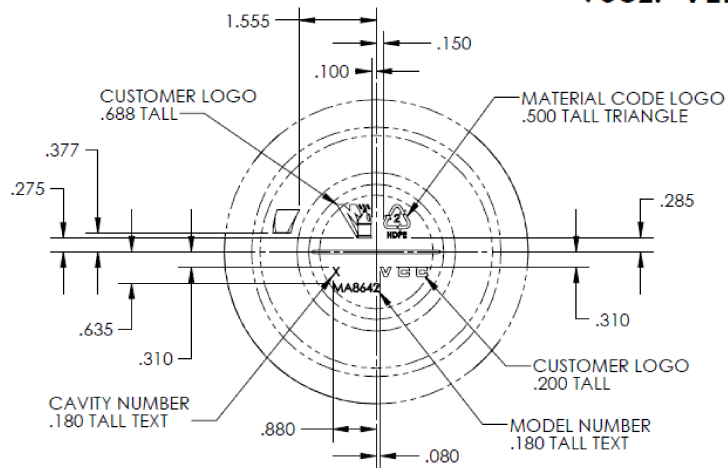
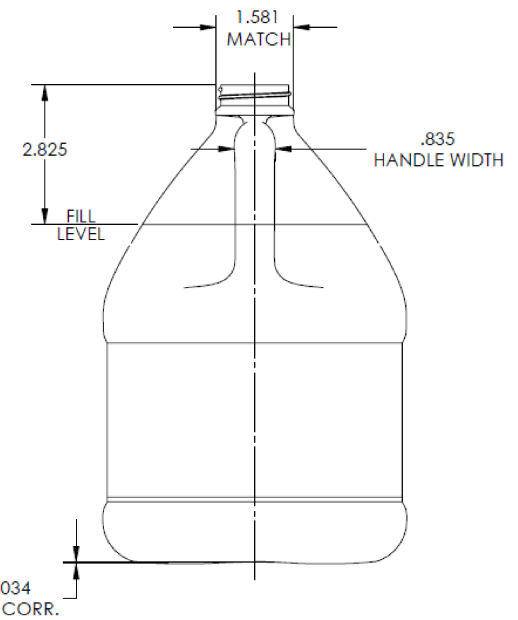
128oz. VERSION

Notes:

- 1) Container Weight -- 99.6 grams
- 2) Material -- HDPE
- 3) Overflow Capacity -- 135.3 oz.
- 4) Fill Capacity -- 128.0 oz.
- 5) Tolerances Unless Specified:
 Vertical -- ±.080
 Horizontal -- ±.090
 Volumetric -- ±1.50 oz.
- 6) Bottles to be Checked Aged with 20°C Water
- 7) Estimated Bulge -- 0 oz.



96oz. VERSION



****ALL ENGRAVING RAISED .008-.010****

Notes:

- 1) Container Weight -- 82.0 grams
- 2) Material -- HDPE
- 3) Overflow Capacity -- 103.3 oz.
- 4) Fill Capacity -- 96.0 oz.
- 5) Tolerances Unless Specified:
 Vertical -- ±.060
 Horizontal -- ±.080
 Volumetric -- ±1.01 oz.
- 6) Bottles to be Checked Aged with 20°C Water
- 7) Estimated Bulge -- 0 oz.

DISCLAIMER

THIS INFORMATION IS PROVIDED AS A GENERAL GUIDE, INCLUDING DIMENSIONS. IT IS THE CUSTOMER'S RESPONSIBILITIES TO SELECT THE PROPER CONTAINER FOR PRODUCT AND APPLICATION COMPATIBILITY.

DISTRIBUTED BY:



REF NO.:

DWG10402

DESCRIPTION:

128 oz HDPE Industrial Round, 38-400