



Reverse COLORING & DOODLING

There are no strict rules in doodling, just let your creativity guide you. Reverse doodling can create striking and surprising effects, revealing hidden elements and layers of depth to your artwork. Experiment with different techniques and enjoy the process as you create something truly special.

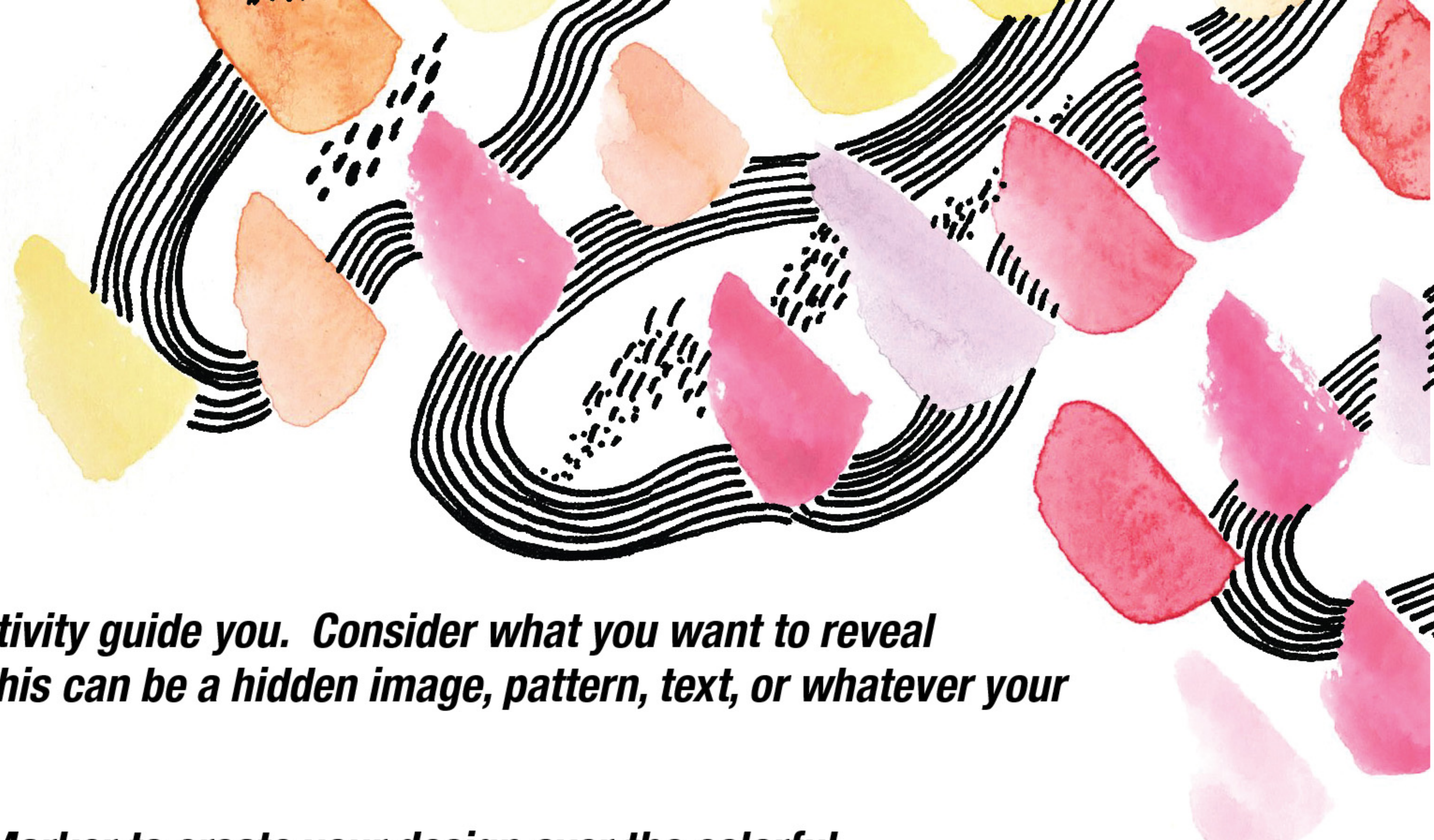
↙ Before



After ↗

Use the watercolor as inspiration and unleash your imagination.





Getting Started:

Plan your design or let your creativity guide you. Consider what you want to reveal through your reverse doodling. This can be a hidden image, pattern, text, or whatever your imagination decides.

Use the provided Pitt Pen Artist Marker to create your design over the colorful backgrounds.

Techniques to try:

Reveal a hidden image *Draw the outline of an object or image that wasn't visible in the colorful background.*

Patterns *Create patterns like cross-hatching, stippling, swirls, or geometric shapes.*

Text or Lettering *Spell out words or phrases in a calligraphic style or your own handwriting.*

Outlines *Trace the contours and outlines of objects in the paintings, highlighting their shapes.*

Florals *Add whimsical flowers, leaves, and vines. Vary the sizes to add interest and dimension.*

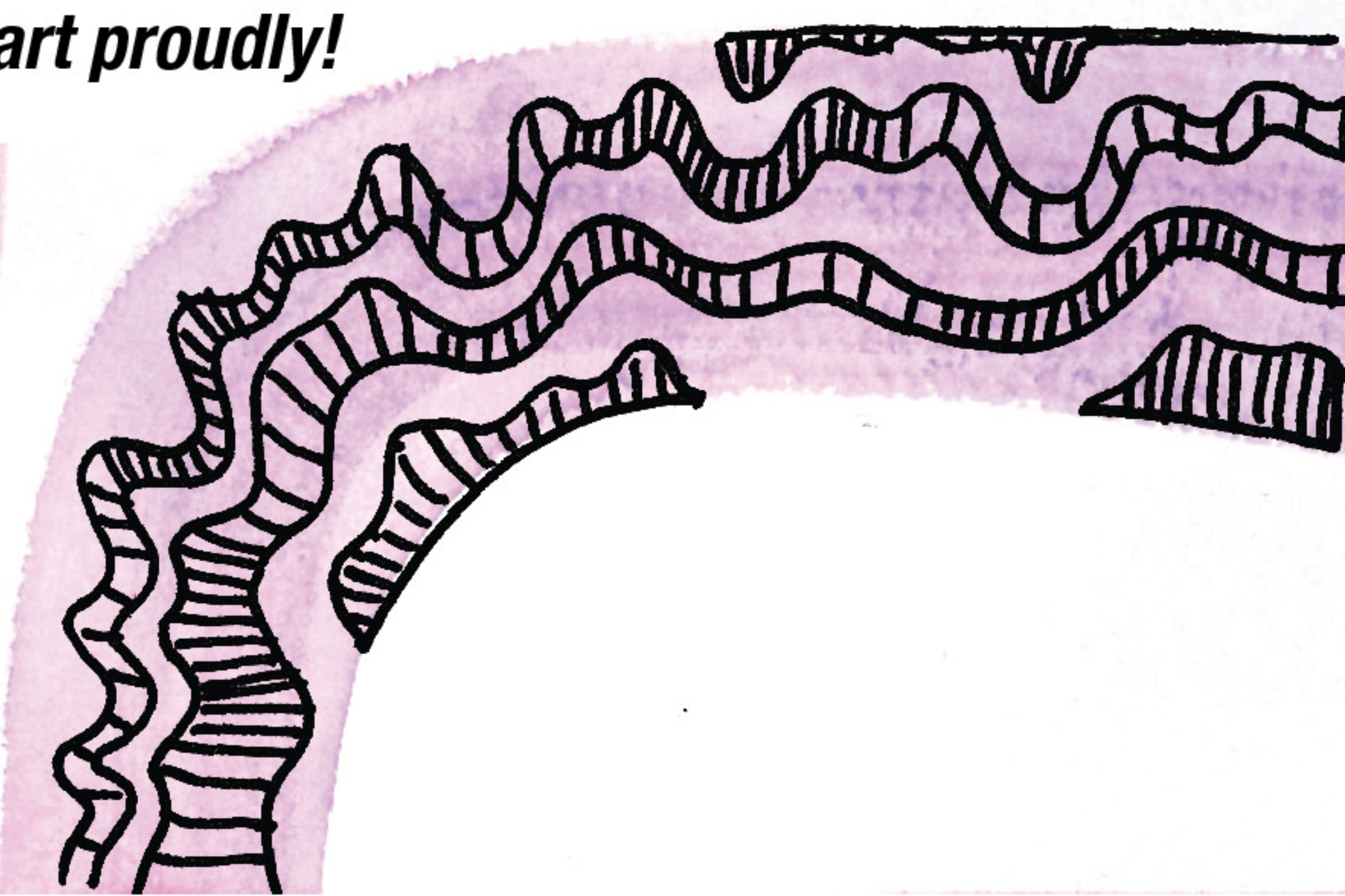
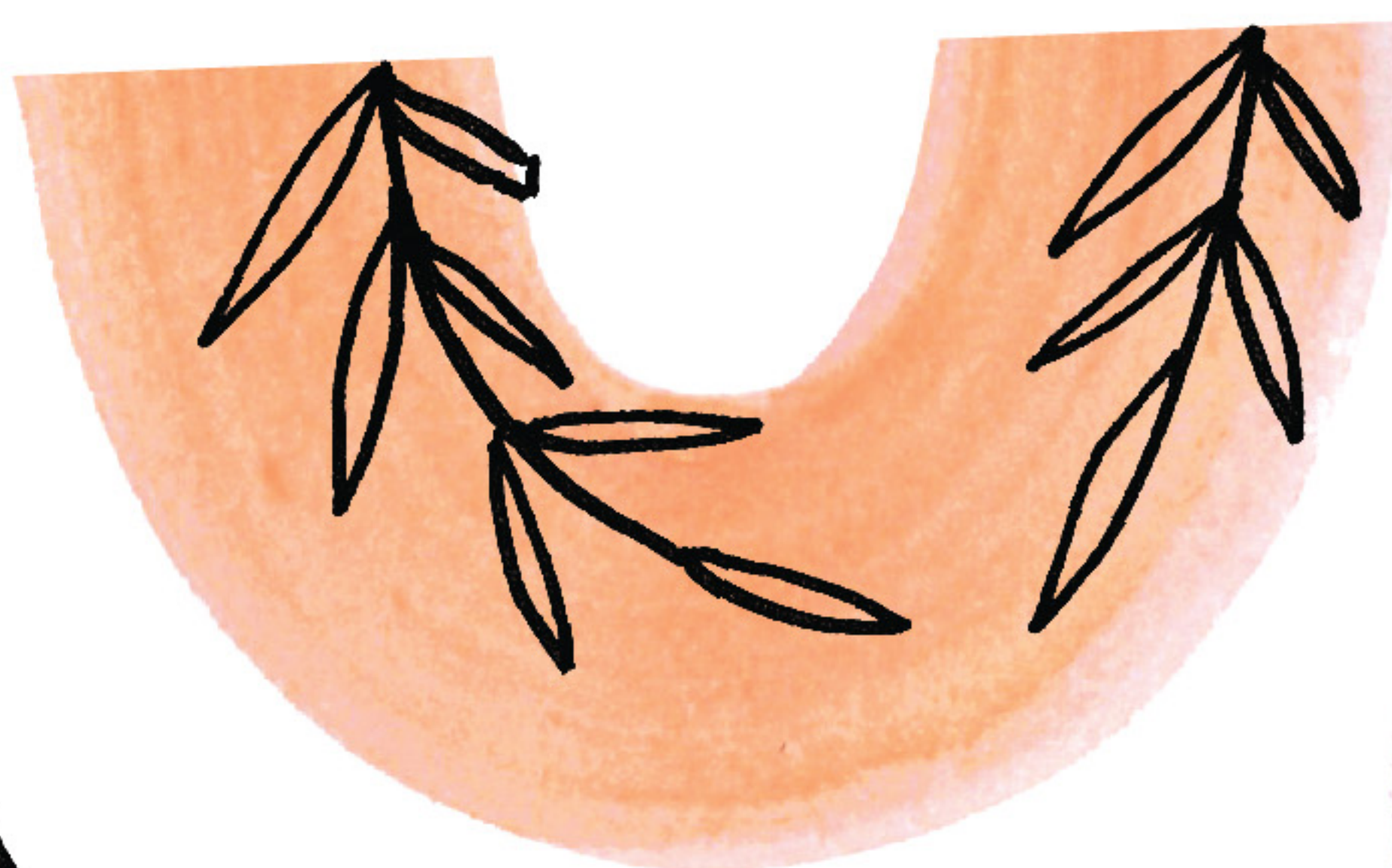
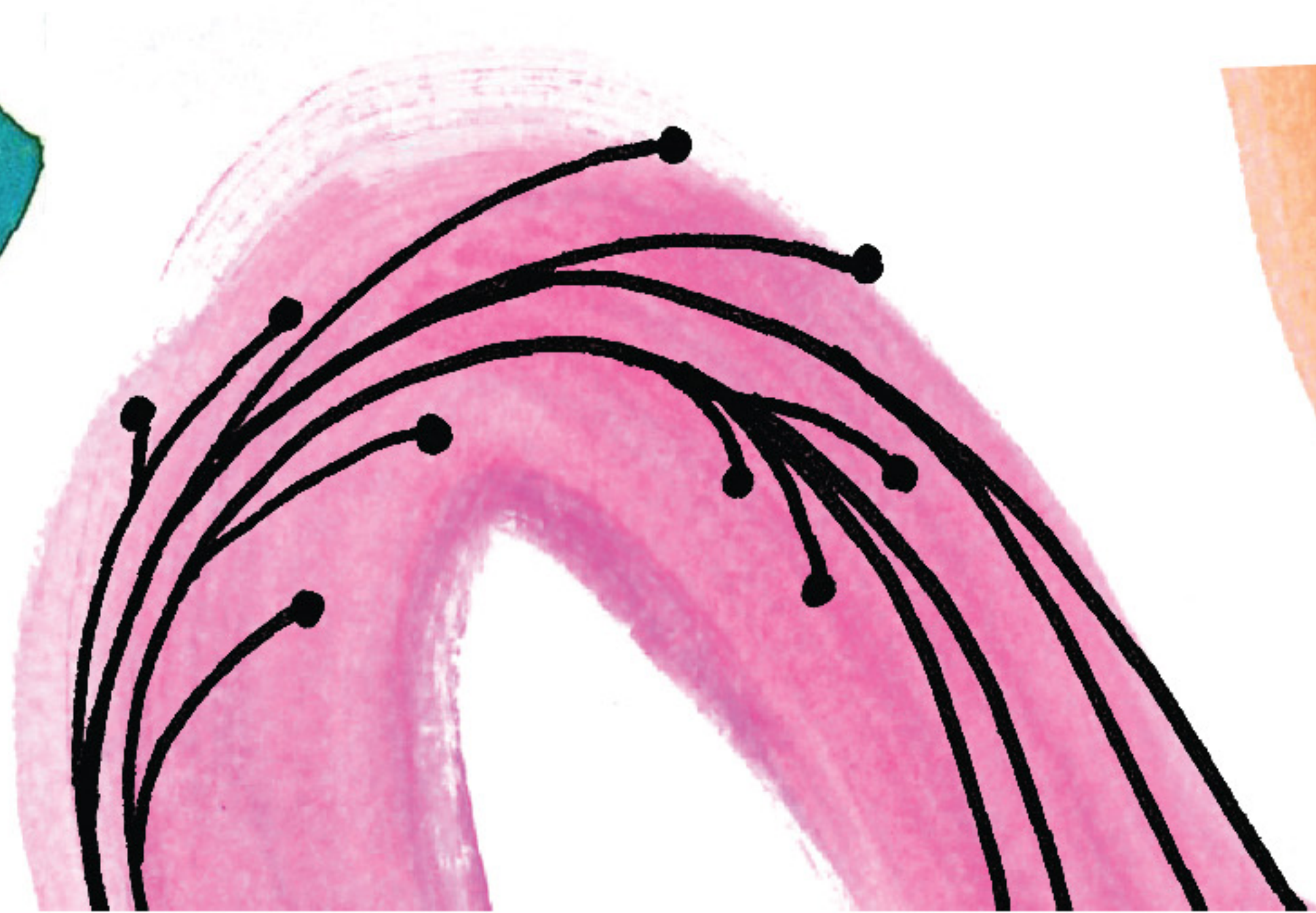
Whimsical creatures *Draw imaginative creatures or characters that fit the theme of your painting.*

Composition / Balance:

Make sure your doodles enhance the overall painting without overpowering it. The contrast between the black marker and the watercolor makes this technique unique.

Frame & Display:

After you've finished doodling, step back and assess your artwork. Make any final adjustments and touch-ups. The final artwork measures 8" x 10" which is a standard frame size. Pick one up at your local craft store and display your art proudly!



Techniques in action:



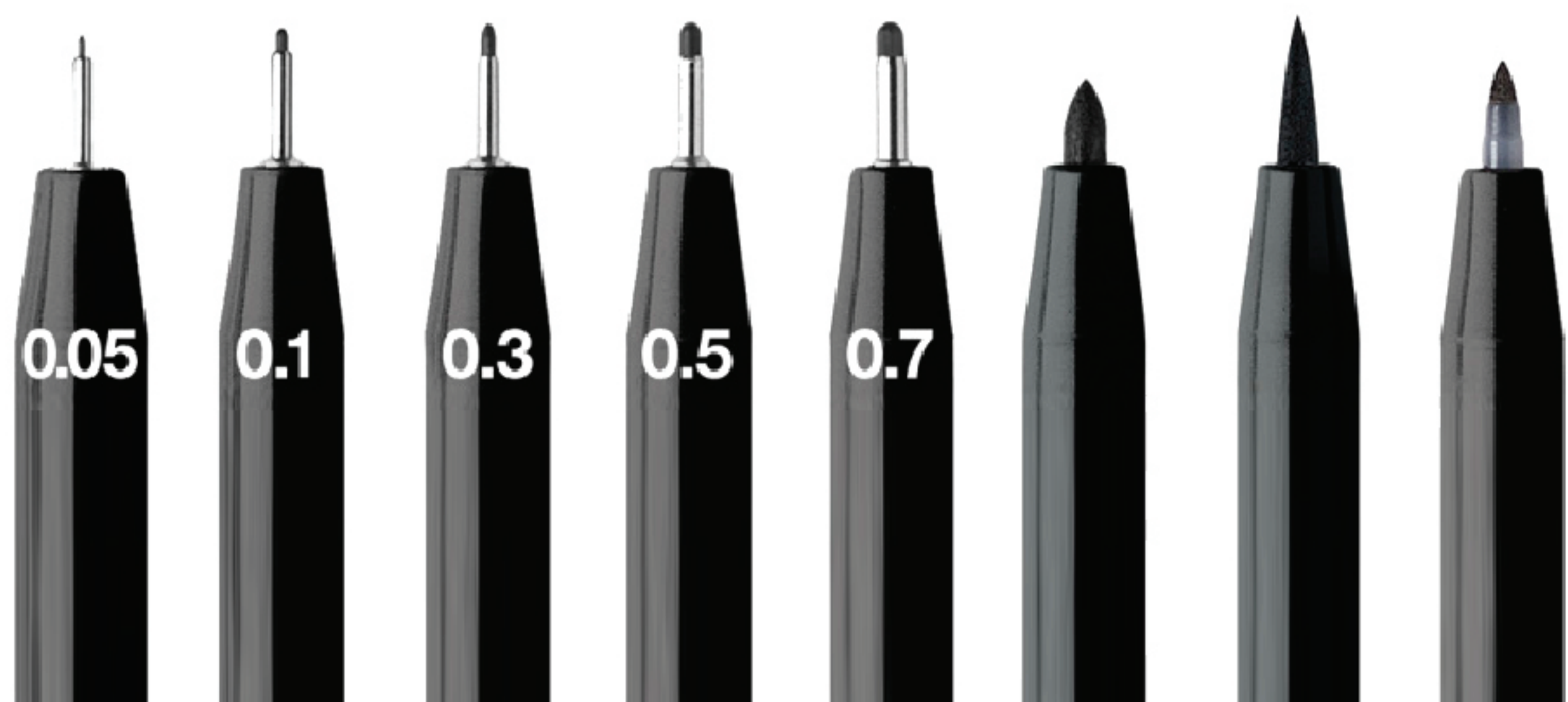
Included:
Pitt Artist Marker
Fineliner 0.3

thick & thin
lines

Try our other amazing
Artist Markers!



XXS XS S F M 1.5 B FM



0.05 0.1 0.3 0.5 0.7