

P
 DRAWING NUMBER S1074
 SIZE A
 SCALE: NONE
 DATE: 2-27-85
 APPROVED BY: TD
 CHECKED BY: JCS
 DRAWN BY: VGD
 1074
 FIGURE NUMBER

WE CAN ASSUME NO RESPONSIBILITY FOR USE OF SUPERSEDED OR VOID DATA

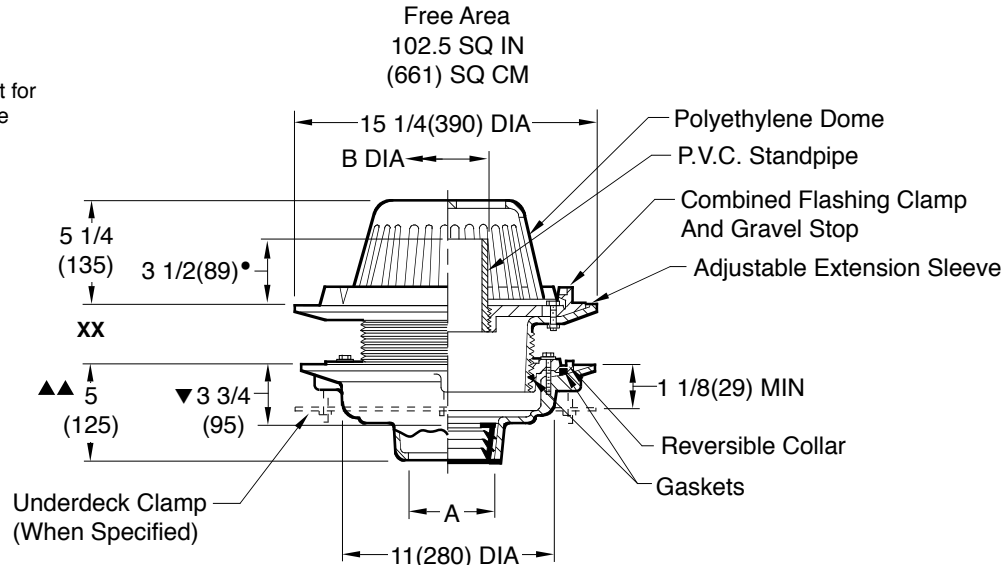
DIMENSIONS ARE SUBJECT TO MANUFACTURERS TOLERANCE AND CHANGE WITHOUT NOTICE

LARGE GENERAL PURPOSE ROOF DRAINS

ADJUSTABLE TOP WITH STANDPIPE

FUNCTION: Used in flat roofs of any construction where a constant height of water is desired on the roof. It is also used on conventional roofs as a safety overflow, which receives water only when the build-up is greater than the setting of the cut standpipe. Standpipe type water dam can be cut to achieve various water depths on the roof. Wide clamping surface holds flashing and roofing materials without puncturing. Large low profile dome provides sufficient free area for quick drainage of rain water and protects the drain sump and connected piping from the intrusion of debris.

• Maximum Height for 8(200) Standpipe is 2 1/4(57)



- ▼ This Dimension to Internal Stop of Speedi-Set® Gasket.
- ▲▲ Same for Caulk, NO-HUB and Speedi-Set®. 3 3/4(95) for Threaded.

| | | | | | | |
|--------------|--------|--------|---------|---------|---------|---------|
| A(Pipe Size) | 02(50) | 03(75) | 04(100) | 05(125) | 06(150) | 08(200) |
| B (DIA) | 4(100) | 4(100) | 4(100) | 6(150) | 6(150) | 8(200) |

| | XX | MIN | MAX |
|---------------|-----------|-----------|-----|
| Low Position | 1 1/4(32) | 2 1/2(64) | |
| High Position | 2 1/4(57) | 4(100) | |

- Fig. 1074C CAULK OUTLET
- Fig. 1074Y NO-HUB OUTLET

recommended deck opening

| | |
|---------------|-------------|
| with suffix-R | 17(430) DIA |
| less suffix-R | 14(355) DIA |

REGULARLY FURNISHED:
 Duco Cast Iron Body with Adjustable Extension Sleeve, Reversible Collar, P.V.C. Standpipe, Polyethylene Dome and Combined Flashing Clamp and Gravel Stop.

- VARIATIONS:**
- Expansion Joint (Specify Fig. 1710)
 - Extension (Specify Height) -E
 - E02, 2"(51)
 - E04, 4"(100)
 - E06, 6"(150)
 - "L" Shaped Underdeck Clamp -CL
 - L Speedi-Set® Service Weight 02(50), 03(75) & 04(100) sizes only
 - LXH Speedi-Set® Extra Heavy 02(50), 03(75) & 04(100) sizes only
 - Secondary Flashing Clamp -C2
 - Sump Receiver -R
 - Underdeck Clamp -C
 - Vandal Proof Dome -U
 - T Threaded Outlet

- OPTIONAL MATERIALS:**
- ▲ Aluminum Dome -AD
 - Bronze Standpipe -BZS
 - ▲ Cast Iron Dome -CID
 - Cast Iron Standpipe -CIS
 - Galvanized Cast Iron Body & Collar -G
 - ▲ Galvanized Cast Iron Dome -CIDG
 - ▲ Rough Bronze Dome -RBD

▲ **Optional domes' free area are as follows:**
 Aluminum 98 (632)
 Cast Iron 80 (516)
 Bronze 95 (613)

NOTE: Dimensions shown in parentheses are in millimeters.

| | | | | | | | |
|------------------|--|---|-----------------------|----------------------|------------------|----------------------|------------------------------|
| P N M L | 3-8-23 11-8-22 7-30-19 10-27-15 | Added ® to "Speedi-Set" Added • Note Removed NOTE Added Flow Rate Note | KK KK MW TBW | CL CL CL BW | WEIGHT POUNDS | VOLUME CUBIC FEET | FIGURE NUMBER 1074 |
| REV. | DATE | DESCRIPTION | BY | CKD. BY | | | |