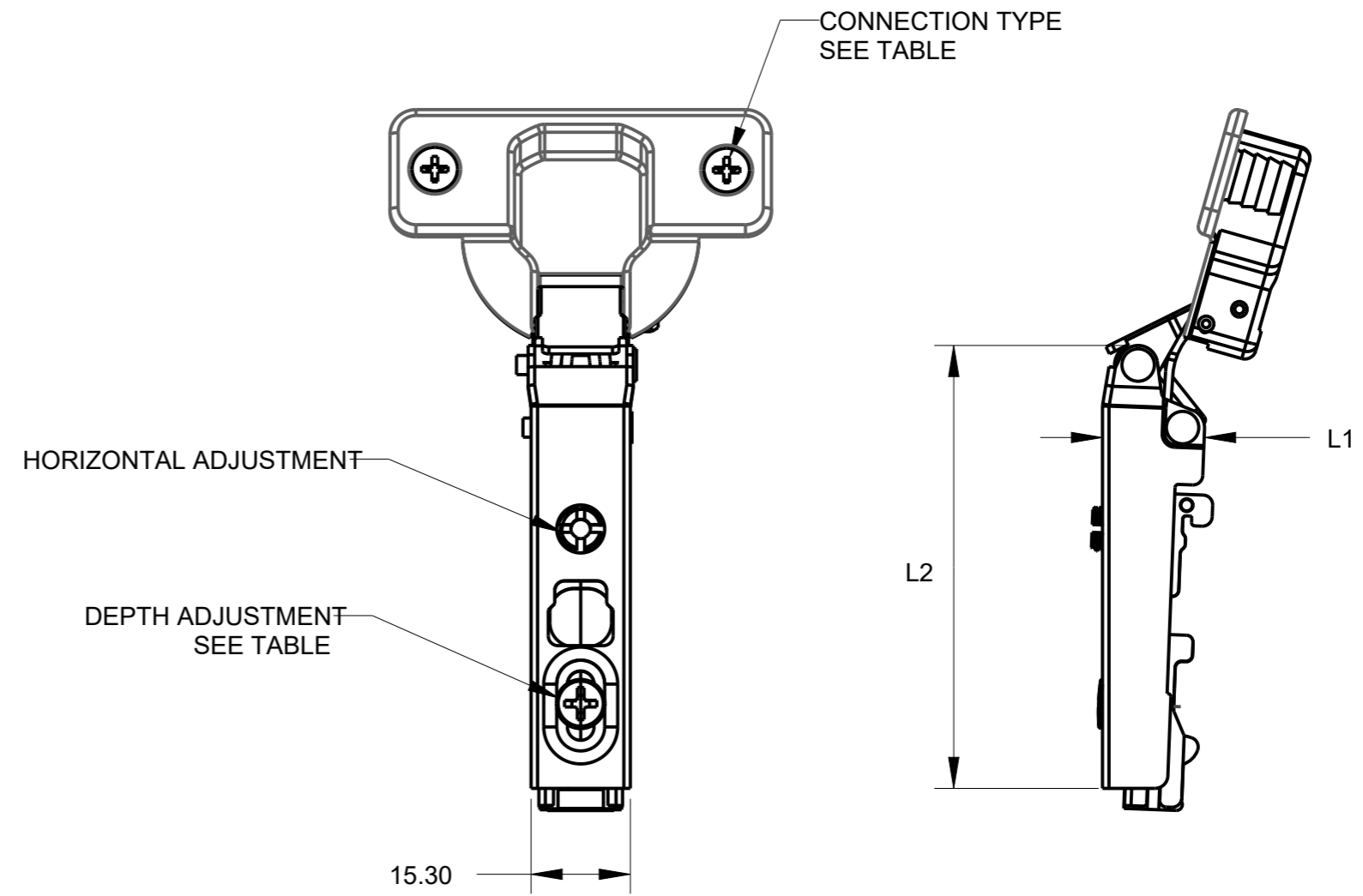
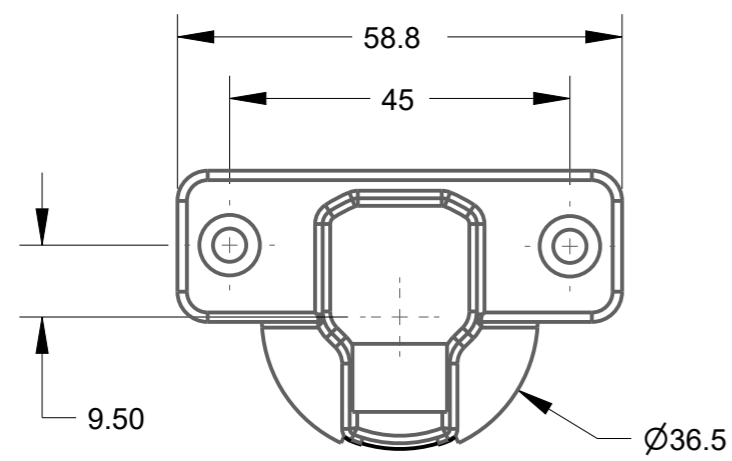


ITEM #	OPENING ANGLE	CRANK	DEPTH ADJUSTMENT	CONNECTION TYPE	CLOSE TYPE	L1	L2
500.0161.75	90	0	CAM	PRESS-IN DOWELS	SELF	15.7	68.4
500.0535.75	110	0	CAM	NO DOWELS	SELF	15.7	68.4
500.0181.75	110	0	CAM	PRESS-IN DOWELS	SELF	15.7	68.4
500.0186.75	110	0	CAM	EASY-FIX DOWELS	SELF	15.7	68.4
500.0534.75	110	0	SCREW	NO DOWELS	SELF	15.7	68.4
500.0171.75	110	0	SCREW	PRESS-IN DOWELS	SELF	15.7	68.4
500.0536.75	110	9	CAM	NO DOWELS	SELF	20.7	68.3
500.0179.75	110	9	CAM	PRESS-IN DOWELS	SELF	20.7	68.3
500.0279.75	110	9	SCREW	PRESS-IN DOWELS	SELF	20.7	68.3
500.0537.75	110	15	CAM	NO DOWELS	SELF	27	68.3
500.0280.75	110	15	CAM	PRESS-IN DOWELS	SELF	27	68.3
500.0141.75	110	0	CAM	PRESS-IN DOWELS	FREE SWING	15.7	68.3



HARDWARE RESOURCES RESERVES THE RIGHT TO CHANGE SPECIFICATIONS WITHOUT NOTICE. IN CASE OF A DISCREPANCY, ACTUAL PART GEOMETRY SUPERSEDES THIS DOCUMENT.

THE INFORMATION CONTAINED WITHIN THIS DRAWING IS THE SOLE PROPERTY OF HARDWARE RESOURCES INC. ANY REPRODUCTION IN PART OR WHOLE WITHOUT WRITTEN PERMISSION OF HARDWARE RESOURCES INC. IS PROHIBITED.

DOCUMENT STATUS Released	
UNLESS OTHERWISE SPECIFIED DIMENSIONS ARE IN MILLIMETERS (MM)	
MATERIAL STEEL	FINISH ZINC
THIRD ANGLE PROJECTION	DATE 13NOV2023

DESCRIPTION		
HINGE, 500, 90 DEG AND 110 DEG		
DRAWING NUMBER 500-90DEG_110DEG_CSR		REV A
SIZE A3	SCALE 1.000	SHEET 1 / 1