

How to Apply a Magnetic Snap with Prongs

Magnetic fasteners are great for totes, purses and even apparel! Round snaps are available in two sizes – 1/2" and 3/4" diameter. Square styles are 3/4". The process of attaching magnetic snaps is pretty easy. Mark the position, cut the slits for the prongs. Mount the pieces and fold the prongs. Done. But there are tips and secrets to having the finished item wear well.

You will need:

- 1 set of magnetic snaps
- Sharp scissors
- Pliers
- Marking pencil
- Your project
- Iron-on interfacing

Optional for Totes & Purses:

- Lightweight cardboard or plastic canvas
- Fusible fleece

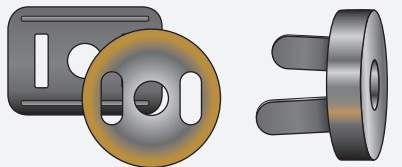
Optional for Apparel:

- Fusible fleece
- Thread to match garment

Snap Parts

NOTE: Metal support may be round or rectangular

SNAP TOP

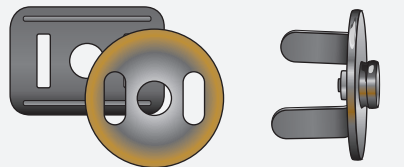


Metal Support

Top Magnetic Snap Section

This thick, magnetic side of the snap goes on the overlapping section of the project.

SNAP BOTTOM



Metal Support

Bottom Non-magnetic Snap Section

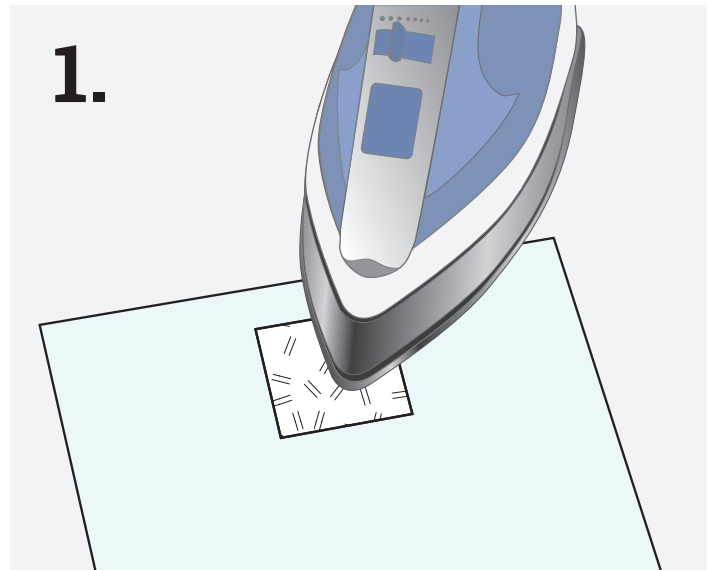
This thin, flat side of the snap goes on the underlapping section of the project.

You've never used a magnetic snap? Well, let us show you the basics. Tips included, of course!

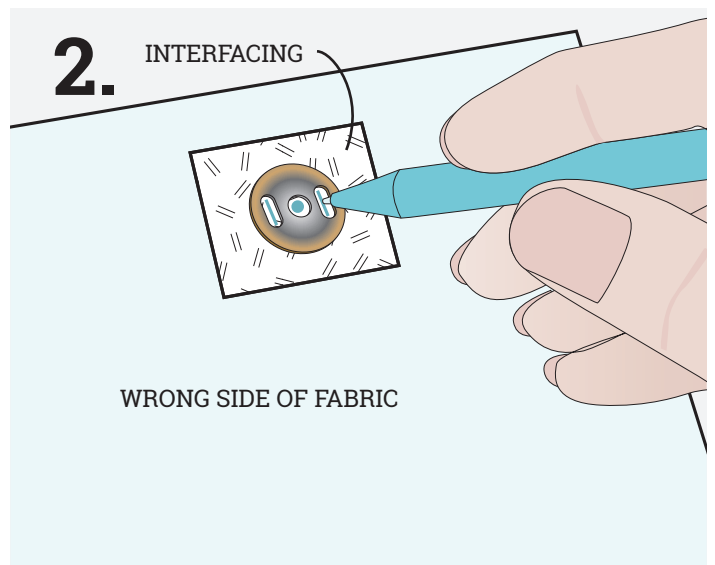


How to Apply a Magnetic Snap with Prongs

1. Always use interfacing under the snap. For apparel, cut a 1 1/2 – 2" square of medium to heavy weight iron-on interfacing. Center it over the intended snap location on the wrong side of the fabric. Press to fuse. For totes and purses cut a 1 1/2 – 2" square of heavy weight iron-on non-woven interfacing. Center it over the intended snap location on the wrong side of the fabric. Press to fuse.



2. Mark the snap position. Use the metal support as your guide. Mark the center of each corresponding snap position, making sure the center points line up. Then mark the small rectangular holes on each side of the center hole. These are for the prongs.



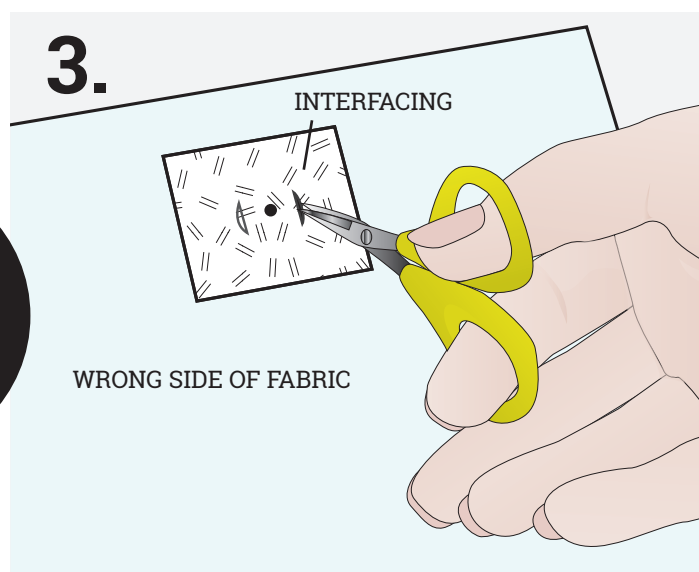
How to Apply a Magnetic Snap with Prongs

3. Use very sharp, small scissors to cut the prong holes. Keep the cut as small as possible.

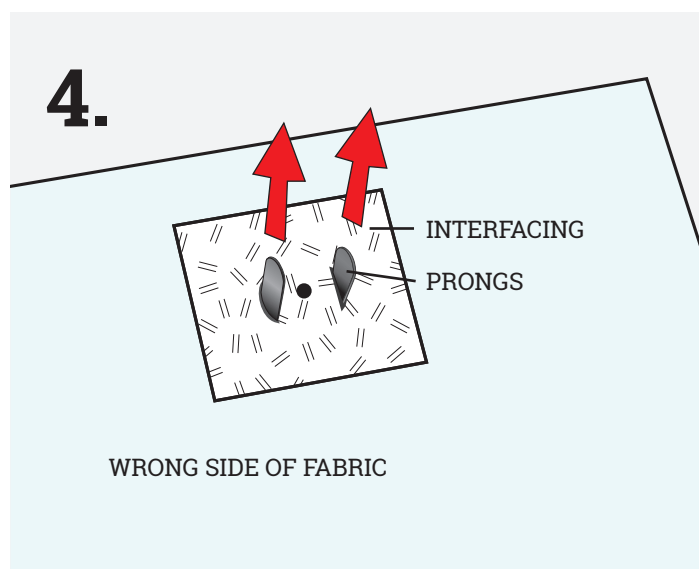
ALTERNATE METHOD

Use a seam ripper to cut the holes for the prongs. Place a straight pin at each end of the mark. Insert the ripper point at one end, and push forward. The straight pins will prevent the cut from going too far.

Use Fray Check®
on the slits to
prevent raveling.



4. Insert the prongs through the slits from the right side to the wrong side of the fabric.

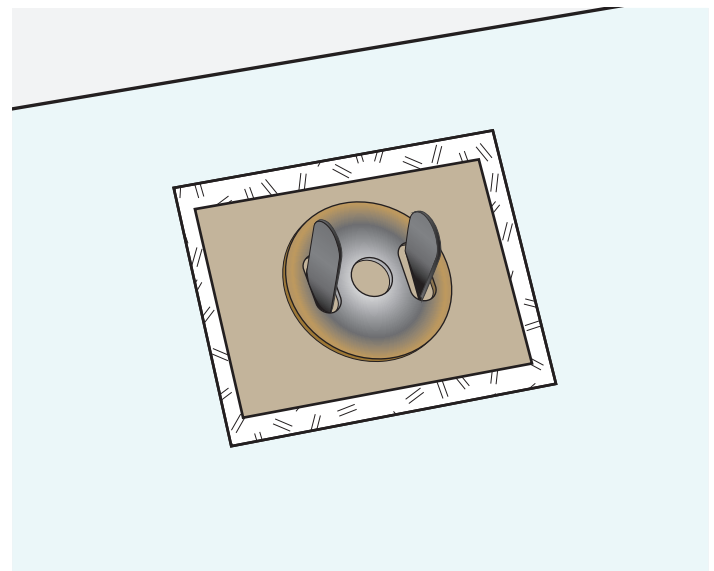
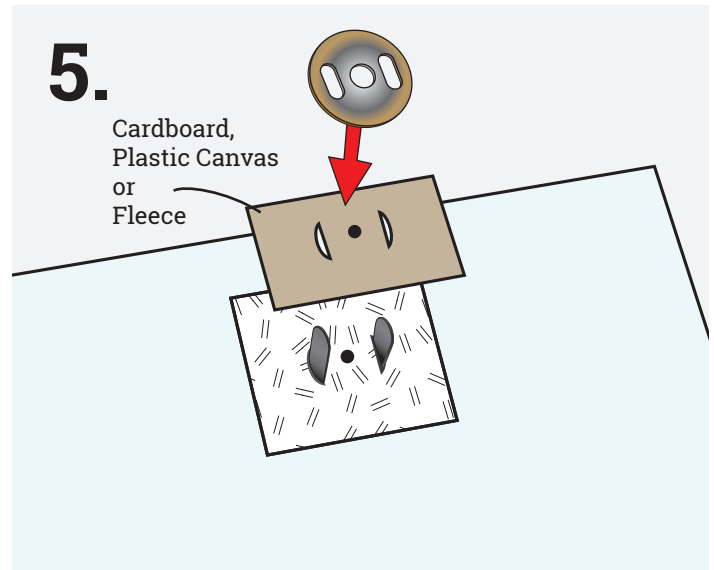


How to Apply a Magnetic Snap with Prongs

5. Place the cardboard and the metal support over the prongs. See the tip for important information!

TIP FOR TOTES & PURSES

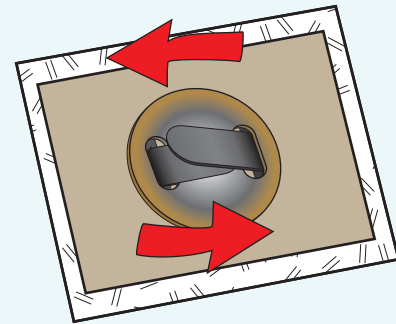
Added support may be needed for totes and purses. Before attaching the metal support add a layer of lightweight cardboard or plastic canvas to add strength and to prevent the metal support or the extended metal prongs from damaging your fabric. Cut the cardboard, plastic canvas or fleece about 1" high x 1 1/2" wide. Mark and cut slits as in steps 2 and 3. Slip this added layer over the prongs, then slide on the metal support. Flatten the prongs as in step 6.



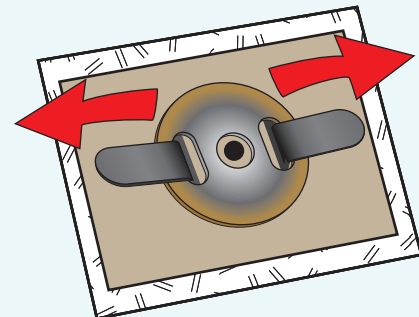
How to Apply a Magnetic Snap with Prongs

6. Use pliers to bend the prongs flat. They can be bent toward the center of the snap, or they can be bent outward away from the snap.

6.



PRONGS
BENT TOWARD
CENTER



PRONGS
BENT OUTWARD



How to Apply a Magnetic Snap with Prongs

7. Always fuse iron-on interfacing to any surface that may rub against the back of the snap. This is on the inside of the project and will not show.

In addition, when not using cardboard or plastic canvas for strength and protection, **(See step 5 Tip)** you can also fuse interfacing or fusible fleece directly to the flattened back of the snap.

