

## 56K USB Dial-up and Fax Modem - V.92 - External

### Product ID

USB56KEMH2



\*Product may vary from image

Component	Function
1 RJ11 Port	<ul style="list-style-type: none"> <li>Connect the <b>USB Dial-up and Fax Modem</b> to a <b>Telephone Jack</b></li> </ul>
2 OH LED (Off-Hook)	<ul style="list-style-type: none"> <li>Indicates the <b>Phone Line</b> is being used</li> <li><b>Green LED Indicator</b> <ul style="list-style-type: none"> <li>Off = Phone Line not being used</li> <li>Steady On = Phone Line is being used</li> </ul> </li> </ul>
3 Data LED	<ul style="list-style-type: none"> <li>Indicates the <b>Phone Line</b> is being used</li> <li><b>Green LED Indicator</b> <ul style="list-style-type: none"> <li>Off = No data is being transmitted</li> <li>Flashing = Data is being transmitted</li> </ul> </li> </ul>
4 USB 2.0 Type-A Port	<ul style="list-style-type: none"> <li>Connect the <b>USB Dial-up and Fax Modem</b> to a <b>USB-A Port</b> on the <b>Host Computer</b></li> </ul>

### Product Information

For the latest manuals, product information, technical specifications, and declarations of conformance, please visit: [www.StarTech.com/USB56KEMH2](http://www.StarTech.com/USB56KEMH2)

### Requirements

- USB enabled computer with an available USB Type-A port

### Package Contents

- USB 56K Modem x 1
- RJ11 cable x 1
- Quick-Start Guide x1

### Installation

#### Download the Driver

1. Navigate to [www.StarTech.com/USB56KEMH2](http://www.StarTech.com/USB56KEMH2)
2. Click the **Drivers & Downloads** tab.
3. Under **Driver(s)**, download the **Driver Package** to the **Host Computer**.

#### Install the Driver

##### Windows

1. **Right-Click** the zipped **Driver Package** that was downloaded. Click **Extract All**. **Browse** to the newly created folder.

**Note:** Ensure to make a note of the location where the drivers were extracted. That location will be used on the next step.

Windows usually saves the files to the Downloads folder associated with the user account (e.g. C:\Users\useraccount\Downloads).

2. Open the folder corresponding to the **Windows** version installed on the **Host Computer**.

3. Right-click the **Installer Setup** file. Click **Run as administrator**.

**Note:** If the Run as administrator option is not available, it could indicate an attempt to run the Installer Setup from within the zipped Driver Package. Extract the files using the instructions in Step 1 in the Install the Driver section.

4. Follow the **On-Screen Instructions** to install the **Device Driver**. Restart the **Host Computer** if prompted.

##### macOS

**Note:** No driver is required because this product is natively supported in macOS for Fax (up to 10.6.x) and Dial-up (up to 12.x.x).

## Confirm the Device Installation

### Windows

1. On the keyboard press the **Windows + R** keys. In the new **Pop-up Window** type **devmgmt.msc**. Press **Enter** to open the **Device Manager** screen.
2. Expand the **Modems** category, right-click **USB Data Fax Voice Modem** and click the **Properties** option. (Figure 1)
3. Click the **Driver** tab to confirm that the **Driver** is installed correctly. (Figure 2)

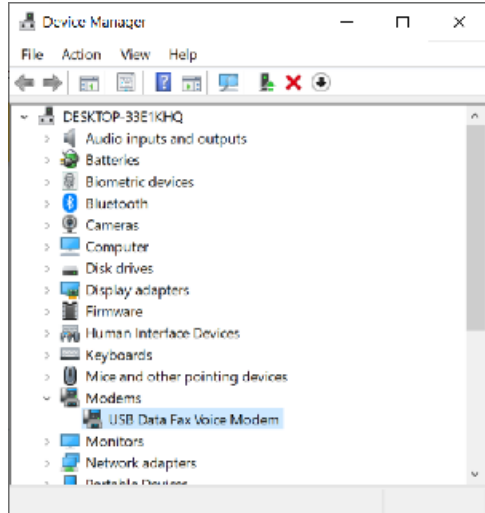


Figure 1

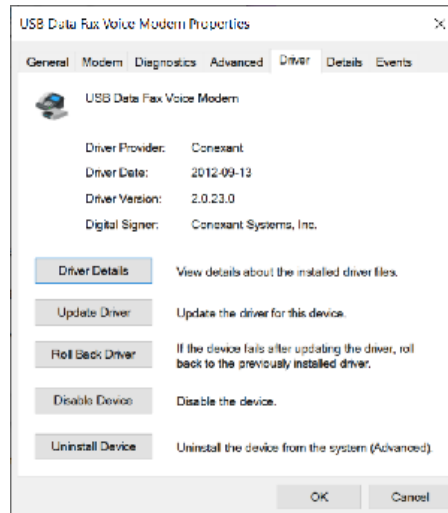


Figure 2

### macOS

1. Open **System Report**.
2. On the **Left Pane** expand on **Hardware** and select **USB**.
3. On the **Right Pane** look for **USB Modem**, click on it for additional details. (Figure 3)

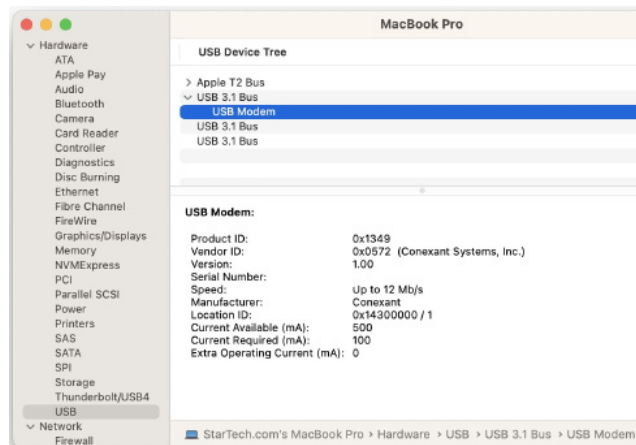


Figure 3

## Configuration

### Windows

#### Setup Dialing Rules

1. On the keyboard press the **Windows + R** keys. In the new **Pop-up Window** type **telephon.cpl**. Press **Enter** to open the **Local Information Manager** window.
2. In the **Location Information** window, enter the **Country** and **Area Code** details. Click on **Tone** or **Pulse dialing**. Click **OK**. (Figure 4)

**Note:** *Tone dialing is the most common dialing method.*

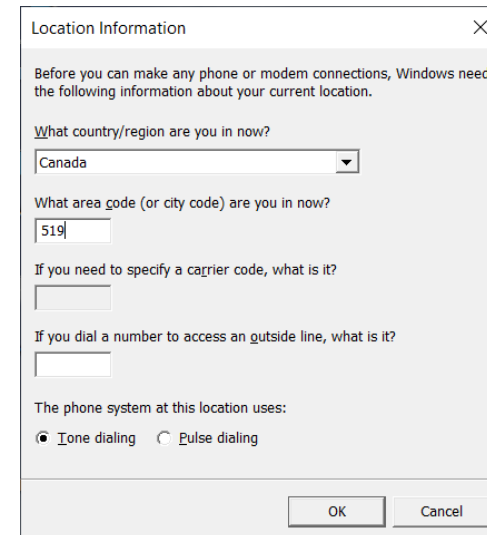


Figure 4

3. The new **Location** will be selected by default in the **Phone and Modem** window. Click on **OK** to close the window. (Figure 5)

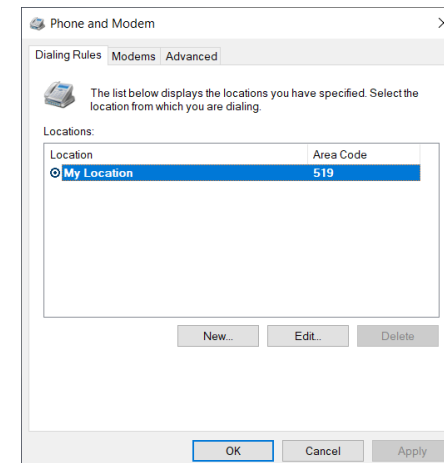


Figure 5

# Setup a Dial-up Connection

## Windows

1. Open the **Network and Sharing Center**. Click on **Set up a new connection or network**.
2. In the **Set up a Connection or Network** window click on **Connect to the Internet**. (Figure 6)

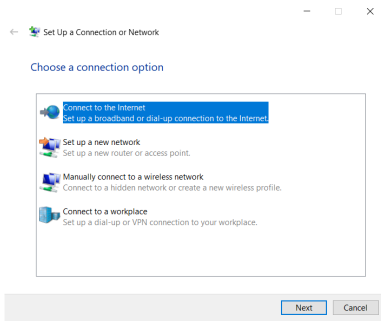


Figure 6

3. In the **Connect to the Internet** window, select **Dial-up**. (Figure 7)

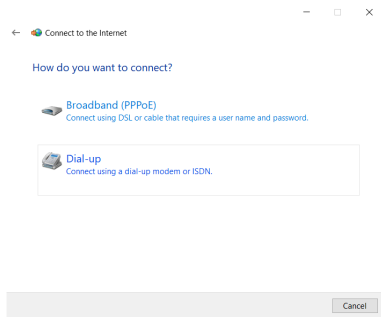


Figure 7

4. Enter all the information provided by the **ISP** (Internet Service Provider). Type a new **Connection name** or use the default one. Once all the required information has been entered, click on **Connect** (Figure 8)

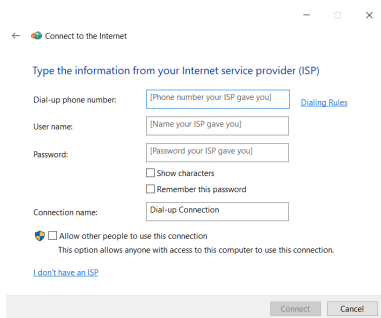


Figure 8

5. The connection will be dialed. Once a link is established a confirmation

message will be displayed. (Figure 9)



Figure 9

## macOS

**Note:** Dial-up is no longer supported with macOS Ventura or later.

1. Open **System Preferences**. Open **Network**.
2. On the **Left Pane** select **USB Modem**.
3. On the **Right Pane**, enter all the information provided by the **ISP** (Internet Service Provider). Once all the required information has been entered, click on **Apply**, then click **Connect**. (Figure 10)

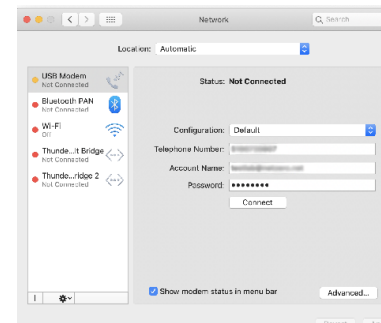


Figure 10

4. The connection will be dialed. Once a link is established the **Status** will change to **Connected** along with additional information. (Figure 11)

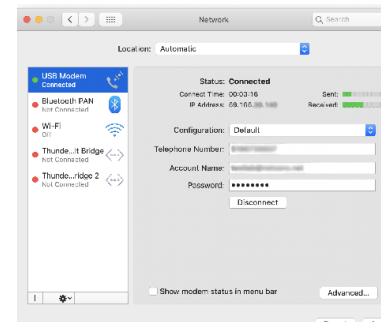


Figure 11

## Setup a Fax Connection

### Windows

**Note:** Windows Fax and Scan may not be included with a new Windows 11 computer or installation. To enable, go to Settings, select System from the Left Pane. Click on Optional Features, click View Features, search for Windows Fax and Scan and select it, click Next to install the required application.

1. Open **Windows Fax and Scan**, then click on **Tools** and select **Fax Accounts**.
2. In the **Fax Account** window, click on **Add...** (Figure 12)

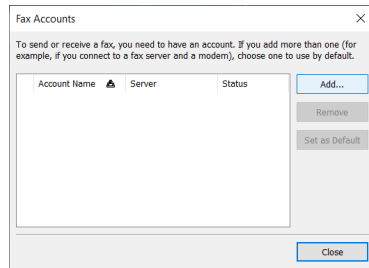


Figure 12

3. In the **Fax Setup** window click on **Connect to a fax modem**.
4. Enter a modem **Name** or leave the default one. Click on **Next**. (Figure 13)

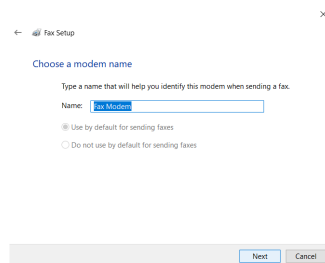


Figure 13

5. Click to select **Answer Automatically (recommended)**. On the **Fax Accounts** window, click on **Close** to return to the main **Windows Fax and Scan** window. (Figure 14)

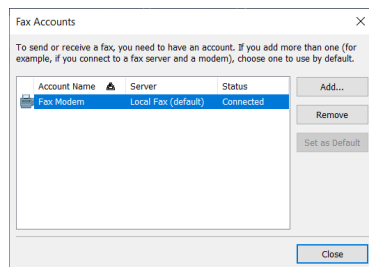


Figure 14

6. In the **Windows Fax and Scan** window, click on **New Fax**.
7. Enter a **Fax Number to Dial** in the **To** field. Enter details in the **Subject** and **Note**

field as needed. Click on **Send**. (Figure 15)

**Note:** The number formatting in North America is area code followed by a 7-digit number (e.g. 519-XXX-XXXX). The format can change depending on the country or dialing rules, such as having to dial 9 prior to dialing out. Contact the fax/phone line provider or administrator for further information.

If a Fax Number or a Fax Machine is unavailable, use a different number (e.g., cellphone number) to confirm if it rings when the fax is sent. This test ensures USB56KEMH2 is working as expected.

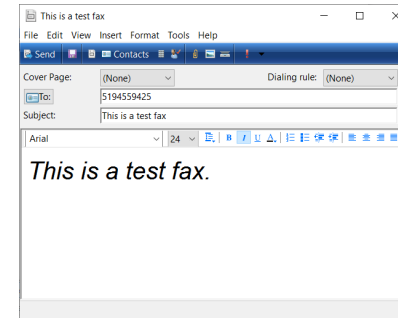


Figure 15

8. The **Fax** will now attempt to send. (Figure 16)

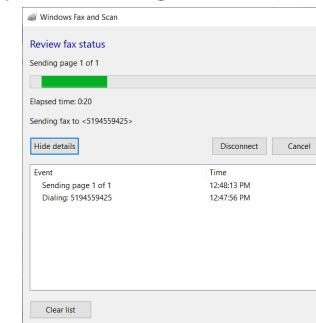


Figure 16

9. The **Review fax status** window displays useful information if the fax was sent successfully. (Figure 17)

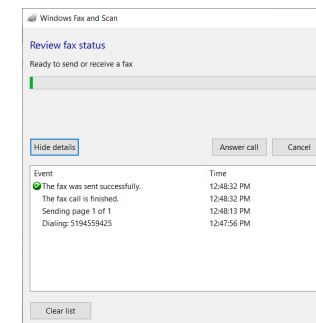


Figure 17

## macOS

**Note:** USB Fax is no longer supported with OS X Lion or later.

1. Open the document to be faxed .
2. Click on the **File Menu** and select **Print**.
3. Select **USB Modem** from the **Printer** list. (Figure 18)
4. Configure the paper size, orientation, and other settings as needed. (Figure 18)
5. Enter a **Fax Number to Dial** in the **To:** field. Enter details in the **Subject** and **Message** field as needed. Click on **Fax**. (Figure 18)

**Note:** The number formatting in North America is area code followed by a 7-digit number (e.g. 519-XXX-XXXX). The format can change depending on the country or dialing rules, such as having to dial 9 prior to dialing out. Contact the fax/phone line provider or administrator for further information.

If a Fax Number or a Fax Machine is unavailable, use a different number (e.g., cellphone number) to confirm if it rings when the fax is sent. This test ensures USB56KEMH2 is working as expected.

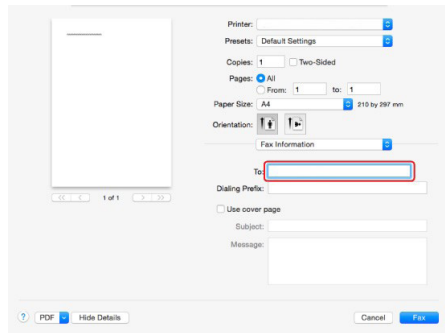


Figure 18

6. The **Fax** will now attempt to send.

## Regulatory Compliance



### FCC Compliance Statement

This equipment has been tested and found to comply with the limits for a Class B digital device, pursuant to Part 15 of the FCC Rules. These limits are designed to provide reasonable protection against harmful interference in a residential installation. This equipment generates, uses, and can radiate radio frequency energy and, if not installed and used in accordance with the instructions, may cause harmful interference to radio communications. However, there is no guarantee that interference will not occur in a particular installation. If this equipment does cause harmful interference to radio or television reception, which can be determined by turning the equipment off and on, the user is encouraged to try to correct the interference by one or more of the following measures:

- Reorient or relocate the receiving antenna.
- Increase the separation between the equipment and receiver.
- Connect the equipment to an outlet on a different circuit than the receiver.
- Consult the dealer or an experienced radio/TV technician for help.

Any changes or modifications not expressly approved by the party responsible for compliance could void the user's authority to operate the device. If shielded interface cables are included with the product, or if additional components or accessories are designated for use with the installation, they must be used to ensure compliance with FCC regulations.

### FCC Part 68 Statement

This equipment complies with Part 68 of the FCC rules and the requirements adopted by the ACTA. On the bottom of this equipment is a label that contains, among other information, a product identifier in the format: US:AAAEQ##TXXXX. If requested, this number must be provided to the telephone company.

A plug and jack used to connect this equipment to the premises wiring and telephone network must comply with the applicable FCC Part 68 rules and requirements adopted by the ACTA. A compliant telephone cord and modular plug is provided with this product. It is designed to be connected to a compatible modular jack that is also compliant. See installation instructions for details.

The REN is used to determine the number of devices that may be connected to a telephone line. Excessive RENs on a telephone line may result in the devices not ringing in response to an incoming call. In most but not all areas, the sum of RENs should not exceed five (5.0). To be certain of the number of devices that may be connected to a line, as determined by the total RENs, contact the local telephone company. The REN for this product is part of the product identifier that has the format US:AAAEQ##TXXXX. The digits represented by ## are the REN without a decimal point. For this product the FCC Registration number is [US: STAMM01A56KEMH2] indicates the REN would be 0.1.

If this equipment [US: STAMM01A56KEMH2] causes harm to the telephone network, the telephone company will notify you in advance that temporary discontinuance of service may be required. But if advance notice isn't practical, the telephone company will notify the customer as soon as possible. Also, you will be advised of your right to file a complaint with the FCC if you believe it is necessary.

The telephone company may make changes in its facilities, equipment, operations or procedures that could affect the operation of the equipment. If this happens the telephone company will provide advance notice in order for you to make necessary modifications to maintain uninterrupted service.

If trouble is experienced with this equipment [US: STAMM01A56KEMH2], for repair or warranty information, Service can be facilitated through our office at (see bottom for US address) or visit [www.startech.com](http://www.startech.com) for more information. For repair procedures, follow the instructions outlined under the limited warranty; otherwise do not alternate or repair any parts of device except specified.

If the equipment is causing harm to the telephone network, the telephone company may request that you disconnect the equipment until the problem is resolved.

Connection to party line service is subject to state tariffs. Contact the state public utility commission, public service commission or corporation commission for information.

If your home has specially wired alarm equipment connected to the telephone line, ensure the installation of this USB56KEMH2 does not disable your alarm equipment. If you have questions about what will disable alarm equipment, consult your telephone company or a qualified installer.

If this product is equipped with a corded or cordless handset, it is hearing aid compatible.

If the telephone company requests information on what equipment is connected to their lines, inform them of:

- a) The ringer equivalence number [0.1]
- b) The USOC jack required [RJ11C]
- c) The FCC Registration Number [US: STAMM01A56KEMH2].

### ISED Statement / Déclaration d'ISDE

CAN ICES-003(B) / NMB-003(B)

This Class B digital apparatus complies with Canadian ICES-003.

This device complies with ISED Canada licence-exempt RSS standard(s). Operation is subject to the following two conditions: (1) this device may not cause interference, and (2) this device must accept any interference, including interference that may cause undesired operation of the device.

Cet appareil numérique de la classe B est conforme à la norme NMB-003 du Canada.

Le présent appareil est conforme aux CNR d'ISDE Canada applicables aux appareils radio exempts de licence. L'exploitation est autorisée aux deux conditions suivantes : (1) l'appareil ne doit pas produire de brouillage, et (2) l'appareil doit accepter tout brouillage radioélectrique subi, même si le brouillage est susceptible d'en compromettre le fonctionnement.

### ISED CS-03 Statement / Déclaration CS-03 d'ISDE

This product meets the applicable Innovation, Science and Economic Development Canada technical specifications.

The Ringer Equivalence Number (REN) indicates the maximum number of devices allowed to be connected to a telephone interface. The termination of an interface may consist of any combination of devices subject only to the requirement that the sum of the RENs of all the devices not exceed five.

Le présent produit est conforme aux spécifications techniques applicables d'Innovation, Sciences et Développement économique Canada.

L'indice d'équivalence de la sonnerie (IES) sert à indiquer le nombre maximal de dispositifs qui peuvent être raccordés à une interface téléphonique. La terminaison d'une interface peut consister en une combinaison quelconque de dispositifs, à la seule condition que la somme des IES de tous les dispositifs n'excède pas cinq.

### Use of Trademarks, Registered Trademarks, and other Protected Names and Symbols

This manual may make reference to trademarks, registered trademarks, and other protected names and/or symbols of third-party companies not related in any way to StarTech.com. Where they occur these references are for illustrative purposes only and do not represent an endorsement of a product or service by StarTech.com, or an endorsement of the product(s) to which this manual applies by the third-party company in question. Regardless of any direct acknowledgment elsewhere in the body of this document, StarTech.com hereby acknowledges that all trademarks, registered trademarks, service marks, and other protected names and/or symbols contained in this manual and related documents are the property of their respective holders.

### Warranty Information

This product is backed by a 2 years warranty.

For further information on product warranty terms and conditions, please refer to [www.startech.com/warranty](http://www.startech.com/warranty).

### Limitation of Liability

In no event shall the liability of StarTech.com Ltd. and StarTech.com USA LLP (or their officers, directors, employees or agents) for any damages (whether direct or indirect, special, punitive, incidental, consequential, or otherwise), loss of profits, loss of business, or any pecuniary loss, arising out of or related to the use of the product exceed the actual price paid for the product. Some States do not allow the exclusion or limitation of incidental or consequential damages. If such laws apply, the limitations or exclusions contained in this statement may not apply to you.



Points de collecte sur [www.quefairemesdechets.fr](http://www.quefairemesdechets.fr)  
Privilégiez la réparation ou le don de votre appareil !

#### StarTech.com Ltd.

45 Artisans Crescent  
London, Ontario  
N5V 5E9  
Canada

#### StarTech.com LLP

4490 South Hamilton  
Road  
Groveport, Ohio  
43125  
U.S.A.

#### StarTech.com Ltd.

Unit B, Pinnacle 15  
Gowerton Road  
Brackmills,  
Northampton  
NN4 7BW  
United Kingdom

#### StarTech.com Ltd.

Siriusdreef 17-27  
2132 WT Hoofddorp  
The Netherlands

FR: [startech.com/fr](http://startech.com/fr)  
DE: [startech.com/de](http://startech.com/de)  
ES: [startech.com/es](http://startech.com/es)  
NL: [startech.com/nl](http://startech.com/nl)  
IT: [startech.com/it](http://startech.com/it)  
JP: [startech.com/jp](http://startech.com/jp)