

SECTION A-A
SCALE 1 : 1.5

STATIC TORQUE RECOMMENDATION: 40-70 in-lbs
REQUIREMENT MAY VARY DEPENDING UPON CONTAINER MATERIAL,
NECK FINISH, AND CAPPING EQUIPMENT

REFERENCE	DIMENSION	TOLERANCE	UNITS
E	3.439 [87.35]	±0.018 [0.46]	in [mm]
T	3.550 [90.17]	±0.018 [0.46]	in [mm]
H	0.524 [13.31]	±0.010 [0.25]	in [mm]
OD	3.680 [93.47]	±0.025 [0.64]	in [mm]
OAH	0.839 [21.31]	±0.015 [0.38]	in [mm]
PART WEIGHT	24.5	± 0.5	g
OPENING FORCE	4.5	± 2.5	lbf
THREAD DETAIL INFORMATION:	5 THREADS PER INCH	0.200" [50.8] PITCH	450° FULL DEPTH THREADS

DISCLAIMER

This specification does not relieve the customer of their ultimate responsibility for the determination of the appropriate container. It is the customer's responsibility to select the appropriate packaging based upon all information at their disposal including the specific application, regulatory compliance, product compatibility and shipping requirements. WE HEREBY DISCLAIM AND EXCLUDE ANY EXPRESS OR IMPLIED WARRANTIES, INCLUDING WITHOUT LIMITATION THE IMPLIED WARRANTIES OF MERCHANTABILITY AND FITNESS FOR A PARTICULAR PURPOSE.

DISTRIBUTED BY:



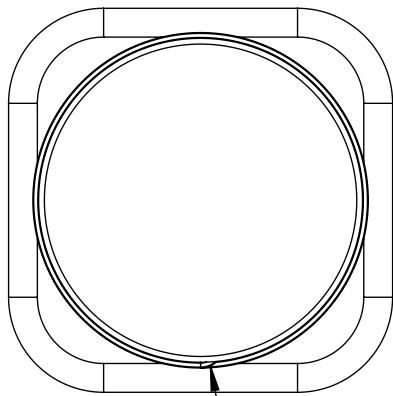
REF NO.:

DWG32008

DESCRIPTION:

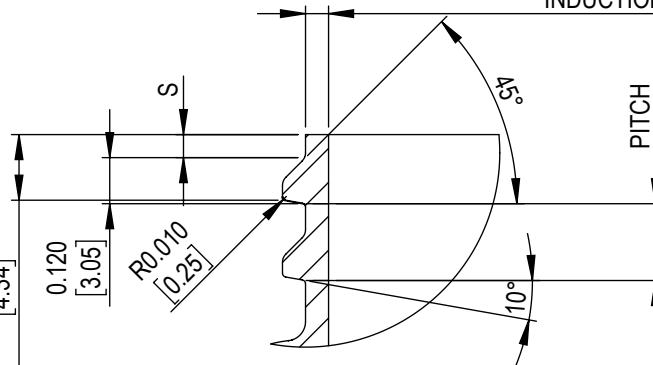
89-400 PP Flapper Cap, Pour Flap

0.050 [0.127] MINIMUM FLAT
RECOMMENDED FOR
INDUCTION SEALING

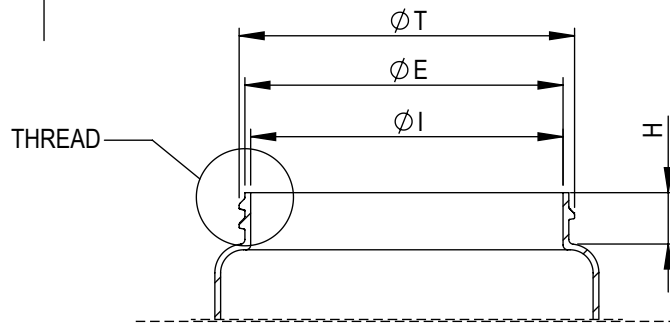
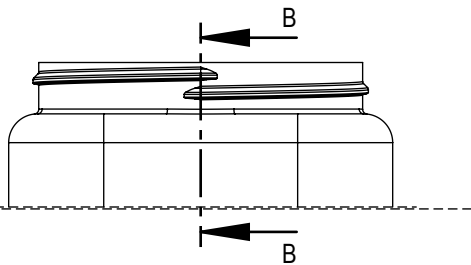


START THREAD

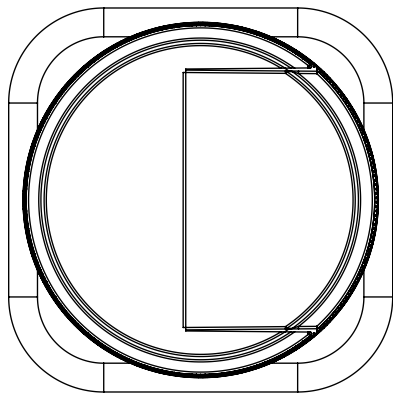
CRITICAL FOR ORIENTATION
0.001"= 2° IN ROTATION
S' 0.171
[4.34]



DETAIL THREAD
SCALE 2 : 1



SECTION B-B



REFERENCE	TOLERANCE	UNITS	DIMENSION
E	±0.017 [.43]	in [mm]	3.374 [85.70]
T	±0.017 [.43]	in [mm]	3.494 [88.75]
I	MINIMUM	in [mm]	2.821 [71.65]
S	±0.015 [0.38]	in [mm]	0.060 [1.52]
H	MINIMUM	in [mm]	0.535 [13.59]
PITCH		in [mm]	0.200 [5.08]
TPI			5

DISCLAIMER

This specification does not relieve the customer of their ultimate responsibility for the determination of the appropriate container. It is the customer's responsibility to select the appropriate packaging based upon all information at their disposal including the specific application, regulatory compliance, product compatibility and shipping requirements. WE HEREBY DISCLAIM AND EXCLUDE ANY EXPRESS OR IMPLIED WARRANTIES, INCLUDING WITHOUT LIMITATION THE IMPLIED WARRANTIES OF MERCHANTABILITY AND FITNESS FOR A PARTICULAR PURPOSE.

DISTRIBUTED BY:



REF NO.:

DWG32008

DESCRIPTION:

89-400 PP Flapper Cap, Pour Flap