

Steel Square Boxes

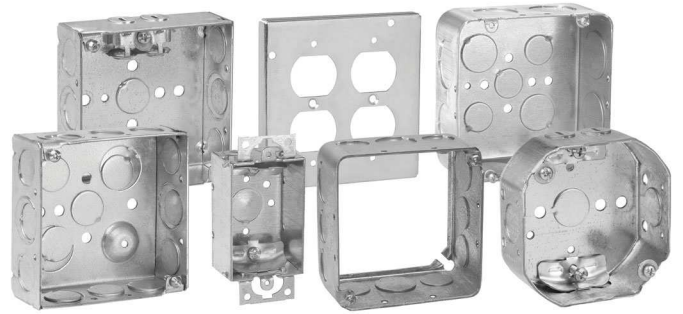
4" SQUARE OUTLET BOXES & COVERS

Applications:

- For use with conduit
- Available in red for fire alarm applications

Features:

- Ideal for exposed work applications, providing an easy method for the installation of electrical devices (switches, receptacles, fans, lights, etc.)
- Raised ground screw location in the welded boxes saves time in installation
- Available with pre-installed ground screws and pigtails for increased labor savings
- Knockouts are suitable for use without a bonding jumper in circuits above or below 250 volts
- Available in two depths for differing cubic capacity requirements
- Welded or drawn construction to match customer preference
- Extensive cover offering to meet various customer applications and needs



Certifications and Compliances:

- UL Listed

4" SQUARE OUTLET BOXES – 18.0 CUBIC INCH CAPACITY

1¼" DEEP – FOR CONDUIT

UL LISTED



TP408

Knockouts

| Cat. # | Bracket | Description | Knockouts | | Unit Qty. | Wt. Lbs. Per 100 |
|--------|---------|-------------|-----------|--------|-----------|------------------|
| | | | Sides | Bottom | | |
| TP408 | - | Drawn | 12 – ½" | 5 – ½" | 50 | 61 |

Steel Boxes

Steel Square Boxes

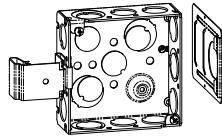
4" SQUARE OUTLET BOXES – 22.0 CUBIC INCH CAPACITY (WELDED)† 21.0 CUBIC INCH CAPACITY (DRAWN)

1½" DEEP – FOR CONDUIT

UL LISTED



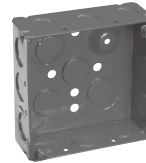
TP404/TP404PF



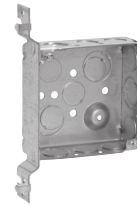
TP404SSB



TP404MSB



TP404RED



TP425



TP469



TP830*



TP405



TP412
TP839*



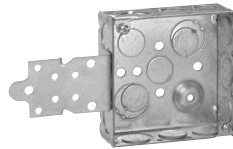
TP410



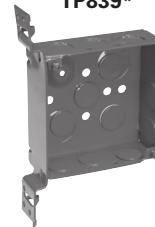
TP414RED



TP414



TP418



TP423RED

Knockouts

| Cat. # | Metal Stud Sizes | Bracket | Description | Knockouts | | Unit Qty. | Wt. Lbs. Per 100 |
|-------------------|------------------|----------------|-------------|-----------------------|-----------------------|-----------|------------------|
| | | | | Sides | Bottom | | |
| TP404** | - | - | Welded | 8 - ½", 4 - ½" + ¾" E | 2 - ½", 2 - ½" + ¾" E | 50 | 72 |
| TP404MSB | - | MSB | Welded | 8 - ½", 4 - ½" + ¾" E | 2 - ½", 2 - ½" + ¾" E | 25 | 83 |
| TP404RED | - | - | Welded | 8 - ½", 4 - ½" + ¾" E | 2 - ½", 2 - ½" + ¾" E | 50 | 72 |
| TP404REDMSB | - | MSB | Welded | 8 - ½", 4 - ½" + ¾" E | 2 - ½", 2 - ½" + ¾" E | 25 | 83 |
| TP404PF†** | - | - | Welded | 8 - ½", 4 - ½" + ¾" E | 2 - ½", 2 - ½" + ¾" E | 50 | 72 |
| TP404SSB | - | SSB | Welded | 8 - ½", 4 - ½" + ¾" E | 2 - ½", 2 - ½" + ¾" E | 50 | 83 |
| TP425** | All | "VP" | Welded | 6 - ½", 3 - ½" + ¾" E | 2 - ½", 2 - ½" + ¾" E | 25 | 82 |
| TP423** | All | "VMS" | Welded | 6 - ½", 3 - ½" + ¾" E | 2 - ½", 2 - ½" + ¾" E | 25 | 81 |
| TP423RED | All | "VMS" | Welded | 6 - ½", 3 - ½" + ¾" E | 2 - ½", 2 - ½" + ¾" E | 25 | 81 |
| TP405 | - | - | Drawn | 4 - ½", 6 - ½" + ¾" C | 3 - ½", 2 - ¾" | 50 | 67 |
| TP410 | - | - | Drawn | 12 - ½" | 5 - ½" | 50 | 67 |
| TP412 | - | - | Drawn | 8 - ¾" | 3 - ½", 2 - ¾" | 50 | 67 |
| TP414 | - | - | Drawn | 8 - ½", 4 - ¾" | 3 - ½", 2 - ¾" | 50 | 67 |
| TP414RED | - | - | Drawn | 8 - ½", 4 - ¾" | 3 - ½", 2 - ¾" | 50 | 67 |
| TP418 | - | "F", Set Flush | Welded | 6 - ½", 3 - ½" + ¾" E | 2 - ½", 2 - ½" + ¾" E | 25 | 84 |
| TP467 | - | - | Welded | 8 - ¾" | 2 - ½", 2 - ½" + ¾" E | 50 | 72 |
| TP467MSB | - | MSB | Welded | 8 - ¾" | 2 - ½", 2 - ½" + ¾" E | 25 | 78 |
| TP469 | All | "VMS" | Welded | 6 - ¾" | 2 - ½", 2 - ½" + ¾" E | 25 | 81 |
| Air Plenum | | | | | | | |
| TP830* | - | - | Drawn | 8 - ½", 4 - ¾" | 3 - ½", 2 - ¾" | 50 | 72 |
| TP839* | - | - | Drawn | 8 - ¾" C | 3 - ½", 2 - ¾" | 50 | 72 |

*For Air Plenum (no mounting holes) - not UL Listed.

**cUL Listed.

†All welded 4" Square Outlet Boxes have a raised dimple for ground screw.

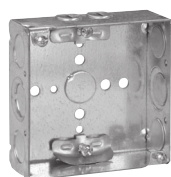
‡TP404PF includes ground screw with pigtail lead.

Steel Boxes

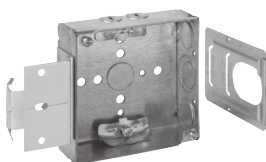
Steel Square Boxes

4" SQUARE OUTLET BOXES – 22.0 CUBIC INCH CAPACITY

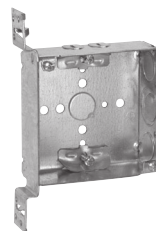
1½" DEEP
FOR NON-METALLIC CABLE – CLAMPS IN EACH END
UL LISTED



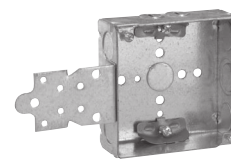
TP444



TP444MSB



TP449

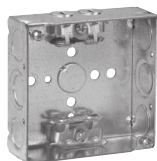


TP446

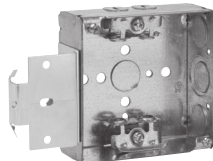
| Cat. # | Bracket | Description | Knockouts | | Unit Qty. | Wt. Lbs. Per 100 |
|----------|----------------|-------------|----------------------------------|--------|-----------|------------------|
| | | | Sides | Bottom | | |
| TP444 | - | Welded | 4 - Cable, 4 - ½", 2 - ½" + ¾" E | 1 - ½" | 50 | 77 |
| TP444MSB | MSB | Welded | 4 - Cable, 4 - ½", 2 - ½" + ¾" E | 1 - ½" | 25 | 81 |
| TP444SSB | SSB | Welded | 4 - Cable, 4 - ½", 2 - ½" + ¾" E | 1 - ½" | 50 | 88 |
| TP446 | "F", Set Flush | Welded | 4 - Cable, 2 - ½", 1 - ½" + ¾" E | 1 - ½" | 25 | 88 |
| TP449 | "VMS" | Welded | 4 - Cable, 2 - ½", 1 - ½" + ¾" E | 1 - ½" | 25 | 85 |

4" SQUARE OUTLET BOXES – 22.0 CUBIC INCH CAPACITY

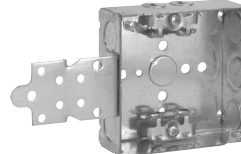
1½" DEEP
FOR ARMoured & METAL-CLAD (MCI) CABLE & HCF CABLE – CLAMPS IN EACH END
UL LISTED



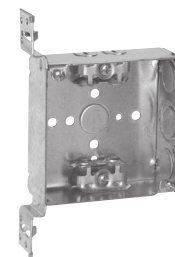
TP454



TP454MSB



TP456



TP459

Steel Boxes

| Cat. # | Bracket | Description | Knockouts | | Unit Qty. | Wt. Lbs. Per 100 |
|-----------|----------------|-------------|----------------------------------|--------|-----------|------------------|
| | | | Sides | Bottom | | |
| TP459 | "VMS" | Welded | 4 - Cable, 2 - ½", 1 - ½" + ¾" E | 1 - ½" | 25 | 89 |
| TP454* | - | Welded | 4 - Cable, 4 - ½", 2 - ½" + ¾" E | 1 - ½" | 50 | 81 |
| TP454MSB | MSB | Welded | 4 - Cable, 4 - ½", 2 - ½" + ¾" E | 1 - ½" | 25 | 91 |
| TP454PF† | - | Welded | 4 - Cable, 4 - ½", 2 - ½" + ¾" E | 1 - ½" | 50 | 81 |
| TP454SSB* | SSB | Welded | 4 - Cable, 4 - ½", 2 - ½" + ¾" E | 1 - ½" | 25 | 82 |
| TP456* | "F", Set Flush | Welded | 4 - Cable, 2 - ½", 1 - ½" + ¾" E | 1 - ½" | 25 | 92 |
| TP456PF† | "F", Set Flush | Welded | 4 - Cable, 2 - ½", 1 - ½" + ¾" E | 1 - ½" | 25 | 92 |

*UL approved for use with aluminum interlocking grounding metal-clad cable, Type MCIA (Southwire MCAP™).

MCAP™ is a registered trademark of Southwire Company.

†TP catalog numbers ending in PF include ground screw with pigtail lead.

Steel Square Boxes

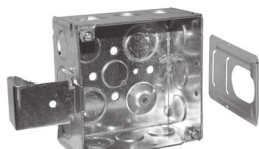
4" SQUARE OUTLET BOXES – 30.3 CUBIC INCH CAPACITY

2 1/8" DEEP – FOR CONDUIT

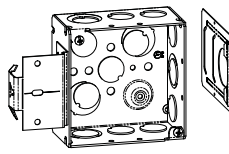
UL LISTED



TP403/TP403PF



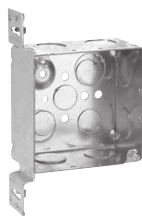
TP403SSB



TP403MSB



TP432



TP432VMS



TP434



TP438
TP831*



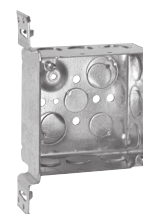
TP403RED



TP434RED



TP451RED



TP451

Steel Boxes

| Cat. # | Bracket | Description | Knockouts | | Unit Qty. | Wt. Lbs. Per 100 |
|-------------------|---------|-------------|-----------------------------|-----------------------------|-----------|------------------|
| | | | Sides | Bottom | | |
| TP403** | - | Welded | 8 - 1/2", 4 - 1/2" + 3/4" E | 2 - 1/2", 2 - 1/2" + 3/4" E | 25 | 84 |
| TP403MSB | MSB | Welded | 8 - 1/2", 4 - 1/2" + 3/4" E | 2 - 1/2", 2 - 1/2" + 3/4" E | 25 | 95 |
| TP403RED | - | Welded | 8 - 1/2", 4 - 1/2" + 3/4" E | 2 - 1/2", 2 - 1/2" + 3/4" E | 25 | 84 |
| TP403REDMSB | MSB | Welded | 8 - 1/2", 4 - 1/2" + 3/4" E | 2 - 1/2", 2 - 1/2" + 3/4" E | 25 | 95 |
| TP403PF†** | - | Welded | 8 - 1/2", 4 - 1/2" + 3/4" E | 2 - 1/2", 2 - 1/2" + 3/4" E | 25 | 84 |
| TP403SSB | SSB | Welded | 8 - 1/2", 4 - 1/2" + 3/4" E | 2 - 1/2", 2 - 1/2" + 3/4" E | 25 | 95 |
| TP432** | - | Welded | 8 - 3/4" | 2 - 1/2", 2 - 1/2" + 3/4" E | 25 | 84 |
| TP432MSB | MSB | Welded | 8 - 3/4" | 2 - 1/2", 2 - 1/2" + 3/4" E | 25 | 95 |
| TP432REDMSB | MSB | Welded | 8 - 3/4" | 2 - 1/2", 2 - 1/2" + 3/4" E | 25 | 95 |
| TP432VMS | "VMS" | Welded | 6 - 3/4" | 2 - 1/2", 2 - 1/2" + 3/4" E | 25 | 99 |
| TP436 | - | Welded | 8 - 1" | 2 - 1/2", 2 - 1/2" + 3/4" E | 25 | 84 |
| TP436MSB | MSB | Welded | 8 - 1" | 2 - 1/2", 2 - 1/2" + 3/4" E | 25 | 95 |
| TP434 | - | Drawn | 8 - 1/2", 4 - 3/4" | 3 - 1/2", 2 - 3/4" | 25 | 84 |
| TP434RED | - | Drawn | 8 - 1/2", 4 - 3/4" | 3 - 1/2", 2 - 3/4" | 25 | 84 |
| TP438 | - | Drawn | 4 - 1/2", 6 - 1/2" + 3/4" C | 3 - 1/2", 2 - 3/4" | 25 | 84 |
| TP438PF† | - | Drawn | 4 - 1/2", 6 - 1/2" + 3/4" C | 3 - 1/2", 2 - 3/4" | 25 | 84 |
| TP451 | "VMS" | Welded | 6 - 1/2", 3 - 1/2" + 3/4" E | 2 - 1/2", 2 - 1/2" + 3/4" E | 25 | 96 |
| TP451PF† | "VMS" | Welded | 6 - 1/2", 3 - 1/2" + 3/4" E | 2 - 1/2", 2 - 1/2" + 3/4" E | 25 | 96 |
| TP451RED | "VMS" | Welded | 6 - 1/2", 3 - 1/2" + 3/4" E | 2 - 1/2", 2 - 1/2" + 3/4" E | 25 | 96 |
| TP437 | "VP" | Welded | 6 - 1/2", 3 - 1/2" + 3/4" E | 2 - 1/2", 2 - 1/2" + 3/4" E | 25 | 98 |
| Air Plenum | | | | | | |
| TP831* | - | Drawn | 8 - 1/2", 4 - 3/4" | 3 - 1/2", 2 - 3/4" | 25 | 90 |

*For Air Plenum (no mounting holes) - not UL Listed.

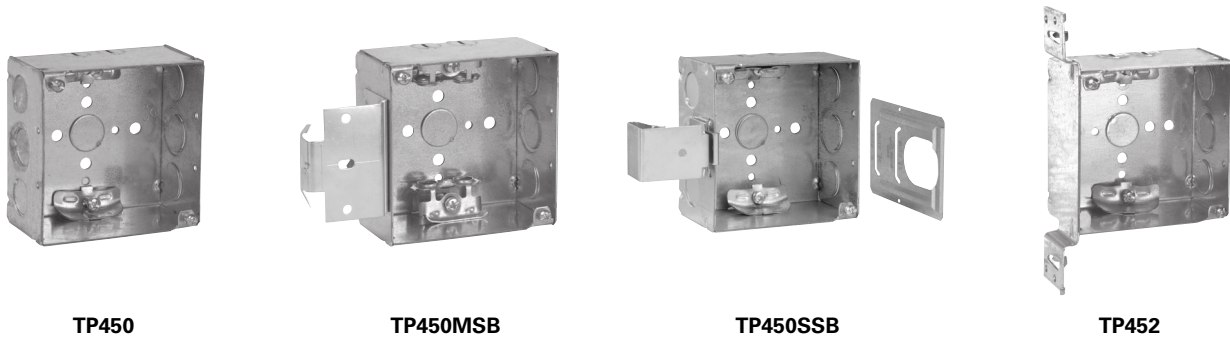
**cUL Listed.

†TP catalog numbers ending in PF include ground screw with pigtail lead.

Steel Square Boxes

4" SQUARE OUTLET BOXES – 30.3 CUBIC INCH CAPACITY

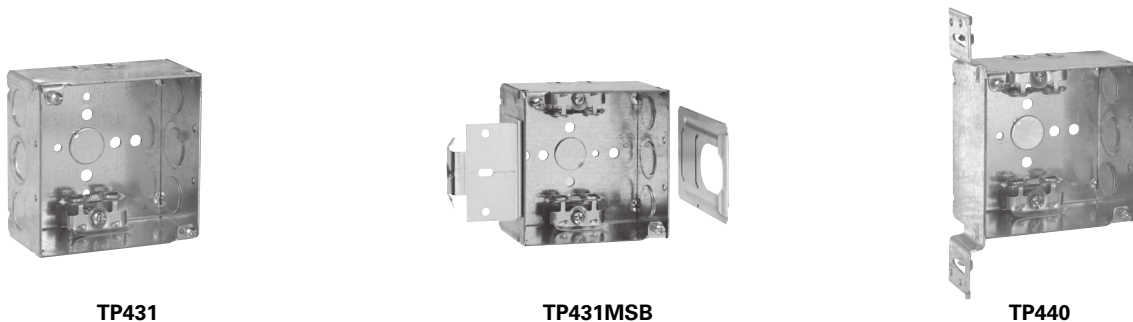
2 1/8" DEEP
FOR NON-METALLIC CABLE – CLAMPS IN EACH END
UL LISTED



| Cat. # | Bracket | Description | Knockouts | | Unit Qty. | Wt. Lbs. Per 100 |
|----------|---------|-------------|--|----------|-----------|------------------|
| | | | Sides | Bottom | | |
| TP450 | - | Welded | 4 - Cable, 4 - 1/2", 2 - 1/2" + 3/4" E | 1 - 1/2" | 25 | 90 |
| TP450MSB | MSB | Welded | 4 - Cable, 4 - 1/2", 2 - 1/2" + 3/4" E | 1 - 1/2" | 25 | 101 |
| TP450SSB | SSB | Welded | 4 - Cable, 4 - 1/2", 2 - 1/2" + 3/4" E | 1 - 1/2" | 25 | 101 |
| TP452 | "VMS" | Welded | 4 - Cable, 2 - 1/2", 1 - 1/2" + 3/4" E | 1 - 1/2" | 25 | 104 |

4" SQUARE OUTLET BOXES – 30.3 CUBIC INCH CAPACITY

2 1/8" DEEP
FOR ARMoured & METAL-CLAD (MCI) CABLE & HCF CABLE – CLAMPS IN EACH END
UL LISTED



| Cat. # | Metal Stud Sizes | Bracket | Description | Knockouts | | Unit Qty. | Wt. Lbs. Per 100 |
|-----------|------------------|---------|-------------|--|----------|-----------|------------------|
| | | | | Sides | Bottom | | |
| TP431* | - | - | Welded | 4 - Cable, 4 - 1/2", 2 - 1/2" & 3/4" E | 1 - 1/2" | 25 | 91 |
| TP431PF† | - | - | Welded | 4 - Cable, 4 - 1/2", 2 - 1/2" & 3/4" E | 1 - 1/2" | 25 | 91 |
| TP431MSB | - | MSB | Welded | 4 - Cable, 4 - 1/2", 2 - 1/2" & 3/4" E | 1 - 1/2" | 25 | 91 |
| TP431SSB* | - | SSB | Welded | 4 - Cable, 4 - 1/2", 2 - 1/2" & 3/4" E | 1 - 1/2" | 25 | 102 |
| TP440* | All | "VMS" | Welded | 4 - Cable, 2 - 1/2", 1 - 1/2" & 3/4" E | 1 - 1/2" | 25 | 103 |

*UL approved for use with aluminum interlocking grounding metal-clad cable, Type MCIA (Southwire MCAP™).

MCAP™ is a registered trademark of Southwire Company.

†TTP catalog numbers ending in PF include ground screw with pigtail lead.

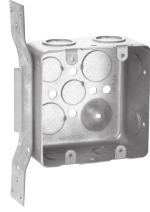
Steel Boxes

Steel Square Boxes

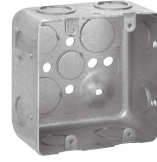
4" SQUARE TWO DEVICE BOXES – 30.3 CUBIC INCH CAPACITY

2 1/8" DEEP – FOR CONDUIT

UL LISTED



TP391



TP395

| Cat. # | Bracket | Description | Knockouts | | Unit Qty. | Wt. Lbs. Per 100 |
|--------|----------------|-------------|--------------------|--------------------|-----------|------------------|
| | | | Sides | Bottom | | |
| TP391 | "VS", Set 7/8" | Drawn | 6 - 1/2", 3 - 3/4" | 3 - 1/2", 2 - 3/4" | 25 | 95 |
| TP395 | - | Drawn | 8 - 1/2", 4 - 3/4" | 3 - 1/2", 2 - 3/4" | 25 | 84 |

4" SQUARE OUTLET BOXES – 46.0 CUBIC INCH CAPACITY

3 1/2" DEEP – FOR CONDUIT

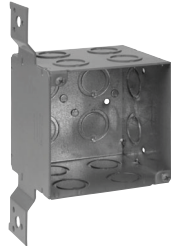
UL LISTED, FILE NO. E-15022

Applications:

- 4" square, 3 1/2" deep outlet boxes are ideal for applications requiring increased capacity, including the installation of speaker boxes, fire alarms, strobes, security cameras and other oversized devices
- For use with rigid/IMC and EMT conduit



TP411



TP411RED



TP413



TP413RED

| Cat. # | Bracket | Description | Knockouts | | Unit Qty. | Wt. Lbs. Per 100 |
|----------|---------|-------------|--------------------|-------------------|-----------|------------------|
| | | | Sides | Bottom | | |
| TP411 | Side | Welded | 12 - 1/2" + 3/4" C | 4 - 1/2" + 3/4" C | 10 | 137 |
| TP411RED | Side | Welded | 12 - 1/2" + 3/4" C | 4 - 1/2" + 3/4" C | 10 | 137 |
| TP413 | - | Welded | 12 - 1/2" + 3/4" C | 4 - 1/2" + 3/4" C | 20 | 125 |
| TP413RED | - | Welded | 12 - 1/2" + 3/4" C | 4 - 1/2" + 3/4" C | 20 | 125 |