



PIETRA BELLO

Simplicity is the key to everyday design and our Pietra Bello white marble mosaics, will be your new best friend. Available in beautiful Bianco Bello in variety of shapes for multiple applications, the collection features easy style in natural stone at a fantastic price point.

WALKER
ZANGER
STONE & TILE



Mosaic



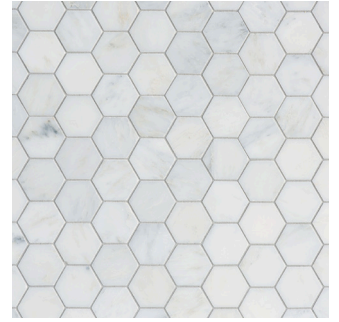
Chevron
12-1/8" x 10-5/8"
2PBEBBECHE



Herringbone
11-7/16" x 11-15/16"
2PBEBBEHB



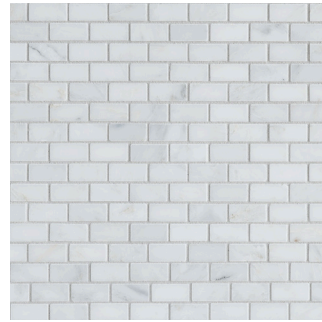
3-1/2" Hex
10-5/8" x 12-3/8"
2PBEBBEHEX3-1/2



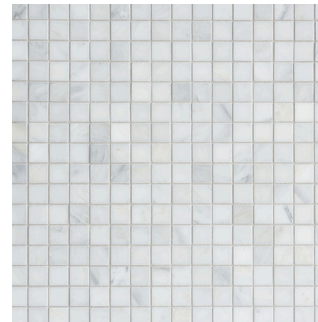
2" Hex
11-3/4" x 12"
2PBEBBEHEX2



Penny Round
12-1/8" x 12-3/4"
2PBEBBEPR



Petit Brick Mosaic
12" x 12"
2PBEBBEPB



Mosaic Feild
12" x 12"
2PBEBBE1X1

Field



Pietra Bello Field
3" x 6"
2PBEBBE3X6



Beveled Brick
3" x 6"
2PBEBBE3X6

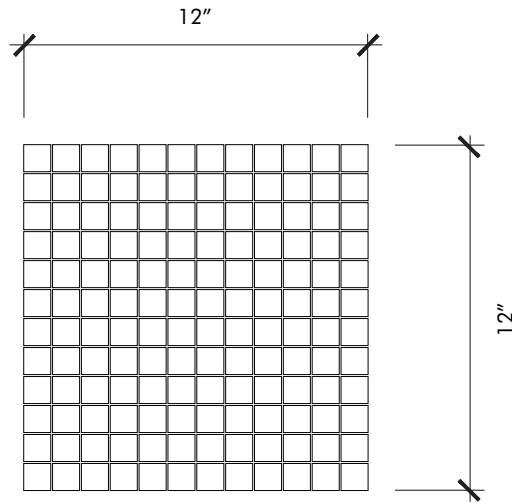


Pietra Bello Field
3" x 12"
2PBEBBE3X12






Liners






Pencil Liner
5/8" x 12"
2PBEBBEPL



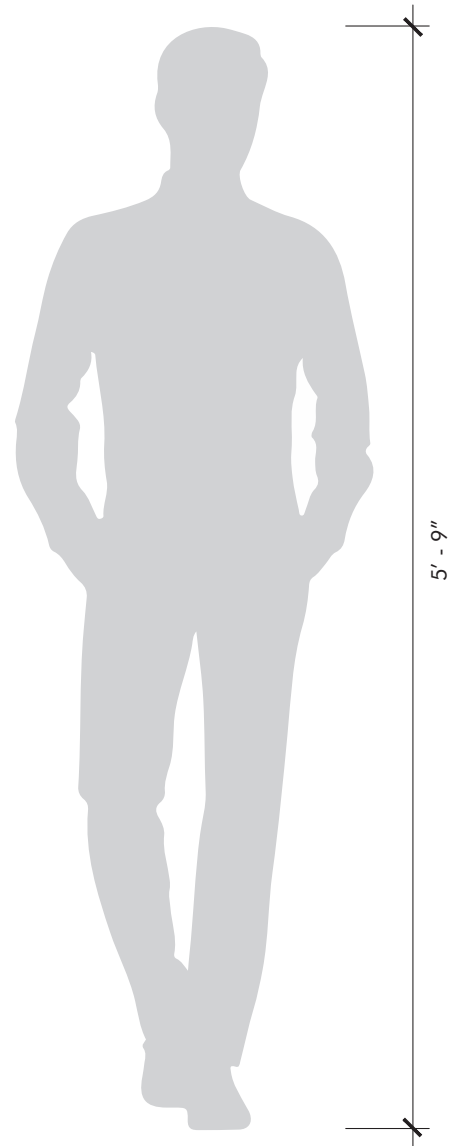
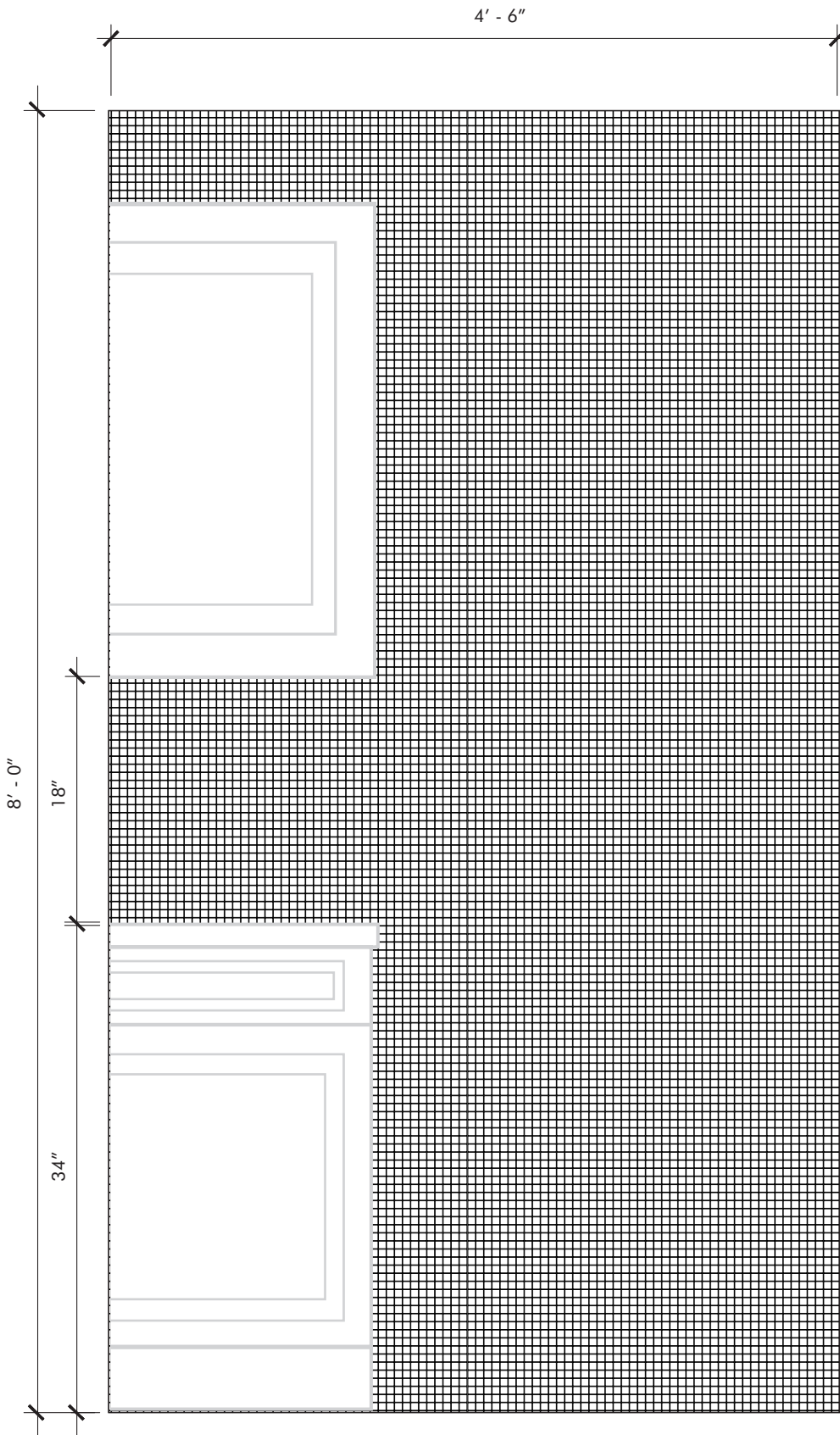
Material	Stone Mosaic & Waterjet
Finish	Honed
Thickness	3/8"
Cut and Fill Size	1" x 1"
Square Feet/Piece	1.0000
Mounting	Mesh
Available Colors Bianco Bello	

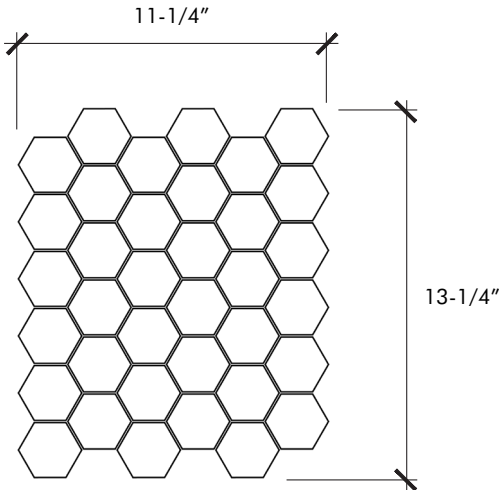
Usage	
	Commercial Interior Floor & Wall
	Residential Interior Floor & Wall
	Shower Floor
	Shower Wall
	Steam Shower

Material Data	
	Color Variation
Sealing	
	Sealing required prior to grouting
Cleaning and Maintenance	
	Protect from harsh abrasive cleaners and tools <i>Recommended: Oceancare or Dry Treat products</i>

Notes:

- If used for shower floors, must include waterproof membrane on substrate and 12 inches up adjacent walls prior to tile installation.
- We recommend sealing all natural stone products with a penetrating sealer and sealing all porous non-polished stone (limestone, tumbled marble, etc.) prior to grouting. This prevents grout from staining or affecting the color of the stone.
Stone is a natural product, and care should be taken to protect it from harsh abrasive cleaners and abrasive cleaning tools.
- White thin-set or mortar is required: light limestones, tumbled stones, "antiqued stones", and light colored marbles
- May be characterized by dry seams, pits, fossils, and glass veins (honed stones are often filled at the factory)





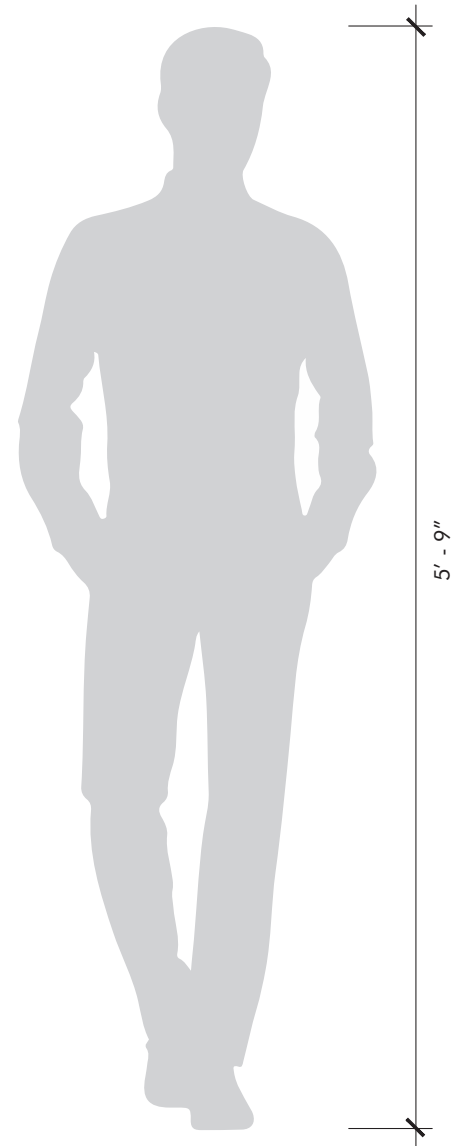
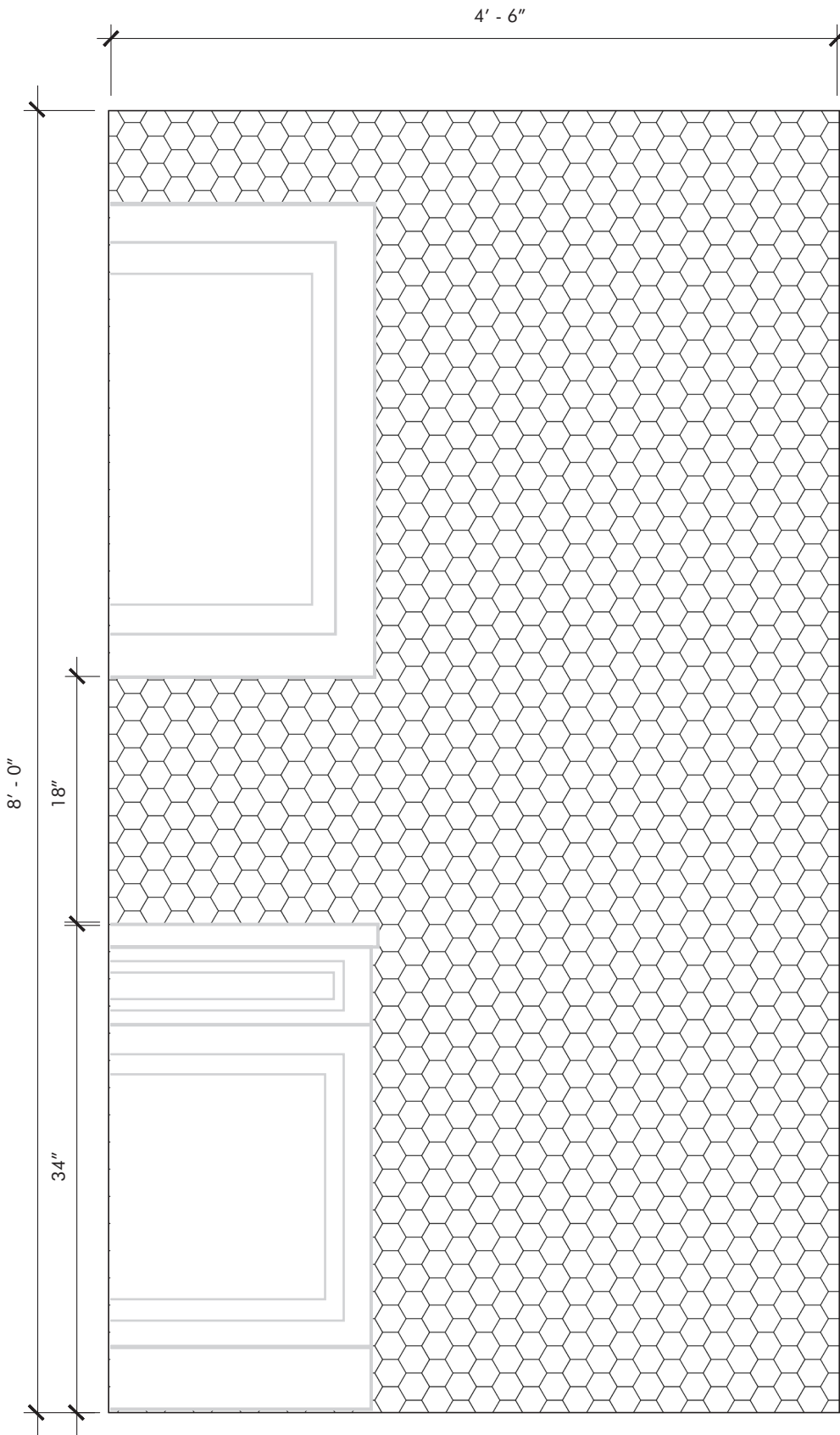
Material	Stone Mosaic & Waterjet
Finish	Honed
Thickness	3/8"
Cut and Fill Size	11-3/4" x 12"
Square Feet/Piece	0.9792
Mounting	Mesh
Available Colors Bianco Bello	

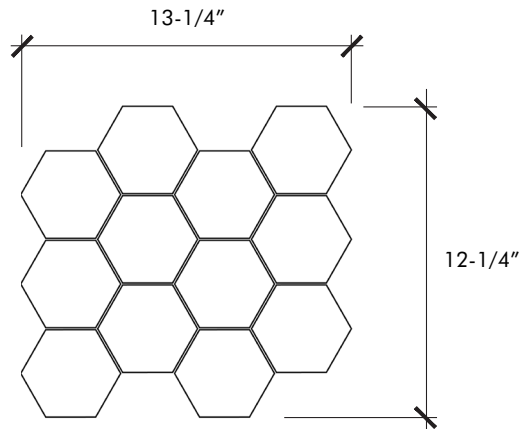
Usage	
	Commercial Interior Floor & Wall
	Exterior Wall
	Residential Bathroom Floor
	Residential Interior Floor & Wall
	Shower Floor
	Shower Wall
	Steam Shower

Material Data	
	Color Variation
Sealing	
	Sealing required prior to grouting
Cleaning and Maintenance	
	Protect from harsh abrasive cleaners and tools Recommended: Oceancare or Dry Treat products

Notes:

- If used for shower floors, must include waterproof membrane on substrate and 12 inches up adjacent walls prior to tile installation.
- We recommend sealing all natural stone products with a penetrating sealer and sealing all porous non-polished stone (limestone, tumbled marble, etc.) prior to grouting. This prevents grout from staining or affecting the color of the stone.
- Stone is a natural product, and care should be taken to protect it from harsh abrasive cleaners and abrasive cleaning tools.
- White thin-set or mortar is required: light limestones, tumbled stones, "antiqued stones", and light colored marbles
- May be characterized by dry seams, pits, fossils, and glass veins (honed stones are often filled at the factory)





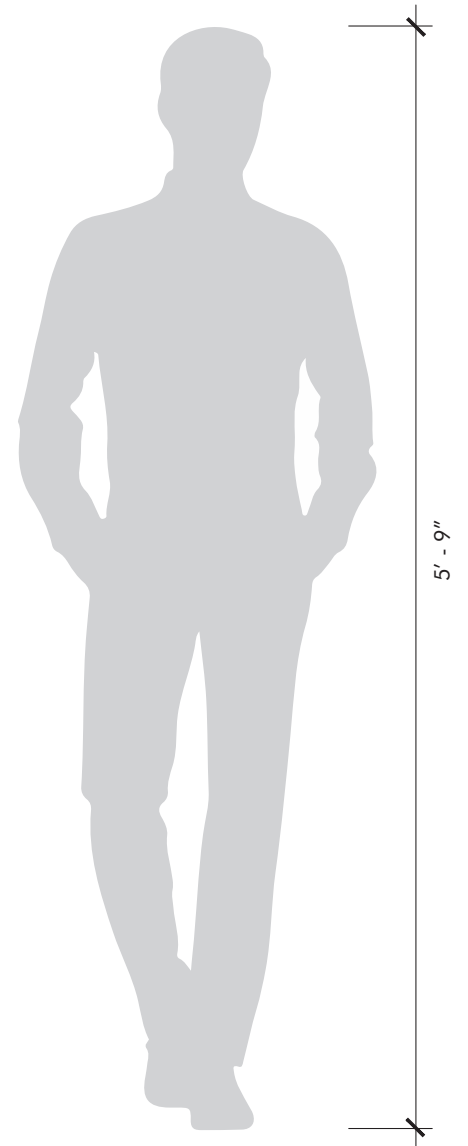
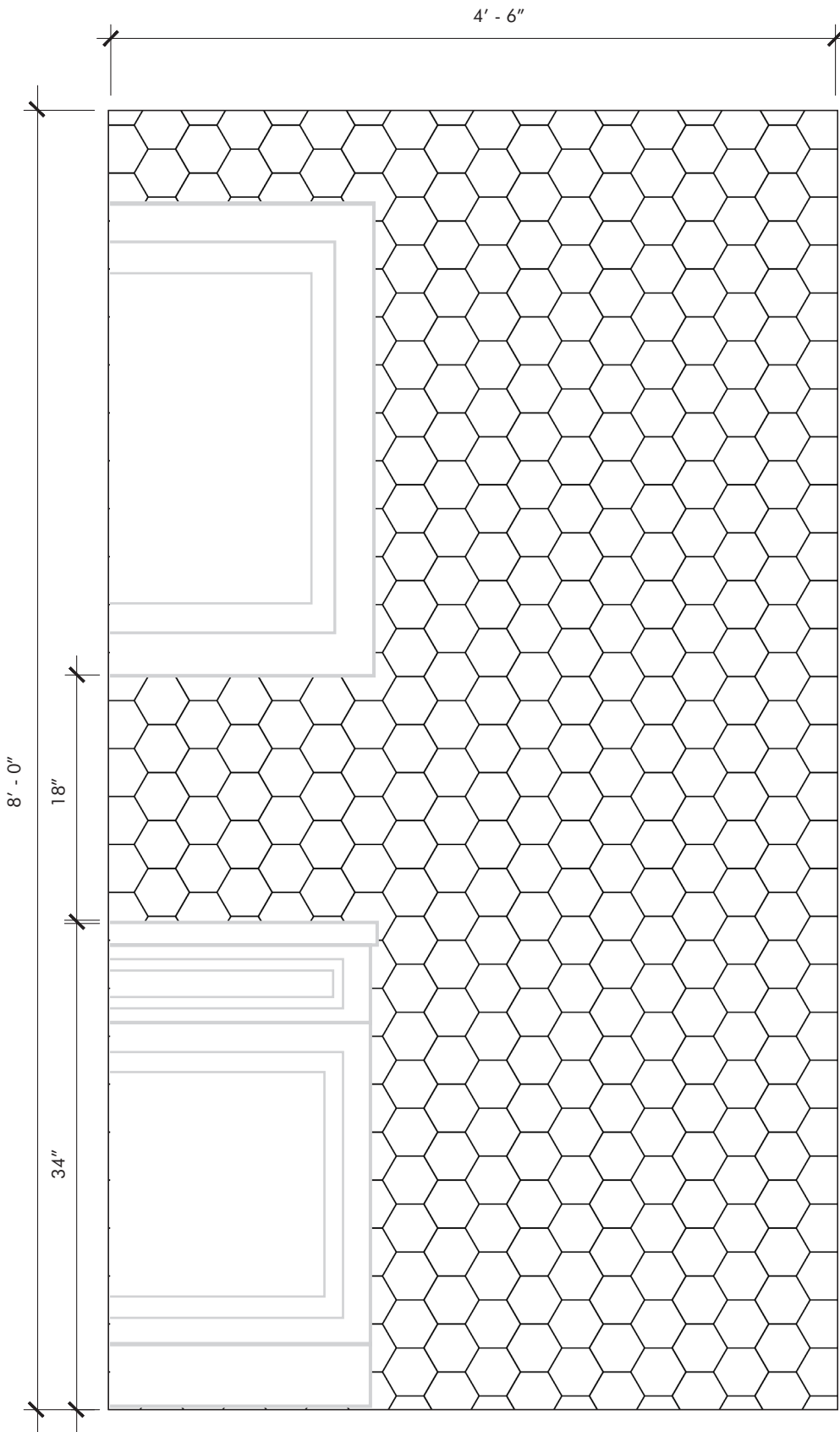
Material	Stone Mosaic & Waterjet
Finish	Honed
Thickness	3/8"
Cut and Fill Size	10-5/8" x 12-3/8"
Square Feet/Piece	0.9131
Mounting	Mesh
Available Colors Bianco Bello	

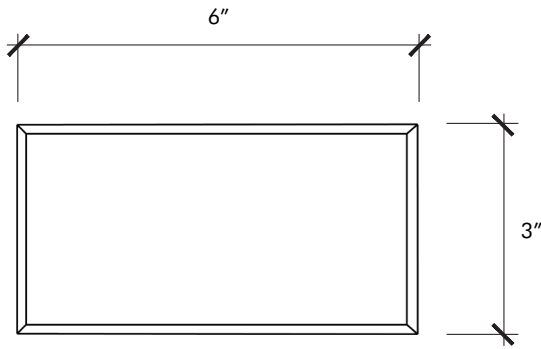
Usage	
	Commercial Interior Floor & Wall
	Exterior Wall
	Residential Bathroom Floor
	Residential Interior Floor & Wall
	Shower Floor
	Shower Wall
	Steam Shower

Material Data	
	Color Variation
Sealing	
	Sealing required prior to grouting
Cleaning and Maintenance	
	Protect from harsh abrasive cleaners and tools Recommended: Oceancare or Dry Treat products

Notes:

- If used for shower floors, must include waterproof membrane on substrate and 12 inches up adjacent walls prior to tile installation.
- We recommend sealing all natural stone products with a penetrating sealer and sealing all porous non-polished stone (limestone, tumbled marble, etc.) prior to grouting. This prevents grout from staining or affecting the color of the stone.
Stone is a natural product, and care should be taken to protect it from harsh abrasive cleaners and abrasive cleaning tools.
- White thin-set or mortar is required: light limestones, tumbled stones, "antiqued stones", and light colored marbles
- May be characterized by dry seams, pits, fossils, and glass veins (honed stones are often filled at the factory)





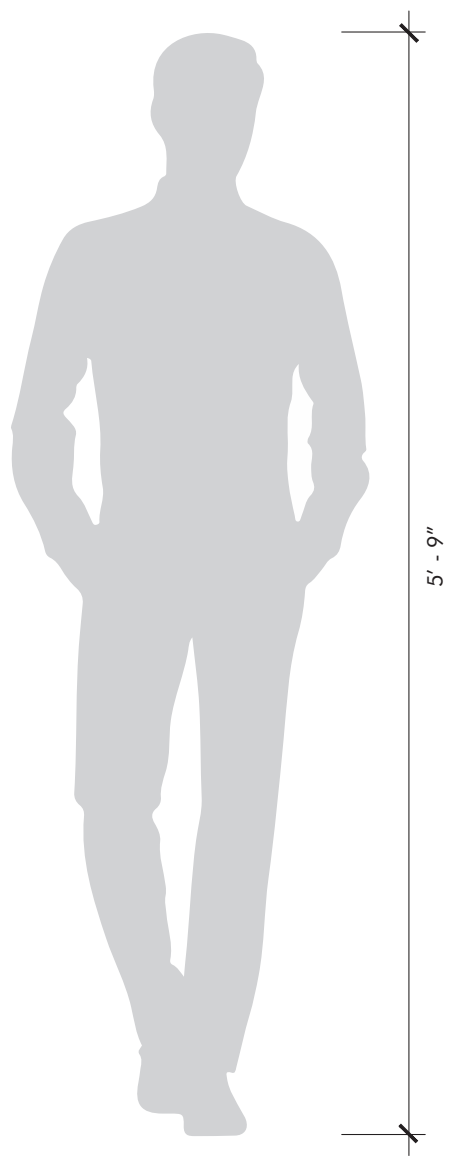
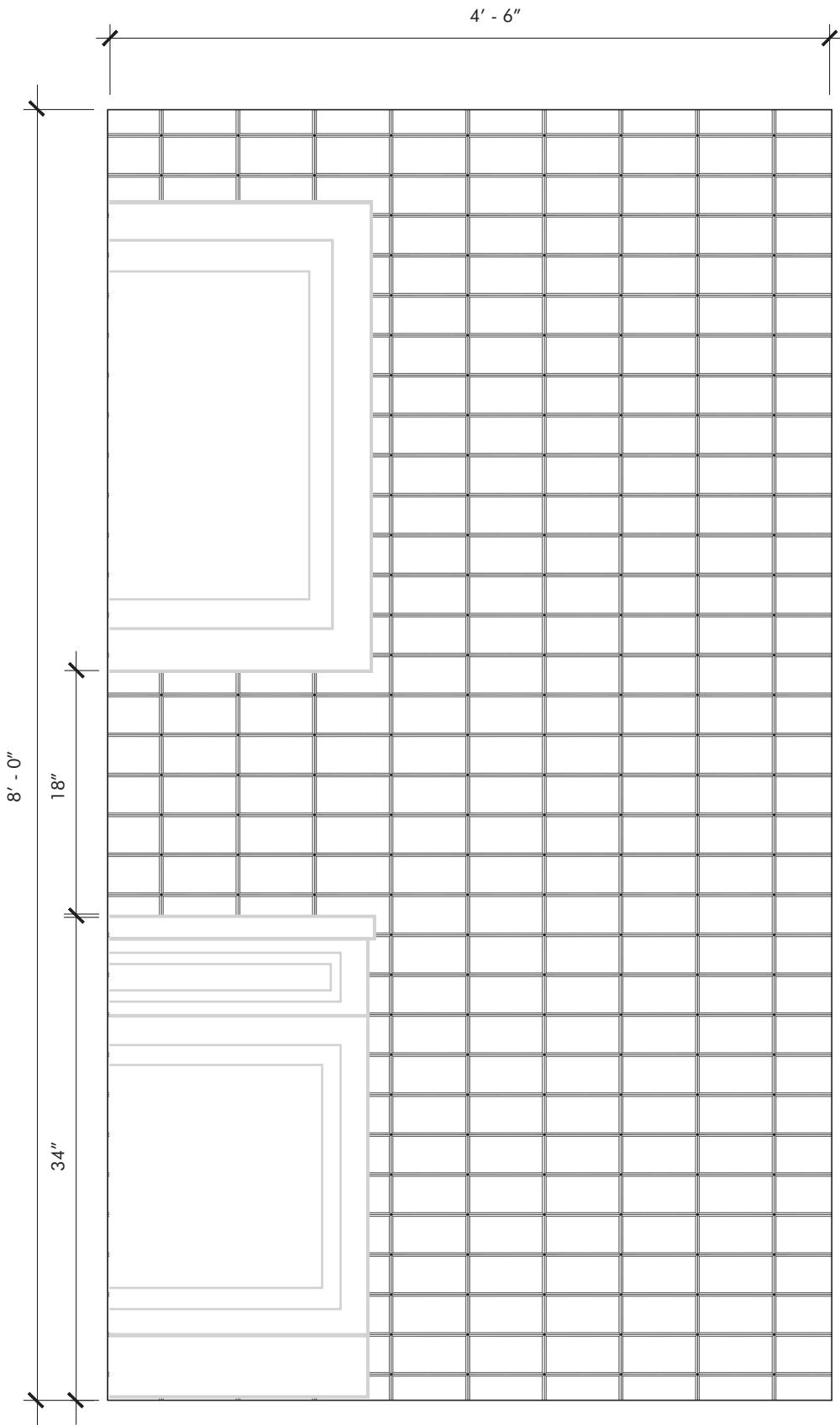
Material	Stone Mosaic & Waterjet
Finish	Honed
Thickness	3/8"
Cut and Fill Size	3" x 6"
Square Feet/Piece	0.1250
Mounting	Loose
Available Colors Bianco Bello	

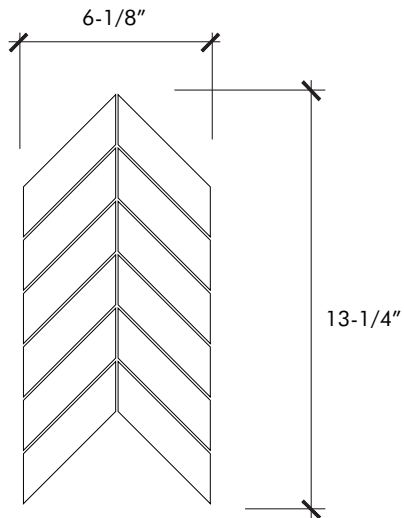
Usage	
	Commercial Interior Floor & Wall
	Exterior Wall
	Residential Bathroom Floor
	Residential Interior Floor & Wall
	Shower Floor
	Shower Wall
	Steam Shower

Material Data	
	Color Variation
Sealing	
	Sealing required prior to grouting
Cleaning and Maintenance	
	Protect from harsh abrasive cleaners and tools Recommended: Oceancare or Dry Treat products

Notes:

- If used for shower floors, must include waterproof membrane on substrate and 12 inches up adjacent walls prior to tile installation.
- We recommend sealing all natural stone products with a penetrating sealer and sealing all porous non-polished stone (limestone, tumbled marble, etc.) prior to grouting. This prevents grout from staining or affecting the color of the stone.
Stone is a natural product, and care should be taken to protect it from harsh abrasive cleaners and abrasive cleaning tools.
- White thin-set or mortar is required: light limestones, tumbled stones, "antiqued stones", and light colored marbles
- May be characterized by dry seams, pits, fossils, and glass veins (honed stones are often filled at the factory)





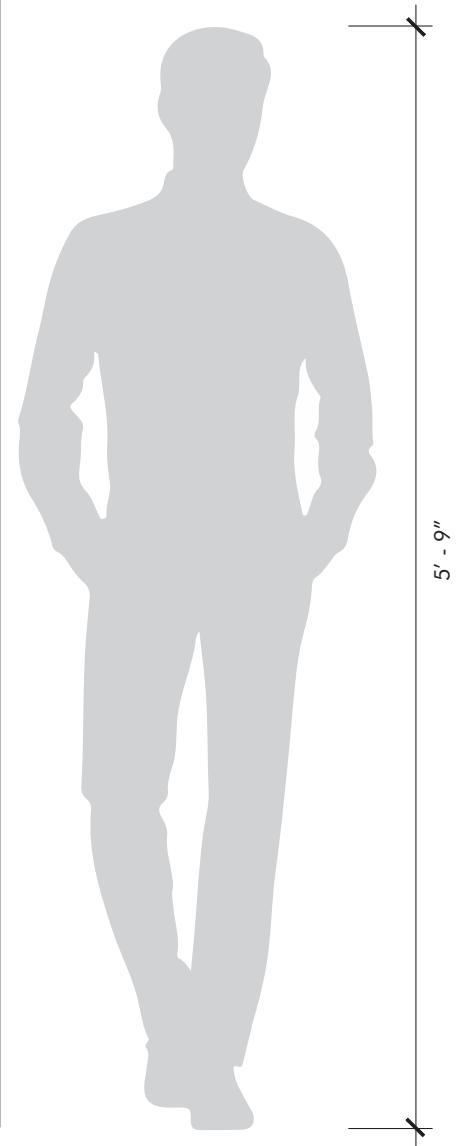
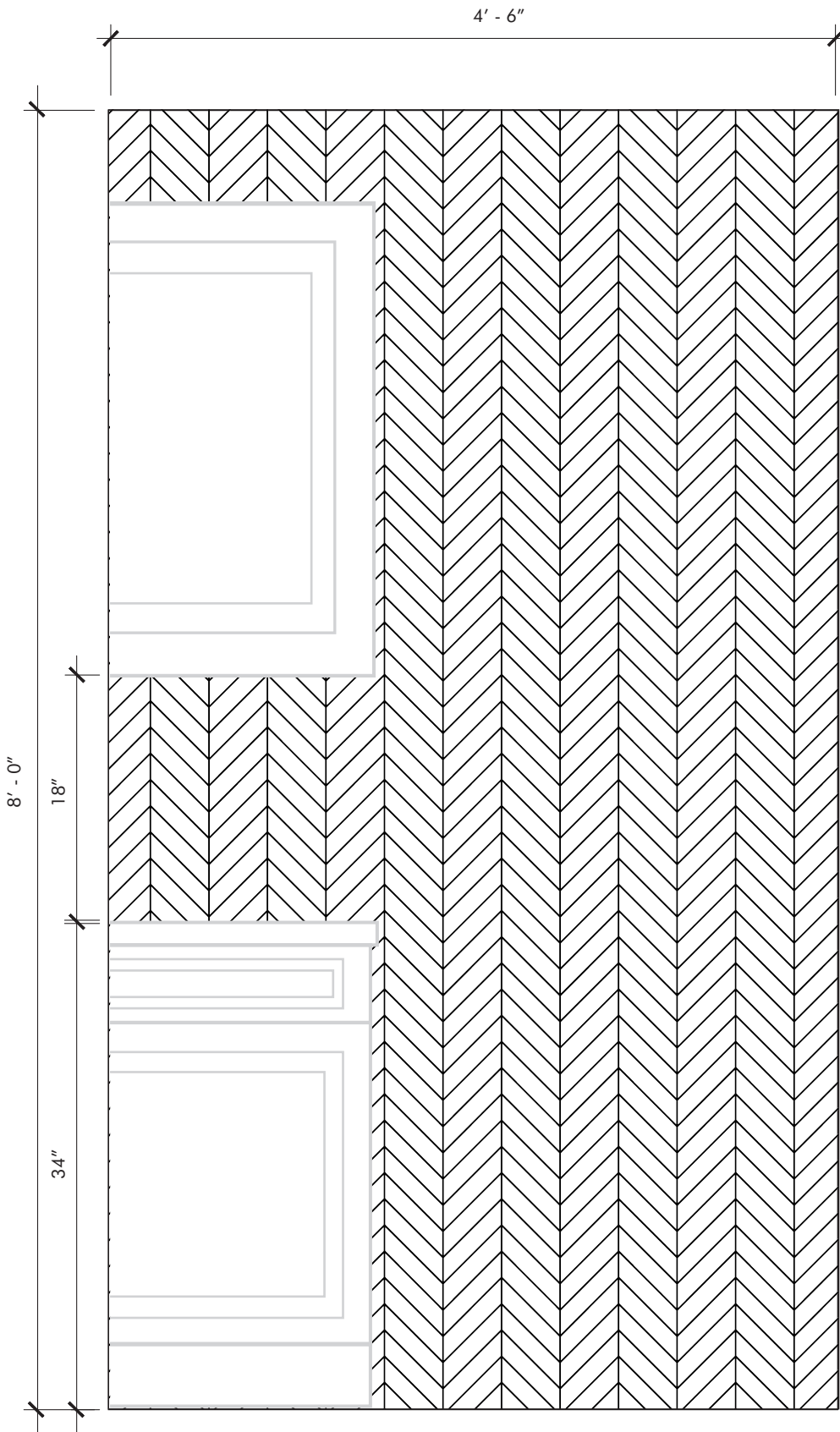
Material	Stone Mosaic & Waterjet
Finish	Honed
Thickness	3/8"
Cut and Fill Size	12-1/8" x 10-5/8"
Square Feet/Piece	0.8946
Mounting	Mesh
Available Colors	
Bianco Bello	

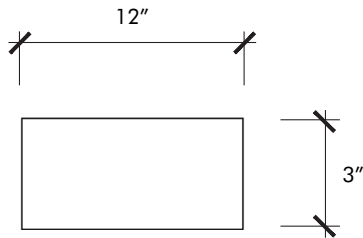
Usage	
	Commercial Interior Floor & Wall
	Exterior Wall
	Residential Bathroom Floor
	Residential Interior Floor & Wall
	Shower Floor
	Shower Wall
	Steam Shower

Material Data	
	Color Variation
Sealing	
	Sealing required prior to grouting
Cleaning and Maintenance	
	Protect from harsh abrasive cleaners and tools Recommended: Oceancare or Dry Treat products








Notes:




- If used for shower floors, must include waterproof membrane on substrate and 12 inches up adjacent walls prior to tile installation.
- We recommend sealing all natural stone products with a penetrating sealer and sealing all porous non-polished stone (limestone, tumbled marble, etc.) prior to grouting. This prevents grout from staining or affecting the color of the stone.
- Stone is a natural product, and care should be taken to protect it from harsh abrasive cleaners and abrasive cleaning tools.
- White thin-set or mortar is required: light limestones, tumbled stones, "antiqued stones", and light colored marbles
- May be characterized by dry seams, pits, fossils, and glass veins (honed stones are often filled at the factory)





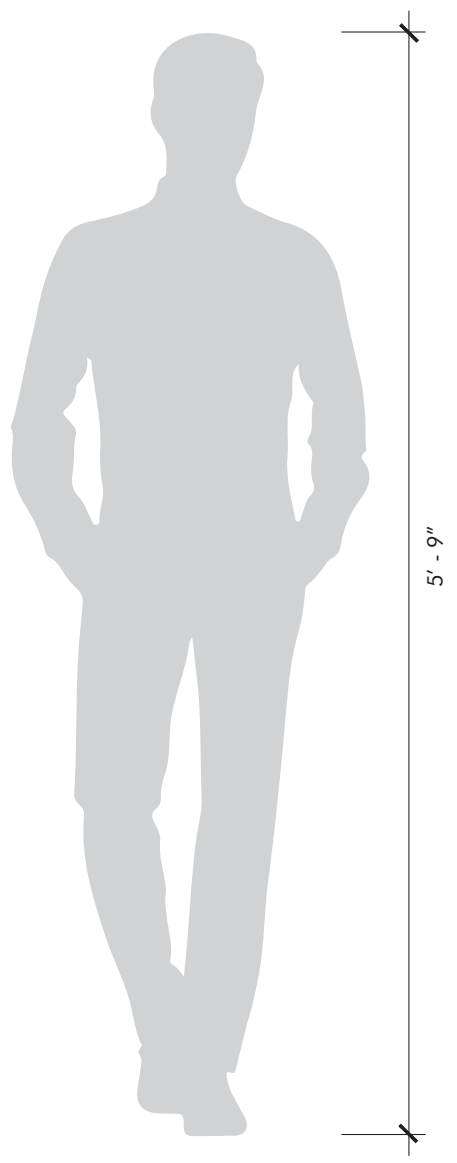
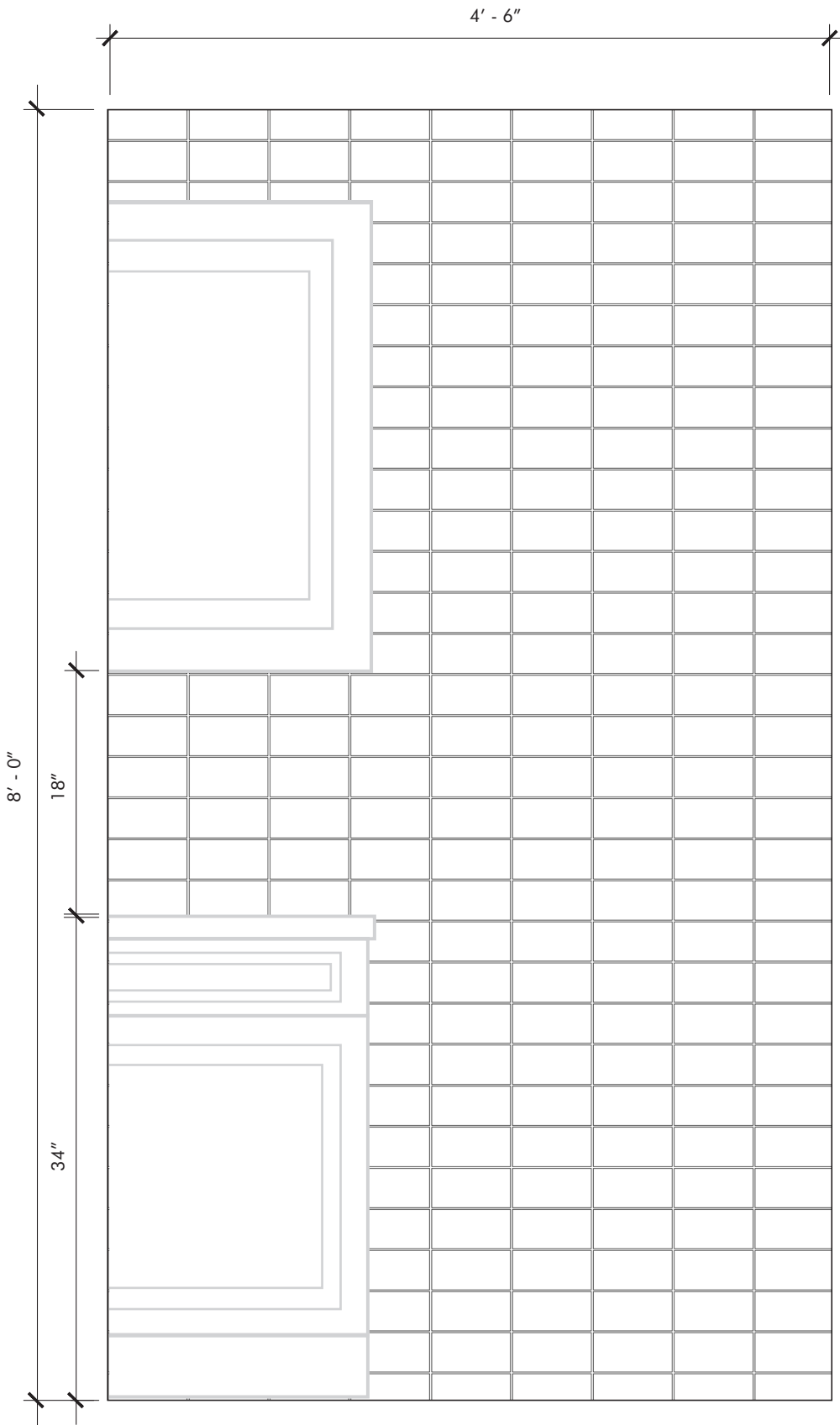
Material	Stone Mosaic & Waterjet
Finish	Honed
Thickness	3/8"
Cut and Fill Size	3" x 6"
Square Feet/Piece	0.1250
Mounting	Loose
Available Colors Bianco Bello	

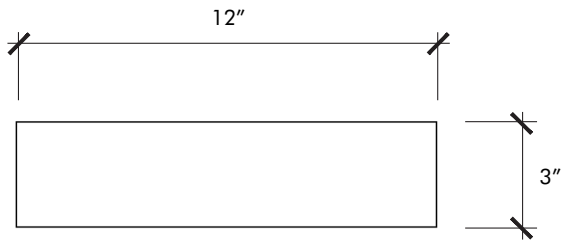
Usage	
	Commercial Interior Floor & Wall
	Exterior Wall
	Residential Bathroom Floor
	Residential Interior Floor & Wall
	Shower Floor
	Shower Wall
	Steam Shower

Material Data	
	Color Variation
Sealing	
	Sealing required prior to grouting
Cleaning and Maintenance	
	Protect from harsh abrasive cleaners and tools <i>Recommended: Oceancare or Dry Treat products</i>








Notes:




- If used for shower floors, must include waterproof membrane on substrate and 12 inches up adjacent walls prior to tile installation.
- We recommend sealing all natural stone products with a penetrating sealer and sealing all porous non-polished stone (limestone, tumbled marble, etc.) prior to grouting. This prevents grout from staining or affecting the color of the stone.
Stone is a natural product, and care should be taken to protect it from harsh abrasive cleaners and abrasive cleaning tools.
- White thin-set or mortar is required: light limestones, tumbled stones, "antiqued stones", and light colored marbles
- May be characterized by dry seams, pits, fossils, and glass veins (honed stones are often filled at the factory)





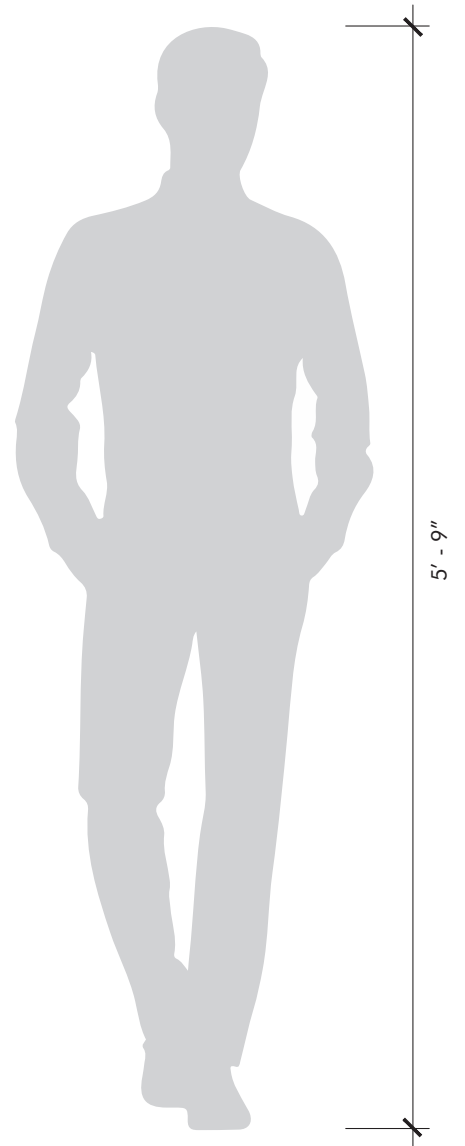
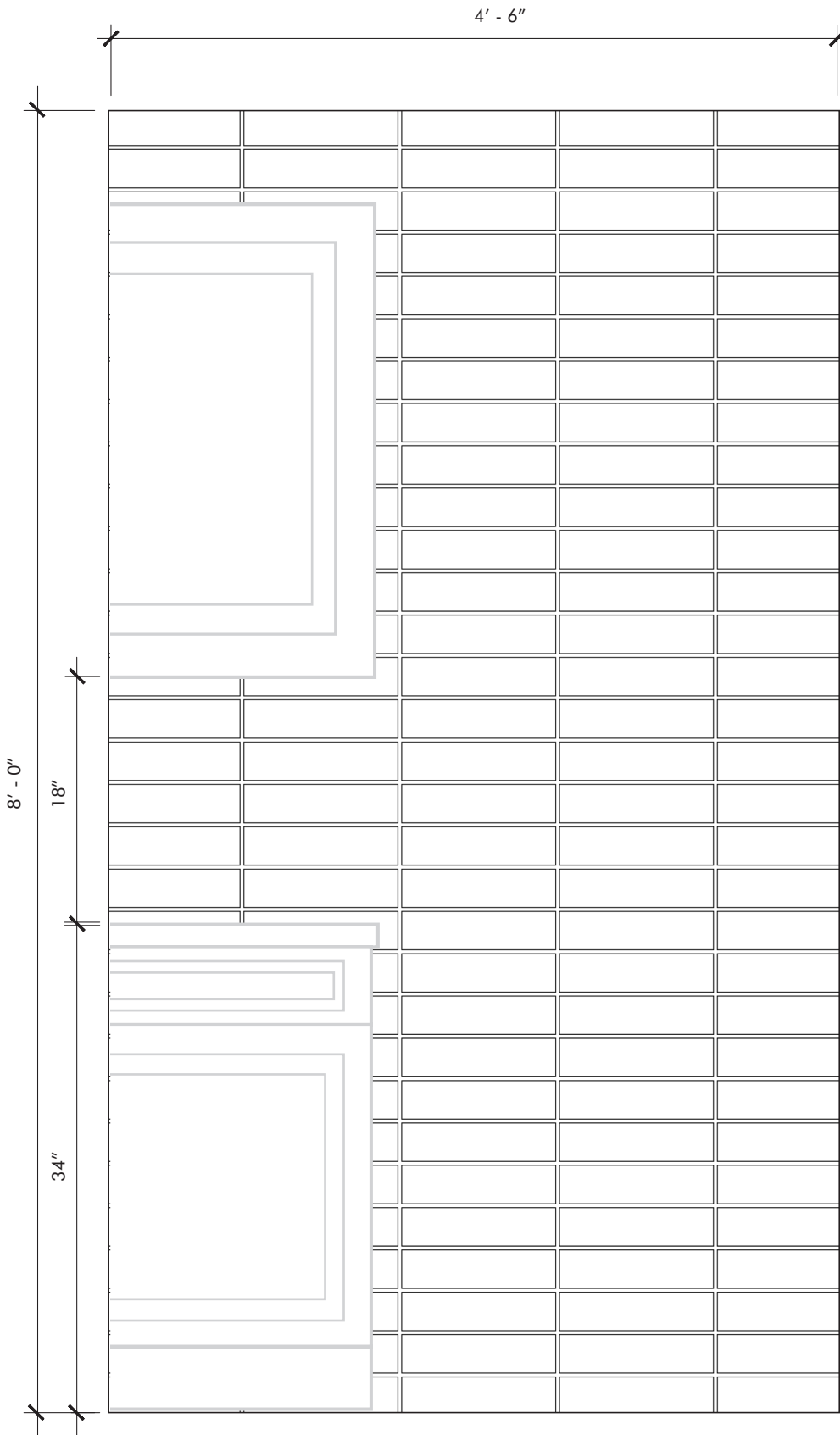
Material	Stone Mosaic & Waterjet
Finish	Honed
Thickness	3/8"
Cut and Fill Size	3" x 12"
Square Feet/Piece	0.2500
Mounting	Loose
Available Colors Bianco Bello	

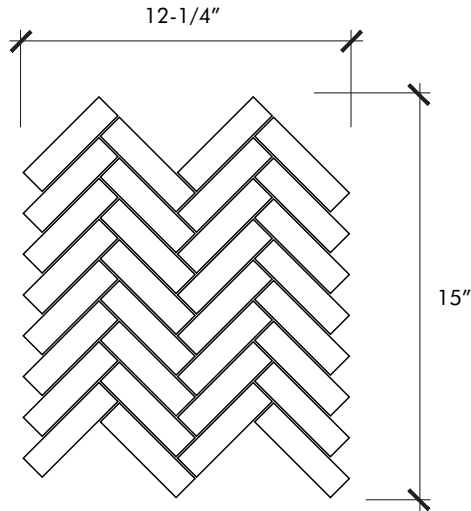
Usage	
	Commercial Interior Floor & Wall
	Exterior Wall
	Residential Bathroom Floor
	Residential Interior Floor & Wall
	Shower Floor
	Shower Wall
	Steam Shower

Material Data	
	Color Variation
Sealing	
	Sealing required prior to grouting
Cleaning and Maintenance	
	Protect from harsh abrasive cleaners and tools Recommended: Oceancare or Dry Treat products








Notes:




- If used for shower floors, must include waterproof membrane on substrate and 12 inches up adjacent walls prior to tile installation.
- We recommend sealing all natural stone products with a penetrating sealer and sealing all porous non-polished stone (limestone, tumbled marble, etc.) prior to grouting. This prevents grout from staining or affecting the color of the stone.
Stone is a natural product, and care should be taken to protect it from harsh abrasive cleaners and abrasive cleaning tools.
- White thin-set or mortar is required: light limestones, tumbled stones, "antiqued stones", and light colored marbles
- May be characterized by dry seams, pits, fossils, and glass veins (honed stones are often filled at the factory)





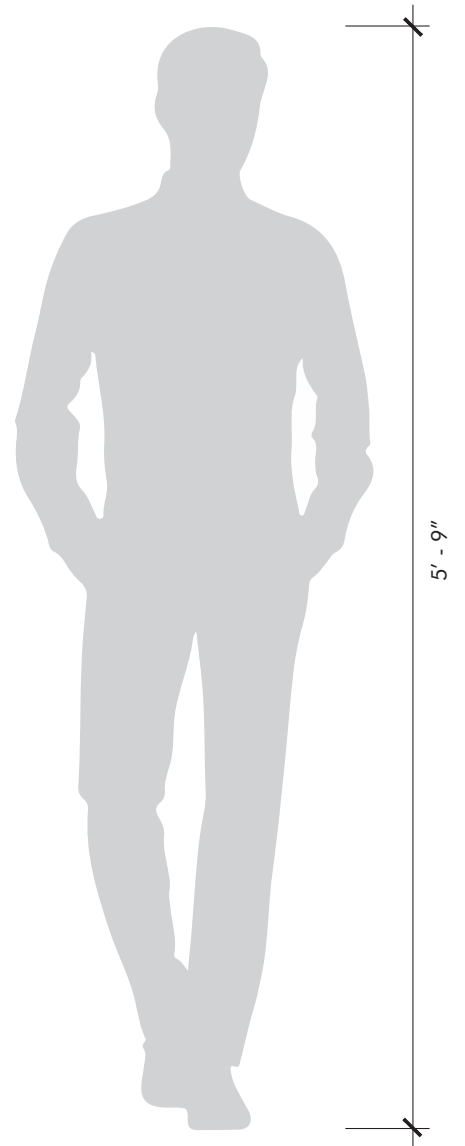
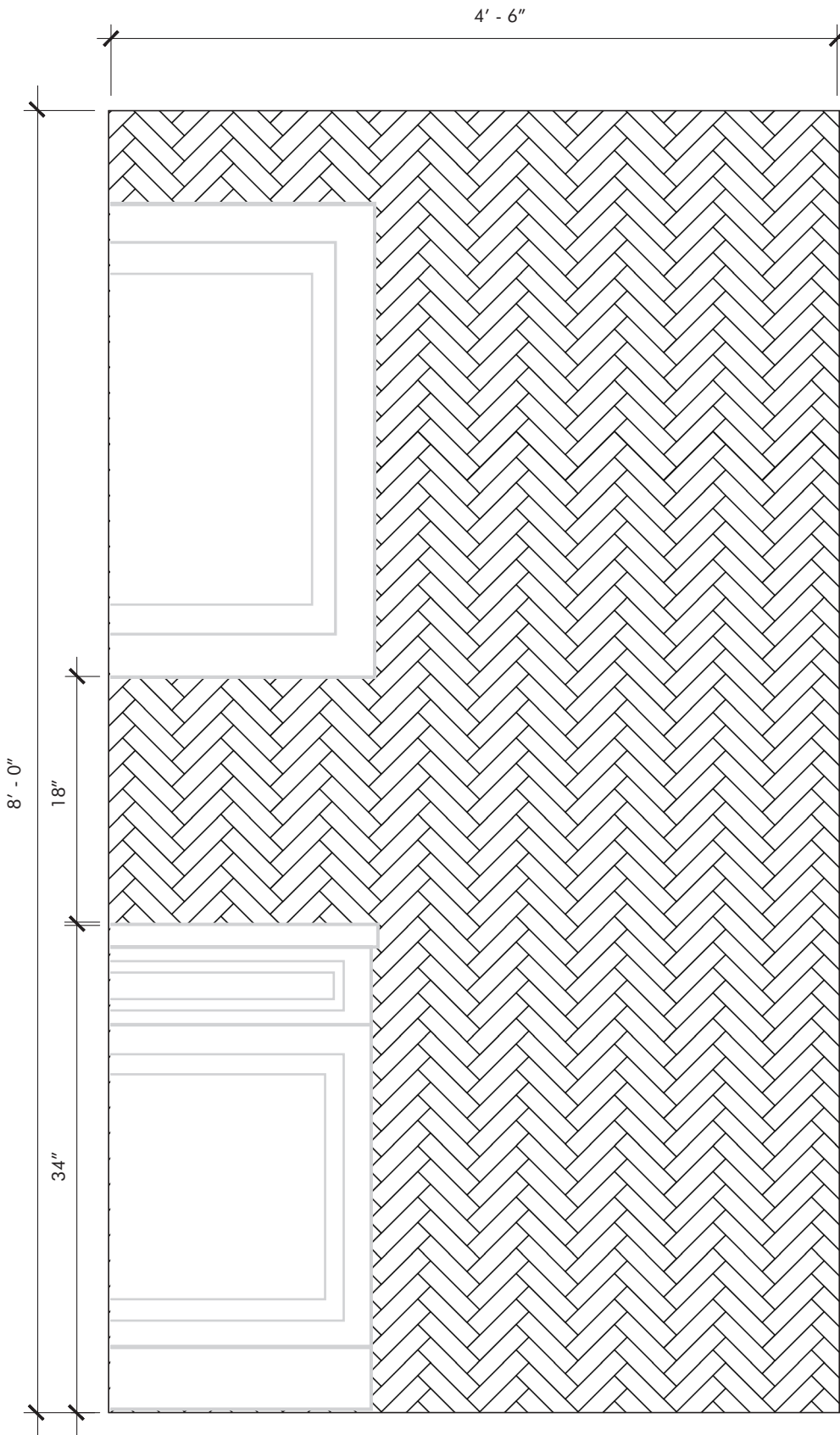
Material	Stone Mosaic & Waterjet
Finish	Honed
Thickness	3/8"
Cut and Fill Size	11-7/16" x 11-15/16"
Square Feet/Piece	0.9482
Mounting	Mesh
Available Colors Bianco Bello	

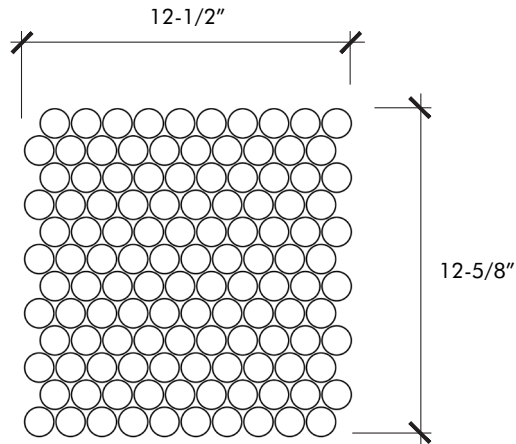
Usage	
	Commercial Interior Floor & Wall
	Exterior Wall
	Residential Bathroom Floor
	Residential Interior Floor & Wall
	Shower Floor
	Shower Wall
	Steam Shower

Material Data	
	Color Variation
Sealing	
	Sealing required prior to grouting
Cleaning and Maintenance	
	Protect from harsh abrasive cleaners and tools Recommended: Oceancare or Dry Treat products

Notes:

- If used for shower floors, must include waterproof membrane on substrate and 12 inches up adjacent walls prior to tile installation.
- We recommend sealing all natural stone products with a penetrating sealer and sealing all porous non-polished stone (limestone, tumbled marble, etc.) prior to grouting. This prevents grout from staining or affecting the color of the stone.
Stone is a natural product, and care should be taken to protect it from harsh abrasive cleaners and abrasive cleaning tools.
- White thin-set or mortar is required: light limestones, tumbled stones, "antiqued stones", and light colored marbles
- May be characterized by dry seams, pits, fossils, and glass veins (honed stones are often filled at the factory)





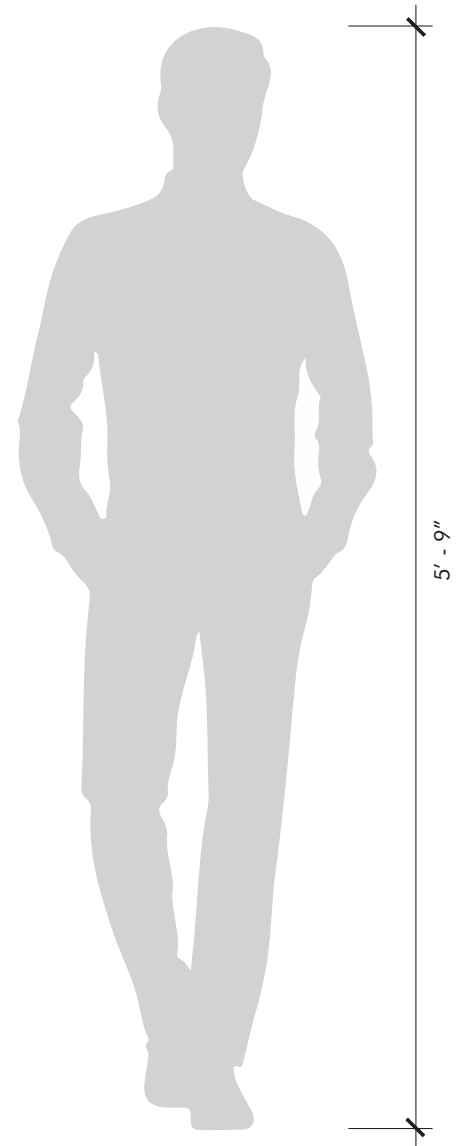
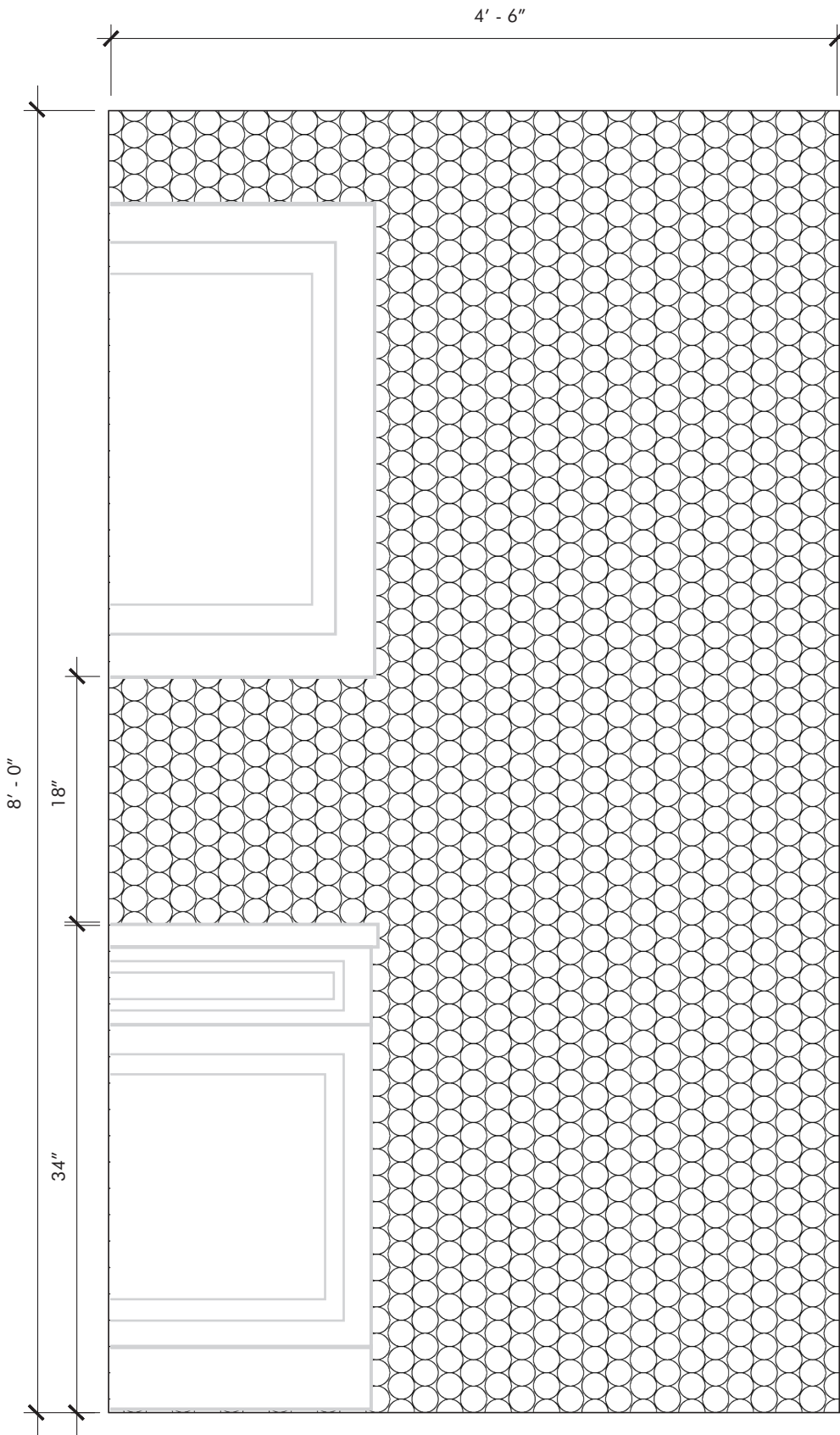
Material	Stone Mosaic & Waterjet
Finish	Honed
Thickness	3/8"
Cut and Fill Size	12-1/8" x 12-3/4"
Square Feet/Piece	1.0737
Mounting	Mesh
Available Colors	
Bianco Bello	

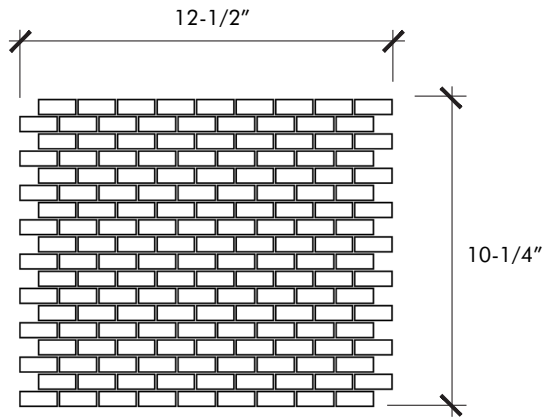
Usage	
	Commercial Interior Floor & Wall
	Exterior Wall
	Residential Bathroom Floor
	Residential Interior Floor & Wall
	Shower Floor
	Shower Wall
	Steam Shower

Material Data	
	Color Variation
Sealing	
	Sealing required prior to grouting
Cleaning and Maintenance	
	Protect from harsh abrasive cleaners and tools Recommended: Oceancare or Dry Treat products

Notes:

- If used for shower floors, must include waterproof membrane on substrate and 12 inches up adjacent walls prior to tile installation.
- We recommend sealing all natural stone products with a penetrating sealer and sealing all porous non-polished stone (limestone, tumbled marble, etc.) prior to grouting. This prevents grout from staining or affecting the color of the stone.
Stone is a natural product, and care should be taken to protect it from harsh abrasive cleaners and abrasive cleaning tools.
- White thin-set or mortar is required: light limestones, tumbled stones, "antiqued stones", and light colored marbles
- May be characterized by dry seams, pits, fossils, and glass veins (honed stones are often filled at the factory)





Material	Stone Mosaic & Waterjet
Finish	Honed
Thickness	3/8"
Cut and Fill Size	12" x 12"
Square Feet/Piece	1.0000
Mounting	Mesh
Available Colors Bianco Bello	

Usage	
	Commercial Interior Floor & Wall
	Exterior Wall
	Residential Bathroom Floor
	Residential Interior Floor & Wall
	Shower Floor
	Shower Wall
	Steam Shower

Material Data	
	Color Variation
Sealing	
	Sealing required prior to grouting
Cleaning and Maintenance	
	Protect from harsh abrasive cleaners and tools Recommended: Oceancare or Dry Treat products

Notes:

- If used for shower floors, must include waterproof membrane on substrate and 12 inches up adjacent walls prior to tile installation.
- We recommend sealing all natural stone products with a penetrating sealer and sealing all porous non-polished stone (limestone, tumbled marble, etc.) prior to grouting. This prevents grout from staining or affecting the color of the stone.
Stone is a natural product, and care should be taken to protect it from harsh abrasive cleaners and abrasive cleaning tools.
- White thin-set or mortar is required: light limestones, tumbled stones, "antiqued stones", and light colored marbles
- May be characterized by dry seams, pits, fossils, and glass veins (honed stones are often filled at the factory)

