

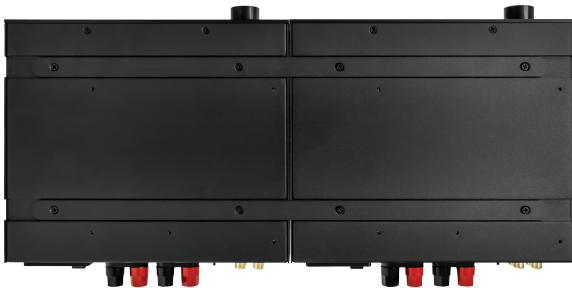
Contents.

- 2 - Metal straps
- 2 - Small rack ears
- 8 - 3x6mm flat-head strap to amp screws
- 8 - 3x8mm flat-head rack ear to amp screws
- 4 - 10-32 x .75" rack mount screws

1. Remove the feet of both amps using a Phillips-Head screwdriver



2. Attach the 2 metal straps using the supplied 3x6mm flat-head screws NOTE: DO NOT use the feet screws. They are longer & could cause internal amp damage.



3. Remove 4 screws from left & right sides & use the removed screws or the 8 3x8mm screws provided with the AMP50/2-RACK-KIT to attach rack ears.



4. The dual strapped amps are ready to mount into a 1U rack space.



www.elura.audio

MSTR

