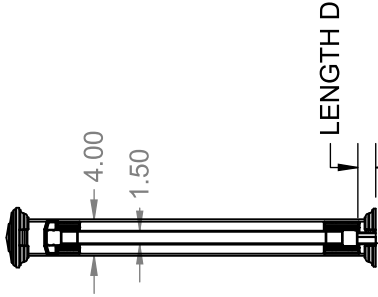
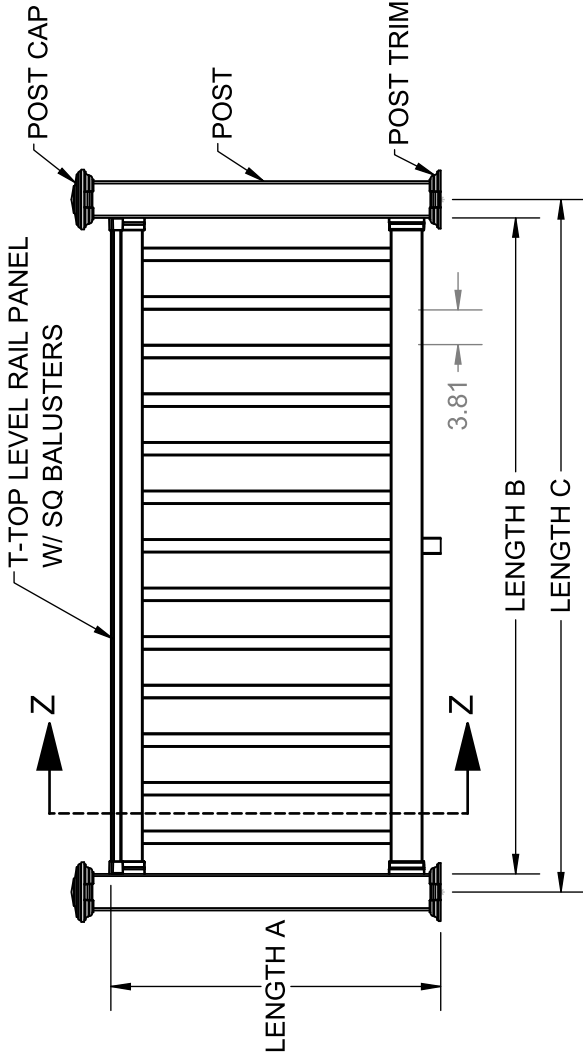
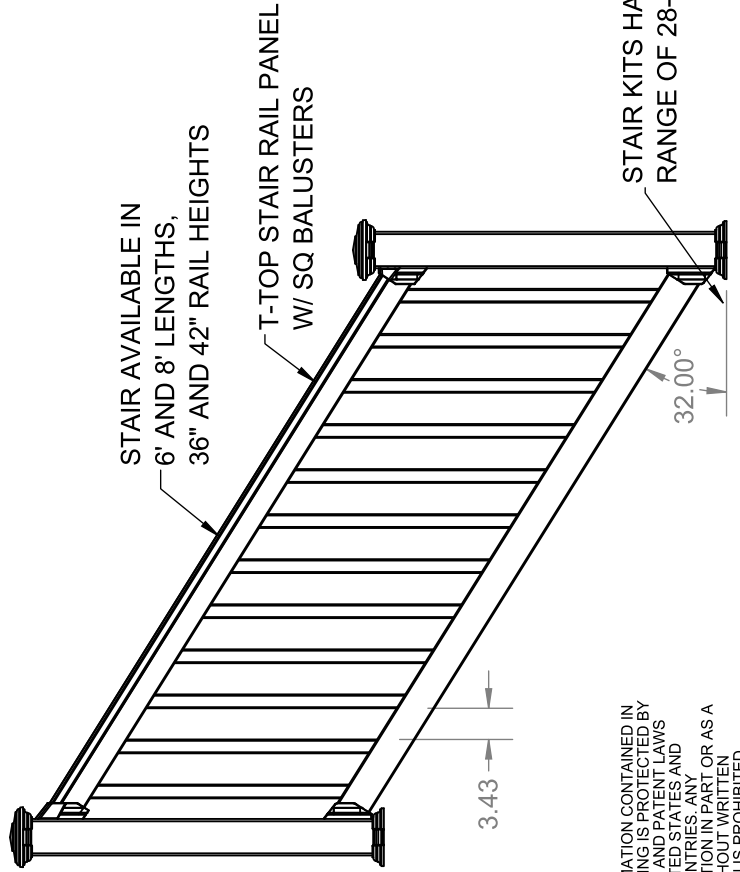


FINYL LINE T-TOP LEVEL AND STAIR RAIL DETAILS



SECTION Z-Z
SCALE 1 : 21

- NOTE:
- (A) FINISHED RAIL HEIGHT = 36", 42"
 - (B) PANEL LENGTH = 47.75", 59.75", 71.75", 83.75", 95.75", 119.75"
 - (C) MAX SPANS = 98.5X36" IRC, 98.5X42" IBC
 - (D) BOTTOM SPACE = 2"



STAIR KITS HAVE A WORKING RANGE OF 28-38 DEGREES.

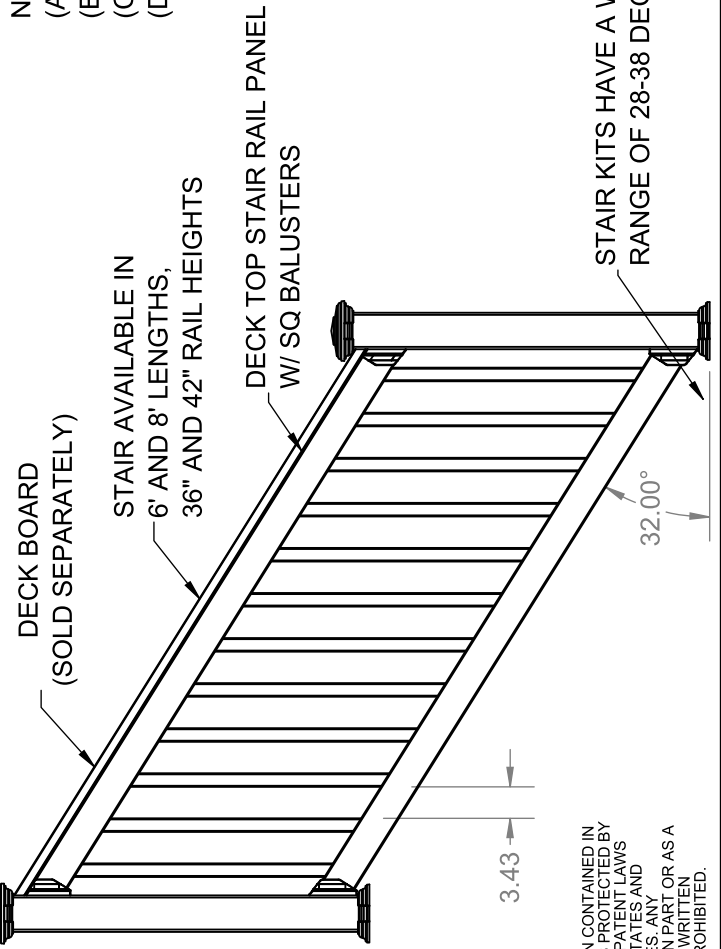
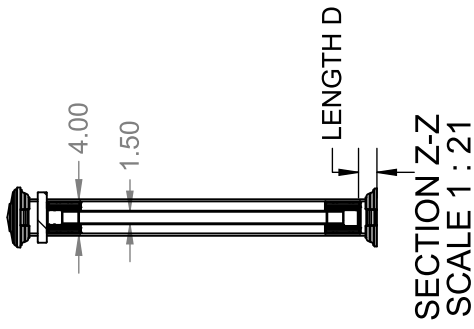
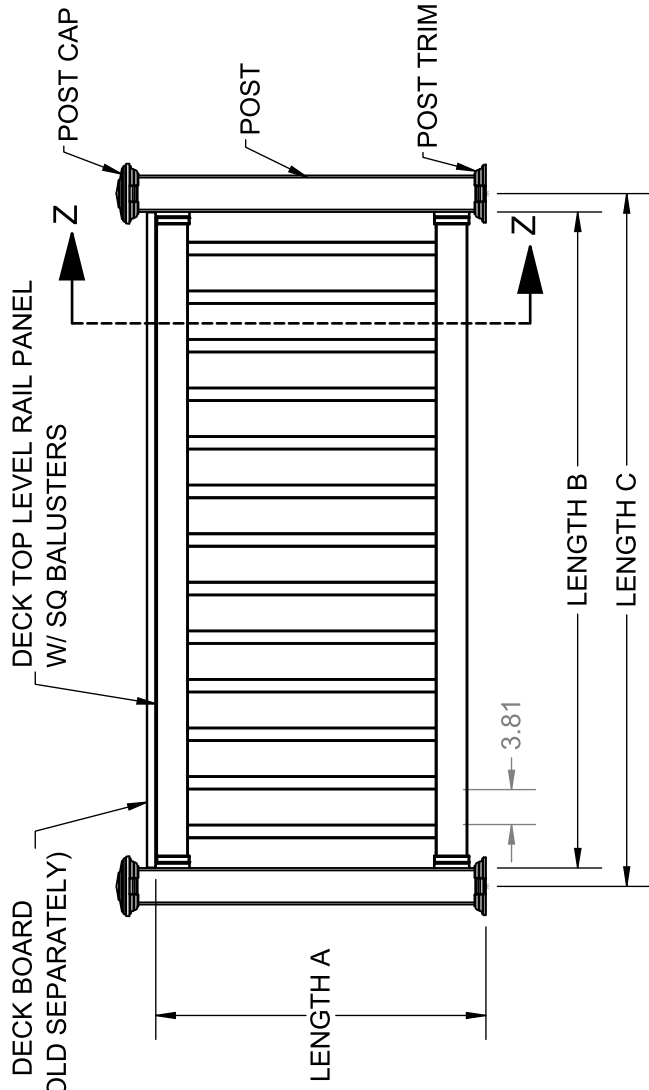
THE INFORMATION CONTAINED IN THIS DRAWING IS PROTECTED BY COPYRIGHT AND PATENT LAWS OF THE UNITED STATES AND OTHER COUNTRIES. ANY REPRODUCTION IN PART OR AS A WHOLE WITHOUT WRITTEN PERMISSION IS PROHIBITED.



BARRETTE
Outdoor Living

DRAWN: RP	DATE: 05/02/2018	APPROVED:
DESCRIPTION: FINYL LINE T-TOP LEVEL AND STAIR RAIL		
SHEET 1 OF 4	REVISION: 0	PART NUMBER
SCALE 1:21		
WEIGHT: N/A		N/A

FINYL LINE DECK TOP LEVEL AND STAIR RAIL DETAILS



NOTE:

- (A) FINISHED RAIL HEIGHT (TOP OF RAIL TO FLOOR) = 36", 42"
- (B) PANEL LENGTH = 47.75", 59.75", 71.75", 95.75", 119.75"
- (C) MAX SPANS = 98.5X36" IRC, 98.5X42" IBC
- (D) BOTTOM SPACE = 2"

THE INFORMATION CONTAINED IN THIS DRAWING IS PROTECTED BY COPYRIGHT AND PATENT LAWS OF THE UNITED STATES AND OTHER COUNTRIES. ANY REPRODUCTION IN PART OR AS A WHOLE WITHOUT WRITTEN PERMISSION IS PROHIBITED.

STAIR KITS HAVE A WORKING RANGE OF 28-38 DEGREES.

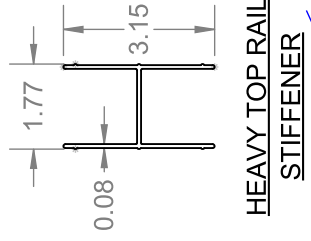
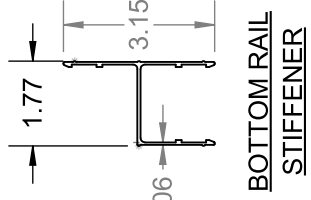
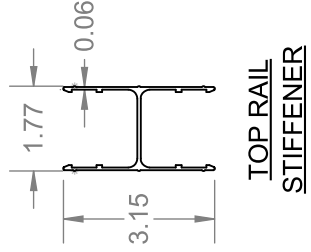
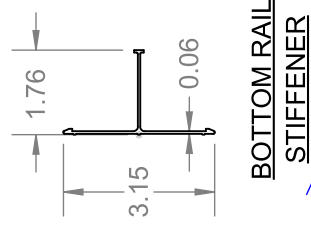
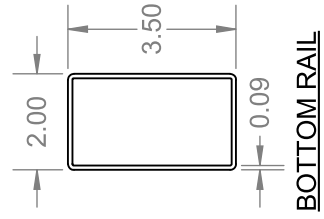
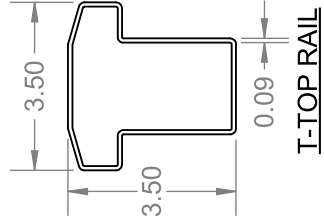
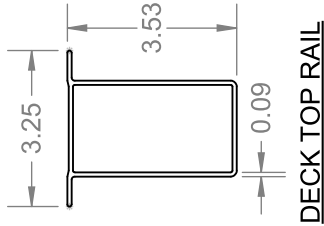


BARRETTE
Outdoor Living

DRAWN: RP	DATE: 05/02/2018	APPROVED:
DESCRIPTION: FINYL LINE DECK TOP LEVEL AND STAIR RAIL		
SHEET 2 OF 4	REVISION: 0	PART NUMBER
SCALE 1:21		
WEIGHT: N/A		N/A

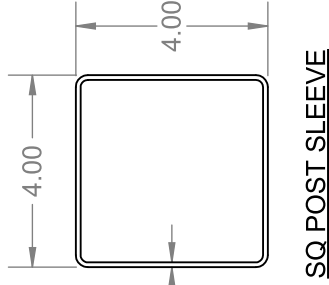
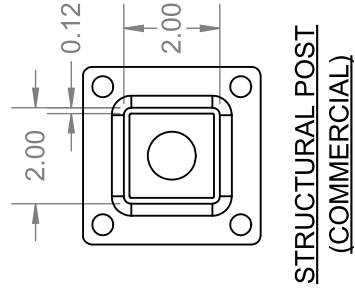
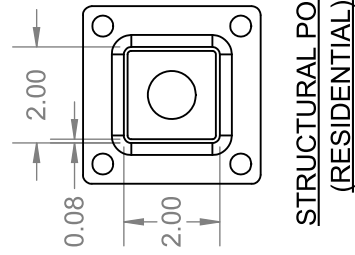
TOP AND BOTTOM RAIL

NOTE: STIFFENER SELECTION DEPENDS ON SPAN OF SELECTION. SEE PFS TECO RESEARCH REPORT 0112

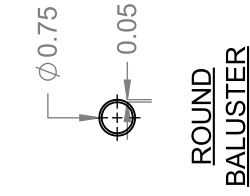
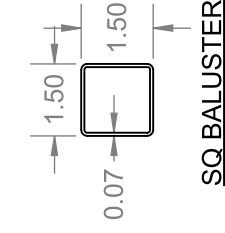
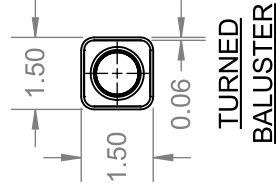


SEE CODE DOC

POST COMPONENTS



BALUSTERS



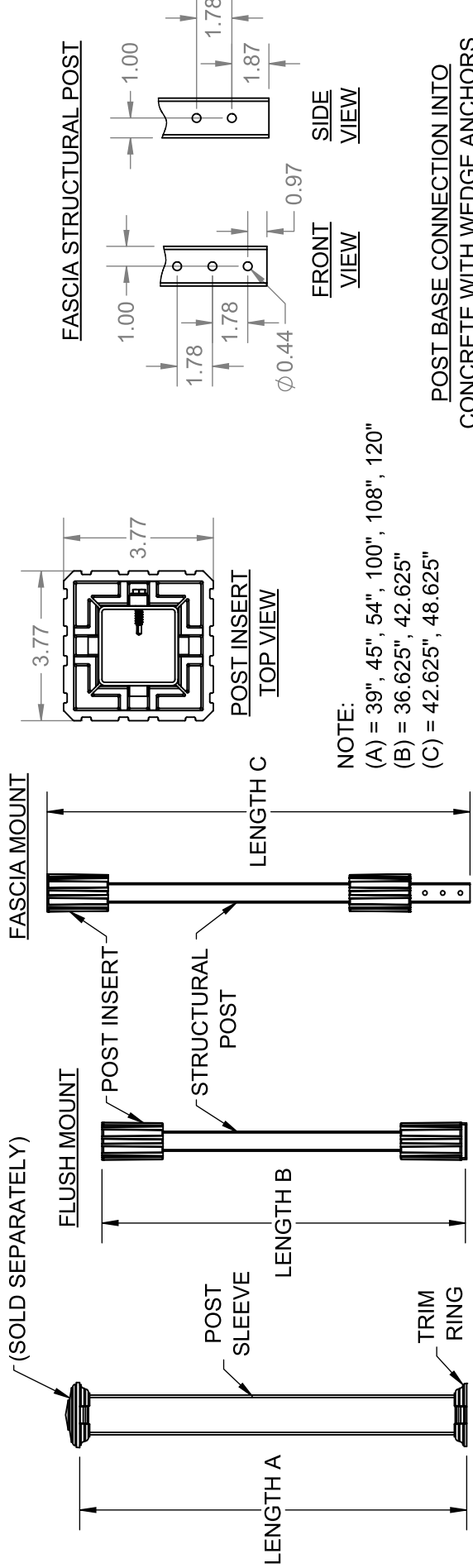
THE INFORMATION CONTAINED IN THIS DRAWING IS PROTECTED BY COPYRIGHT AND PATENT LAWS OF THE UNITED STATES AND OTHER COUNTRIES. ANY REPRODUCTION IN PART OR AS A WHOLE WITHOUT WRITTEN PERMISSION IS PROHIBITED.



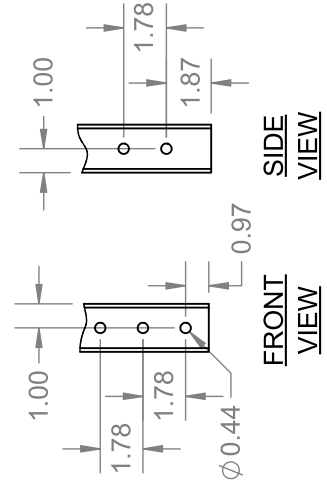
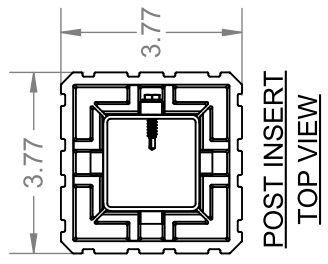
BARRETTE
Outdoor Living

DRAWN: RP	DATE: 05/02/2018	APPROVED:	
DESCRIPTION: FINYL LINE PROFILE DETAILS			
SHEET 3 OF 4		REVISION PART NUMBER	
SCALE 1:4		0	
WEIGHT: N/A		N/A	

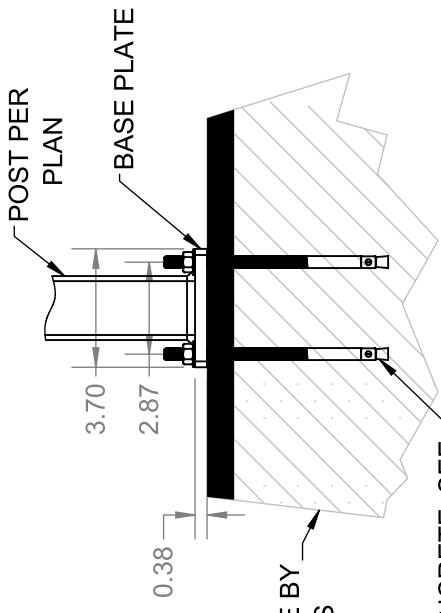
FINYL LINE POST AND MOUNT DETAILS



NOTE:
 (A) = 39", 45", 54", 100", 108", 120"
 (B) = 36.625", 42.625"
 (C) = 42.625", 48.625"

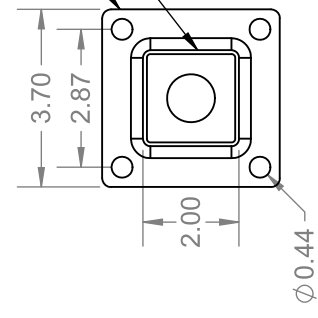


POST BASE CONNECTION INTO CONCRETE WITH WEDGE ANCHORS

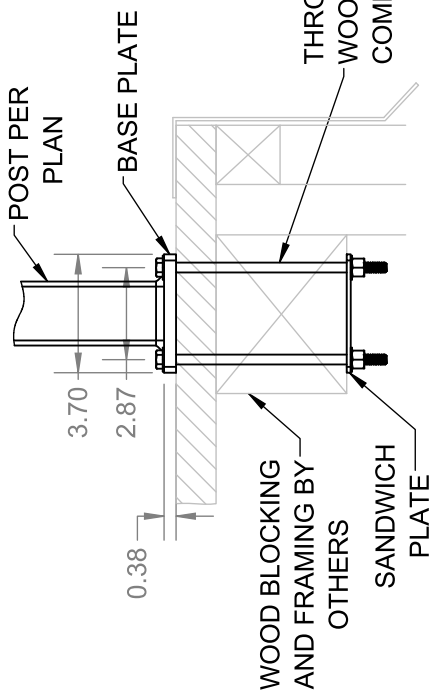


ANCHOR INTO CONCRETE. SEE MANUFACTURER INSTRUCTIONS FOR DETAILS.

POST BASE CONNECTION INTO WOOD WITH THRU BOLT



THROUGH BOLTS INTO SOLID WOOD 3/8" DIAMETER FOR COMMERCIAL APPLICATIONS



NOTE:

1. COMMERCIAL APPLICATIONS ARE ALWAYS BOLTED, USE 3/8" DIAMETER A307 THROUGH BOLTS INTO SOLID WOOD BLOCKING.
2. WOOD BLOCKING BY OTHERS.
3. BLOCKING MUST BE DESIGNED TO WITHSTAND PROPER LOADING.

THE INFORMATION CONTAINED IN THIS DRAWING IS PROTECTED BY COPYRIGHT AND PATENT LAWS OF THE UNITED STATES AND OTHER COUNTRIES. ANY REPRODUCTION IN PART OR AS A WHOLE WITHOUT WRITTEN PERMISSION IS PROHIBITED.



BARRETTE
Outdoor Living

DRAWN: RP	DATE: 05/02/2018	APPROVED:
DESCRIPTION: FINYL LINE POST & MOUNT DETAILS		
SHEET 4 OF 4	REVISION PART NUMBER	
SCALE 1:16	0	
WEIGHT: N/A		N/A