

NEW!

Scotch-Brite™

Match & Finish System



Easy
does it

For fast, consistent
finishing on fabricated
steel parts

3M

The fast, easy way to get right back to where you started

Welding, bending, stamping and other fabrication processes can seriously mar the mill finish of stainless steel and other metals – requiring a lot of time and many tricky, painstaking steps to restore the finish to its original condition.

Now, you have a fast, easy way to bring that finish “right back to where you started” – with the introduction of the new 3M™ Match & Finish System.

**Scotch-Brite™
Match & Finish System**

Game, set, match!



An easy-to-use, integrated system – for a perfect finish, every time!

The heart of the 3M Match & Finish System is a select portfolio of proven Scotch-Brite Flap Brushes, paired with the new 3M™ Match & Finish Sander. When combined with our fast cutting, long-lasting 3M™ Cubitron™ II Discs, Scotch-Brite™ Flap Brushes and other high-performance 3M abrasives, you have a fast, user-friendly system for weld blending and finish restoration on a wide range of metals.

The easy way to match your finish, every time!

- Simplifies finish matching
- Easy screw-on/screw-off attachments
- Easy to control
- Reduces stop/start marks
- Optimal conformability

From weld leveling to final finish in 3 easy steps!

Recommended starting points



NEW! 3M™ Cubitron™ II Fibre Disc 987C
(Grade 60+, 7" diameter)



Alternative Selection
NEW! 3M™ Cubitron™ II Roloc™ Durable Edge Disc 984F
(Grade 60+, 4" diameter)

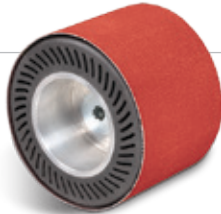
Step 1: Leveling the weld

Level the weld on stainless steel for #3 and #4 finishes with **3M™ Cubitron™ II Discs**.

- Made with 3M precision-shaped ceramic grain, for ultra-fast cut and exceptional life
- Includes a grinding aid for cooler running temperatures

Work hint: Use the finest grade of abrasive that gets the job done; finer grind lines are easier to remove. Align the grind line scratches with the grain line direction of the original stock (perpendicular scratches are more difficult to blend).

Step 2: Setting the grain



3M™ Cubitron™ II Belt 947A
(Grade 120+)

Produce a directional scratch to prepare stainless steel for final finishing with **3M™ Cubitron™ II Belt 947A**.

- Contains 3M precision-shaped ceramic grain with poly-cotton cloth backing
- Includes a grinding aid, which enhances performance on stainless steel and exotic alloys

Recommended: Use with 3M™ Match & Finish tool with 3M™ Expander Wheel (PN 28718) and Adapter Kit (PN 28719)

Work hint: Attempt to stay as close as possible to the weld area to minimize final blending.



Choose the Scotch-Brite™ Match & Finish Flap Brush that's right for your application.

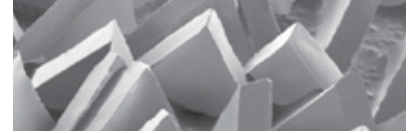
Step 3: Final finishing

Match your finish with **Scotch-Brite™ Match & Finish Flap Brushes**.

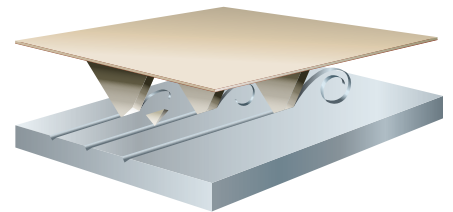
- Easy to control
- Easy-thread on/off attachment
- Conforms to most surface geometries

Work hint: With a little practice, you can "feather" in and out of the repair area. Working with the grain, ease off pressure on both ends of the strokes.

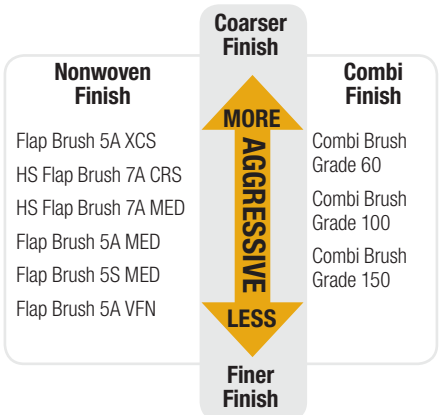
3M Precision-Shaped Grain



The new precision-shaped grain found in 3M™ Cubitron™ II Abrasives combines the advanced material properties of our original ceramic grain with the precise microreplicated structures pioneered in 3M™ Trizact™ Abrasives. As the triangular shaped grain wears, it continuously fractures to form sharp points and edges. The result is a faster and cooler cut that lasts up to 4 times longer than conventional discs.



Scotch-Brite™ Match & Finish Flap Brush Selection Guide



Work hint: Start with HS CRS or HS MED. If the finish doesn't match, then move to a more aggressive or less aggressive grade.

Scotch-Brite™ Brushes

Troubleshooting guide for stainless steel repair

Problem	Solution
Heat or warpage	<ul style="list-style-type: none"> Use coarser grade abrasive Reduce speed Use new abrasive Use harder disc pad
Edge cutting	<ul style="list-style-type: none"> Use softer disc pad Reduce angle of grinder
Disc scratches show through	<ul style="list-style-type: none"> Use finer grade leveling disc Increase speed
Chatter	<ul style="list-style-type: none"> Reduce speed and/or pressure
Flap wheel bounce	<ul style="list-style-type: none"> Reduce speed and/or pressure Use smaller wheel
Multi-finishing wheel bounce	<ul style="list-style-type: none"> Reduce speed Dress wheel to round
Smearing	<ul style="list-style-type: none"> Reduce speed Clean or replace contaminated product
Tool stalling	<ul style="list-style-type: none"> Check for proper air supply at tool Increase torque and/or HP of tool
Streiking on final finish	<ul style="list-style-type: none"> Use hand pad holder

Description	UPC Number 051141-	Part Number	Dimensions	MOS RPM
Flap Brush 5A Extra Coarse	55748-9	55748	4 1/2" x 4" x 5/8 -11	3500
	55730-4	55730	4 1/2" x VARIABLE x 5/8 -11*	
High Strength Flap Brush 7A Coarse	55749-6	55749	4 1/2" x 4" x 5/8 -11	
	55731-1	55731	4 1/2" x VARIABLE x 5/8 -11*	
High Strength Flap Brush 7A Medium	55750-2	55750	4 1/2" x 4" x 5/8 -11	
	55732-8	55732	4 1/2" x VARIABLE x 5/8 -11*	
Flap Brush 5A Medium	55745-8	55745	4 1/2" x 4" x 5/8 -11	
	55727-4	55727	4 1/2" x VARIABLE x 5/8 -11*	
Flap Brush 5S Medium	55747-2	55747	4 1/2" x 4" x 5/8 -11	
	55729-8	55729	4 1/2" x VARIABLE x 5/8 -11*	
Flap Brush 5A Very Fine	55746-5	55746	4 1/2" x 4" x 5/8 -11	
	55728-1	55728	4 1/2" x VARIABLE x 5/8 -11*	
Combi Flap Brush Grade 60	55744-1	55744	4 1/2" x 4" x 5/8 -11	
	55726-7	55726	4 1/2" x VARIABLE x 5/8 -11*	
Combi Flap Brush Grade 100	55742-7	55742	4 1/2" x 4" x 5/8 -11	
	55724-3	55724	4 1/2" x VARIABLE x 5/8 -11*	
Combi Flap Brush Grade 150	55743-4	55743	4 1/2" x 4" x 5/8 -11	
	55725-0	55725	4 1/2" x VARIABLE x 5/8 -11*	

* Also available in 4-way keyway attachments

Tools and Accessories

(See the 3M™ Power Tools, Abrasives and Accessories Catalog (61-5002-8217-5) for more tool options.

Description	UPC Number 051141-	Part Number	Dimensions	MOS RPM
3M™ Match & Finish Sander, 1 HP	28659-4	28659	4" x 5/8 -11 EXT	3500
3M™ Expander Wheels	28718-8	28718	5" x 3 1/2" x 1" Arbor Hole	
3M™ Expander Wheel Adapter Kit	28719-5	28719	1" x 5/8 -11 INT	
Alternate: 3M™ Inline Sander – 1 HP	28339-5	28339	5/8 -11 EXT Shaft	
Alternate: 3M™ Expander Wheel	28348-7	28348	5" x 3 1/2" x 5/8" Arbor Hole	
Alternate: 3M™ Wheel Adapter Kit #3	45038-1	45038	5/8 -11 INT x 5/8 -11 EXT	

Warranty, Limited Remedy, and Disclaimer: Many factors beyond 3M's control and uniquely within user's knowledge and control can affect the use and performance of a 3M product in a particular application. User is solely responsible for evaluating the 3M product and determining whether it is fit for a particular purpose and suitable for user's method of application. Unless an additional warranty is specifically stated on the applicable 3M product packaging or product literature, 3M warrants that each 3M product meets the applicable 3M product specification at the time 3M ships the product. 3M MAKES NO OTHER WARRANTIES OR CONDITIONS, EXPRESS OR IMPLIED, INCLUDING, BUT NOT LIMITED TO, ANY IMPLIED WARRANTY OR CONDITION OF MERCHANTABILITY OR FITNESS FOR A PARTICULAR PURPOSE OR ANY IMPLIED WARRANTY OR CONDITION ARISING OUT OF A COURSE OF DEALING, CUSTOM OR USAGE OF TRADE. If the 3M product does not conform to this warranty, then the sole and exclusive remedy is, at 3M's option, replacement of the 3M product or refund of the purchase price.

Limitation of Liability: Except where prohibited by law, 3M will not be liable for any loss or damage arising from the 3M product, whether direct, indirect, special, incidental or consequential, regardless of the legal theory asserted, including warranty, contract, negligence or strict liability.



Abrasive Systems Division

3M Center, Building 223-6S-03
St. Paul, MN 55144-1000
1-866-279-1235
www.3M.com/abrasives

Please recycle. Printed in USA.
© 3M 2014. All rights reserved.
Issued: 4/14 9869HB
61-5002-8321-5

3M, Cubitron, Roloc, Trizact and Scotch-Brite are trademarks of 3M Company. Used under license by 3M subsidiaries and affiliates