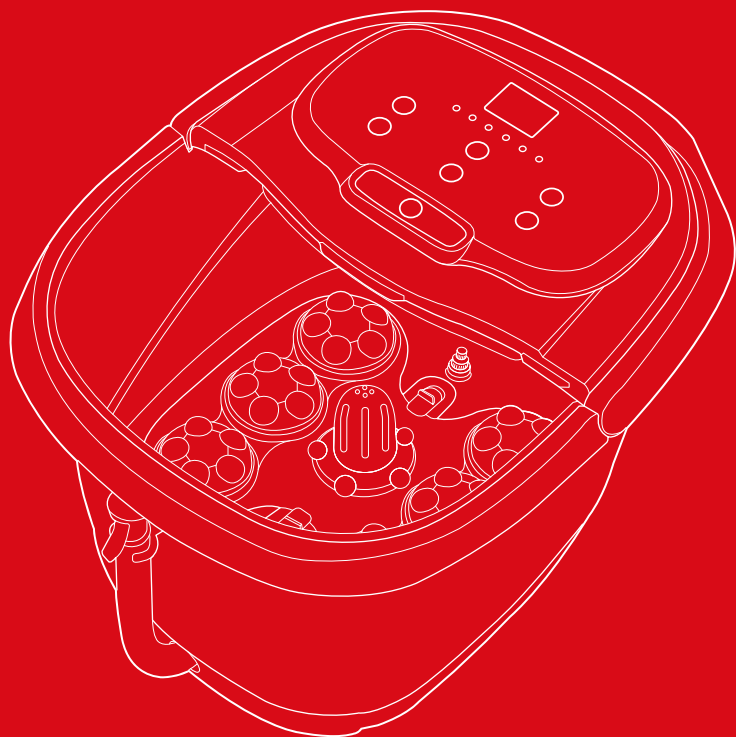




bestchoiceproducts



INSTRUCTION MANUAL

Portable Foot Bath Massager



bestchoiceproducts

As shoppers, we're always trying to find the perfect balance between quality & value. At BCP, we believe we've achieved that. Our diverse catalog of everyday essentials is tailored especially to our customers & guaranteed to hit that sweet spot of high quality & low price.

— Always. —

NOTICE

Please retain these instructions for future reference.

- Only one person may use this product at a time.
- Do not use this product immediately after eating a meal.
- Test the water temperature before use to make sure that it is at a comfortable temperature.
- Please stop if you are feeling uncomfortable (dizziness, headache, etc.).
- If herbal medicine is used during foot bath massage, wrap the medicine in gauze and place it in the medicine compartment.
- Do not add acid, alkaline, or other corrosive additives to the footbath.
- Do not move the machine by dragging it by the power cord.
- Do not pull, twist, or wrap the power cord around the machine.
- Do not use in a wet bathroom or exceedingly wet/humid environment.
- Do not use on carpeted floor.
- Do not allow water to freeze in the machine.
- Product is intended for indoor use only.
- If any parts are missing, broken, damaged, or worn, stop using this item until repairs are made and/or factory replacement parts are installed.
- Do not use this item in a way inconsistent with the manufacturer's instructions as this could void the product warranty.

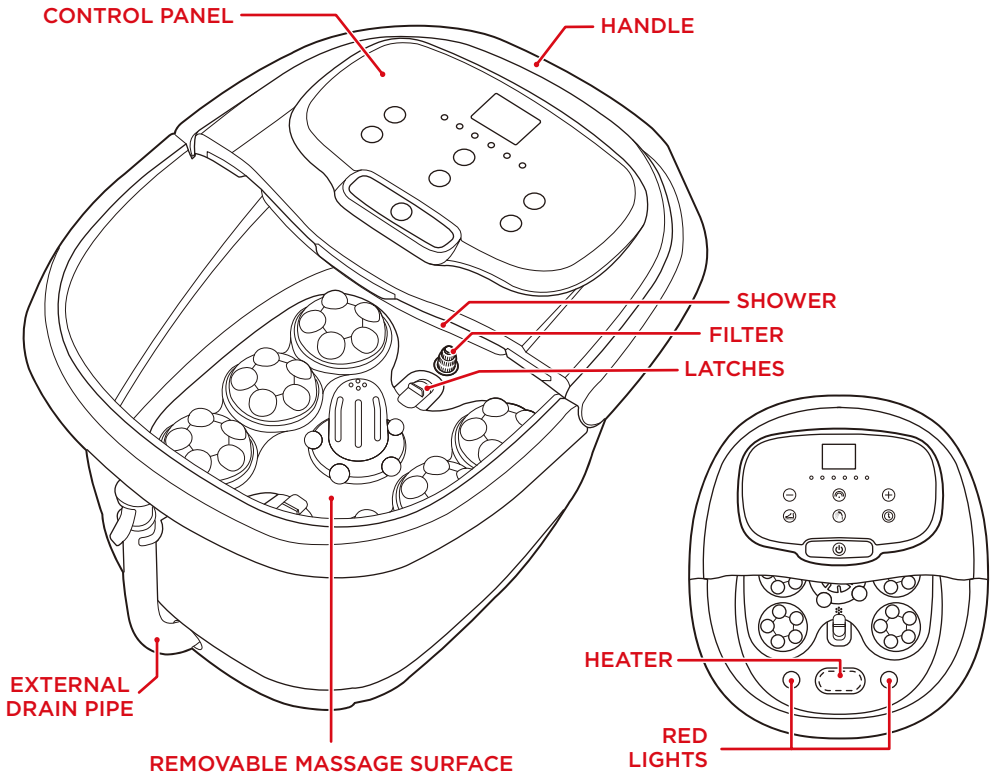
WARNING

- The massager is designed for intermittent use. Only use the massaging function at 15 minute increments, then the motor must be allowed to cool.
- Do not immerse the machine completely in water.
- Do not use if liquid leaks from the machine.
- Do not stand during use or deliberately trample the machine as this may damage the machine and cause electric shock or scalding.
- Do not move the machine during use.
- Do not plug or unplug the machine while feet are in the water.
- Do not use wet hands to pull the plug from the outlet.
- If the power cord or any of the components/parts are damaged, stop use immediately.
- Do not put hot water over 108°F directly into the foot bath massager.
- Do not start the machine without water, otherwise the product may overheat.
- When in use avoid touching anything that can conduct metal, such as a metal chair frame or heating radiator.
- Do not use this machine on an empty stomach, extremely full, or drunk.
- Do not use if you are pregnant.
- People insensitive to temperature, children, or disabled individuals must be monitored during use.
- If you are receiving medical treatment or are in any one of the following situations, consult a doctor and use with caution:

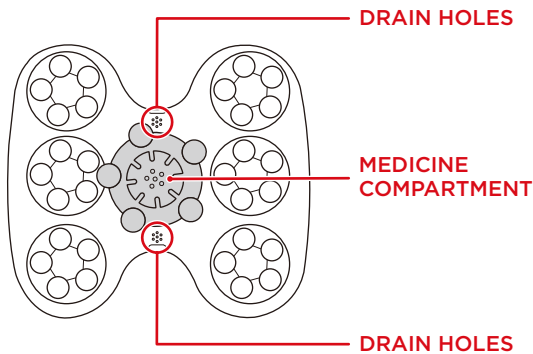
People suffering from diabetes, severe hypertension, stroke, not sensitive to temperature, liver disease, foot abscess or trauma such as skin damage, furuncles, tumor, skin diseases, infectious disease, lymphadenitis, blood disease, early fracture or dislocation, use a pacemaker, or have an artificial limb or metal in a lower extremity.

DIAGRAM

POWER: 120V / 60 Hz, 500 watts

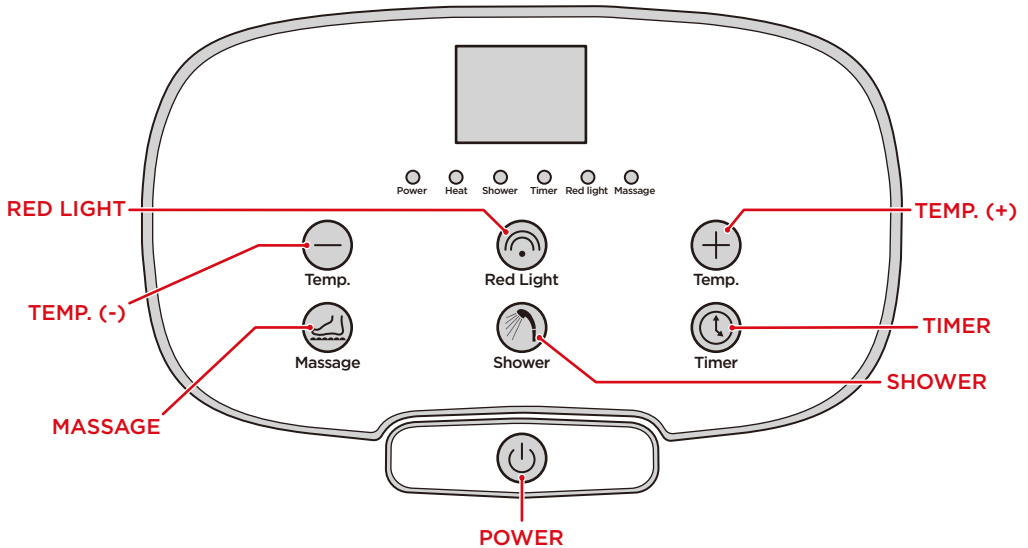


REMOVABLE MASSAGE SURFACE



- Use the latches to remove/insert the massage surface
- Place medicine or herbs in the medicine compartment to customize your foot bath massage

CONTROL PANEL FUNCTIONS



POWER: Press to turn machine on and off. When turned on, the machine will automatically begin to heat the water. The power and heat indicator lights will turn on.

TEMP + / - : Press to increase/decrease temperature at one-degree increments.

RED LIGHT: Press to toggle the red light on and off.

MASSAGE: Press to toggle the massage function on and off.

SHOWER: Press to toggle the shower function on and off. Use this to test water temperature.

TIMER: Press to show the current time. Continue pressing to set the timer anywhere from 10 minutes to 60 minutes.

OPERATING INSTRUCTIONS

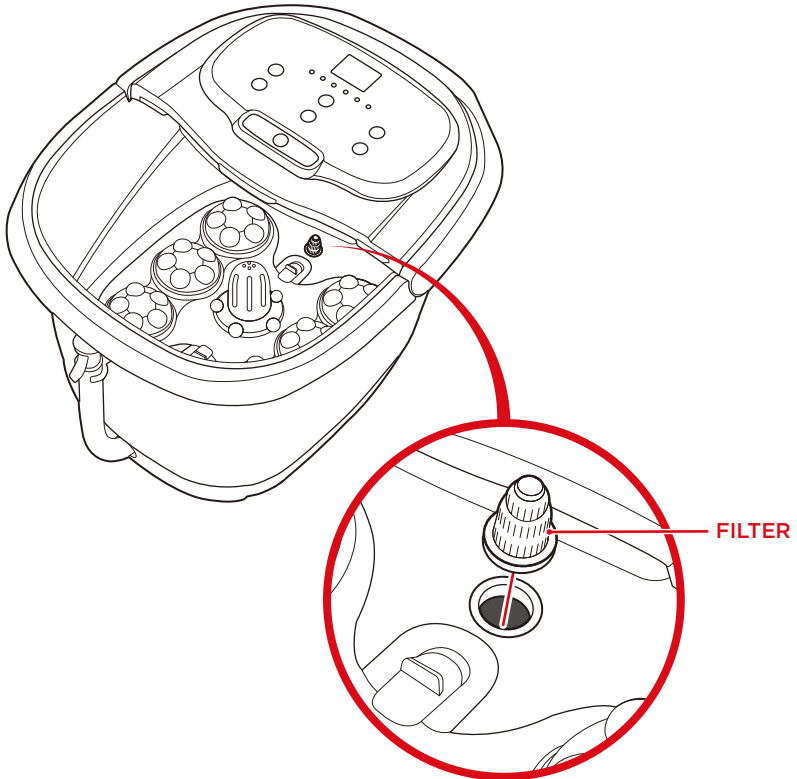
1. Place machine on level surface. Ensure that the massager is unplugged before filling with water.
2. Add clean water directly to the basin. Make sure you do not go beyond the max water line.
3. Plug the machine in and turn it on. Set the water temperature and wait until the water reaches your desired temperature. Use the shower function to test the water temperature.
4. Sit down on a chair or a similar sturdy surface and place your feet in the basin.
5. Select your foot bath or massage settings.

FOOT SPA MASSAGER TIPS

- The massager is designed for intermittent use. Only use the massaging function at 15 minute increments, then the motor must be allowed to cool.
- Regular foot baths and massages will greatly improve blood circulation.
- Use the shower function to test the temperature of the water before putting your feet in the bath.
- Be aware that during a foot bath massage your pores will open, so do not use while sitting directly in front of a fan or air conditioner to avoid getting a cold.
- It is recommended that you drink a cup of water before use.
- It is recommended to use this product one hour before or after a meal.
- Do not stand up immediately after a foot bath massage; rest 2 to 3 minutes before standing up and walking.

CLEANING FILTER

- Regularly remove and clean detachable filter.
- Dirt and debris can block filter and cause shower function to malfunction..



CLEANING AND STORAGE

- Remove water by draining water through the external drain pipe or carefully pouring it from the basin.
- Prevent water from splashing on the control panel or it may damage the components.
- Turn the machine off and unplug it after every use.
- Wipe clean accumulated dirt from the inside of the basin.
- Use the latches to remove the massage surface to clean it.
- Only clean this product with soap and water. Do not use abrasive chemicals as it may damage the machine.
- Do not store this product upside down or by hanging.
- Store upright in a cool and ventilated place.

TROUBLESHOOTING

| Problem | Reason | Solution |
|--------------------------------|----------------------|---|
| Water is heavy or dirty | Incrustation | Soak the basin in oxalic acid or white vinegar for 10 minutes |
| Heat not working | No power | Make sure the machine is properly plugged in and turned on |
| Not working or stopped working | Not turned on | Turn on |
| | Foot bath time is up | Add time or restart foot bath |



HELP CENTER



Question about your product? We're here to help. Visit us at:

help.bestchoiceproducts.com



Chat Support



Product Inquiry



Orders FAQ



Product Assembly



Returns & Refunds

PRODUCT WARRANTY INFORMATION

All items can be returned for any reason within 60 days of the receipt and will receive a full refund as long as the item is returned in its original product packaging and all accessories from its original shipment are included. All returned items will receive a full refund back to the original payment method. All returned items will not be charged a re-stocking fee.

All returned items require an RA (Return Authorization) number, which can only be provided by a Best Choice Products Customer Service Representative when the return request is submitted. Items received without an RA may not be accepted or may increase your return processing time. Once an item has been received by Best Choice Products, refunds or replacements will be processed within 5 business days.

All returns must be shipped back to the Best Choice Products Return Center at the customer's expense. If the reason for return is a result of an error by Best Choice Products then Best Choice Products will provide a pre-paid shipping label via email. Boxes for return shipping will not be provided by Best Choice Products, and is the customer's responsibility to either use the original shipping boxes or purchase new boxes.

Pictures may be required for some returns to ensure an item is not damaged prior to its return. Items returned are not considered undamaged until they are received by Best Choice Products and verified as such. All damages to items are the customer's responsibility until the item has been received by and acknowledge by Best Choice Products as undamaged.



WARNING

Manufacturer and seller expressly disclaim any and all liability for personal injury, property damage or loss, whether direct, indirect, or incidental, resulting from the incorrect attachment, improper use, inadequate maintenance, or neglect of this product.