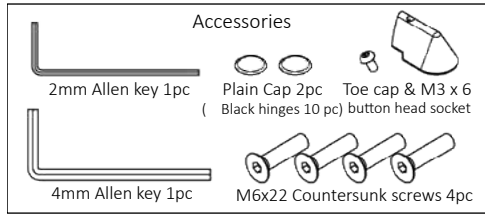


# GLASSWAREHOUSE

## NAL-HH180

SURF Glass to glass soft close hinge  
 Suitable for 12mm hinge panel & 8mm-12mm gate panel

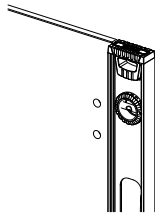


### Installation

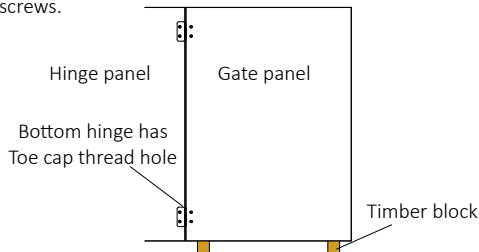
1. Check that the alignment of the glass hinge panel is plumb.



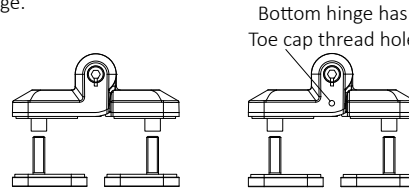
Watch the install video



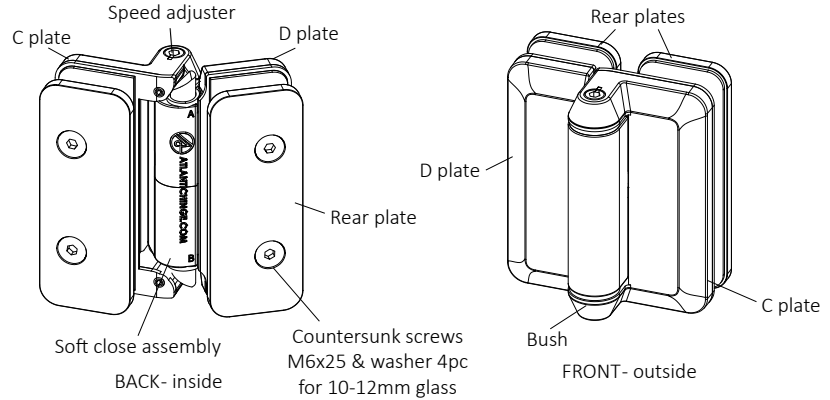
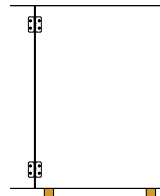
4. Rest the gate panel on blocks and position it level and aligned with the hinge panel. Make sure the hinges are plum and aligned then tighten the hinge panel side screws.



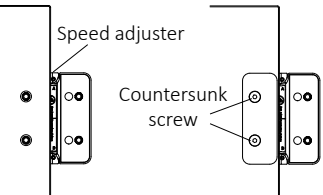
2. Undo the Countersunk screws completely, then take the rear plates off. Repeat the process for the second hinge.



5. 10mm to 12mm thick Gate panels use the M6x25 countersunk screws & washers to secure the rear plates. 8mm thick gate panels use the M6x22 countersunk screws & washers. Once screws tight, remove the blocks and test carefully. Refer to speed adjustment if needed.



3. With the Speed adjuster facing up lightly secure the rear plate on the hinge panel side for both hinges with the M6x25 countersunk screws & washers.



6. If the distance between the top surfaces of both hinges is over 900mm and the gap between the hinge panel and gate panel is 10mm or less then push the plain caps on both hinges. If not use the toe cap on the bottom hinge and the plain cap on the top hinge.

