

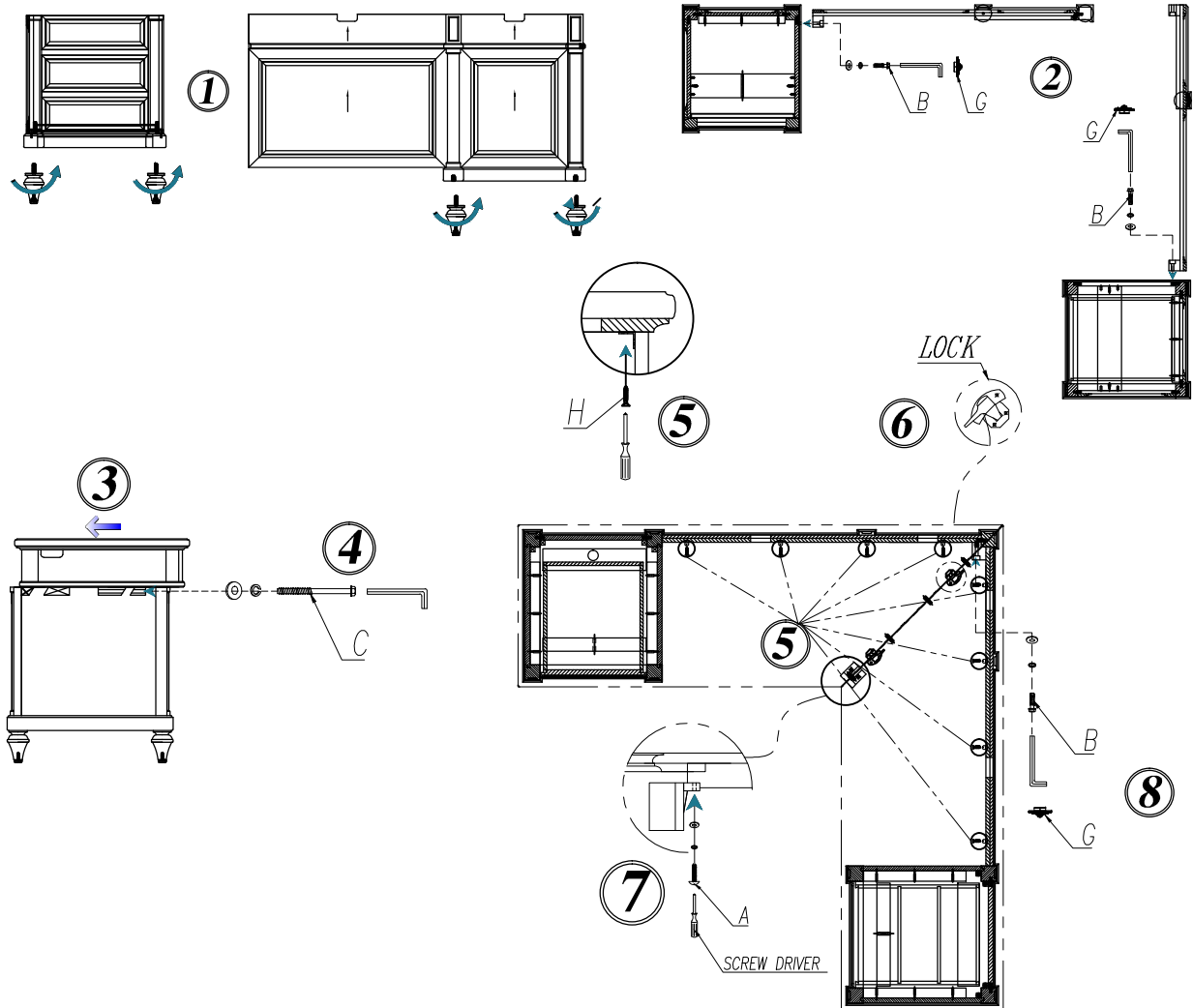
HEKMAN

X A HOWARD MILLER COMPANY

ASSEMBLY INSTRUCTIONS

7-9107 L - DESK

NO.	Hardware List	Qty
A	Bolt 5/16" x 2-3/8"	1
B	Bolt 5/16" x 2-3/8" L	9
C	Bolt 5/16" x 5-7/8" L	2
D	Lock Washer 5/16" Dia	12
E	Flat Washer 5/16" Dia	12
F	Wrench 3/16" Dia 4-3/4" L	1
G	Bolt Cover Caps	9
H	Screw	8



1. Place left and right pedestals on their back on a soft clean surface to prevent scratching. Turn the bun feet in and tighten by hand.
2. Place the modesty panels on a soft clean surface to prevent scratching. Turn the bun feet in and tighten by hand.
3. Assemble left pedestal and left modesty panel with flat washer (E), lock washer (D), and bolt (B). Get all the bolts started but do not tighten until later in the assembly process.
4. Assemble right pedestal and right modesty panel with flat washer (E), lock washer (D), and bolt (B). Get all the bolts started but do not tighten until later in the assembly process.
5. Place the left top assembly on the left pedestal/modesty panel assembly. As shown in figure (3) start with the top assembly forward on the pedestal and slide to the back into place to lock the French cleats.
6. Open the drawer at the top of the left pedestal and secure the two assemblies with bolt (C), lock washer (D), and bolt (B) using wrench (F).
7. Place the right top assembly on the right pedestal/modesty panel assembly. As shown in figure (3) start with the top assembly forward on the pedestal and slide to the back into place to lock the French cleats.
8. Open the drawer at the top of the right pedestal and secure the two assemblies with bolt (C), lock washer (D), and bolt (B) using wrench (F).
9. Attach left modesty panel to left top assembly and right modesty panel to right top assembly with screw (H) as shown in figure (5).
10. Tighten bolts holding right pedestal to right modesty panel and left pedestal to left modesty panel using wrench (F), and cover with bolt cover caps (G).
11. Place the right and left assemblies in the intended final location. The desk cannot be moved after the right and left assemblies are attached.
12. Lock the top panel locks underneath the top panels as shown in figure (6).
13. Attach the wood block between the drop front drawers with flat washer (E), lock washer (D), bolt (A) using a screw driver as shown in figure (7).
14. Attach right and left modesty panels with bolt (A), lock washer (D), flat washer (E), with wrench (F).