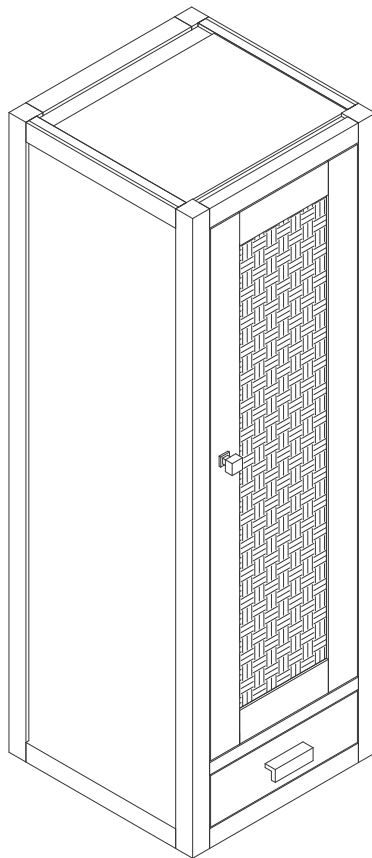


15"X12" ADDISON PETITE TOWER HUTCH-RIGHT

E444-H12R-GW

JAMES MARTIN
VANITIES



Features and Materials

Solids: Yellow Poplar

Panels: MDF

Installation Type: Floor Standing with Wooden Stand (E444-ST12-GW); or Coordinate with Base Cabinet(E444-BC15-GW) & Countertop Unit(E444-CU30-GW) or Wall Mounted

Number of Doors: One

Number of Drawers: One

Assembly Type: Attach to Wall for wall mount or base for freestanding (hardware included)

Door Panel: Reversible. One Side Finished in Glossy White, One Side Natural Cork (Pattern: Casablanca)

Drawer Box Material and Construction: 15mm Poplar/English Dovetail Joinery

Hardware Material and Finish: Zinc Alloy in Polished Chrome

Full Extension, Soft Close Glides

European Soft Close Hinges

Aluminum Laminate Drawer Liners

Dimension

Width: 14-7/8"

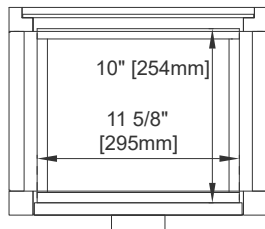
Depth: 11-7/8"

Height: 45"

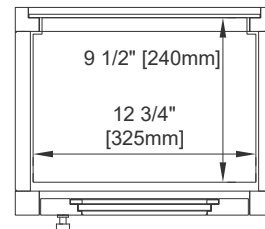
15"X12" ADDISON PETITE TOWER HUTCH-RIGHT

E444-H12R-GW

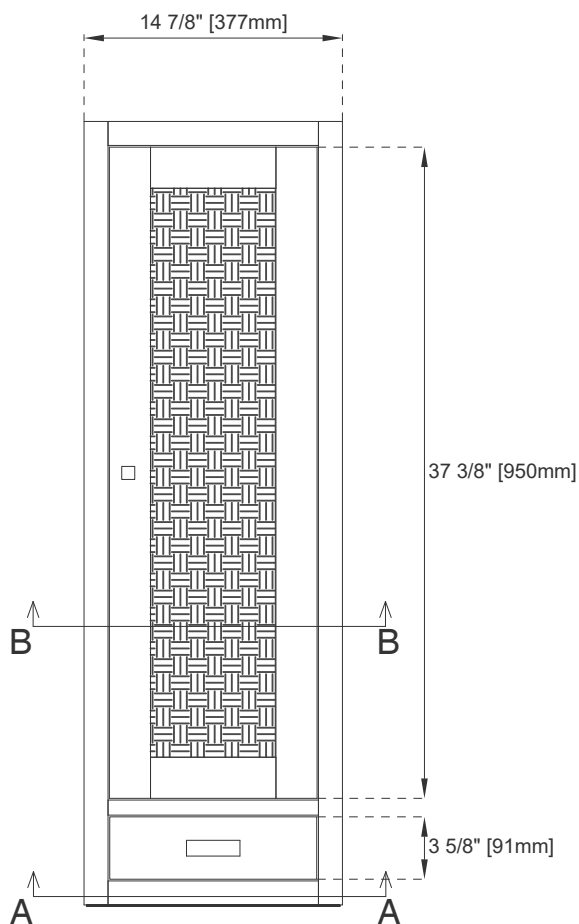
JAMES MARTIN
VANITIES



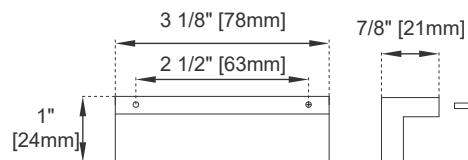
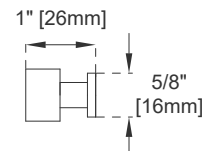
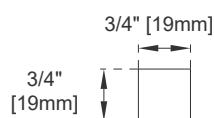
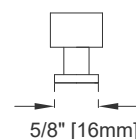
Top View 1
Section A-A



Top View 2
Section B-B



Front View



Knob

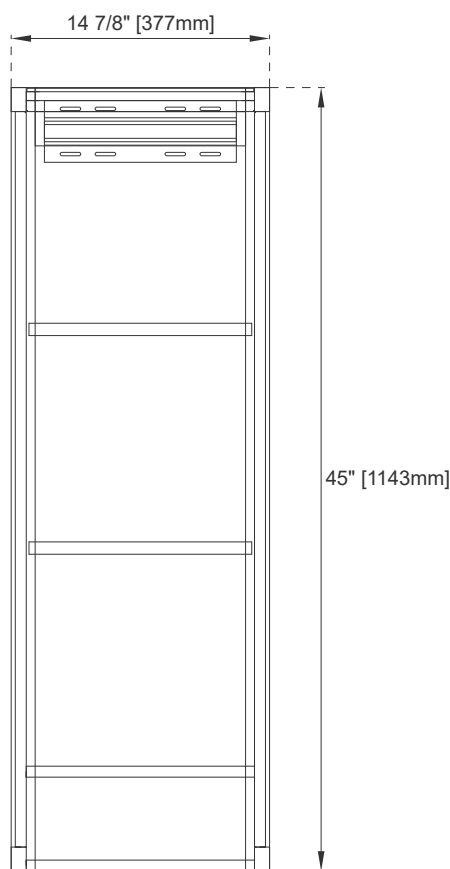
All dimensions are nominal

Visit website for warranty and installation information
www.jamesmartinvanities.com

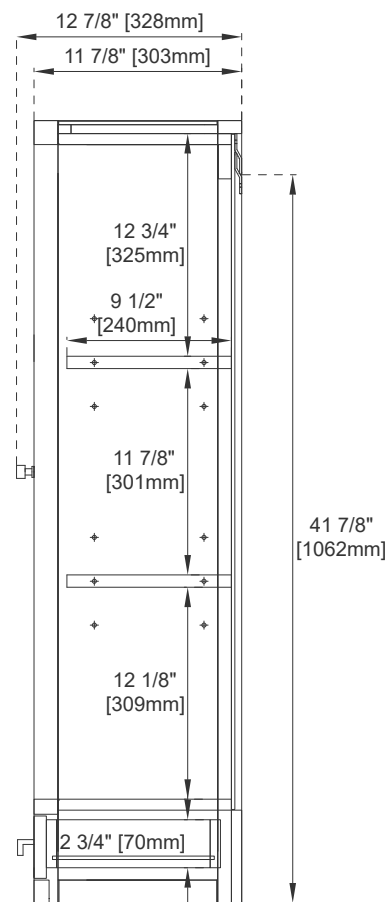
15"X12" ADDISON PETITE TOWER HUTCH-RIGHT

E444-H12R-GW

JAMES MARTIN
VANITIES



Back View



Side View

All dimensions are nominal

Visit website for warranty and installation information
www.jamesmartinvanities.com