

EVERY THING YOU NEED TO KNOW ABOUT YOUR



LIFESTYLE REFRIGERATION

MODELS: XOU2470BCG_
XOU2470WDZG_
XOU2470WG_

I worked really hard
on this manual -
so please read it...





WARNING

State of California Proposition 65 Warning:

This product contains one or more chemicals known to the State of California to cause cancer, birth defects or other reproductive harm.



When buying any XO appliance,
you can be confident you have chosen a
high quality, innovative and stylish product
from a company that cares about you!

If you require service or have questions,
there are 2 ways to contact our appliance experts;

Online @ <https://xoappliance.com/priority-service-for-your-xo-product/>

Or by phone 973-403-8900



CONGRATULATIONS

on purchasing your XO.
Before you proceed, take just a
moment to register your XO at:

www.xoappliance.com/register-your-product/

Or simply scan here to be taken
to the registration page...



REGISTRATION HELPS YOU BY -

Ensuring warranty coverage should you need service
Providing ownership verification for insurance purposes
XO can notify you in the event of product changes or recalls.

WHERE THINGS ARE

Before You Get Started

5 - 8

Installer Checklist
Find Your Model
Safety Instructions
Electrical and Grounding Instructions

Installation Instructions

9 - 15

Sizes and Installation Dimensions
Reversing the Door
Leveling Your XO
Door Handle Installation
Anti-Tip Bracket

Operating Instructions

16 - 23

Control System Overview
Setting the Temperature
Functions
Wine and Beverage Storage
Shelf Instructions

Care and Cleaning

24 - 25

Helpful Hints
Cleaning the Interior / Exterior
Changing the Carbon Air Purification Filter

FAQ's

26 - 28

Before You Call For Service
Warranty

**PLEASE READ AND FOLLOW
ALL SAFETY INSTRUCTIONS**

It's for your
own good...
Honest.

XO

DEAR INSTALLER THE JOB ISN'T DONE UNTIL

To ensure that the installation process is successfully completed, here are few things to review...

- ☐ Is the unit plugged in?
- ☐ Are the controls on? (Panel will illuminate.)
- ☐ Are the controls operating correctly?
- ☐ Has the unit been properly leveled - both side to side and front to back - with all 4 leveling feet securely making contact with the floor?
- ☐ After installation, does the door open sufficiently to fully extend the shelves?
- ☐ Is the door sealing properly?
- ☐ Is the handle secure?
- ☐ Have you thoroughly inspected the surfaces for any imperfections?
- ☐ Have you reviewed this manual with the customer and explained the unit's operation and care?
- ☐ Has the customer received copies of the literature and keys?
- ☐ Have you properly disposed of all packing materials properly (recycle, please)?
- ☐ Is the customer satisfied?

DANGER

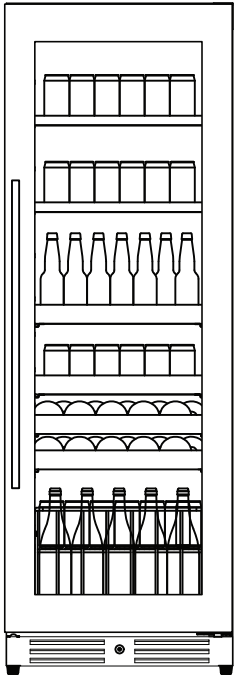
RISK OF CHILD ENTRAPMENT!

An empty refrigerator is a very dangerous attraction to children.

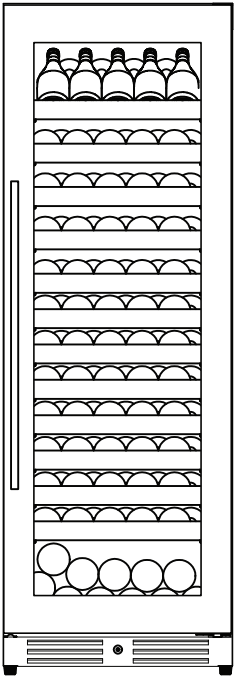
Remove door gaskets, latches, lids, lock and/or doors from unused or discarded appliances, or take other actions to guarantee them harmless.

Always dispose of old appliances in accordance with local laws and regulations.

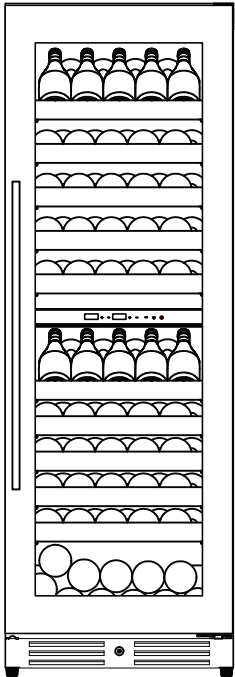
THESE ARE THE MODELS COVERED IN THIS BOOK



XOU2470BCGS
XOU2470BCGB



XOU2470WGS
XOU2470WGB



XOU2470WDZGS
XOU2470WDZGB

TAKE A MINUTE TO CIRCLE YOUR MODEL ABOVE
AND RECORD YOUR SERIAL NUMBER
HERE IN CASE YOU NEED IT LATER



YOUR SAFETY MATTERS

Please read through completely before using your XO Unit

To prevent damage to the door gasket, the door must be opened all the way before pulling shelves out.

The appliance must be positioned so that the plug is accessible.

Empty your XO unit before attempting to move the appliance. Moving while loaded may damage or distort the frame.

The compressor will get HOT during operation / touching it may cause injury.

During installation follow all safety tips provided in this manual / appropriate safety equipment such as safety glasses and work gloves should be worn.

Two people should move or lift your XO unit to prevent injury or damage.

Remove all interior and exterior packing materials prior to installation and dispose of properly.

Never cover the bottle racks with foil or other material which will impede internal air circulation.

For maximum efficiency, keep the door tightly shut unless loading or unloading and never overload your XO unit.

Before installing, allow your XO unit to sit upright for 2 hours at the install site. This will allow the cooling system to stabilize after transportation. Failure to follow this step may cause problems.

Never store perishable food products such as meat or cheese in your wine cooler or beverage center.

Location

Your XO unit should be located away from direct sunlight and heat sources (stove, heaters, etc.) which may increase electrical consumption. High or low ambient temperature may cause units to work improperly.

The floor must be strong enough to support your XO unit fully loaded.

Your XO unit must not be installed in areas of where water or excessive moisture are present.

Your XO unit must not be installed near where flammable, corrosive or hazardous materials are present.

Your XO unit's final installation must observe the correct minimum air clearances around and behind the unit to ensure adequate ventilation. In addition, all ventilation openings must be kept clear and free of obstructions, failure to do so will result in damage to the unit.

WARNING

NEVER use external heat sources to accelerate defrosting

NEVER permit unauthorized service or modifications to your XO unit

NEVER tamper with the sealed refrigerant system - this unit uses R600A Refrigerant which is flammable.

It should never be used in the vicinity of any flammable or explosive ignition sources.

ALWAYS FOLLOW THE ELECTRICAL SAFETY INSTRUCTIONS OUTLINED IN THIS MANUAL.

ELECTRICITY - THIS IS SERIOUS

Failure To Follow All Electrical Safety Measures May Result in Serious Injury, Fire Or Death

All electrical work should only be performed by an experienced, licensed electrician.

All XO units **MUST** be grounded for safe operation and come equipped with a 3 Prong molded cord/plug for that purpose.

NEVER remove or disable the 3rd prong with an adapter.



NEVER use an extension cord to operate your XO unit.



Your XO unit is built to operate on 115V 60Hz and should be plugged directly into a dedicated 15 amp 3 prong outlet. If you are uncertain as to the voltage, amperage capacity or if the 3rd prong is properly grounded - consult a licensed electrician.

To maximize the depth of the installation recess - your outlet should be mounted flush with the wall.

Your XO unit should not share the circuit with any other electrical devices as this may cause overloading, overheating, blown fuses or tripping circuit breakers. In a worst case this can pose a fire hazard.

NEVER handle your XO unit in wet conditions as this can pose a severe danger of electric shock.

Exercise care when moving your XO unit to avoid damage to the electrical cord. If the electrical cord of your XO unit becomes worn or damaged it must be replaced immediately by a qualified technician.

NEVER unplug your unit by pulling on the cord. Unplug by gripping the plug firmly and pull out straight from the outlet.

INDOOR USE ONLY:

XO Refrigerators, wine cellars and beverage centers described in this manual are rated for indoor use only.

Your XO Unit was designed to operate in a room temperature ambient condition between 60°F and 90°F.

Use in any area which is not temperature controlled within that range, such as a garage or porch may cause your XO unit to fail to function properly. Use in any uncontrolled area or otherwise exposed to the elements is hazardous and voids the warranty.

For outdoor installations - consult XO or your local XO dealer regarding an outdoor rated model.

In regions where high humidity exists condensation may appear on the glass and/or gasket seals. For best operation, keeping the unit fully stocked with product will reduce this.

SERVICE	115V - 60 Hz - 1 phase
AMPS	15 Amp Circuit Breaker

Requires a Dedicated Outlet

All electrical work must be performed by a licensed electrician

Serious injury, fire or death...

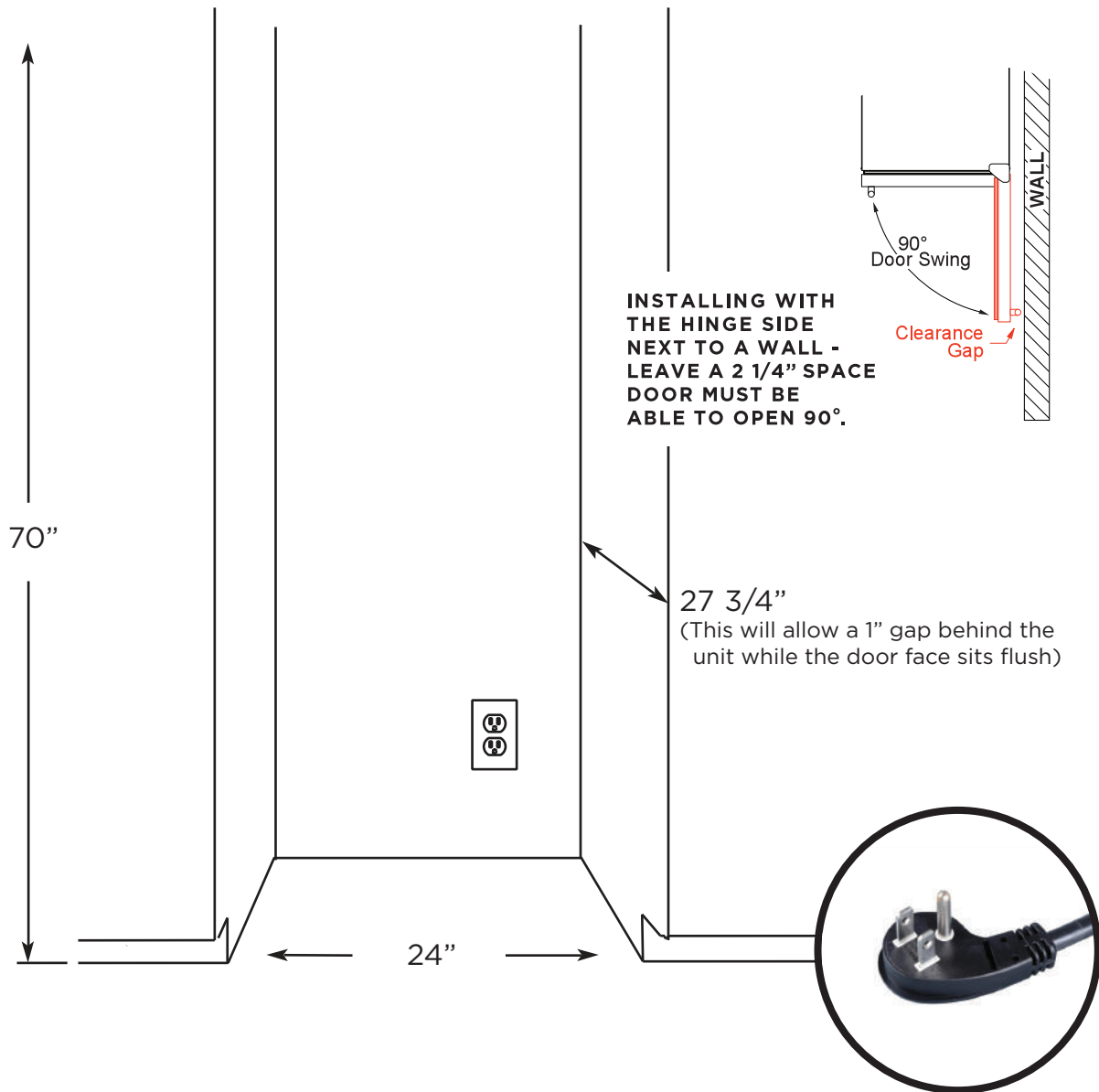
Okay -

You've got my attention!

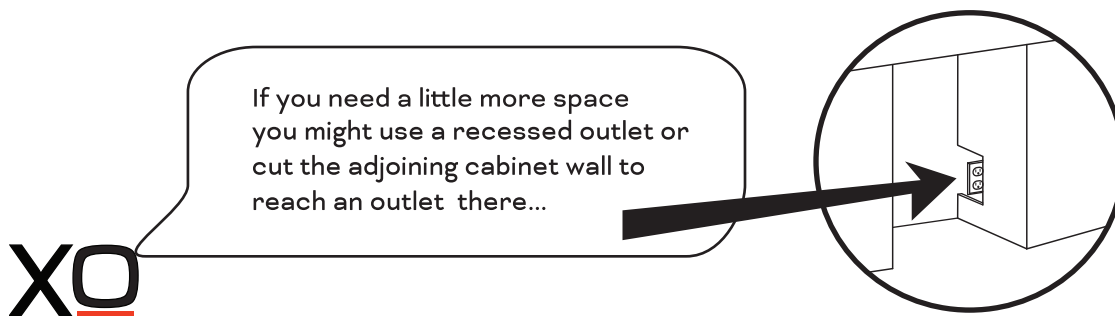
XO

A PERFECT FIT

USE FREE STANDING - OR - BUILT-IN



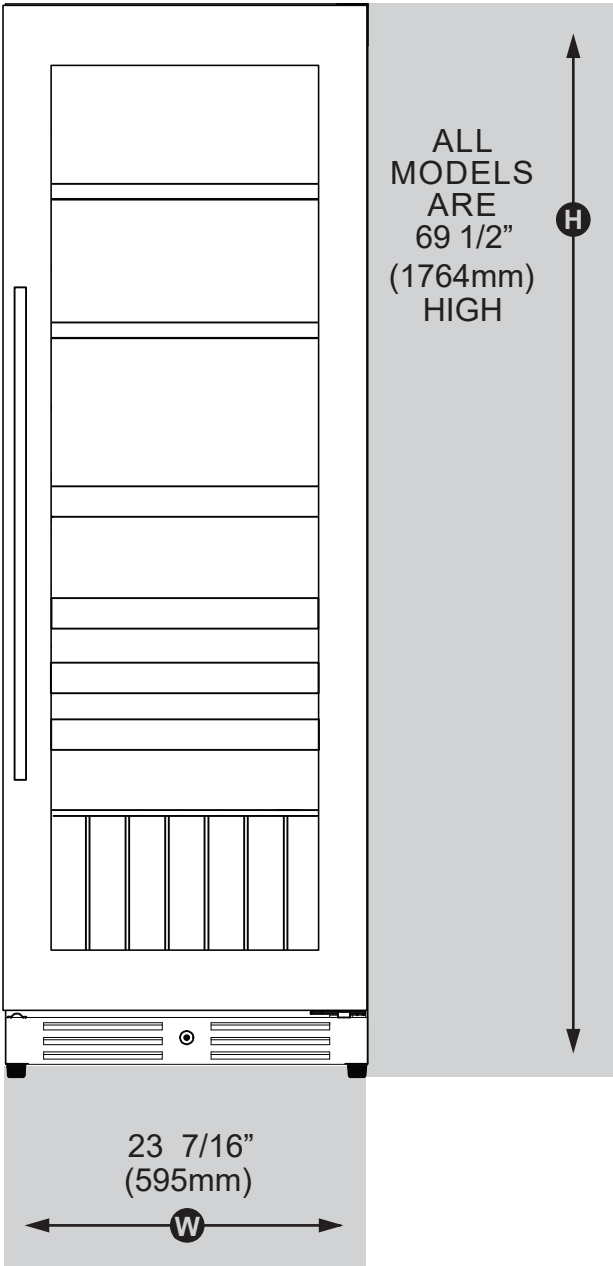
IF THE DOOR CAN'T OPEN FULLY - YOU CAN'T PULL THE SHELVES OUT.



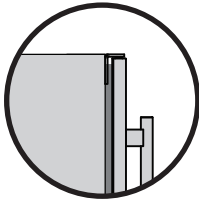
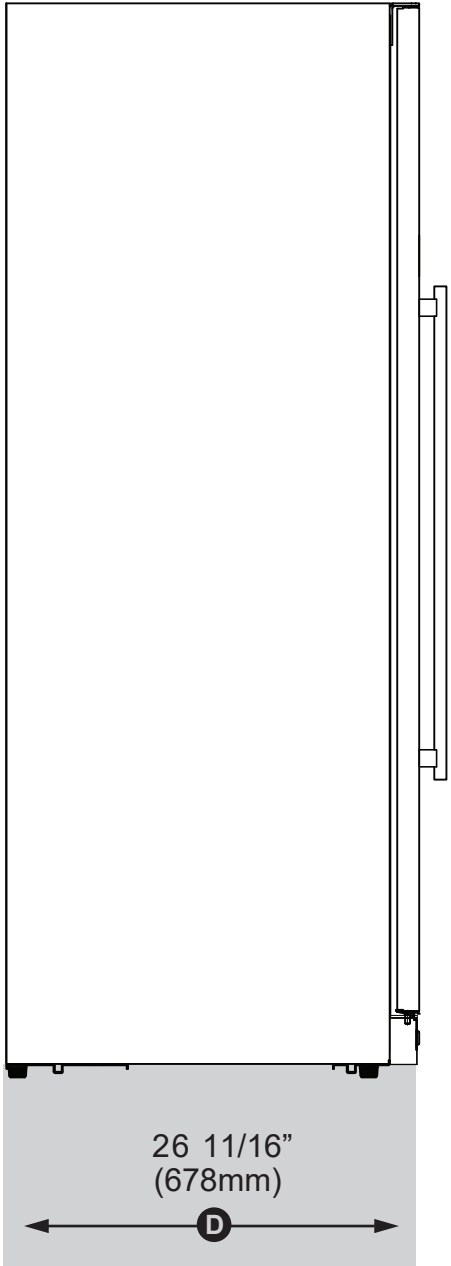
A PERFECT FIT

YOUR XO IS THIS BIG

HEIGHT & WIDTH



DEPTH

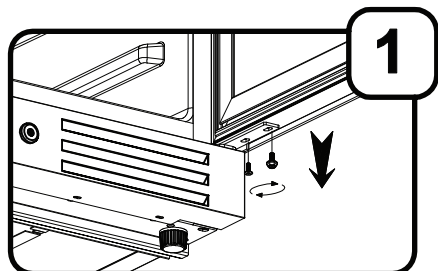


THE DEPTH IS SHOWN WITHOUT HANDLES
HANDLE WILL ADD 1 3/4" TO THE DEPTH

REVERSING THE DOOR

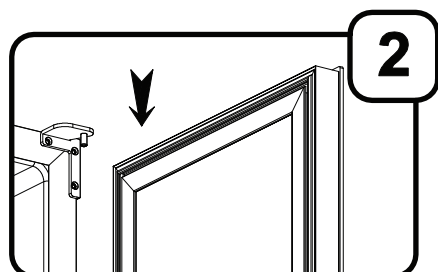
WARNING: Do not attempt to reverse the door alone. This operation requires at least two people to be performed safely. The door is large, heavy and fragile.

READ THESE INSTRUCTIONS COMPLETELY BEFORE BEGINNING - IF YOU ARE UNSURE ABOUT PROCEEDING, STOP AND CALL FOR SERVICE.



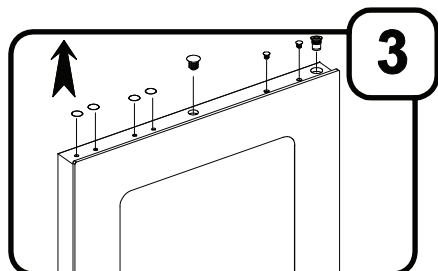
BEFORE BEGINNING - REMOVE ALL INTERIOR SHELVES, RACKS AND BINS - THEN LAY THE UNIT FLAT ON ITS BACK. TEAM LIFT - TWO OR MORE PEOPLE ARE REQUIRED!

Step 1: Remove the screws attaching the lower hinge to the bottom of the door from below.

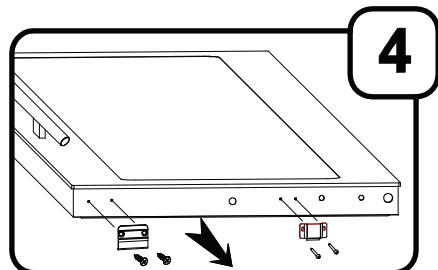


Step 2: Swing the bottom hinge out of the way and carefully slide the door free from the top hinge pin.

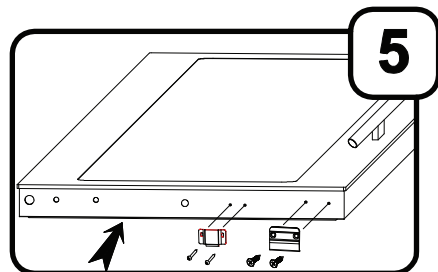
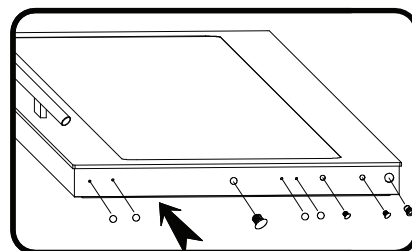
CAUTION: DO NOT USE THE DOOR HANDLE TO LIFT OR HOLD THE DOOR. GRIP BY THE EDGES ONLY.



Step 3: Lay the door on a secure, flat, padded, working surface. **USE CARE NOT TO DAMAGE THE FINISH OR DOOR GASKET** Remove and save the plugs, stickers and hardware from the top of the door.



Step 4: Remove the hardware from the bottom of the door and replace it with the parts removed in **Step 3**.

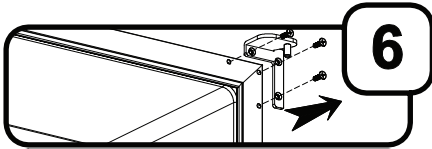


Step 5: Reinstall the hardware from the bottom of the door removed in **Step 4** in the holes provided in what had previously been the top of the door.

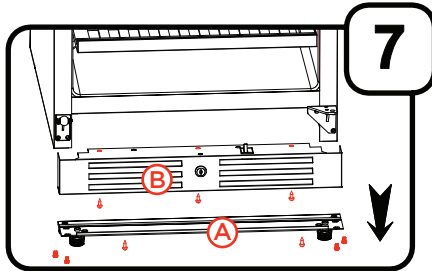
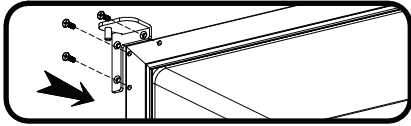
THE DOOR IS NOW REVERSED 180 DEGREES. PROCEED TO STEP 6.

REVERSING THE DOOR CONT.

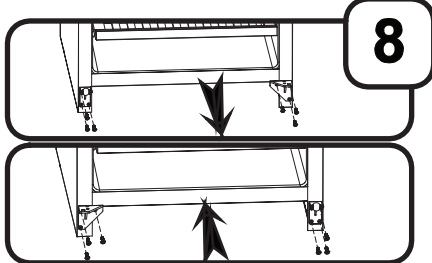
WARNING: Do not attempt to reverse the door alone. This operation requires at least two people to be performed safely. The unit is large, heavy and fragile.



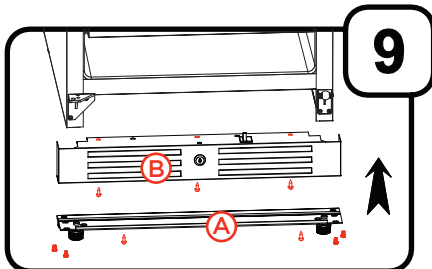
Step 6: Remove the upper hinge on the cabinet and replace it with the opposite facing upper hinge, supplied.



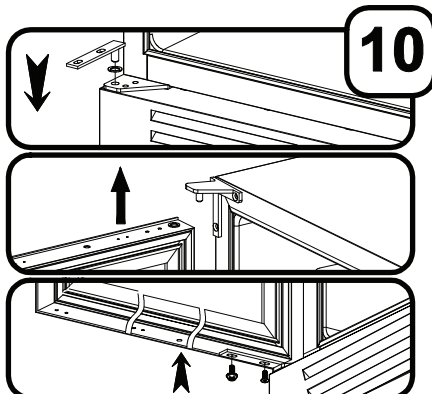
Step 7: Remove the front leveling leg support (A) - this will expose the screws (below and behind) holding the toe kick in place. Remove the toe kick (B).



Step 8: Remove the lower hinge support and door bracket as shown. Reinstall the door bracket on the opposite side and install the new opposite facing lower hinge support in its place.



Step 9: First, replace the toe kick (B) removed in **Step 7**, then replace the front leveling leg support (A) removed in **Step 7**.



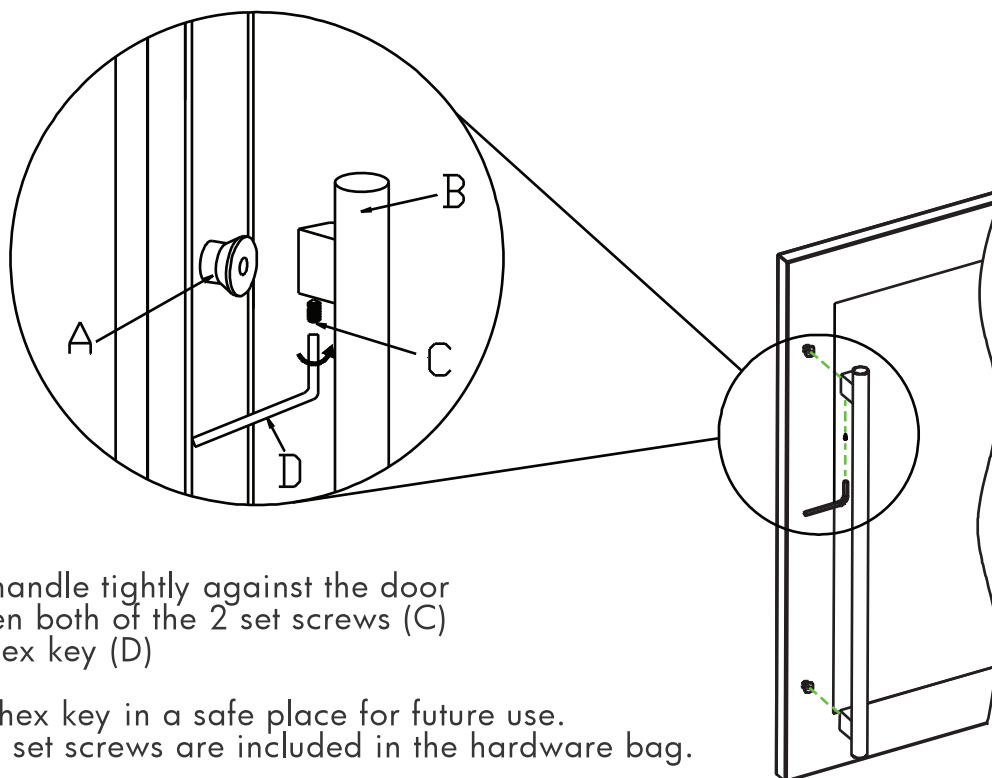
Step 10: Install the lower hinge pin and washer.
TEAM LIFT: Slide the door onto the upper hinge pin, rotate the lower hinge plate into position and secure in place.
NOTE: These two screws are different, the philips head screw installs closest to the cabinet.

AFTER THE DOOR IS SECURE, STAND THE UNIT UPRIGHT AND ALLOW TO STAND AT LEAST 12 HOURS BEFORE PLUGGING IT IN.

GET A GRIP

TIME TO GET A HANDLE ON THIS

Place the handle (B) over the 2 mounting studs (A) on the door frame with the set screws (C) pointing down.

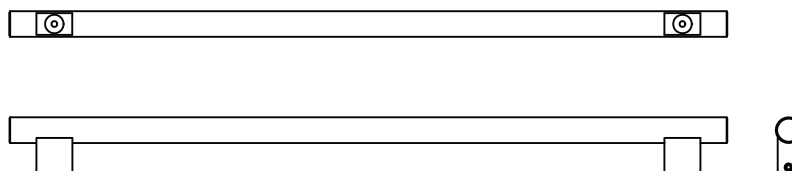


Push the handle tightly against the door and tighten both of the 2 set screws (C) with the hex key (D)

Keep the hex key in a safe place for future use.
Two extra set screws are included in the hardware bag.

Stainless Steel / Glass door models come with a matching stainless steel designer handle.

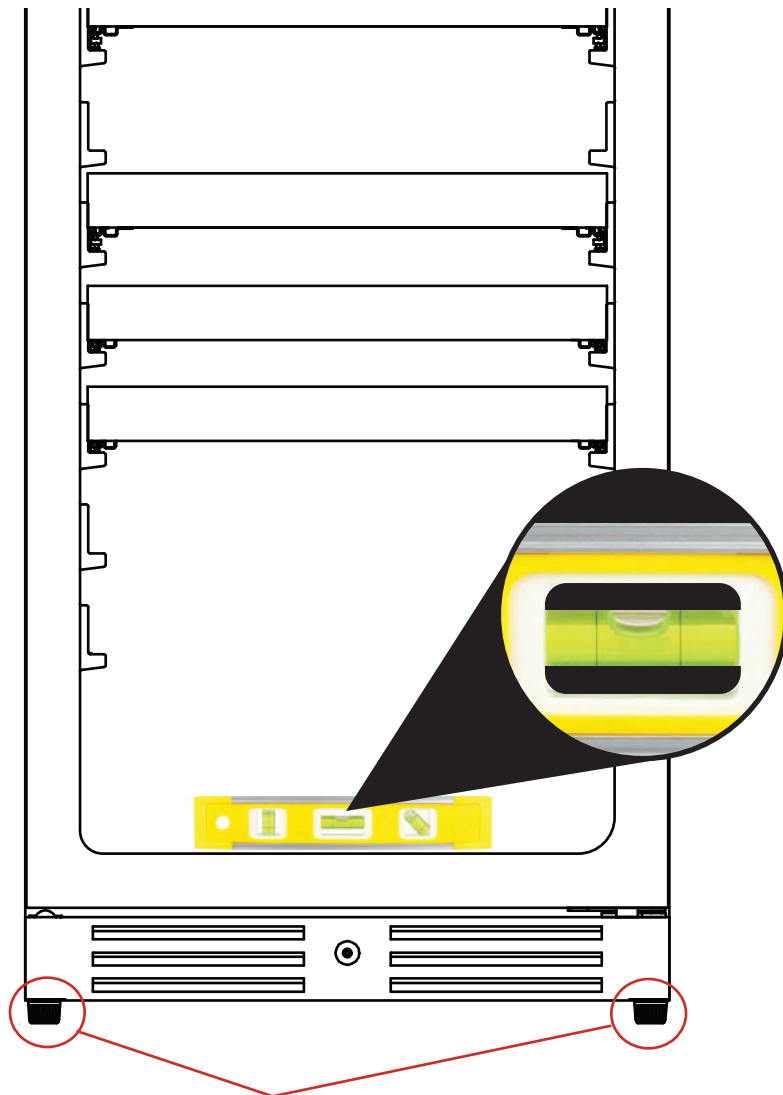
Black glass models come with a black designer handle.



IT'S LIKE ZEN - BUT COOLER

GET YOUR LEVEL OUT

DO NOT NEGLECT THIS IMPORTANT STEP



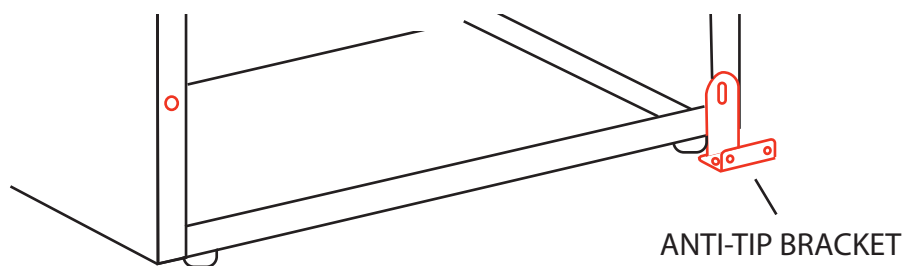
Rotate to raise or lower the **LEVELING LEGS** located at each of the four corners until all four legs are seated firmly on the floor and the interior floor of the unit is level **both front to back and side to side**.

Failure to follow this important step may cause problems with proper door operation, excessive condensation, vibration and noise.

ANTI-TIP BRACKET

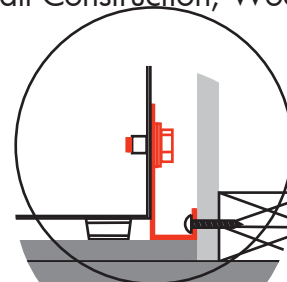
AN ESSENTIAL STEP

When drawers, racks and shelves are extended while loaded, there is a danger of tipping the unit. In these cases an Anti-Tip Bracket must be installed on the rear right or left side.

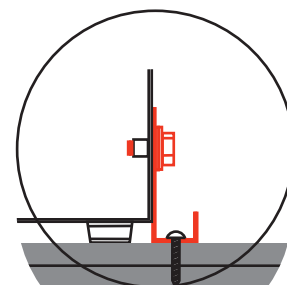


The Anti-Tip Bracket kit comes with a bolt and washers to mount to the rear of the refrigerator and three different sets of fasteners to mount it to any of the following: Dry Wall Construction, Wooden Flooring or Concrete Flooring.

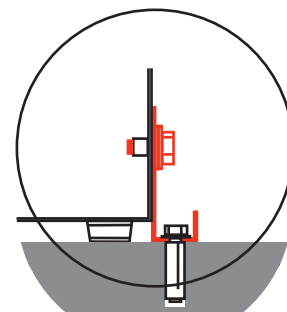
DRYWALL CONSTRUCTION: (2 Screws) The bracket is screwed to the wall and at least one of the screws must be into a stud within the wall.



WOODEN FLOORING: (2 Screws) The bracket must be screwed down into the flooring.

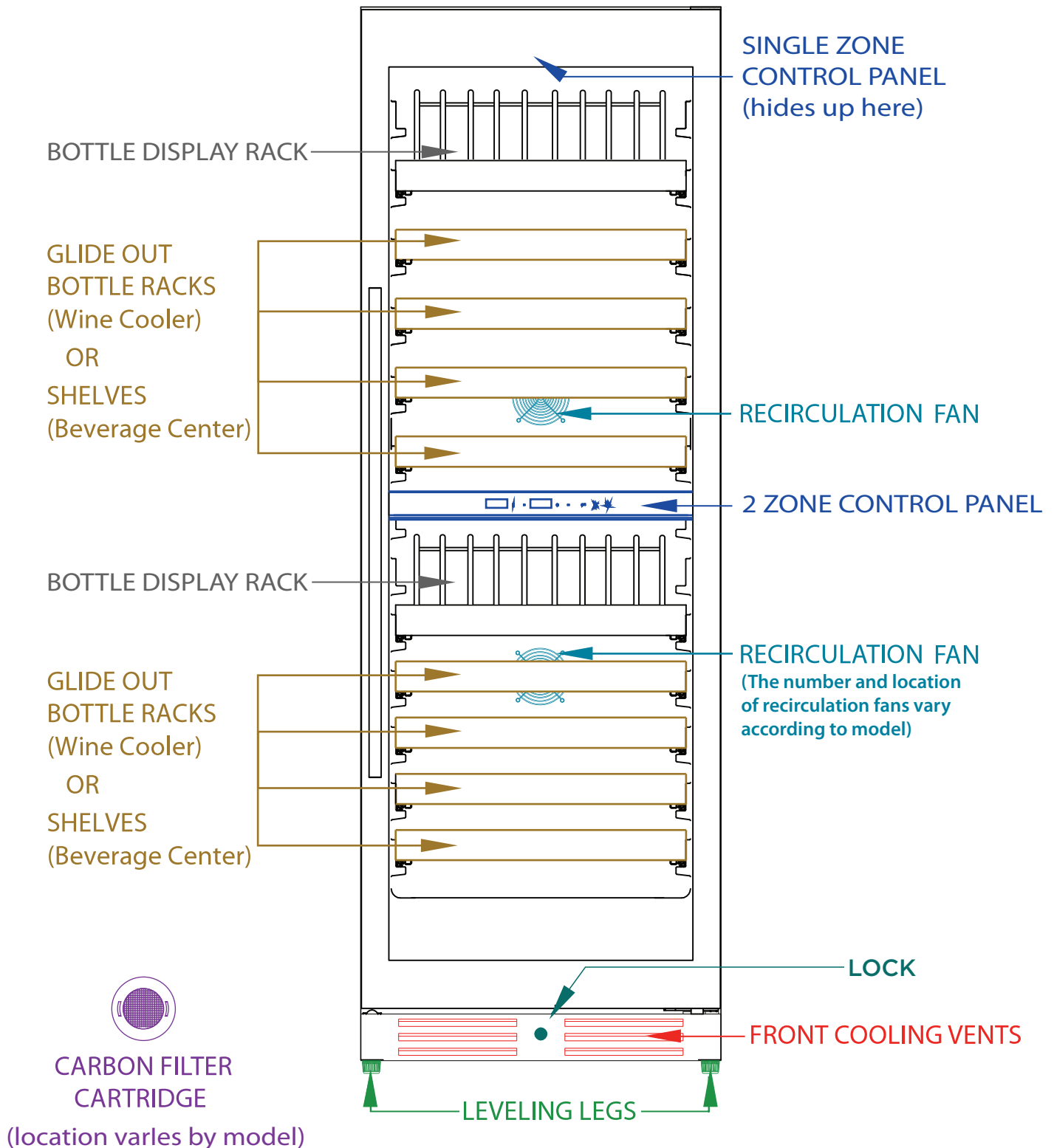


CONCRETE FLOORING: (Expansion Bolt) A 3/8" hole is bored into the flooring 1 3/4" to 2" deep. The expansion sleeve is set with a mallet into the hole and the bracket is bolted to the floor.



Make certain that the unit will not tip when finished.
FAILURE TO SECURE THE UNIT PROPERLY CAN CREATE A DANGEROUS CONDITION.

MEET YOUR XO



TAKE CONTROL

TEMPERATURE

54 °C
°F

Single Zone Wine Coolers and Beverage Centers have identical control panels.

Single Zone Wine Cooler Temp. Settings
Factory Preset: 54°F (Ideal Storage)
Adjustable Range: 41°F to 64°F

Beverage Center Temp. Settings
Factory Preset: 43°F
Adjustable Range: 34°F to 50°F

Your Wine Cooler or Beverage Center remembers your temperature setting in case of a power failure and automatically adjusts to the previous setting when power is restored.

When the +/- button is pressed, your wine cellar automatically enters set up mode. The LED Display will begin flashing and display the temperature setting.

Each time you press the + button, the temperature setting will increase 1 Degree.

Each time you press the - button, the temperature setting will decrease 1 Degree.

Once you have reached the desired temperature setting, the display will continue to flash for 5 seconds, then revert to showing the compartment temperature.


To view the real time temperature, press and hold the +/- button for 5 seconds. The interior temperature will flash in the LED Display for 5 seconds.

If you wish to change the display from Fahrenheit to Celsius (or vice versa) press and hold both "+" and "-" simultaneously for 5 seconds.

LED LIGHTS



L1: When you turn on your wine cellar, the internal light will switch on when the door is opened, and off when the door is closed.

L2: Press  , the internal light will remain on continuously and dim after 3 minutes.


L3: Press  twice, the internal light will remain on for 10 minutes and then shut off.

TAKE CONTROL

CONTINUED

COLORS!



When you turn your wine cellar or beverage center, the interior light is white, press  and the light will change to blue.

Press  again and the light will change to amber.

SWITCHING MODES



When you turn your XO Unit on, it is set to work in standard mode.

Press  ECO mode is turned on. ECO Mode is an energy saver function.

Press  again, ECO mode is turned off and it returns to standard mode.


ECO Mode also serves as SABBATH Mode.

The Sabbath Mode was designed for use on the Jewish Sabbath and Holidays.

The Sabbath Mode feature makes it possible for observant Jews to use the beverage center during the duration of the holiday. The Sabbath Mode feature can be set to override typical reactions caused by your interaction with the unit. While in the Sabbath Mode, your appliance will still operate. However, it will not respond to your actions.

While in the Sabbath Mode, you may notice the fan running when the door is opened, however, this is not a result of your actions. The compressor and fan will operate at predetermined times.

Press  for 5 seconds, DEMO mode is turned on.

Press  for 5 seconds again, DEMO mode is turned off and it returns to standard mode.

Your controls are simple and intuitive to operate.



SABBATH MODES



Press " "+"  " for 5 seconds. The display show "Sb" for single window model, the display show "Sb On" for two windows model. Sabbath mode is on.

Under Sabbath mode, the inner light turn off, and there is not any action when touch the button, and the inner fan keep running.

If the inner temperature is higher than 73 ° F, "HI" is shown on the display panel. If the inner temperature is lower than 32 ° F, "LO" is shown on the display, the alarm will be sounded in 10 minutes.

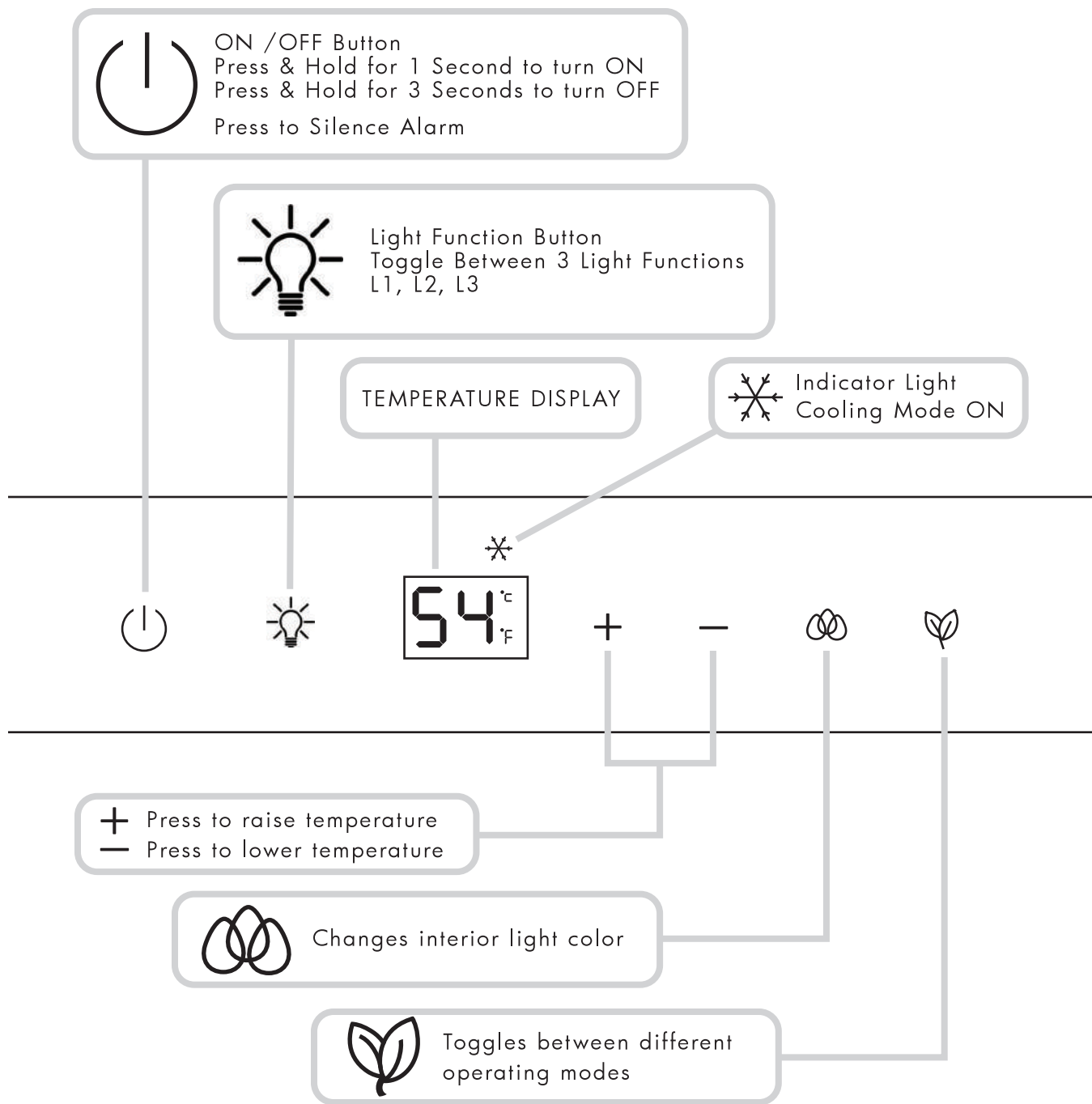
Press " "+"  " for 5 seconds again, the Sabbath mode is off and the cooler is under normal mode again. The display will show the setting temperature.

I love
saving
Energy!

XO

SINGLE ZONE CONTROL

BEVERAGE CENTERS OR 1 ZONE WINE COOLERS



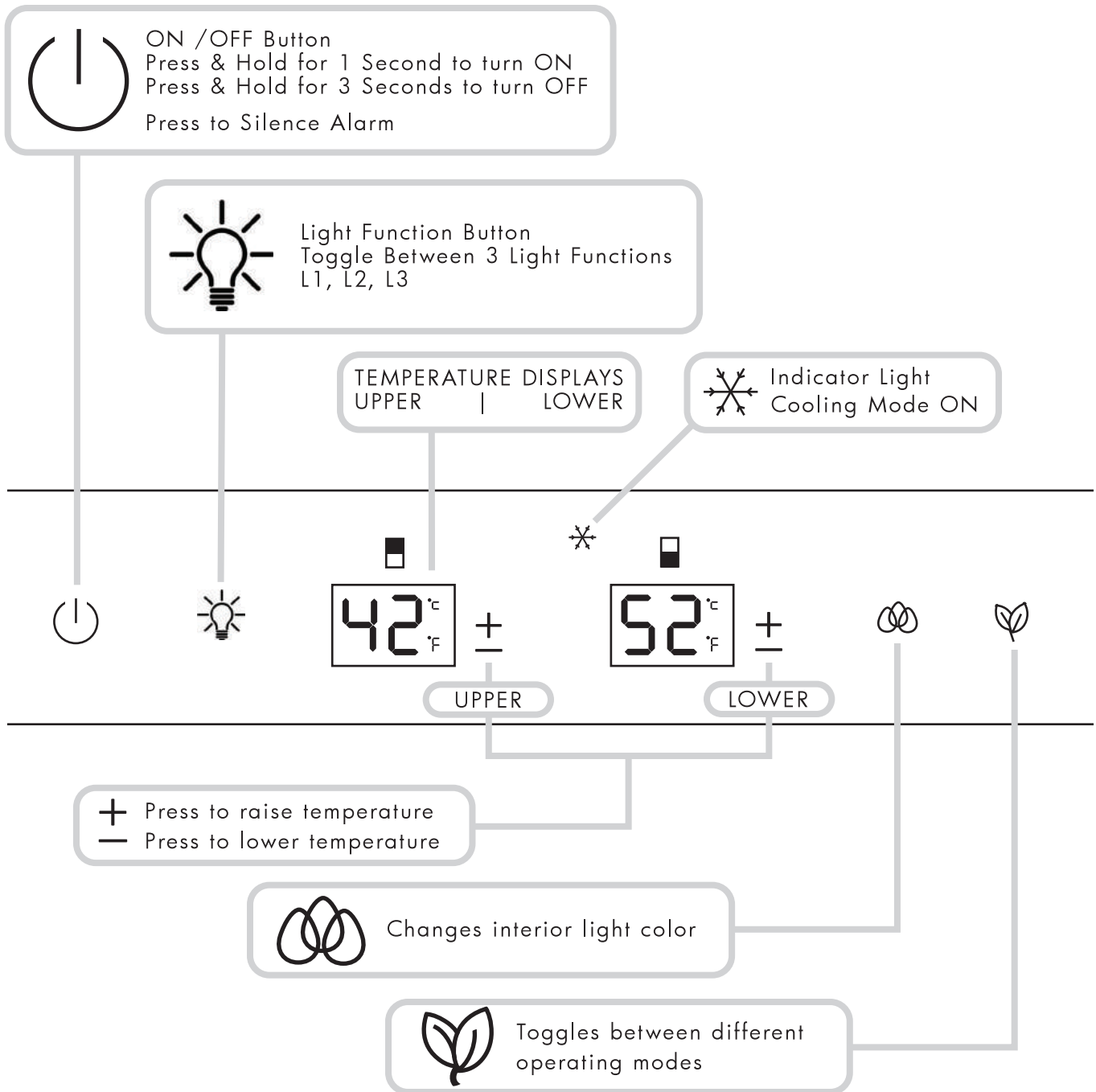
The temperature setting can be adjusted from 41-64°F.
Your controls are simple and intuitive to operate.

54°F is usually
ideal for wine
storage.

XO

DUAL ZONE CONTROL

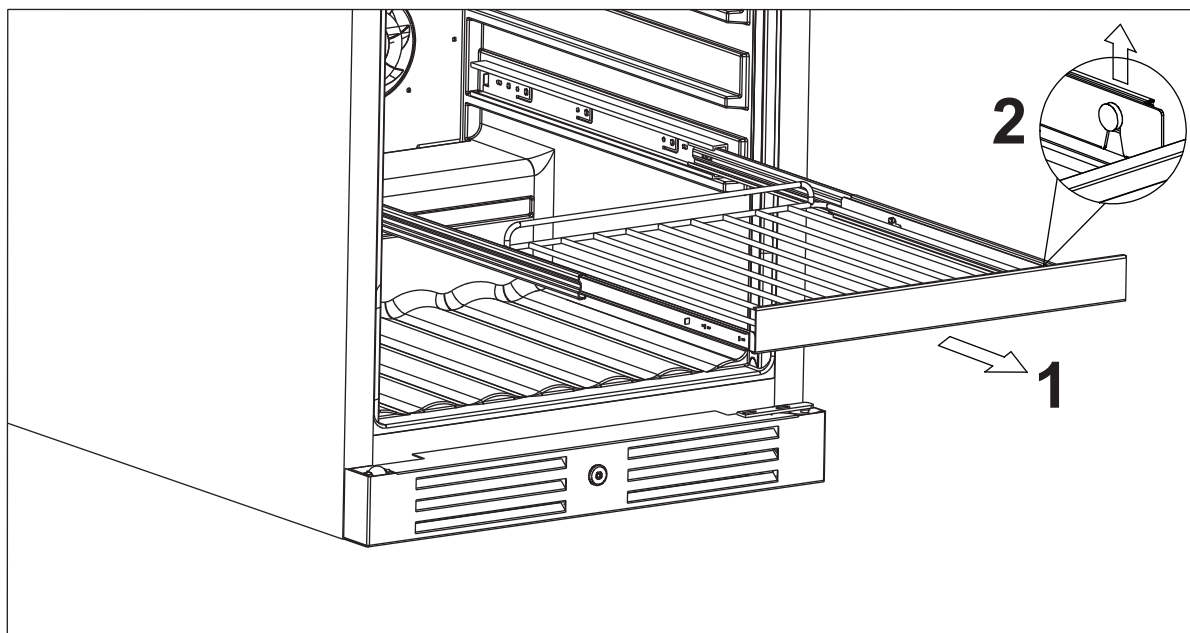
2 ZONE WINE COOLERS



Upper compartment: The temperature setting can be adjusted from 41-50°F.
 Lower compartment: The temperature setting can be adjusted from 50-64°F.
 Your controls are simple and intuitive to operate.

JUGGLING SPACE

IS EASY WITH XO



1. Fully extend the shelf you wish to remove,
2. Lift the front of the shelf up to remove from the front clips,
3. While holding one of the telescoping glides, push the shelf or rack in and then pull up at the back to release it from the rear clip. Repeat with the other side to complete disconnecting the shelf or rack.

**ALL SHELVES MUST BE PUSHED ALL THE WAY IN BEFORE CLOSING THE DOOR
DOOR MUST BE FULLY OPENED BEFORE PULLING SHELVES OUT**

CAPACITIES

HOW MUCH CAN MY UNIT HOLD

Wine bottles and other types of beverage containers come in a host of different sizes and shapes. The following is provided as a general guideline, wine bottles are assumed to 750ml / Bordeaux style unless otherwise noted.

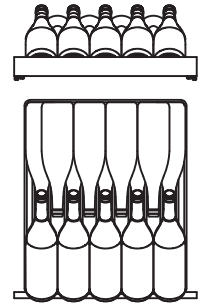
WINE DISPLAY RACKS

The display racks present in both the single zone and two zone wine storage cabinets are designed to showcase up to 5 bottles.

These racks also have the ability to rack up to 9 bottles behind the bottles on display - see diagram, right.

XOU2470WGS and XOU2470BG have 1 display racks.

XOU2470WDZGS and XOU2470WDZBG have 2 display racks, 1 per zone.

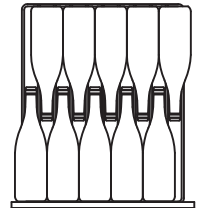


WINE STORAGE RACKS

These racks have the ability to rack up to 10 bottles side by side - see diagram, right.

XOU2470WGS and XOU2470BG have 11 storage racks.

XOU2470WDZGS and XOU2470WDZBG have 8 storage racks, 4 per zone.



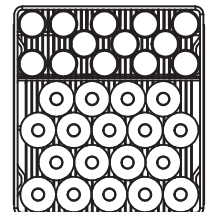
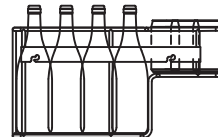
In addition, up to 11 bottles may also be stored lying flat on the floor of the unit.

BEVERAGE CENTER SHELVES AND BINS

The clear glass shelving of the beverage centers have the ability to store a variety of different size and shape beverage containers.

In addition to shelving, these units incorporate a slide out bin which has two levels to fit both 12oz cans and tall bottles, standing up - see diagram, right.

This includes XOU2470BCGS and XOU2470BG.

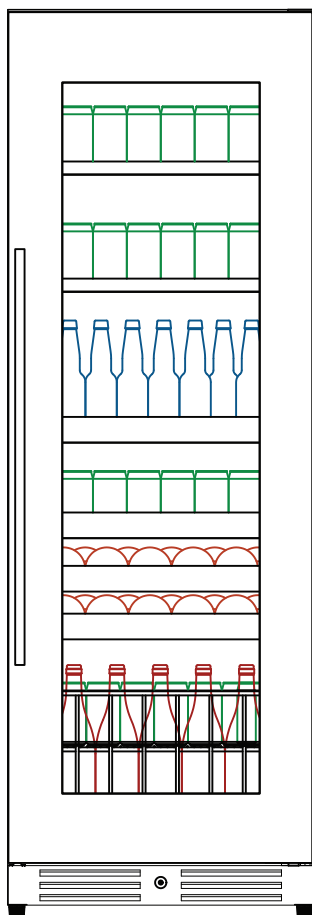


Store wine in sealed bottles only
Avoid overloading
Storing little or no product can cause excessive condensation

CAPACITIES

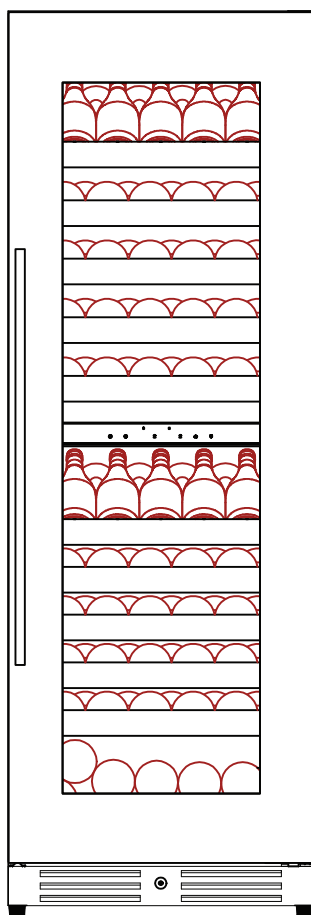
HOW MUCH CAN MY UNIT HOLD

XOU2470BCGS
XOU2470BCBG



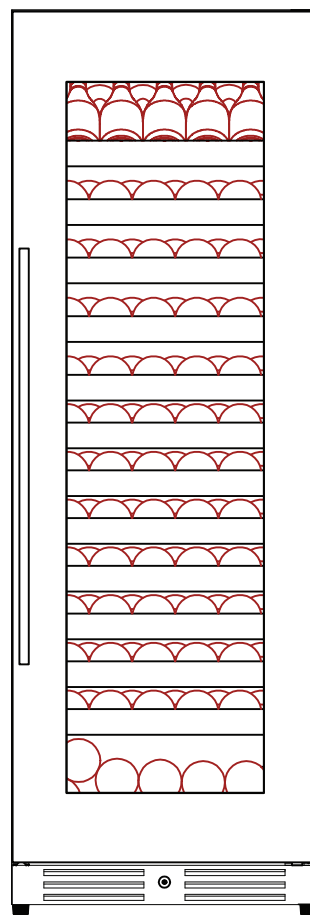
**BEVERAGE
CENTER**
144 (12oz) CANS
+40 BOTTLES

XOU2470WDZGS
XOU2470WDZBG



**2 ZONE
WINE**
119 (750ml)
BOTTLES

XOU2470WGS
XOU2470WBG



**1 ZONE
WINE**
135 (750ml)
BOTTLES

Assumptions are taken regarding bottle / can size and shape.
Values are max loading estimates.

A LITTLE TLC GOES A LONG WAY

Cleaning the Inside:

Walls, floor, inside window, and shelves - Some water deposits and dust can be removed with a dry paper towel, others may require a damp cloth.

Cleaning the Outside:

Outer case - It is important to keep the area clean where the door seals against the cabinet. Clean this area with a soapy cloth. Rinse with a damp cloth and let dry.

Control Panel and Door - Wipe with a damp cloth and dry thoroughly. Do not use cleaning sprays, large amounts of soap and water, abrasive, or sharp objects on the panel, they can damage it.
CAUTION: Some paper towels may also scratch the control panel and glass on the door.

Door Surface - Use only mild, non-abrasive detergents applied with a clean sponge or soft cloth. Rinse well with damp cloth.

NOTE: Do not use cleaners containing ammonia or alcohol on your XO unit. Ammonia or alcohol can damage the appearance of the appliance.

NOTE: Never use any commercial/abrasive cleaners or sharp objects on any part of the wine cooler.

POWER FAILURE

Most power failures are corrected within a few hours and should not affect the temperature of your appliance if you minimize the number of times the door is opened.

If the power is off for a longer period of time, you need to take the proper steps to protect your contents.

VACATION

Short vacations: Leave the XO unit operating during vacations of less than three (3) weeks.

Long vacations: If the appliance will not be used for an extended period, remove all items and turn off the appliance.

Clean and dry the interior thoroughly. To prevent odor and mold growth, leave the door open slightly, blocking it open if necessary.

ENERGY SAVING TIP

The unit should be located in the coolest area of the room, away from heat producing appliances, and out of direct sunlight.

MOVING

Remove all items and securely tape down all loose items (shelves) inside your appliance

Turn the adjustable leveling legs all the way into the base to avoid damage

Tape the door shut and transport the XO unit securely in the upright position

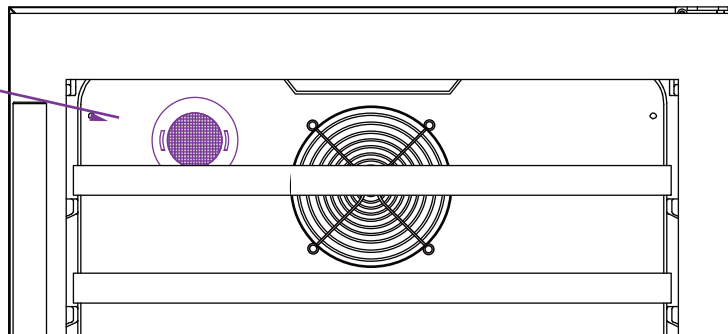
Blanket wrap the exterior to help protect against scratches and other damage

A BREATHE OF FRESH AIR

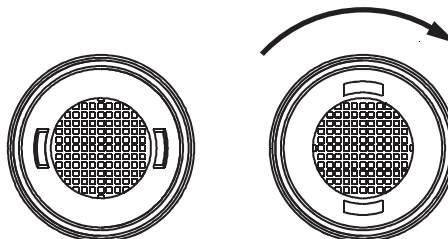
NOTE: Not all models are equipped with XOUAIRFILTER

The location of the
Air Filter will vary
according to model

P/N: XOUAIRFILTER

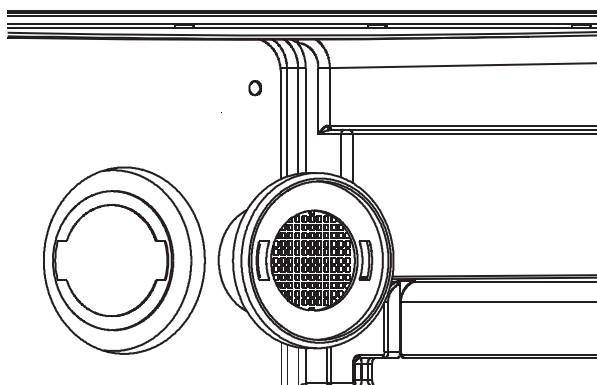


Rotate the filter 1/4 turn
to unlock

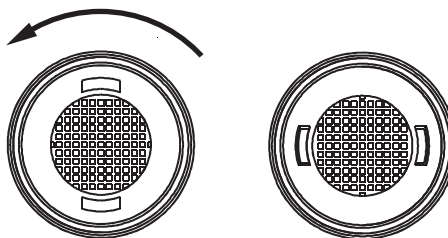


Pull straight out to remove

Align the tabs and
insert the new filter



Rotate filter 1/4 turn
to lock in place



FAQ'S

Q. There doesn't appear to be any power to the unit.

A. There are 3 easy to check common causes:

- (1) Check to see if a fuse has blown or circuit breaker has tripped & replace or reset.
- (2) Check to ensure the plug is fully inserted into the outlet.
- (3) A power surge may have caused the unit to shut down to protect itself - Unplug the unit, wait 5 seconds and plug it back in.

Q. The cabinet temperature is too high.

A. Check these 5 things:

- (1) Check the temperature setting and adjust as needed.
- (2) Make certain the door is completely closed and the door gasket is sealing properly.
- (3) Avoid opening the door frequently and/or leaving the door open for extended periods.
- (4) Did you load a large quantity of warm bottles at once? It is better to add smaller quantities in several loads.
- (5) Make certain nothing is blocking the toe kick vents (including dust behind the vents).

Q. The alarm is beeping and "HI" is displayed on the control panel.

A. See the question and answers above - if the door has been tightly closed and you have not recently added a large quantity of warm bottles, it may be a mechanical issue. Unplug the unit and call for service.

Q. The alarm is beeping and "LO" is displayed on the control panel.

A. This may be a sensor malfunction. Unplug the unit and call for service.

MORE "Q & A"

Q. Why does condensation form on the inside or outside of my XO unit?

A. It may be that the door is either opened repeatedly or not closed completely. It may also be due to an excessive ambient humidity, in which case it will clear when the humidity drops.

Q. There is warm air coming from the bottom of my unit.

A. This is normal. Cooling systems must vent the heat they remove from inside the cabinet.

Q. Why does the evaporator fan run all the time?

A. It continually recirculates air to ensure cabinet temperatures are consistent.

Q. How do I adjust temperature?

A. Refer to Page 17.

Q. How do I adjust shelving?

A. Refer to Page 21.

Q. When does the high temperature alarm sound?

A. If internal temperature exceeds 73°F for more than 60 minutes.

Q. If the door hinge is next to a wall, how much clearance do I need to open the door?

A. The unit should be at least 2" from the wall to allow the door to open at least 90°.

NOTES:

WE'VE GOT YOUR BACK

90 DAY LOVE IT or LEAVE IT. For 90 Days all our products are backed by our unique Love it or Leave it Guarantee.

TWO-YEAR PARTS & LABOR LIMITED WARRANTY. XO warrants to the original purchaser of every new XO refrigerated unit, the cabinet and all parts thereof, to be free from defects in material or workmanship under normal and proper use and maintenance as specified by XO and upon proper installation and start-up in accordance with the instruction packet supplied with each XO unit. XO's obligation under this warranty is limited to a period of two (2) years from the date of original purchase.

FIVE-YEAR COMPRESSOR LIMITED WARRANTY. XO warrants its compressor to be free from defects in both material and workmanship under normal and proper use and maintenance service for a period of five (5) years from the date of original purchase. If the compressor fails during that time period due to a defect in material or workmanship, XO will supply a replacement compressor free of charge. The consumer will be responsible for all related transportation and labor costs. Product must be registered with XO to qualify for this warranty.

TERMS APPLICABLE TO EACH WARRANTY. Any part covered under the above warranties that is determined by XO to have been defective within the time frame is limited to the repair or replacement, including labor charges, of defective parts or assemblies. The labor warranty shall include standard straight time labor charges only and reasonable travel time, as determined by XO.

WARRANTY CLAIMS. All claims for labor or parts must be made directly through XO. All claims should include: model number and serial number of cabinet, proof of purchase, and date of installation. In case of warranted compressor, the compressor model tag must be returned to XO along with the above listed information.

WHAT IS NOT COVERED BY THIS WARRANTY. XO's sole obligation under this warranty is limited to either repair or replacement of parts, subject to the additional limitations below. This warranty neither assumes nor authorizes any person to assume obligations other than those expressly covered by this warranty. Open box, factory seconds, scratch and dent, and floor models are excluded from these warranties. Consumer shall be responsible for labor and transportation costs where noted above.

NO CONSEQUENTIAL DAMAGES. XO is not responsible for economic loss, profit loss; or special, indirect or consequential damages, including without limitation, losses or damages arising from food or product spoilage claims whether or not on account or refrigeration failure.

WARRANTY IS NOT TRANSFERABLE. This warranty is not assignable and applies only in favor of the original purchaser/user at the original installation location. Any such assignment or transfer shall void the warranties herein made and shall void all warranties, express or implied, including any warranty or merchantability or fitness for a particular purpose.

IMPROPER USAGE. XO assumes no liability for parts or labor coverage for component failure or other damages resulting from improper usage or installation or failure to clean and/or maintain product as set forth in the warranty packet provided with the unit.

ALTERATION OR NEGLECT. XO is not responsible for the repair or replacement of any parts that XO determines have been subjected after the date of manufacture to alteration, neglect, abuse, misuse, accident, damage during transit or installation, fire, flood, or act of God.

IMPROPER ELECTRICAL CONNECTIONS. XO is not responsible for the repair or replacement of failed or damaged components resulting from electrical power failure, high or low voltage, use of extension cords, or improper grounding of the unit.

YOUR RIGHTS UNDER STATE LAW. This warranty gives you specific legal rights and you may have other rights that vary from state to state. Some states do not allow the exclusion or limitation of consequential damages or a limitation on how long an implied warranty lasts, so the above exclusion or limitation may not apply to you.

OUTSIDE U.S. This warranty does not apply to, and XO is not responsible for, any warranty claims made on products sold or used outside the 48 continental United States.

To obtain service:

Call 973-403-8900 | email service@xoappliance.com | or submit a request on our website
www.xoappliance.com



2023.04.10

