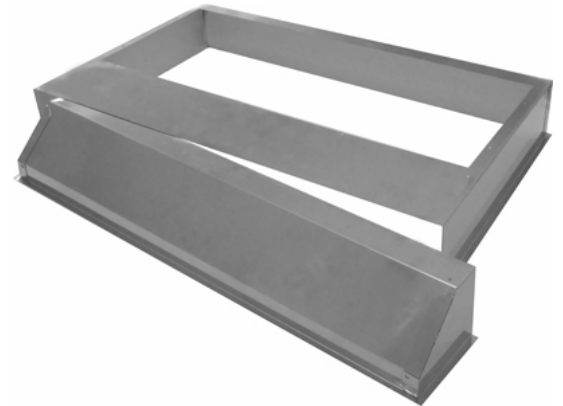




**XOILINER**  
CUSTOM INSERT LINER

HOW BEAUTIFUL KITCHENS BREATHE



**XOILINER**

- Fabricated at the Factory to Fit
- Brushed Stainless Steel Finish
- Flexible Design Allows Depth Adjustment
- Comes in 30" and 36" Widths

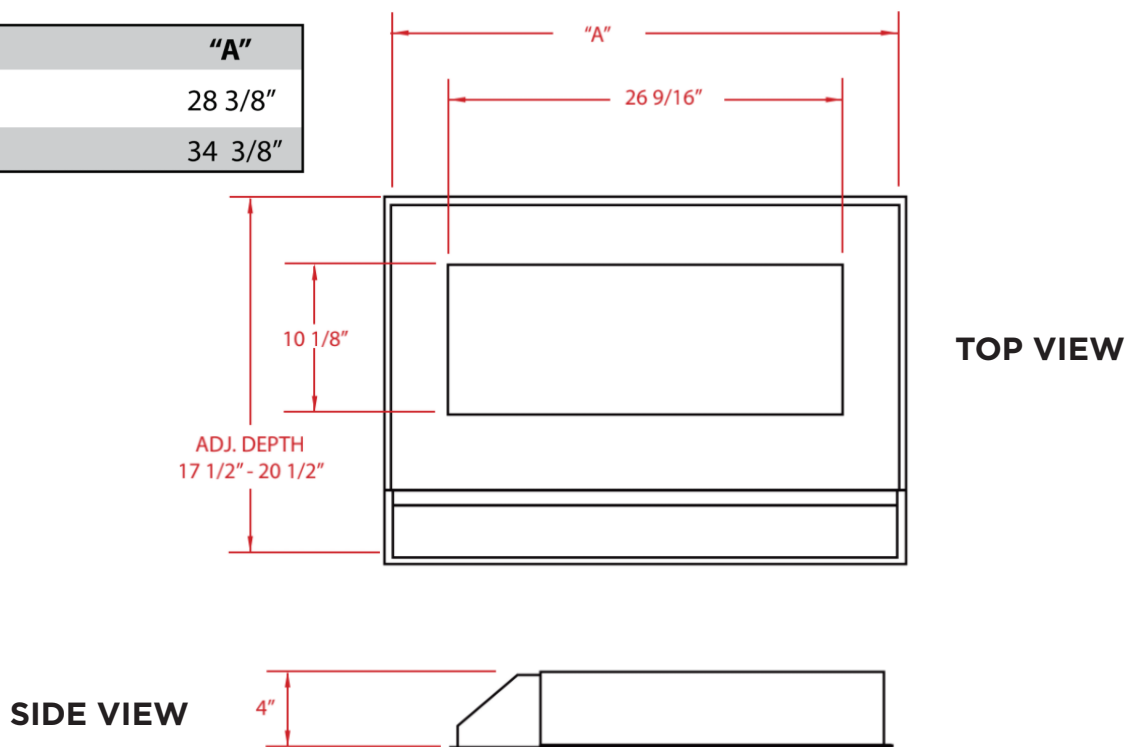
## SAFETY FIRST AND FOREMOST

XO Liners provide a beautiful way to finish your custom hood and protect your cabinetry. This adjustable two part stainless steel liner can be used with either the XO127S or the XO128S. The XOILINER is available in two popular widths, 30" and 36". The two part design allows you to accommodate canopy depths from 17 1/2" to 20 1/2".

WORLD CLASS SERVICE | COMPREHENSIVE WARRANTIES

OUR LASTING COMMITMENT TO YOU

MODEL	"A"
XOILINER30	28 3/8"
XOILINER36	34 3/8"



### FEATURES

### SPECIFICATIONS

#### FINISH

Brushed Stainless Steel

#### FEATURES

- Fabricated at the Factory to Fit
- Flexible Design- 17 1/2" to 20 1/2" depth adjustment
- Fits Custom Hood Widths: 30" or 36"
- 4" Depth for Excellent Capture
- Wipes Clean Easily
- For Indoor Use Only
- Meets Building Code Standards
- No Need for Custom Liner Fabrication

**MODEL:** XOILINER30, XOLINER36

**Size: 30" Depth:** 17 1/2" to 20 1/2"

**Size: 36" Depth:** 17 1/2" to 20 1/2"

### DIMENSIONS

#### XOILINER30

Overall: 28 3/8" W  
17 1/2" - 20 1/2" D (adjustable)  
4" T

#### XOILINER36

Overall: 34 3/8" W  
17 1/2" - 20 1/2" D (adjustable)  
4" T

Mounting Height from cooking surface 27" - 32"

### WORKS WITH MODELS:

- XOI27SC
- XOI28SC