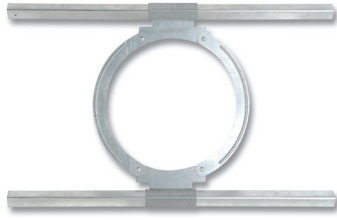


# Ceiling Tile Brackets



## CTB-C800

One each ceiling tile bracket used in drop ceiling and T-bar type ceiling applications. Fits 8" 2-way, LCR & twin-tweeter ceiling speakers.

ITEM	U/M
CTB11801	Each

## CTB-C600

One each ceiling tile bracket used in drop ceiling and T-bar type ceiling applications. Fits 6½" 2-way, LCR & twin-tweeter ceiling speakers.

ITEM	U/M
CTB11601	Each

---

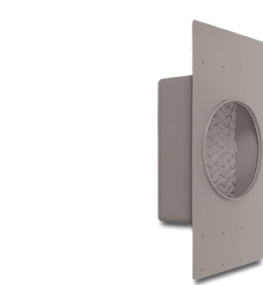
# Back Boxes

## BB-IWS10

Medium Density Fiberboard (MDF) back box for the IWS105 inwall sub, designed to fit any standard 16" stud bay. Cuts down on translational energy vibration between adjacent walls. The IWS105 sub is tuned to the BB-IWS10 back box. *Not for use with ICS11.*

• Dimensions (H x W x D): 42¾" x 143/8" x 3¼"

ITEM	U/M
PAS02100	Each



## BB-C800

One metal back box for 8" 2-way, LCR & twin-tweeter ceiling speakers. **UL 263-03 1-hour fire rating.**

ITEM	U/M
PAS01800	Each

## BB-C650

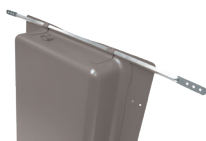
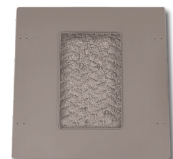
One metal back box for 6½" 2-way, LCR & twin-tweeter ceiling speakers. CMB-24 mounting bars are needed when installing in ceiling joists 24" on-center or suspended ceilings. **UL 263-03 1-hour fire rating.**

ITEM	U/M
PAS01603	Each

## BB-W600

One metal back box for 6½" inwall speakers. **UL 263-03 1-hour fire rating.**

ITEM	U/M
PAS02600	Each



## CMB-24

One pair of ceiling mounting bars slip into clips on BB-C650 back box. For installation in ceiling joists 24" on-center or suspended ceilings.

ITEM	U/M
PAS01000	Pair