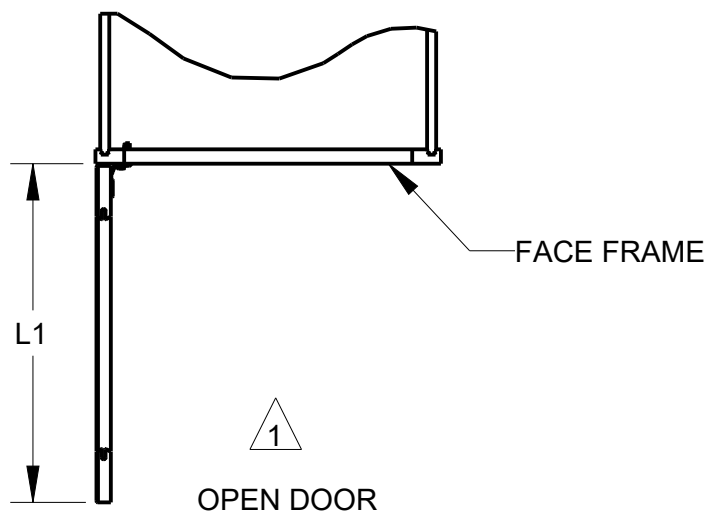
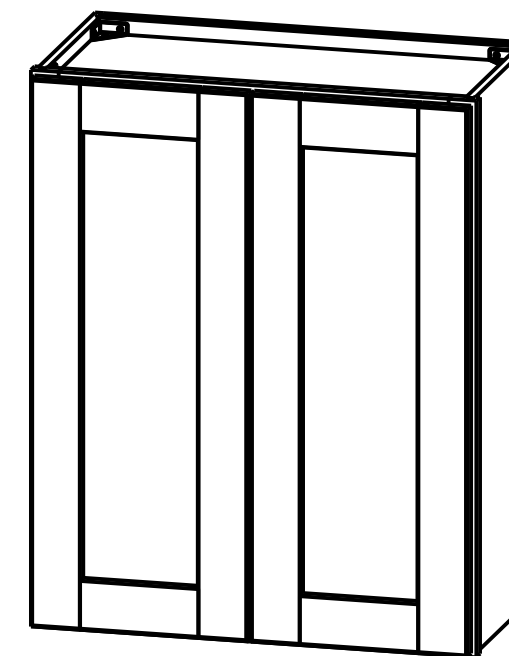
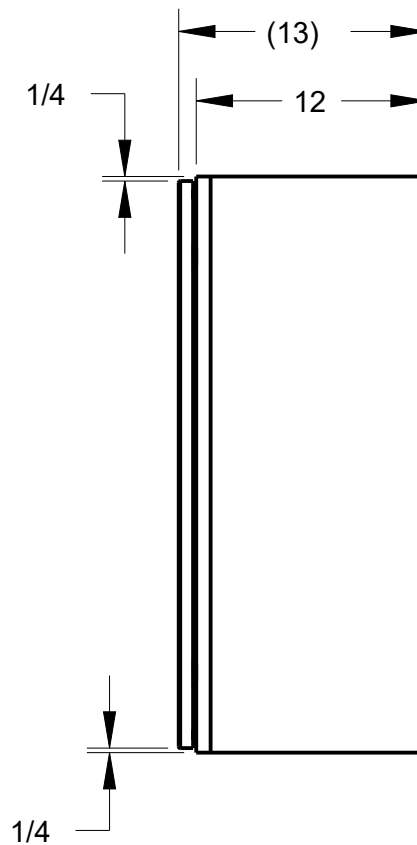
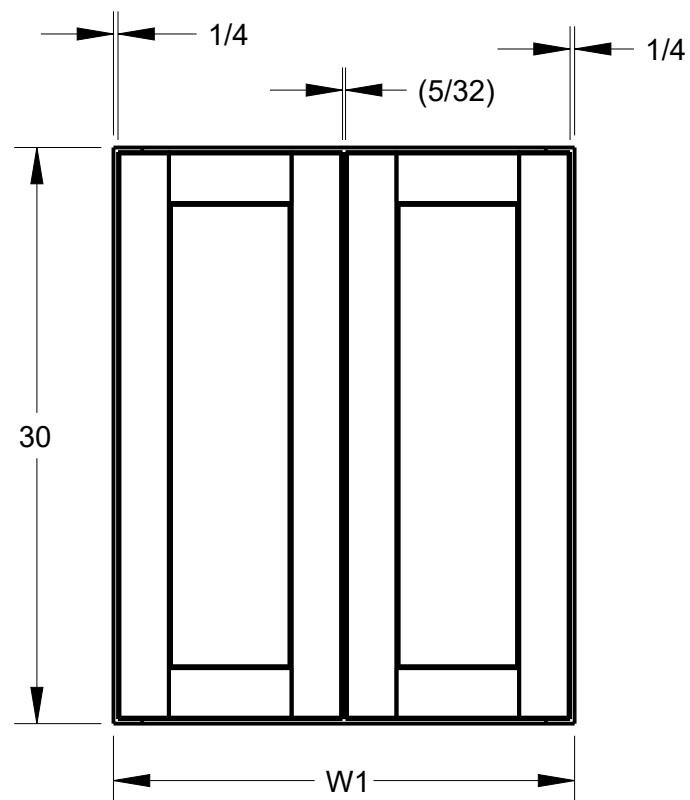


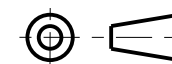
NOTES:

1 OPEN DOOR VIEW INCLUDES HINGE SPACE OFFSET.



PRODUCT	W1	L1	DOOR SIZE
			ROUNDED TO THE NEAREST 1/32
W2430	24"	11 13/16"	11 11/16" X 29 17/32"
W2730	27"	13 5/16"	13 3/16" X 29 17/32"
W3030	30"	14 13/16"	14 11/16" X 29 17/32"
W3330	33"	16 5/16"	16 3/16" X 29 17/32"
W3630	36"	17 13/16"	17 11/16" X 29 17/32"

THIRD ANGLE PROJECTION



MATERIAL

N/A

FINISH

N/A

hardware resources

DESCRIPTION

W2430, W2730, W3030, W3330, W3630
FULL OVERLAY

PRODUCT SHOWN W2430

DOCUMENT STATUS Released

DRAWN BY
E.GOLESTANYAN

DATE
19MAR2020

DESIGNED BY
NORTHPOINT

DATE

APPROVED BY
GREG DAVIS

DATE
27MAR2020

DRAWING NUMBER
W2430-W2730W3030W3330W3630_FULL

REV
B

SIZE
A3

SCALE
0.100

SHEET
1 / 1

HARDWARE RESOURCES RESERVES THE RIGHT TO CHANGE SPECIFICATIONS WITHOUT NOTICE.
IN CASE OF A DISCREPANCY, ACTUAL PART GEOMETRY SUPERSEDES THIS DOCUMENT.

THE INFORMATION CONTAINED WITHIN THIS DRAWING IS THE SOLE PROPERTY OF HARDWARE RESOURCES INC. ANY REPRODUCTION IN PART OR WHOLE WITHOUT WRITTEN PERMISSION OF HARDWARE RESOURCES INC. IS PROHIBITED.