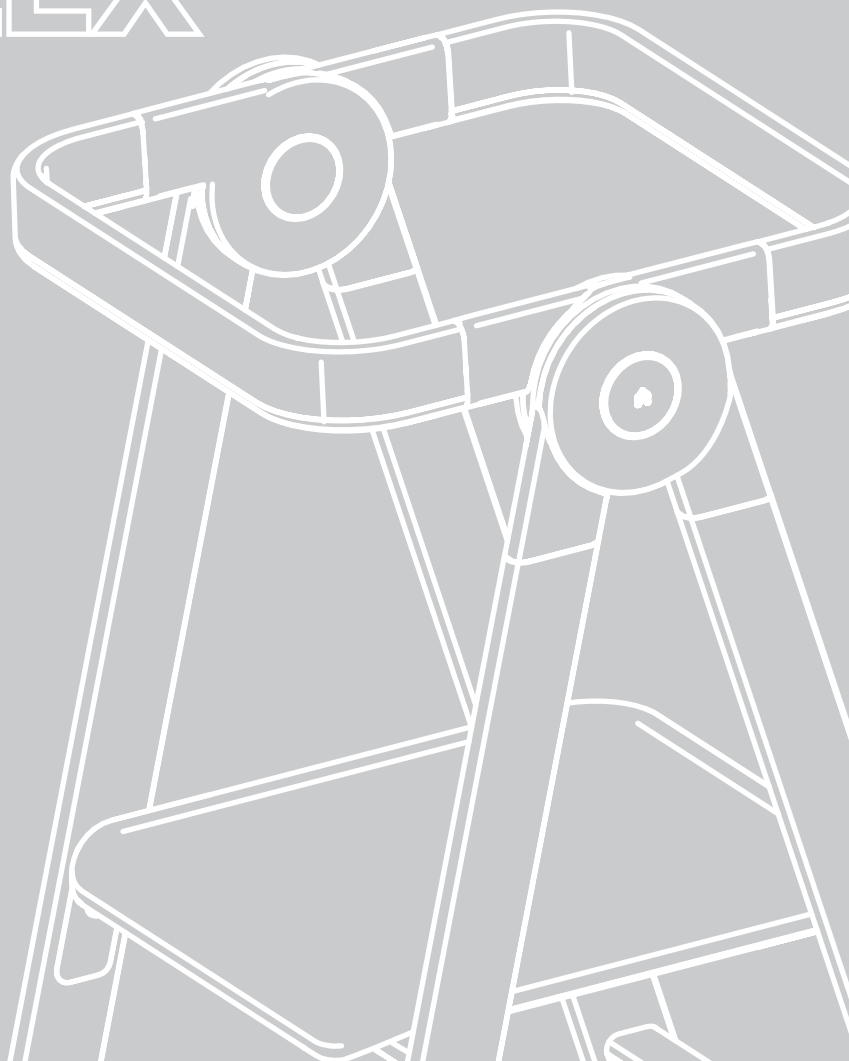


KITCHEN  HELPER™

FLEX



Instruction Manual

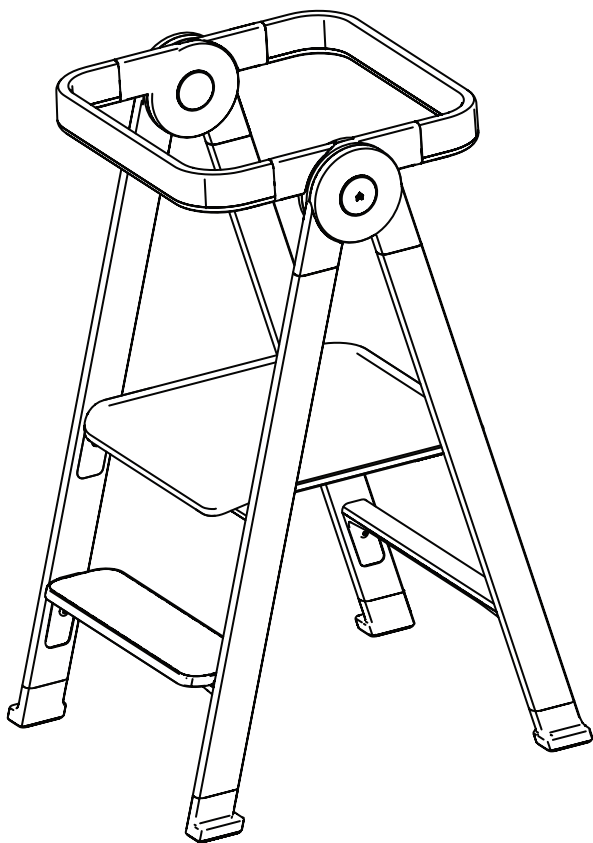
Ensure Appropriate Age and Weight



The Kitchen Helper is intended for children age 18 months+;
Safely supports up to 200 lbs/90 kg

Assembly Instructions

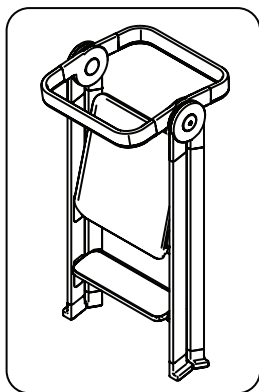
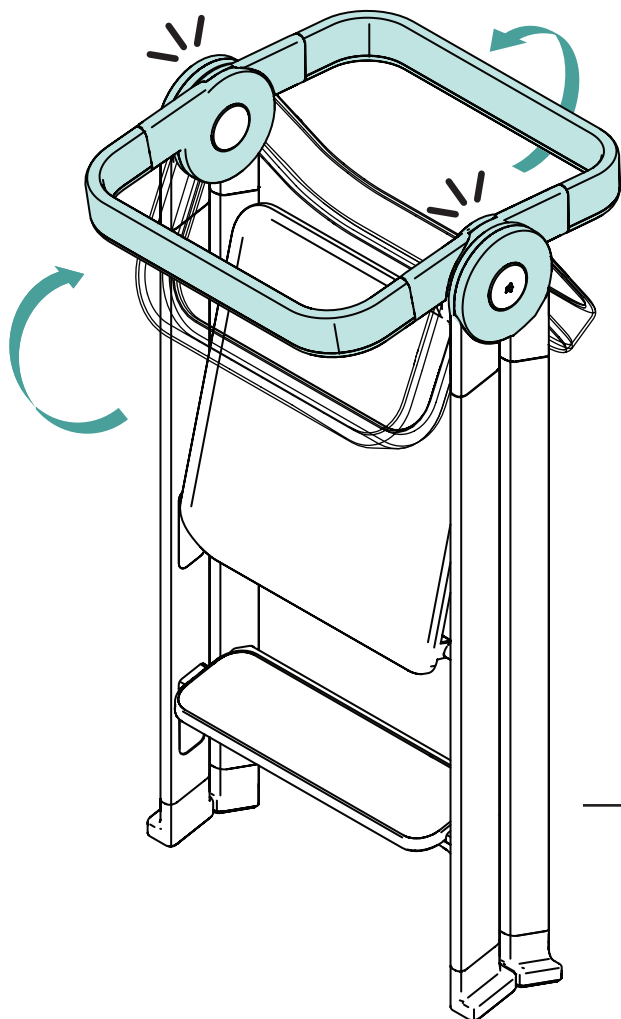
Applicable to all styles and sizes of Kitchen Helper.



Required for assembly.

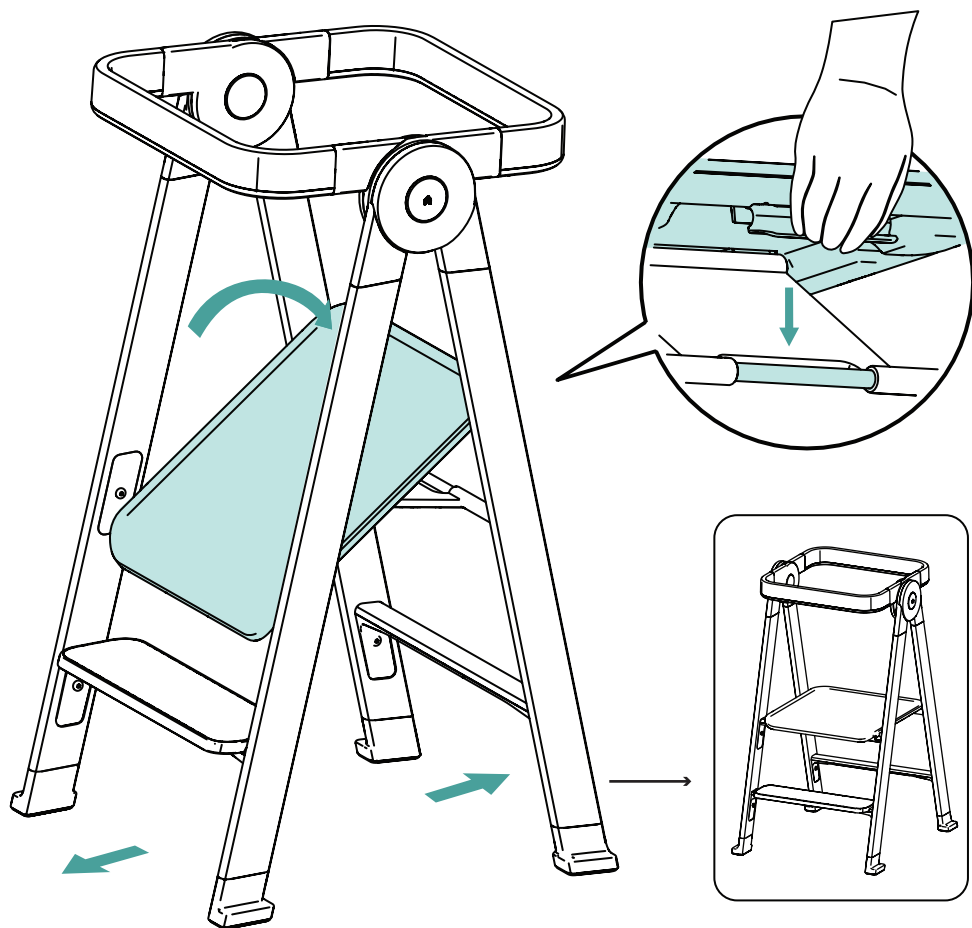
Step 1

Remove item from carton and unfold both guard rails into the locked position.

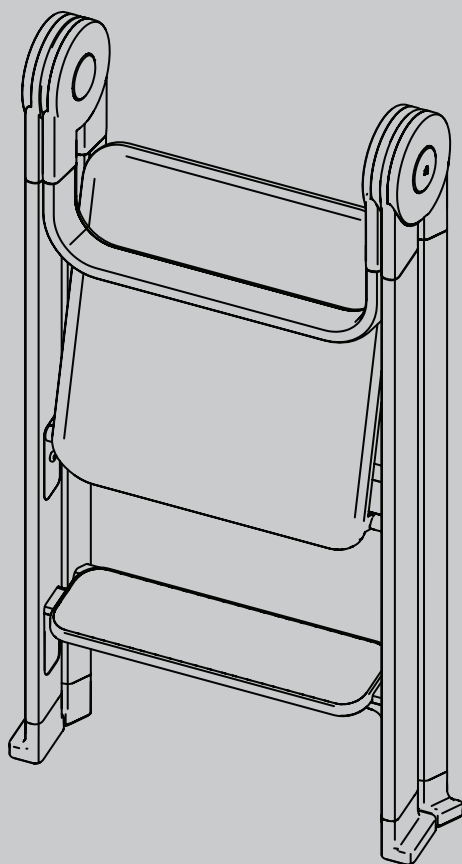


Step 2

Unfold the platform and engage safety latch. Your Kitchen Helper Flex is now ready to use in standing tower mode.

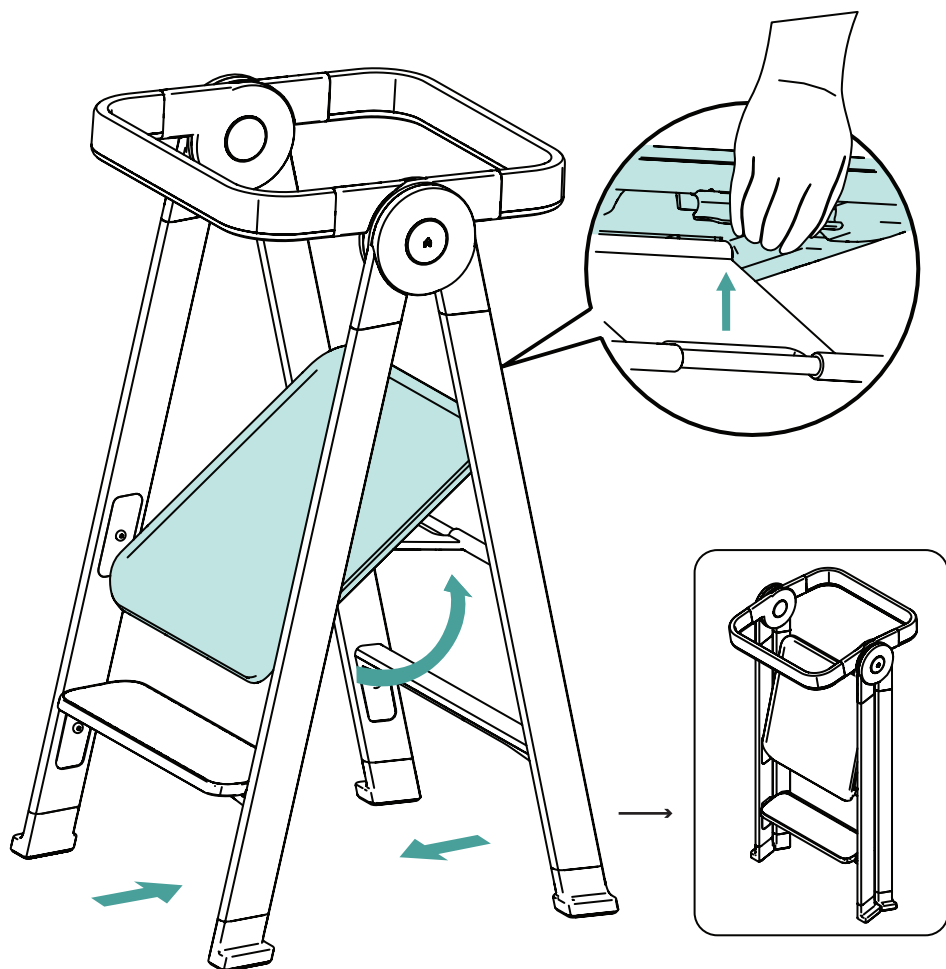


Folding the Kitchen Helper Flex



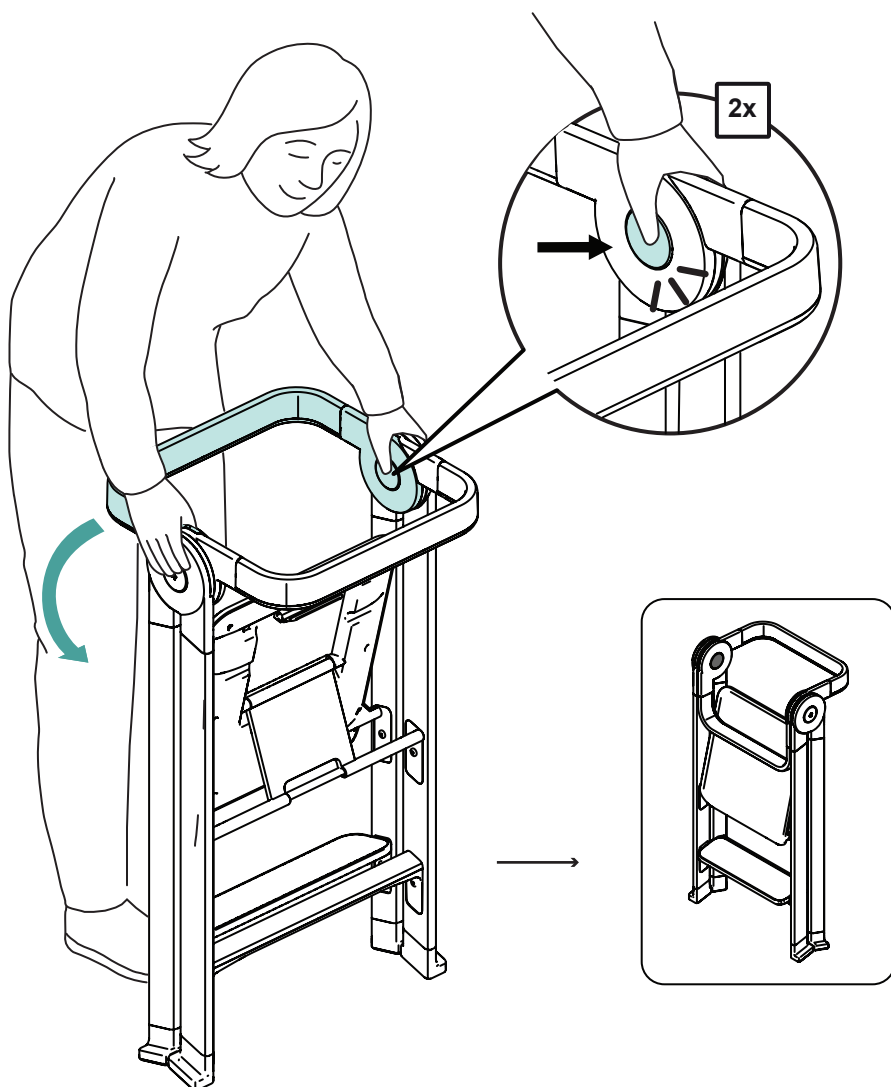
Step 1

Disengage the safety latch and fold up



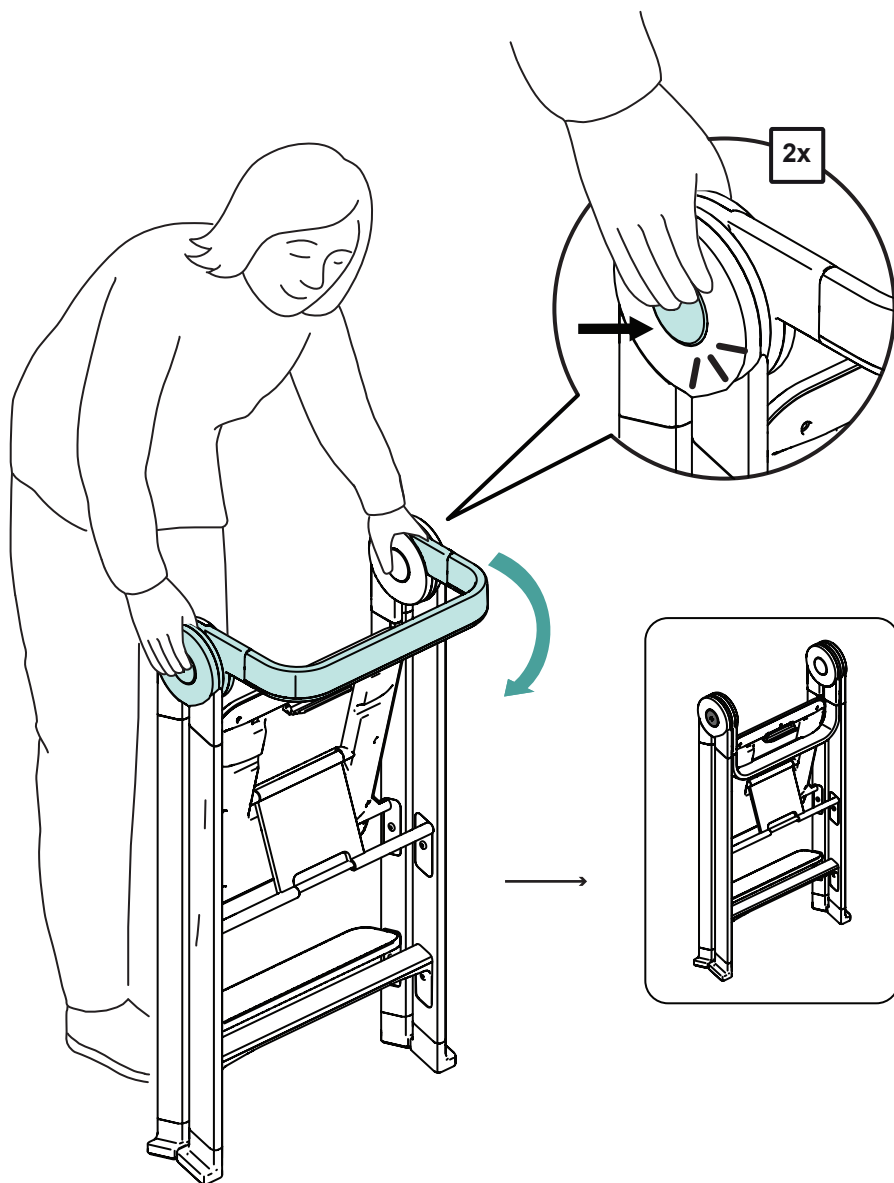
Step 2

With the kitchen helper legs folded in, depress both **INNER** facing buttons at the **SAME TIME** to disengage the rear guard rail. Rotate to the unlocked lower position.

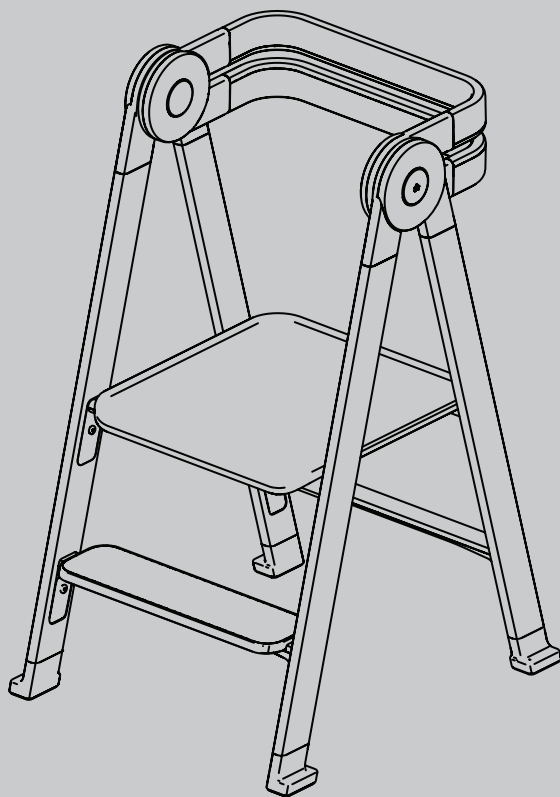


Step 3

Depress both **OUTER** facing buttons at the **SAME TIME** to disengage the front guard rail. Rotate to the unlocked lower position. You Kitchen Helper Flex is now ready to store.



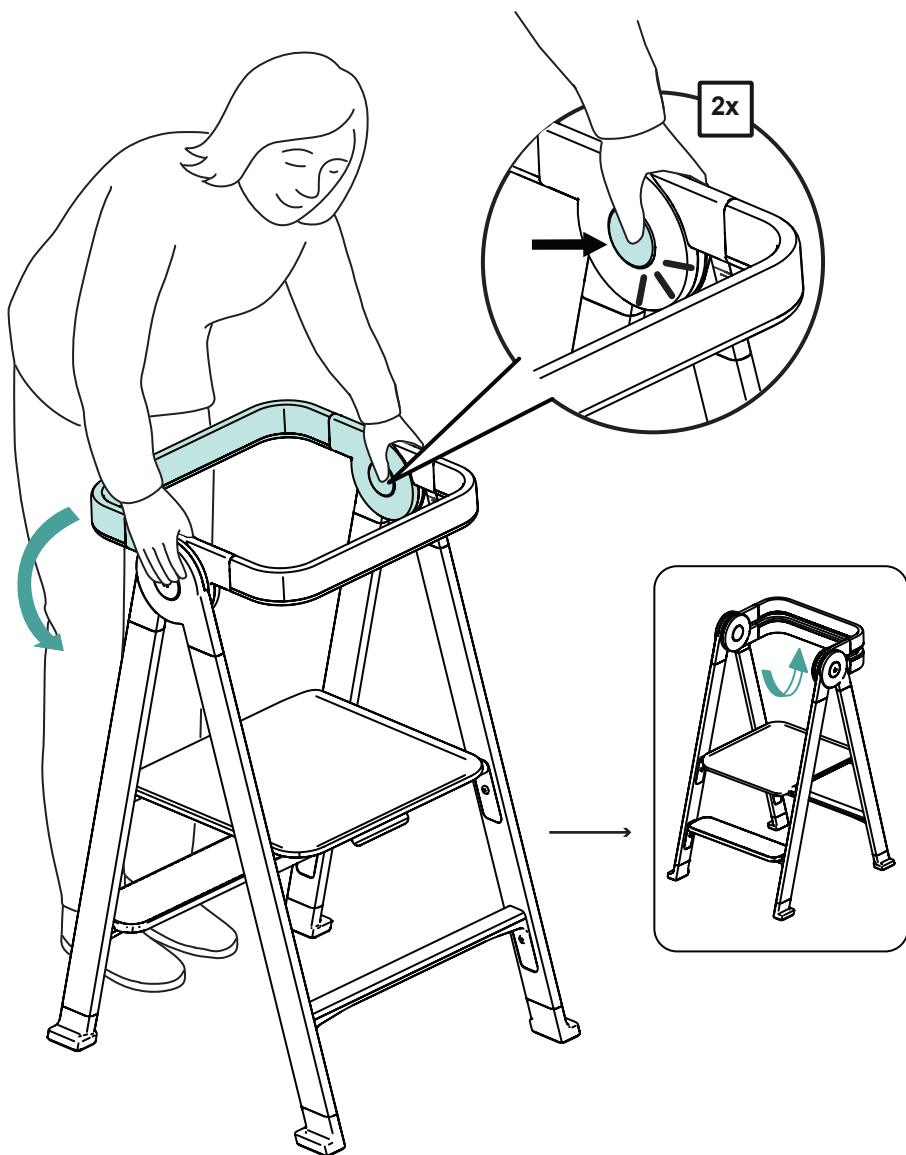
Step stool mode



The Kitchen Helper Flex is designed to operate in an optional step stool mode.

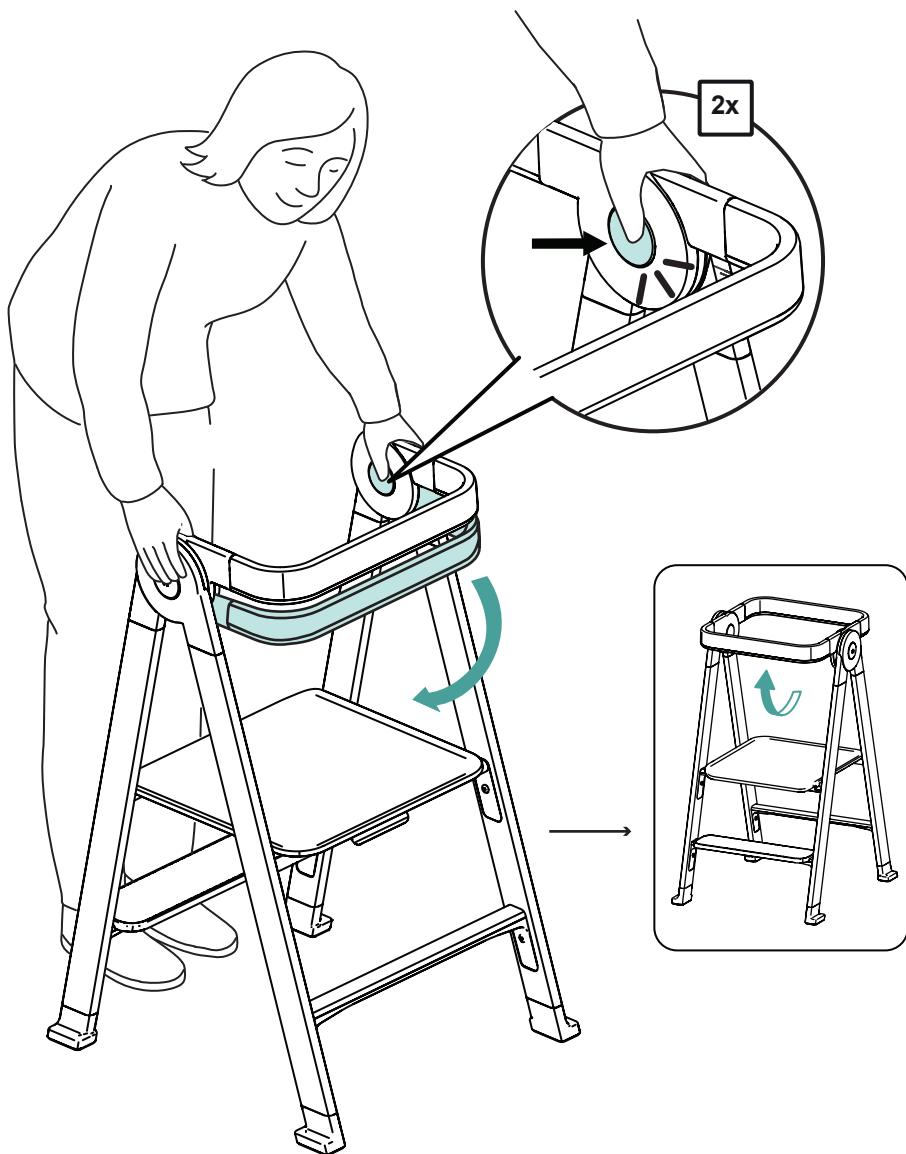
Step 1

From standing tower mode, depress both **INTERIOR** buttons at the **SAME TIME** to disengage the rear guard rail. Rotate 180 degrees into the locked step stool position.

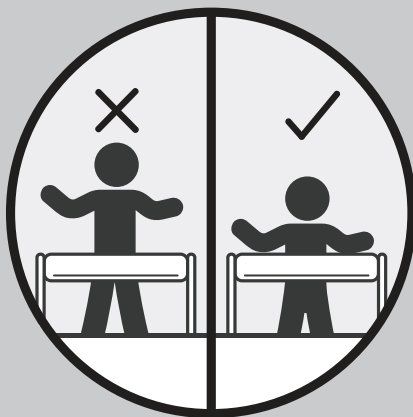


Step 2

From stool mode, depress both **INTERIOR** buttons at the **SAME TIME** to disengage the rear guard rail. Rotate 180 degrees back into the locked standing tower position.

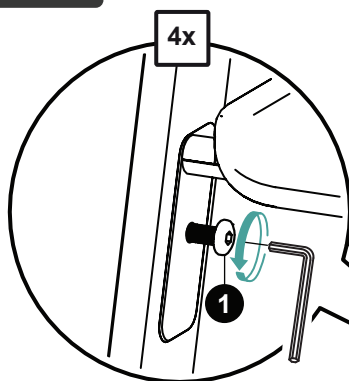


Adjusting The Platform Height

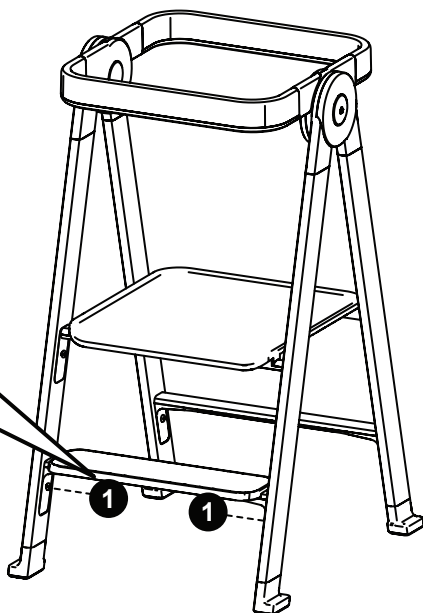


The Kitchen Helper is designed to be used at two different heights based on the age and height of a child. Once a child's waist is above the top of the Kitchen Helper guard rail, please adjust to the lower position.

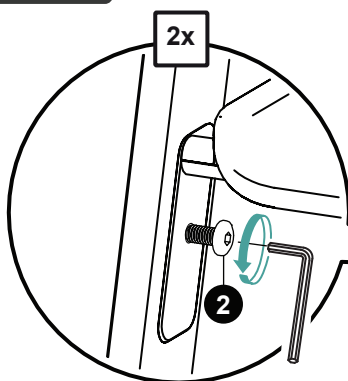
Step 1



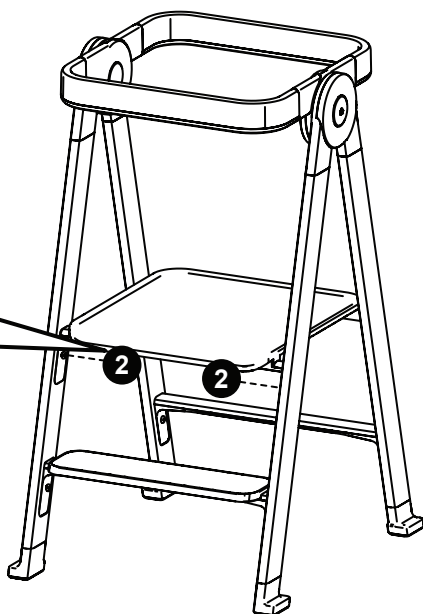
To lower the platform, loosen bolts [1] from the step, but **do not** fully remove.



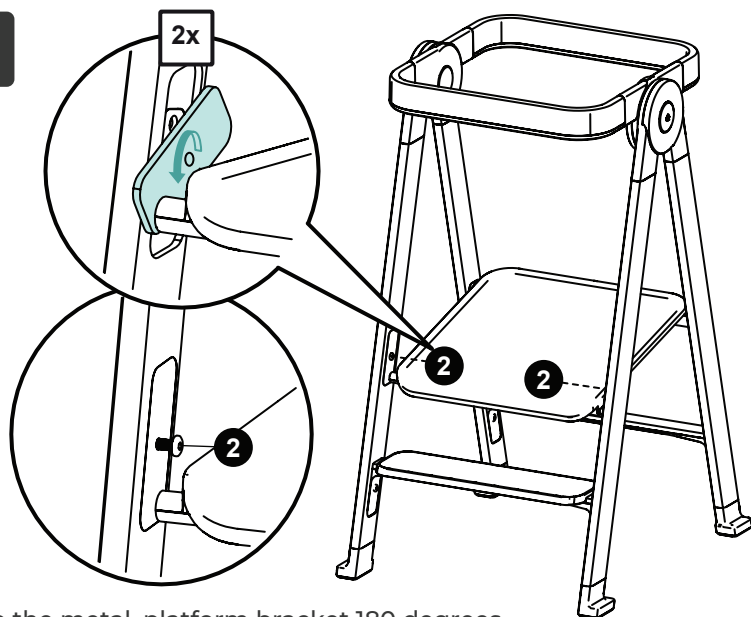
Step 2



Remove bolts [2] from the rear of unit.

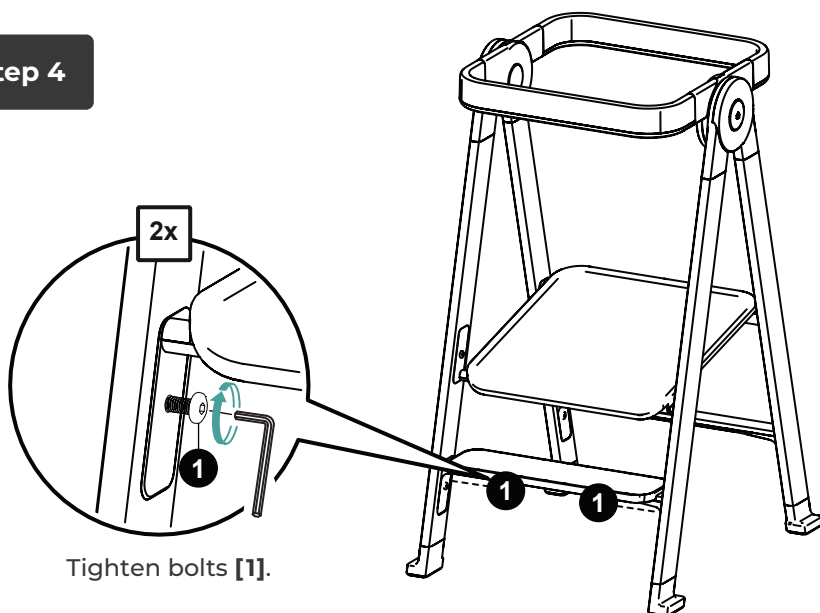


Step 3



Rotate the metal, platform bracket 180 degrees.
Reinsert and tighten the bolts [2].

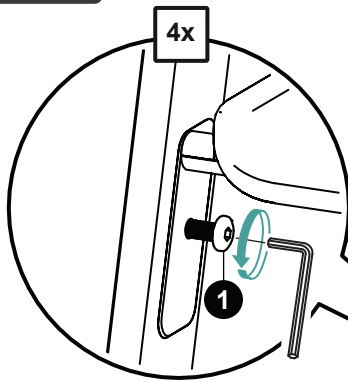
Step 4



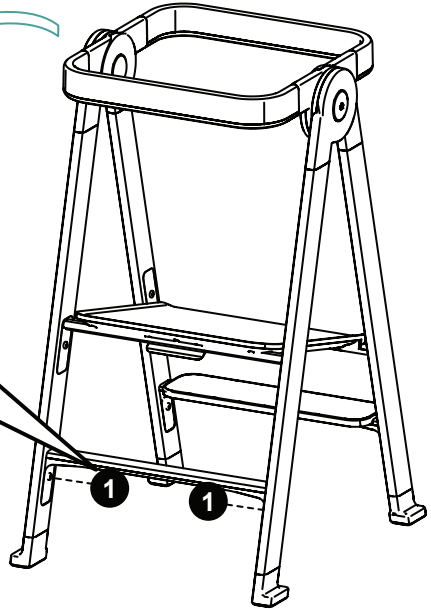
Tighten bolts [1].

Rotate the Flex

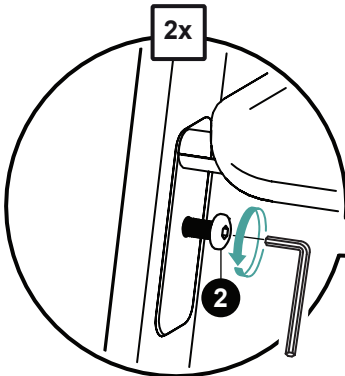
Step 5



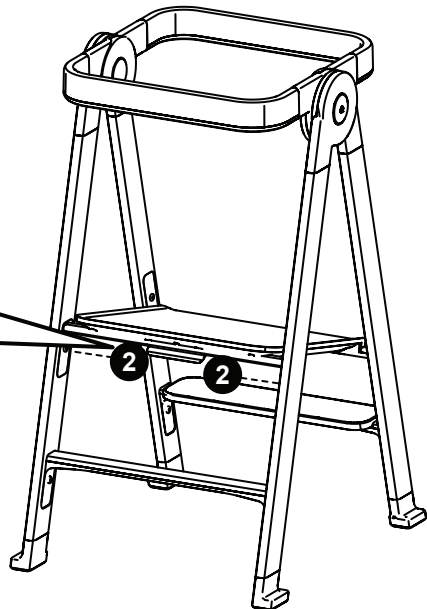
Loosen bolts [1] from the crossbar, but **do not** fully remove.



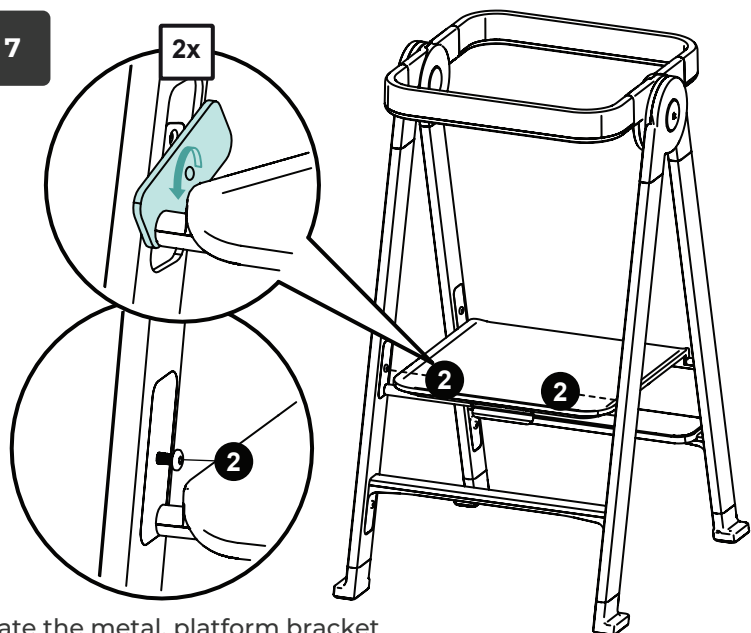
Step 6



Remove bolts [2] from the front of unit.

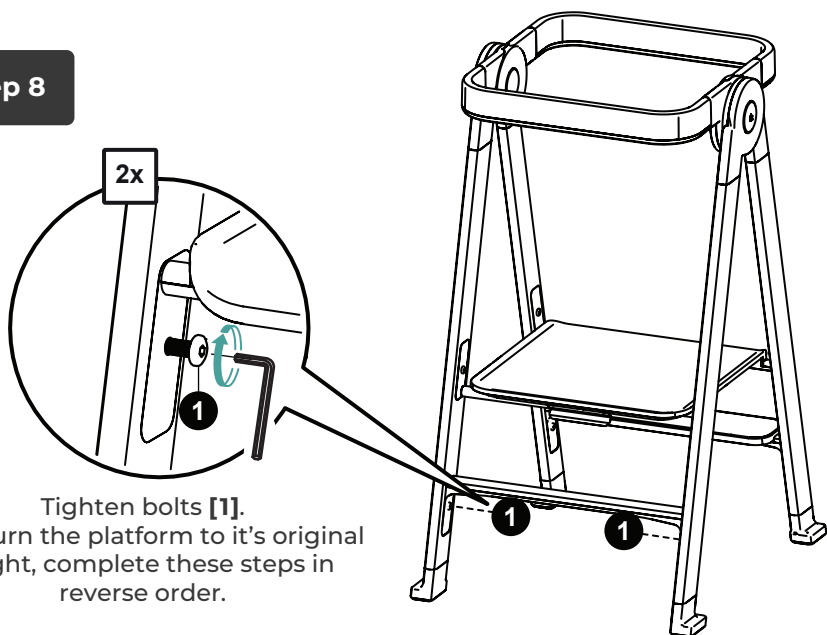


Step 7



Rotate the metal, platform bracket and reinsert the bolts **[2]**.

Step 8



Tighten bolts **[1]**.
To return the platform to its original height, complete these steps in reverse order.



Additional Information

Customer Service

For parts, please contact your dealer. Reference your item name and number and order number.

Five Year Limited Warranty

Your product is warranted to be free from defects in material and craftsmanship for a period of five {5} years. This warranty does not apply to damage caused by abuse, misuse, improper care or altered product. This warranty is provided to the original purchaser with proof of purchase, and is non-transferable.

The manufacturer's liability under this warranty is limited to the repair or replacement of the defective product, at the manufacturer's sole option. This express, limited warranty is granted in lieu of all other warranties, including implied warranties of merchantability and fitness for a particular purpose.

Cleaning Instructions/Maintenance

To clean your product, use mild soap and water on a damp cloth. Do not use window cleaners or cleaning abrasives as they will scratch the surface and could damage the protective coating.

For clear and translucent panels, use a mild solution of vinegar and water. Keep supplied hardware and tools with your product for future reference. Periodically check your product and tighten hardware if necessary.

