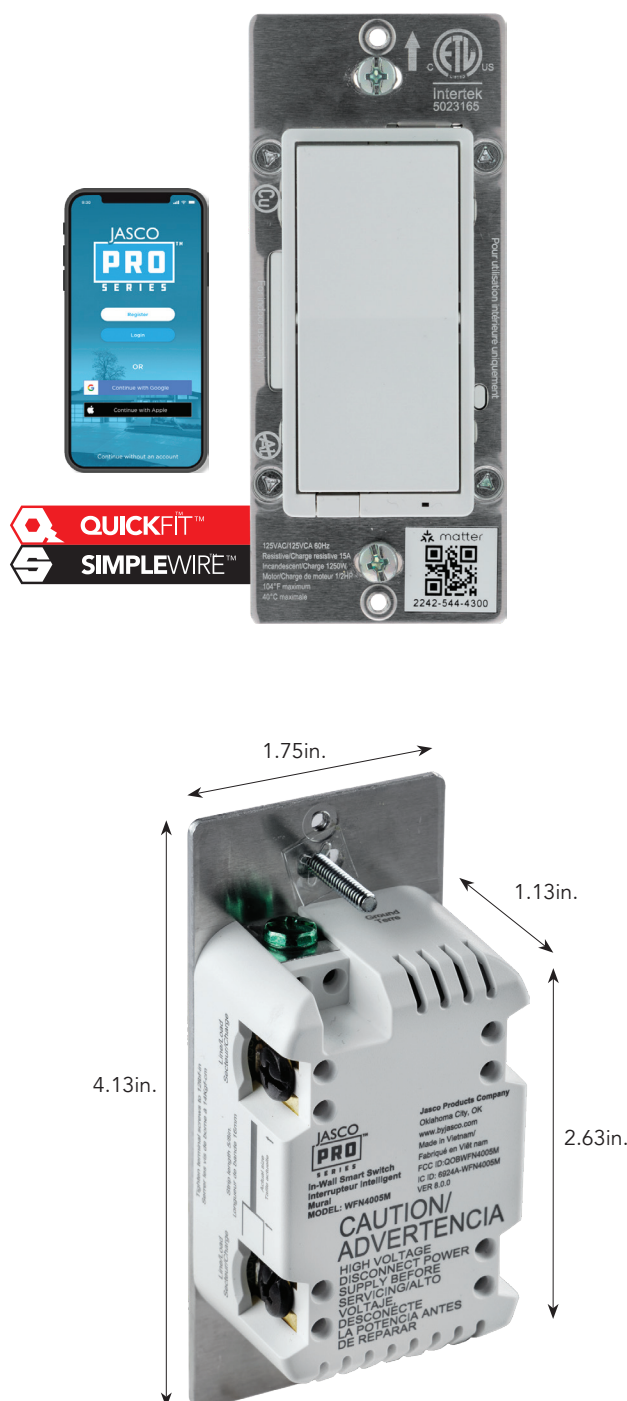


# JascoPro Series Wi-Fi In-Wall Smart Switch



## Specifications

**Power:** 120VAC, 60Hz **Signal Frequency:** 2.4GHz

**Maximum Load:** 1200W Incandescent,  
1/2HP Motor 1800W (15A Resistive)

**Range:** Up to 100 feet from router

**Operating Temperature:** 32-104° F (0-40° C)

**Warranty:** 10-year limited, nontransferable product warranty

**Requires neutral wire. Switch must be mounted indoors**

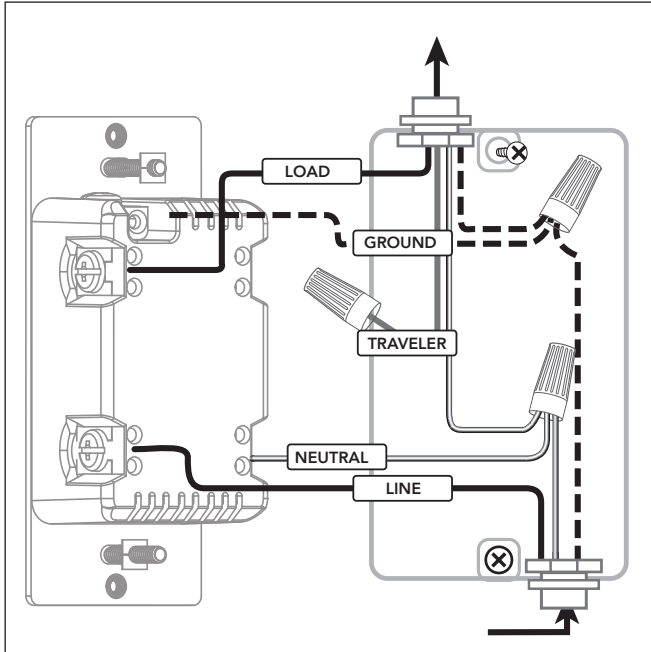
## Design Features

- QuickFit – improved components reduce the housing depth by up to 20% compared to previous Wi-Fi models and eliminated the need for heat tabs
- SimpleWire – auto-sensing line-load terminals support fast installation by detecting line and load wires and configuring the switch accordingly. Dual ground ports support daisy-chaining in multi-switch setups
- Requires 2.4GHz Wi-Fi – compatible with single-, dual- and tri-band routers
- Free JascoPro Series app – no hub required
- Effortless Wi-Fi setup and control
- Mobile or voice control – works with Amazon Alexa and Google Assistant
- Turn ON/OFF the connected device manually or with the JascoPro Series app
- May be used in single-pole installations and with up to four JascoPro Series add-on switches or an existing 3-way switch
- Works with all LED, CFL, incandescent and halogen bulbs
- Blue LED indicates automatic or manual paring mode status
- LED can serve as status indicator, guide light, always ON or disabled
- Can be included in multiple groups, scenes and automations
- Double-tap and triple-tap scene activation directly from device
- Smart bulb mode — allows use of smart bulb in connected fixture by retaining communication to and status of the light while supporting tap-command scene control
- Emergency Flash – flashing lights indicate location to first responders
- Screw terminal installation – requires wiring connections for line (hot), load, neutral and ground. Traveler wire required for multi-switch installation
- Over-the-air (OTA) updatable – firmware and app updates ensure the latest features are always available
- Uses a standard rocker wallplate – not included
- In-line traveler circuit protection

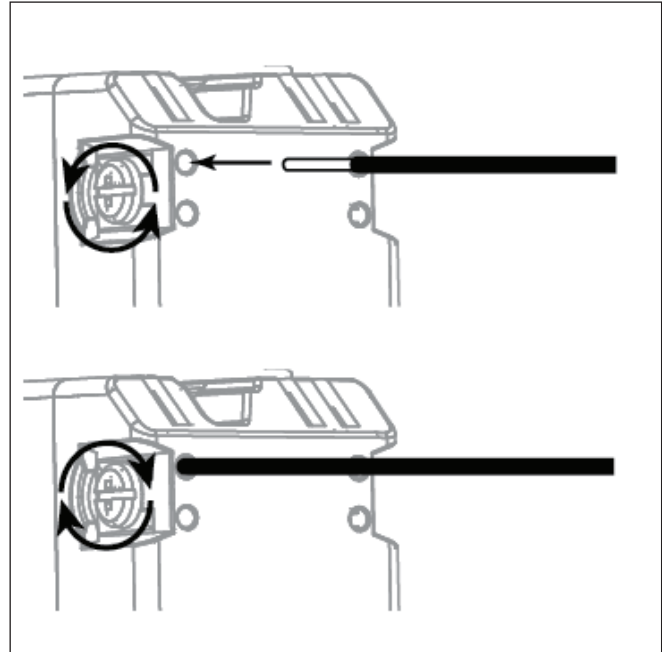
## Installation Recommendations:

- Insert wire into port and tighten screw – do not wrap wire around screw
- Indoor use only
- Wallplates sold separately
- Trilingual Instruction manual – English, French, Spanish

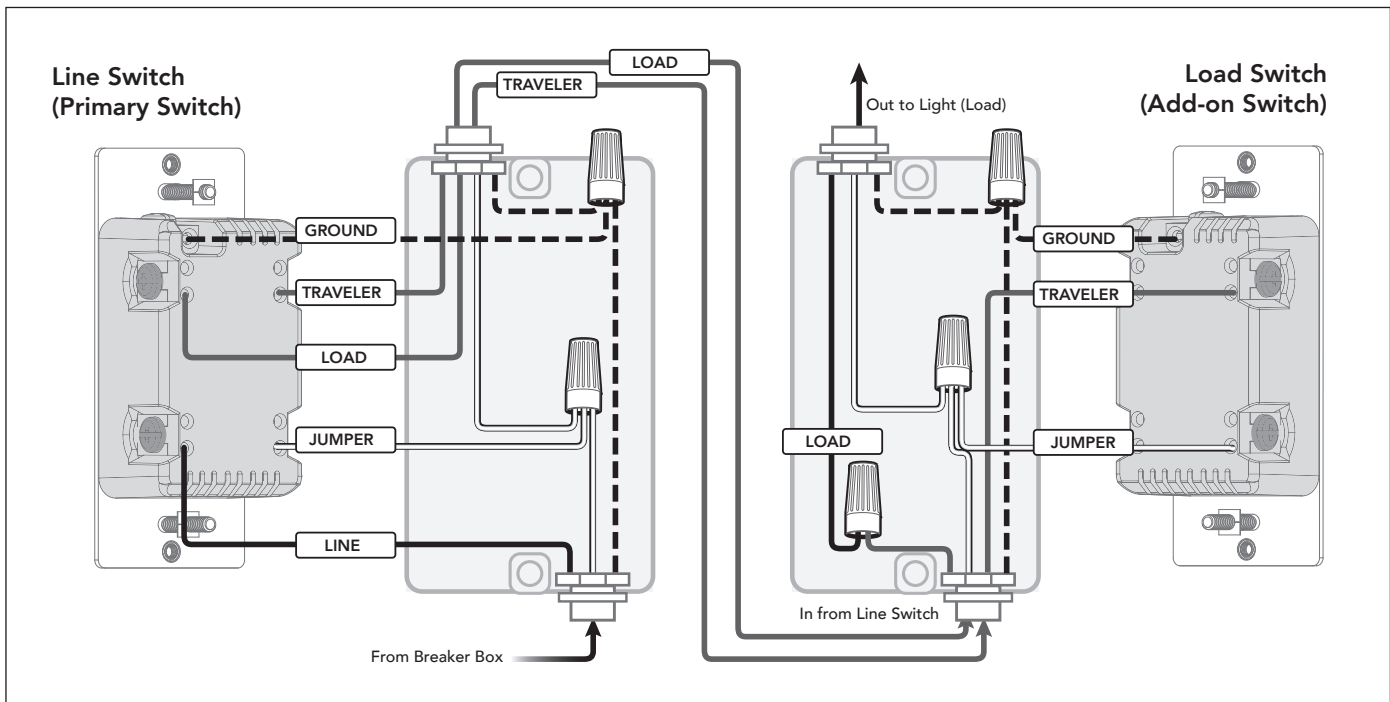
## Single-Location Wiring



## Space-Saving Screw Terminals



## Multi-Location Wiring



## Certifications &amp; Compliances



Compliances, specifications and availability are subject to change without notice.

**JASCO®** [www.byjasco.com](http://www.byjasco.com)

Distributed by Jasco Products Company LLC  
10 E. Memorial Rd., Oklahoma City, OK 73114.  
Questions? Contact our U.S.-based dedicated support at  
1-833-981-0170, M-F, 7AM-8PM Central Time.

©Jasco 2024