

Installation Instructions

Bidet Seat

Record your model number:

Noter le numéro de modèle:

Anote su número de modelo: _____

Français, page 11

Español, página 20

KOHLER[®]

1548847-2-A

Thank You for Choosing KOHLER

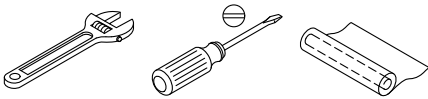
Need help? Contact our Customer Care Center.

- USA/Canada: 1-800-4KOHLER (1-800-456-4537) Mexico: 001-800-456-4537
- Service parts: [kohler.com/serviceparts](https://www.kohler.com/serviceparts)
- Care and cleaning: [kohler.com/clean](https://www.kohler.com/clean)
- Patents: [kohlercompany.com/patents](https://www.kohlercompany.com/patents)

Warranty

This product is covered under the **KOHLER® One-Year Limited Warranty**, found at [kohler.com/warranty](https://www.kohler.com/warranty). For a hardcopy of warranty terms, contact the Customer Care Center.

Tools and Materials



Plastic Wrap

Before You Begin



WARNING: Risk of scalding. High water temperature can cause severe burns. Do not connect this device to a water supply with a maximum temperature above 104°F (40°C).



CAUTION: Risk of property or product damage. Pushing or pulling on the water connection may cause water leakage.



CAUTION: Risk of product damage. Do not apply excessive force to the spray wands.

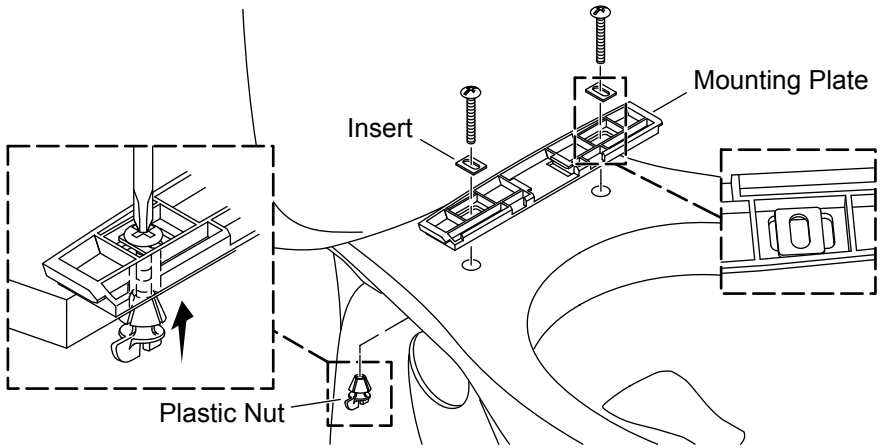


CAUTION: Risk of product damage. In areas where water may freeze in the pipes, make arrangements to keep the pipes warm. Any water remaining in the seat may freeze during winter storage. Allow the unit to warm to room temperature before reinstalling or using.

Follow all local plumbing and building codes.

Connect the seat to a cold water supply of drinking quality with a pressure of 20 psi (139 kPa) - 80 psi (551 kPa).

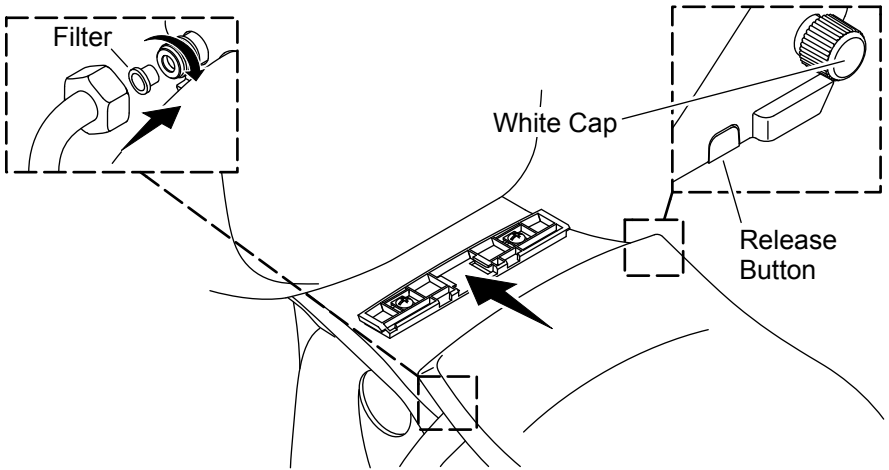
1. Install the Mounting Plate



NOTE: DO NOT thread the plastic nuts onto the bolt. The plastic nuts must be pushed onto the bolt and firmly seated in the mounting holes to tighten.

- Position the mounting plate over the mounting holes on the bowl.
- Position the inserts in the grooves on the mounting plate as shown.
- Insert the bolts through the inserts and into the mounting holes.
- While holding the bolts in place, push a plastic nut onto each bolt as far as possible until the plastic nut firmly seats into the mounting hole.
- Do not fully tighten at this time.

2. Install the Seat



Position the Seat

- Slide the seat onto the mounting plate until you feel the seat snap into place.
- Check the seat position. Adjust the position if needed.

Adjust the Seat

- Remove the seat by pressing the release button and sliding the seat forward.
- Reposition the mounting plate as needed.

Secure the Seat

- Securely tighten the mounting plate bolts and nuts.
- Slide the seat onto the mounting plate until you feel the seat snap into place.

Attach the Water Line

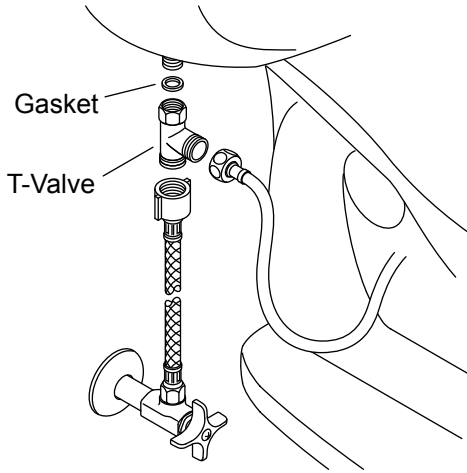
IMPORTANT! Use only the water line included with the seat. Using a different hose may damage the seat components.

IMPORTANT! Verify that the white cap is installed on the seat water inlet that is on the opposite side of the seat hose.

NOTICE: Use care to avoid cross-threading or overtightening the connections. Use an adjustable wrench to tighten one-quarter turn past hand-tight.

- Verify that the filter is installed. Install if needed.
- Connect the water line to the seat. Do not overtighten.

3. Connect the Water Supply

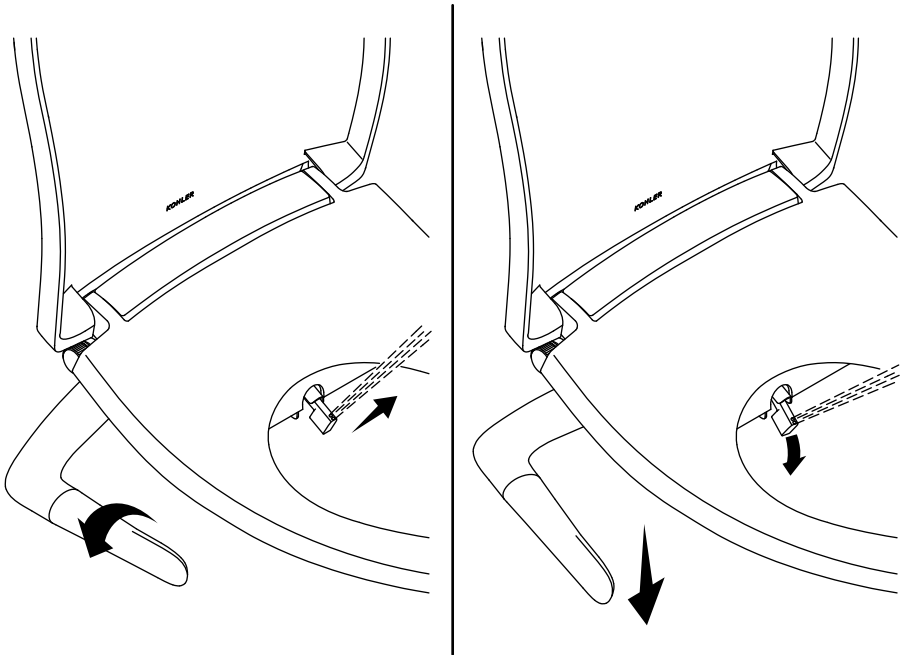


CAUTION: Risk of property or product damage. Pushing or pulling on the water connection may cause water leakage.

NOTICE: Use care to avoid cross-threading or overtightening the connections. Use an adjustable wrench to tighten one-quarter turn past hand-tight.

- Verify that the gasket is installed inside the T-valve.
- Connect the T-valve to the water inlet on the toilet tank.
- Connect the seat water line to the T-valve.
- Connect the supply hose to the T-valve.
- Connect the supply hose to the supply stop.
- Turn ON the water supply.
- Check all connections for leaks, and make adjustments as needed.

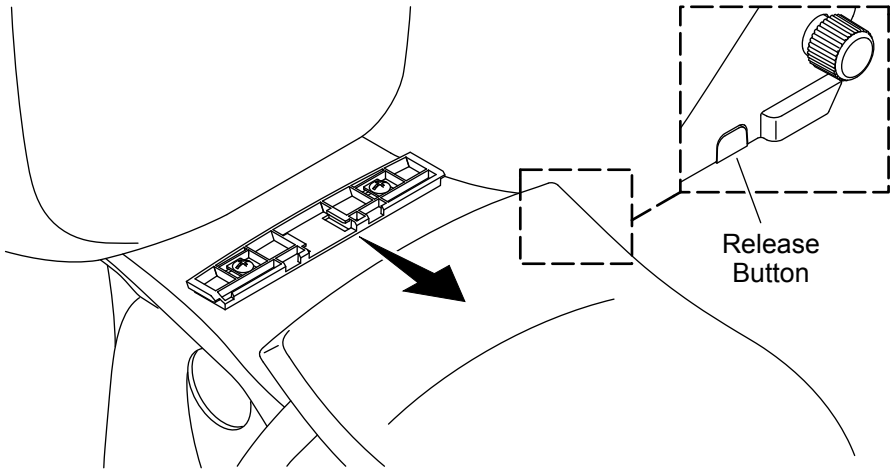
Operation



IMPORTANT! Water can spray when no one is sitting on the seat. Do not activate the water until seated.

- To activate the spray wand:** Twist the handle away from you.
- To control the water flow:** Twist the handle away from you to increase the flow, toward you to decrease the flow.
- To adjust the spray wand position:** Push the handle down until the desired position is found.
- To turn the spray wand off:** Twist the handle toward you until the handle stops.

Removing the Seat



IMPORTANT! When removing the seat for cleaning, take care to avoid tension on the hose connections.

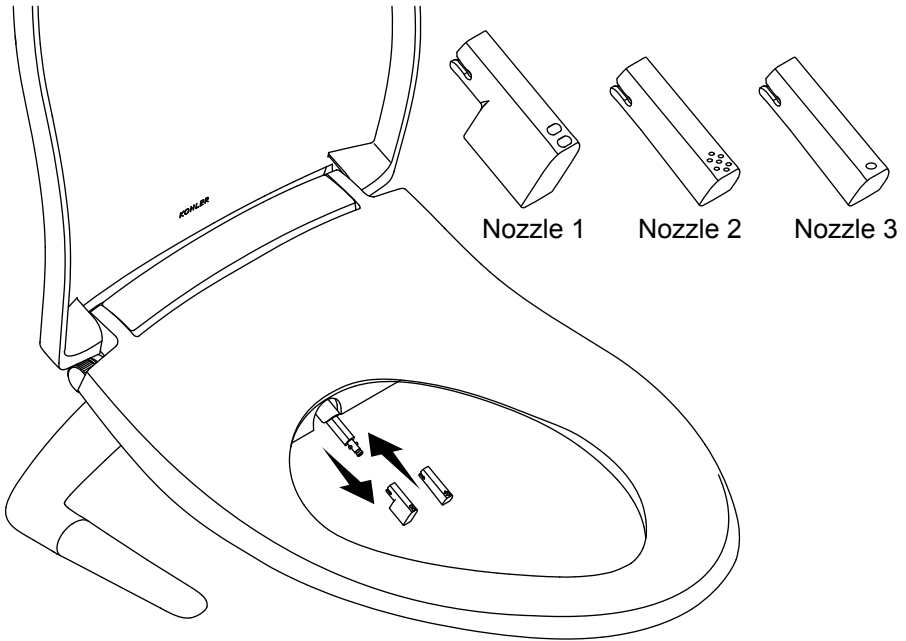
For Cleaning

- Press and hold the release button.
- Slide the seat forward to remove. Avoid tension on the hose connections.
- Clean the area as needed.
- To reinstall, slide the seat onto the mounting bracket.

For Servicing

- Turn OFF the water at the supply stop.
- Flush the toilet to relieve water pressure.
- Disconnect the water supply hose from the T-valve.
- Press and hold the release button.
- Slide the seat forward to remove.
- When servicing is complete, reinstall the seat and reconnect all components.

Nozzle Options



NOTE: Two additional nozzles are provided. Each has a different spray intensity. Choose the nozzle that best suits your needs.

- Nozzle 1** - Comes installed. Mid level intensity.
- Nozzle 2** - Soft spray. For users who prefer a gentle spray or homes with high water pressure.
- Nozzle 3** - Intense spray. Best for installations with low water pressure.

Changing the Nozzles

- Manually pull the wand out.
- Firmly grip the wand, then pull the nozzle to remove.
- Select the replacement nozzle.
- With the outlet holes facing up, grasp the wand and firmly push the replacement nozzle into place.