



BERRY COMPLIANT CWGS HEAVY INSULATION MITTEN



USA
(800) 222-4296

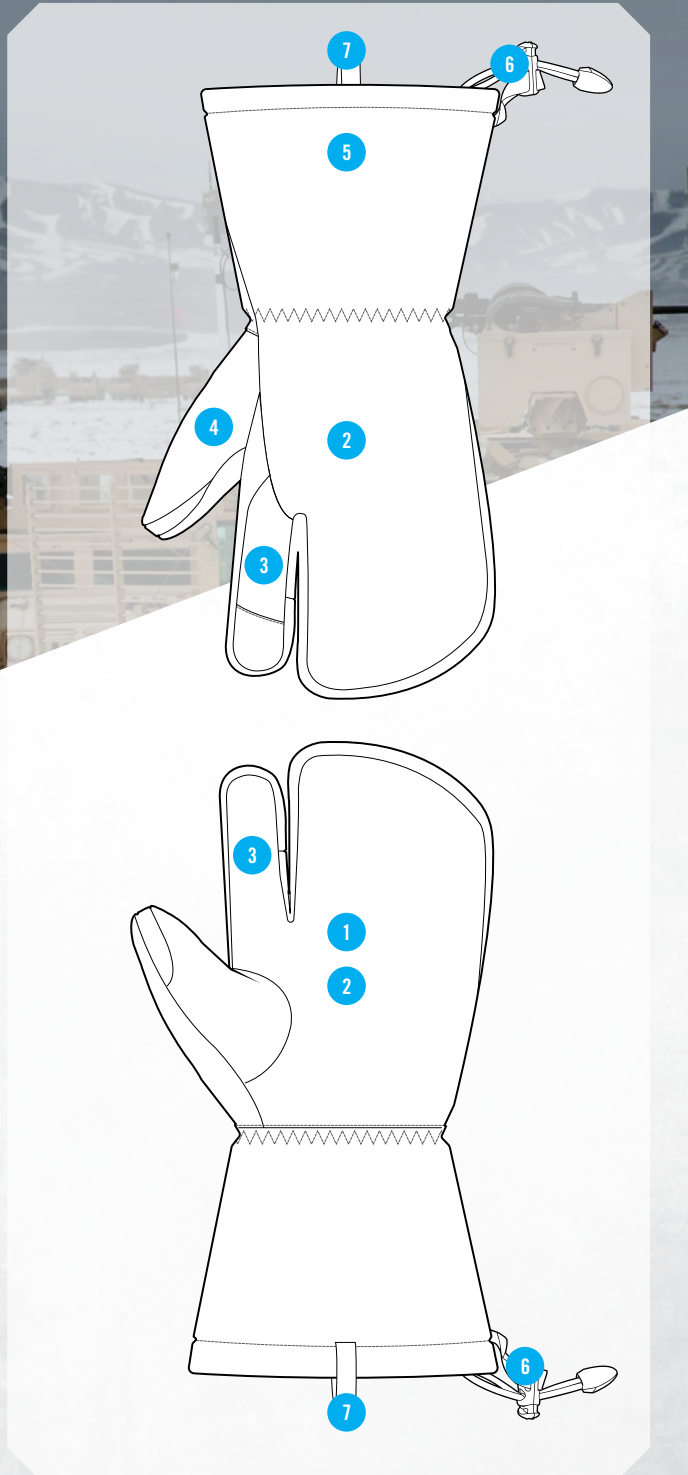
Spain
+34 93 628 22 00

Canada
(877) 278-5822

Australia
1 300-731 336

Japan
03 4590 0066

MECHANIX WEAR LLC
www.mechanix.com



TACTICAL COLD WEATHER GLOVE SYSTEM

Combining Tactical grade Durahide™ Leather, multiple layers of insulation, separate thumb and index finger sheaths and a carabiner cuff loop design, the Heavy Insulation Mitten has been thoughtfully crafted to handle the harshest conditions.

FEATURES

- 1 Tactical grade Durahide™ Leather ensures maximum strength and durability in harshest conditions.
- 2 Multiple layers of insulation for maximum warmth and comfort.
- 3 Separate thumb and index finger increase dexterity.
- 4 Nose and sweat wipe on thumb.
- 5 Wide opening ensures coverage over jacket and keep elements out.
- 6 Cordloc closure delivers a fast-pull secure fit and an easy quick release.
- 7 Carabiner loop design secures gloves and reduces water and debris from entering the glove during storage.



INTENDED USES

- Military
- Law Enforcement
- Shooting Sports
- Maintenance Repair Operations

SIZE	S-008	M-009	L-010	XL-011	XXL-012
COLOR	CW6SHI-B72-COYOTE				

BERRY COMPLIANT CWGS HEAVY INSULATION MITTEN

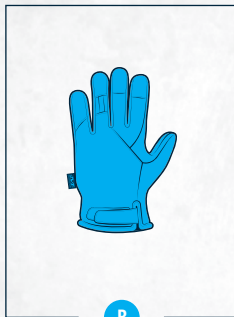
MULTI-LAYER INSULATION

The Mechanix Wear® Cold Weather Glove System utilizes a multi-glove design to easily provide highly adaptable, customizable protection against the full range of winter weather conditions.



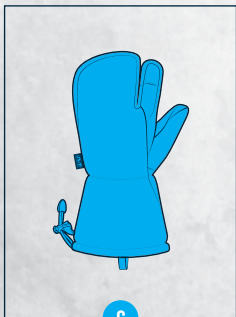
A

KNIT LINER



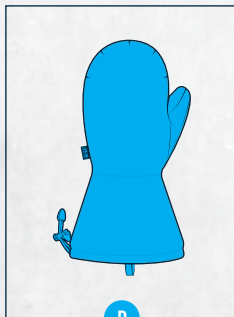
B

INTERMEDIATE LAYER



C

HEAVY INSULATION MITTEN



D

OUTER SHELL MITTEN

5 PAIRING OPTIONS AVAILABLE

Modularity / Configurable to Individual Needs

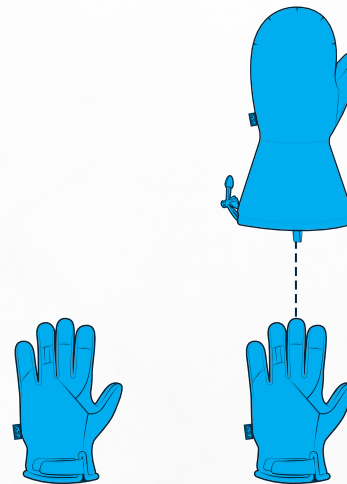
Designed to Meet the Requirements of the US Army From 40°F to -40°F

Moisture managing / Wicking Insulation

Water Resistant

INTERMEDIATE
COMBINATION

Up to **2 LAYERS** of insulation

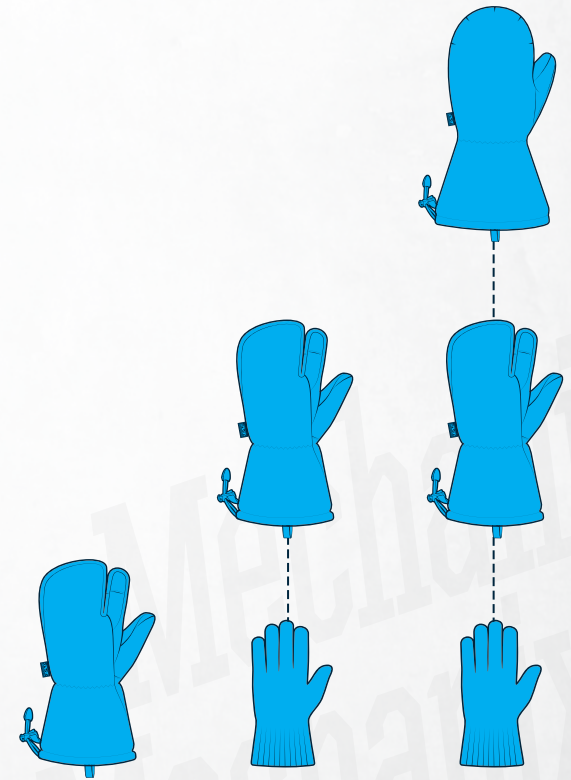


B

B D

HEAVY INSULATION
COMBINATION

Up to **3 LAYERS** of insulation



C

A C

A C D