



TECHNICAL INFORMATION



V2 Slight Variation



Ready Ship



Recommend offset pattern $\leq 33\%$



DCOF: > 0.42



Frost Resistant



Water Absorption: $\leq 0.4\%$



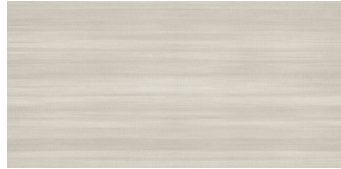
Made in USA

COLORS

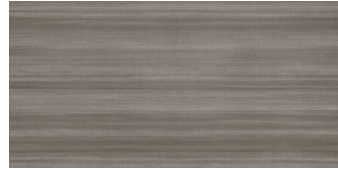
Arku



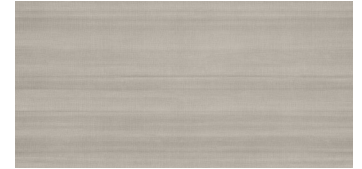
White
MLS BSWH



Warm White
MLS BSWG



Charcoal
MLS BSCH



Cool Grey
MLS BSCG

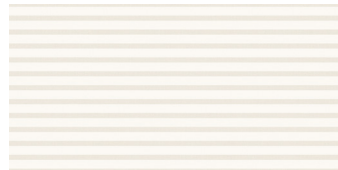
Saori



Light Grey
MLS BSLG



Indigo
MLS BSIN



Cream
MLS BSCR



Charcoal
MLS BSCH

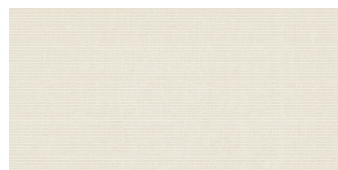
Telares



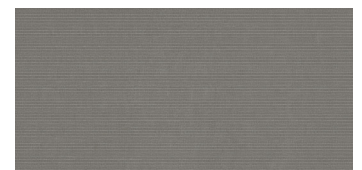
Light Grey
MLS BSLG



Indigo
MLS BSIN



Cream
MLS BSCR



Charcoal
MLS BSCH

Decorative



Kunano
MLS BSKN



Tiles, Mosaic and Trim*

SIZE	ACTUAL	THICKNESS	FINISH
24" x 48" Arku Rectified	24" x 48"	8mm	Matte/Natural
24" x 48" Saori Rectified	24" x 48"	8mm	Matte/Natural
24" x 48" Telares Rectified	24" x 48"	8mm	Matte/Natural
24" x 24" Saori Rectified	24" x 24"	8mm	Matte/Natural
12" x 24" Arku Rectified	12" x 24"	8mm	Matte/Natural
12" x 24" Saori Rectified	12" x 24"	8mm	Matte/Natural
12" x 24" Telares Rectified	12" x 24"	8mm	Matte/Natural
12" x 12" Decorative Rectified	12" x 12"	8mm	Matte/Natural
12" x 12" Saori Rectified	12" x 12"	8mm	Matte/Natural

* Not all sizes are available in all colors and finishes.

Performance Characteristics

Breaking Strength	≥ 300 lbf
Chemical Resistance	Resistant
DCOF	> 0.42
Deep Scratch Resistance - Unglazed	N/A
Frost Resistance	Resistant
Mohs Hardness - EN101	N/A
Water Absorption	≤ 0.4%
Certifications	N/A
Country of Origin	USA
Shade Variation Code	V2

Application**

		WALL	FLOOR
Interior	Residential	•	•
Interior	Commercial	•	•
Interior	Heavy Commercial	•	
Exterior	Residential/Commercial	•	

** These recommendations are not defined by ANSI Standards

