



**XOU24BWDDGBS**

24" BLACK STAINLESS STEEL COMBO BEVERAGE  
CENTER & WINE COOLER

## BLACK STAINLESS WINE BEVERAGE COMBO



**XOU24BWDDGBS**

- Tri-Color LED Lighting
- Secure Lock For Each Door
- Icy Cold Beverages & Wine Storage In One Convenient Unit
- Flush Undercounter Installation Design

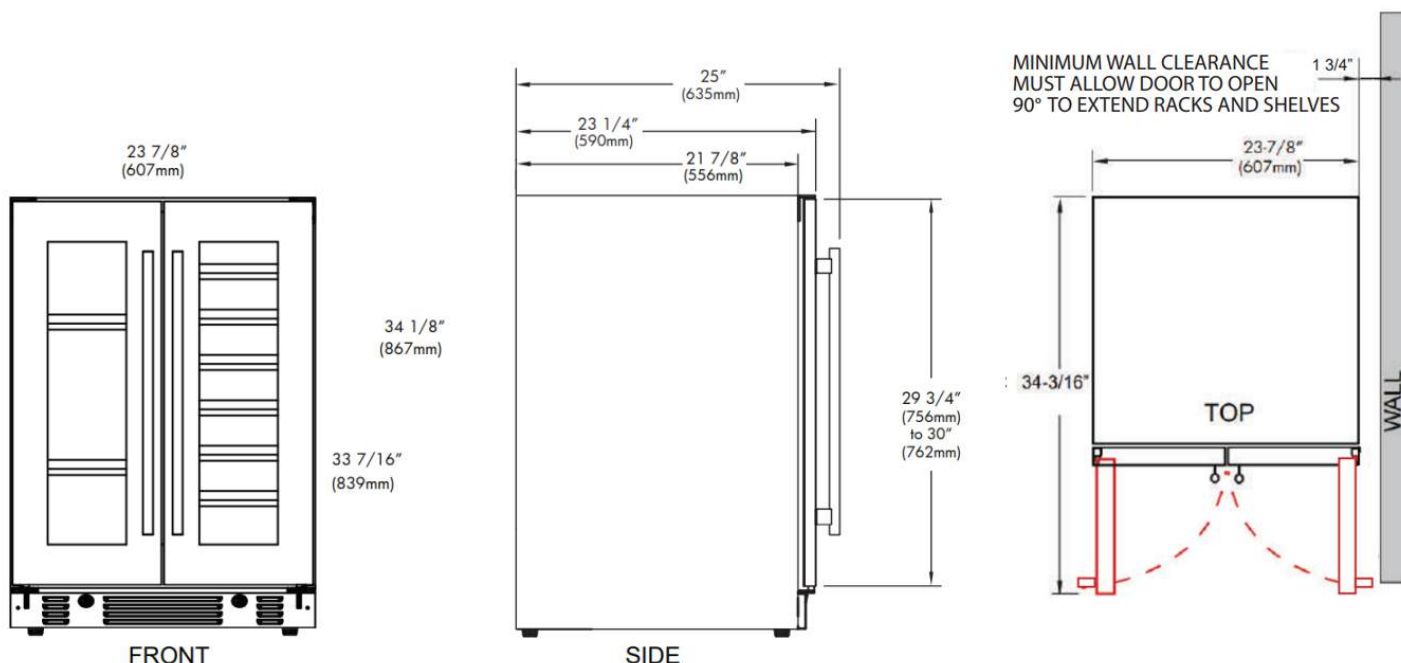
### 24" BLACK STAINLESS UNDERCOUNTER COMBO UNIT

THE ULTIMATE IN CONVENIENT ENTERTAINING -YOUR FAVORITE VINTAGES AND ICY COLD BEVERAGES READY TO SERVE, JUST WHERE YOU WANT THEM

Your XO French Door Combo Unit has the ability to store both wine at 41° to 64° F ready to serve and icy cold beverages from 34° to 50° F in the same compact system. Designed to fit undercounter and wherever your life takes you.

WORLD CLASS SERVICE | COMPREHENSIVE WARRANTIES

OUR LASTING COMMITMENT TO YOU



### FEATURES

#### CAPACITY

Shelves and racks extend halfway and hold:  
(49) 12oz cans at 34° to 50° F  
(21) 750ml bottles at 41° to 64° F

#### FEATURES

- Secure door lock
- Library quiet 39 dBA operation
- Elegant tri-color interior illumination
- Intuitive digital touch controls
- 6-1/2' Power Cord with low profile 90 flat plug
- Low E Glass blocks harmful UV light
- Alarm Functions
- Energy Saver and Sabbath Mode

### SPECIFICATIONS

**ELECTRICAL** 120V 60HZ 4.35 AMP\*

**DIMENSIONS** H 34 1/8"  
W 23 7/8"  
D 23 1/4"

**ROUGH IN** H 34 1/4" min  
W 24"  
D 24"

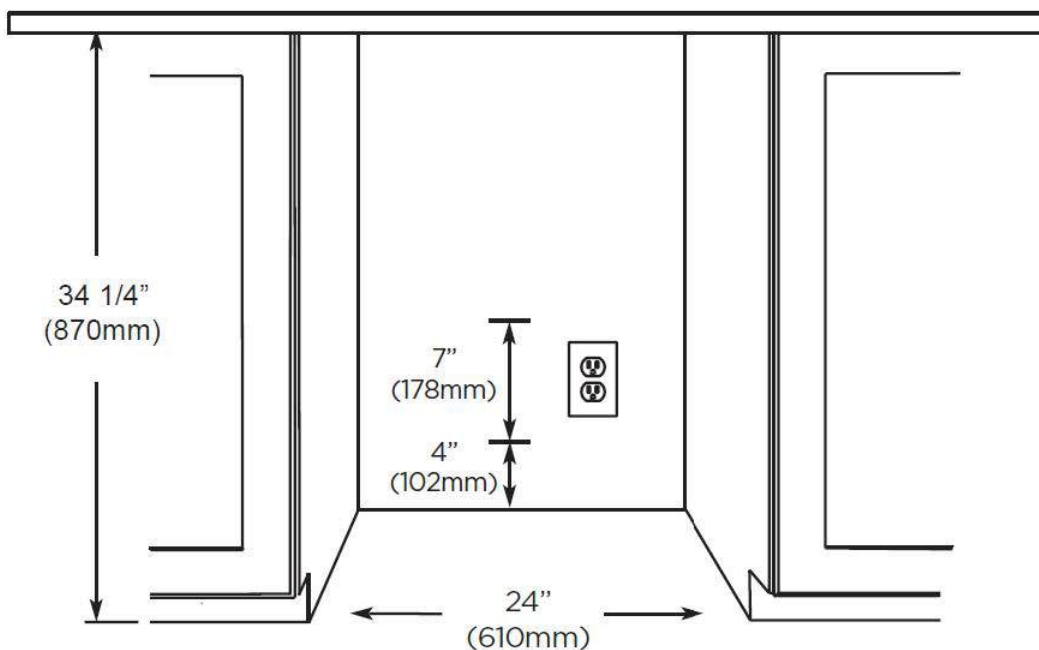
**REFRIGERANT** R600A

**WEIGHT** 149 lbs



DESIGNER Handle  
Included

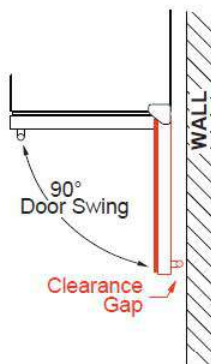
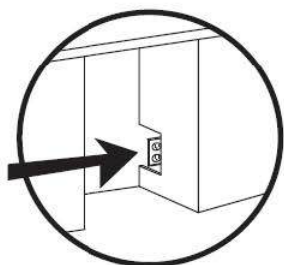
### ROUGH IN DIMENSIONS



ALL XO UNDERCOUNTER  
UNITS ARRIVE PRE-WIRED  
WITH LOW PROFILE PLUGS  
FOR EASY INSTALLATION



NEED MORE SPACE -  
CUT INTO AN ADJOINING  
CABINET TO REACH AN  
OUTLET THERE



WHEN INSTALLING WITH  
THE HINGE SIDE NEXT TO A WALL -  
LEAVE ENOUGH CLEARANCE GAP  
FOR CABINET HANDLES

DOOR MUST BE ABLE TO OPEN  
A MINIMUM OF 90°.

IF THE DOOR CANNOT OPEN FULLY  
YOU CANNOT EXTEND THE SHELVES.