



**BERRY COMPLIANT CWGS
OUTER SHELL
MITTEN
REVERSIBLE**

REVERSIBLE



USA
(800) 222-4296

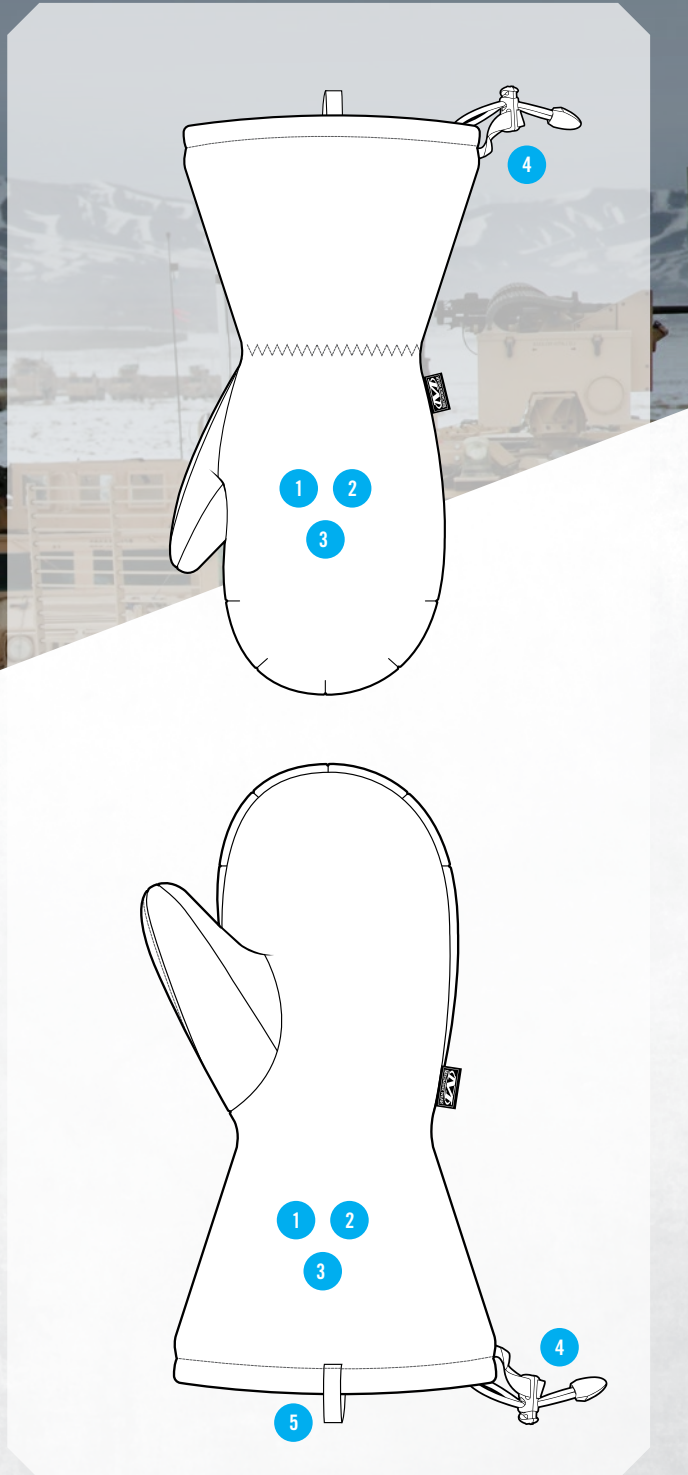
Spain
+34 93 628 22 00

Canada
(877) 278-5822

Australia
1 300-731 336

Japan
03 4590 0066

MECHANIX WEAR LLC
www.mechanix.com



TACTICAL COLD WEATHER GLOVE SYSTEM

The Outer Shell Mitten of the Mechanix Wear® Cold Weather Glove System provides superior protection, comfort and ease of use thanks to its water-resistant construction, Polartec® Alpha® insulation, and fast-pull-secure-fit cordLoc feature.

FEATURES

- 1** Durable Water Repellant treated 70 denier construction protects from the elements and easily compacts for storage and transportation.
- 2** Polartec® Alpha® insulation in between the reversible colorways keeps hands warm and retains heat for extended use.
- 3** Reversible shell to help amplify or minimize visibility.
- 4** Cordloc closure delivers a fast-pull secure fit and an easy quick release.
- 5** Carabiner loop for quick storage

INTENDED USES

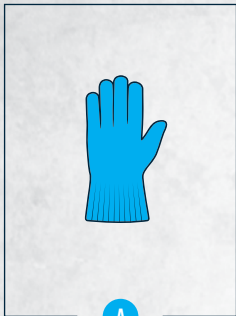
- Military
- Law Enforcement
- Shooting Sports
- Maintenance Repair Operations

SIZE	S-008	M-009	L-010	XL-011	XXL-012
COLOR	CWGSRI-B72 TAN/WHITE				

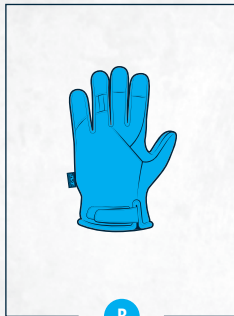
BERRY COMPLIANT CWGS OUTER SHELL MITTEN

MULTI-LAYER INSULATION

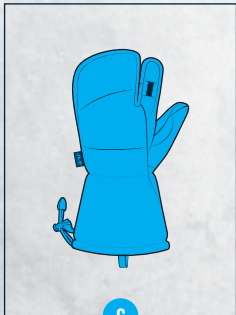
The Mechanix Wear® Cold Weather Glove System utilizes a multi-glove design to easily provide highly adaptable, customizable protection against the full range of winter weather conditions.



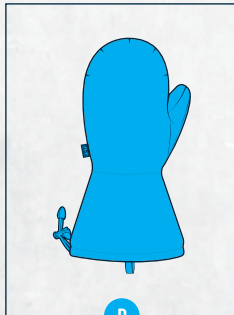
A
KNIT LINER



B
INTERMEDIATE LAYER



C
HEAVY INSULATION MITTEN



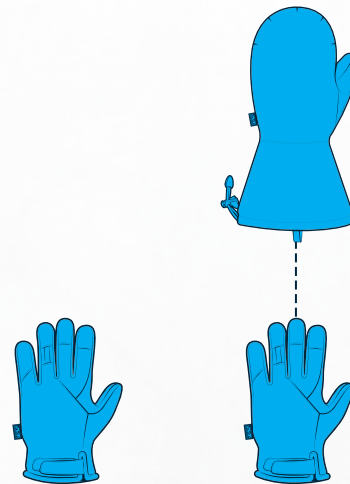
D
OUTER SHELL MITTEN

5 PAIRING OPTIONS AVAILABLE

- Modularity / Configurable to Individual Needs
- Designed to Meet the Requirements of the US Army From 40°F to -40°F
- Moisture managing / Wicking Insulation
- Water Resistant

INTERMEDIATE
COMBINATION

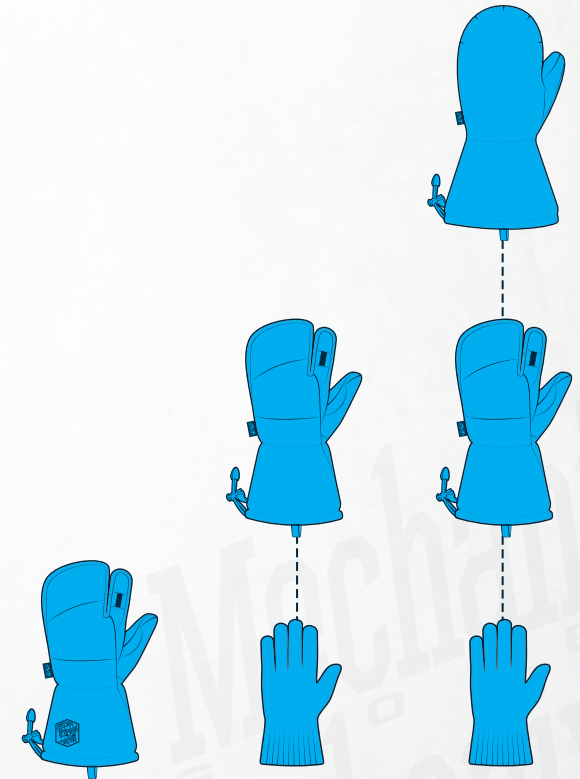
Up to **2 LAYERS** of insulation



B **B D**

HEAVY INSULATION
COMBINATION

Up to **3 LAYERS** of insulation



C **A C** **A C D**