
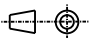


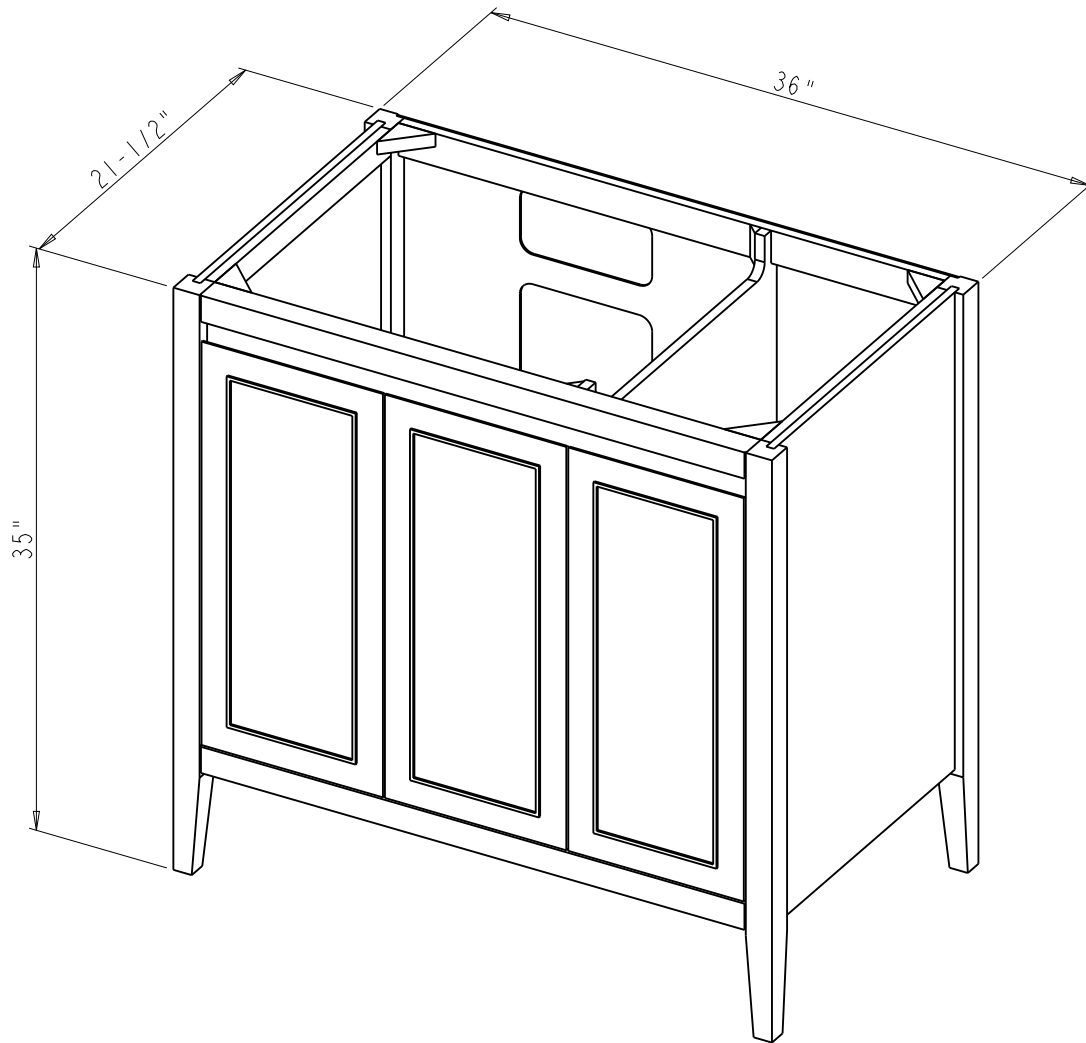
ADJUSTABLE-SHELF


Specification:

1. Material: MDF + Plywood + Birch
2. Finish & Inset: See Table
3. Slides: USE58-300-18 + US-CLIP-4W (2 Set)
4. Hinge: 700.0537.25 + 600.1234.05 (4 Set)
700.0536.25 + 600.1234.05 (2 Set)
- 5 Shelf Supports: 1707BN (8 PCS)
6. The tolerance is +/- 1/8"

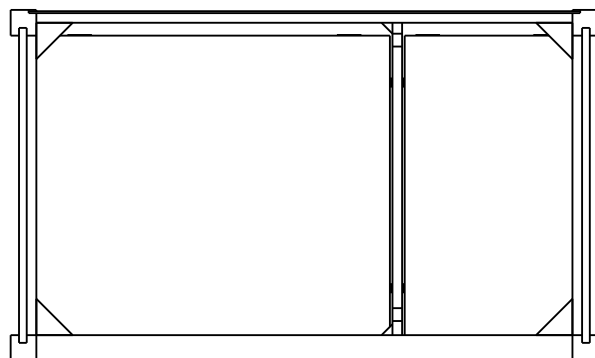
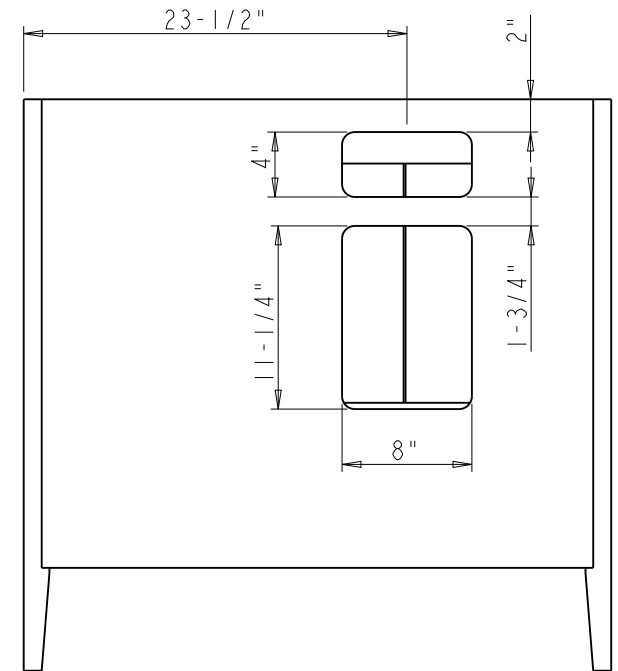
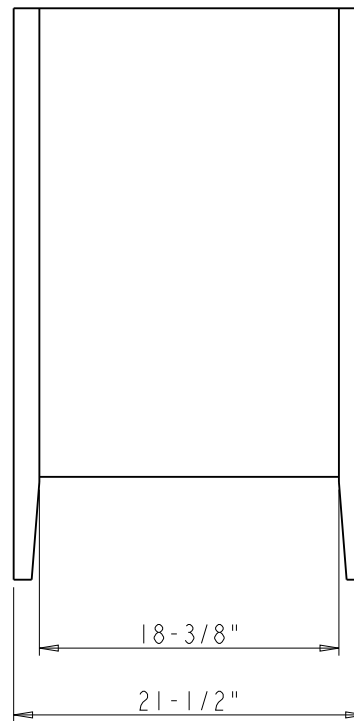
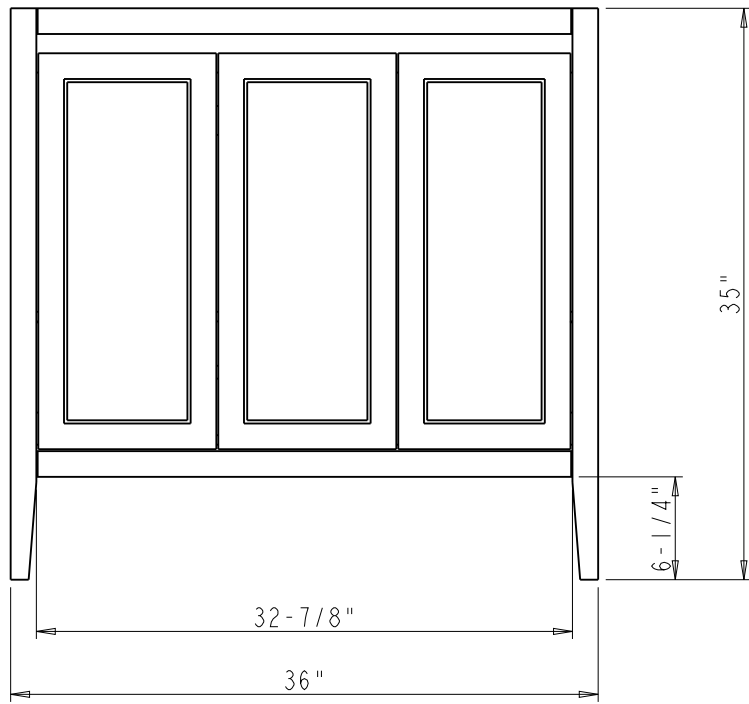
Item number	Finish	Inset
VN2PER-36-BK-NT	Black	PC
VN2PER-36-BL-NT	Blue	SBZ
VN2PER-36-WH-NT	White	SBZ
VN2PER-36-GR-NT	Grey	MB

 PROPRIETARY AND CONFIDENTIAL THE INFORMATION CONTAINED IN THIS DRAWING IS THE SOLE PROPERTY OF HARDWARE RESOURCES INC. ANY REPRODUCTION IN PART OR AS A WHOLE WITHOUT THE WRITTEN PERMISSION OF HARDWARE RESOURCES INC. IS PROHIBITED. DO NOT SCALE DRAWING	ITEM#: VN2PER-36	MATERIAL:
	FINISH:	WEIGHT: 9
	TOLERANCE UNLESS OTHERWISE SPECIFIED: X ±0.20 X.X ±0.10 X.XX ±0.05 ANGULAR: ±0.5°	PROJECTION 
	UNITS:	DATE: May-07-21
DRAWN BY: Tony.Huang	APPROVED BY:	DATE:
SHEET:	RELEASE LEVEL:	REVISION:



 PROPRIETARY AND CONFIDENTIAL THE INFORMATION CONTAINED IN THIS DRAWING IS THE SOLE PROPERTY OF HARDWARE RESOURCES INC. ANY REPRODUCTION IN PART OR AS A WHOLE WITHOUT THE WRITTEN PERMISSION OF HARDWARE RESOURCES INC. IS PROHIBITED.	ITEM#: VN2PER-36		MATERIAL:		
	FINISH:		WEIGHT:		
	TOLERANCE UNLESS OTHERWISE SPECIFIED: X ±0.20 X.X ±0.10 X.XX ±0.05 ANGULAR: ±0.5°		UNITS:	DRAWN BY: <i>Tony.Huang</i>	DATE: May-07-21
	DO NOT SCALE DRAWING		SIZE:	APPROVED BY:	DATE:
		SHEET:	RELEASE LEVEL:	REVISION:	





<p>hardware resources</p> <p>PROPRIETARY AND CONFIDENTIAL</p> <p>THE INFORMATION CONTAINED IN THIS DRAWING IS THE SOLE PROPERTY OF HARDWARE RESOURCES INC. ANY REPRODUCTION IN PART OR AS A WHOLE WITHOUT THE WRITTEN PERMISSION OF HARDWARE RESOURCES INC. IS PROHIBITED.</p> <p>DO NOT SCALE DRAWING</p>	ITEM:	VN2PER-36		MATERIAL:
	FINISH:			WEIGHT:
				PROJECTION
TOLERANCE UNLESS OTHERWISE SPECIFIED:	UNITS:	DRAWN BY:		DATE:
X ±0.20		Tony.Huang		May-07-21
X.X ±0.10	SIZE:	APPROVED BY:		DATE:
X.XX ±0.05				
ANGULAR: ±0.5°	SHEET:	RELEASE LEVEL:		REVISION: