



XOU30BWDDGO
UNDERCOUNTER COMBO
BEVERAGE CENTER & WINE COOLER
GLASS OVERLAY



Zero clearance hinges for a
flush installation

Fully extending telescoping
racks and shelves

Individual digital touch controls

Individual door locks

30" UNDERCOUNTER COMBO UNIT with OVERLAY FRAME DOORS

THE ULTIMATE IN CONVENIENT ENTERTAINING -YOUR FAVORITE VINTAGES
AND ICY COLD BEVERAGES READY TO SERVE, JUST WHERE YOU WANT THEM

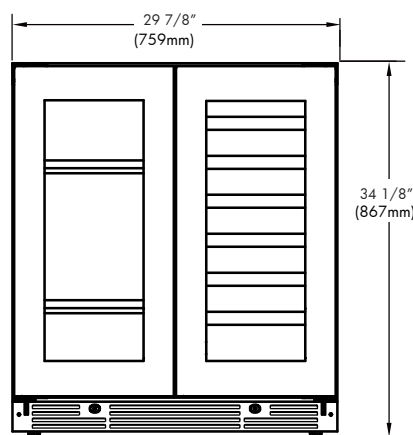
Your XO French Door Combo Unit has the ability to store both wine at 41° to 64° F ready to serve and icy cold beverages from 34° to 50°F in the same compact system. Designed to fit under a counter and where ever your life takes you.

WORLD CLASS SERVICE | COMPREHENSIVE WARRANTIES

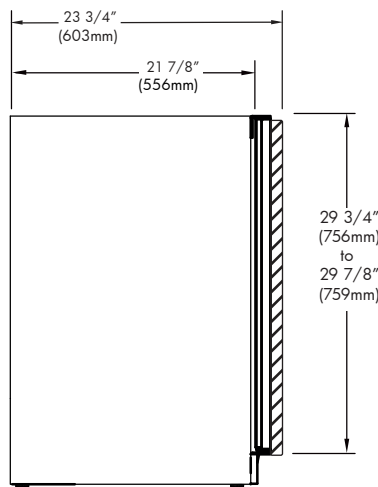
OUR LASTING COMMITMENT TO YOU



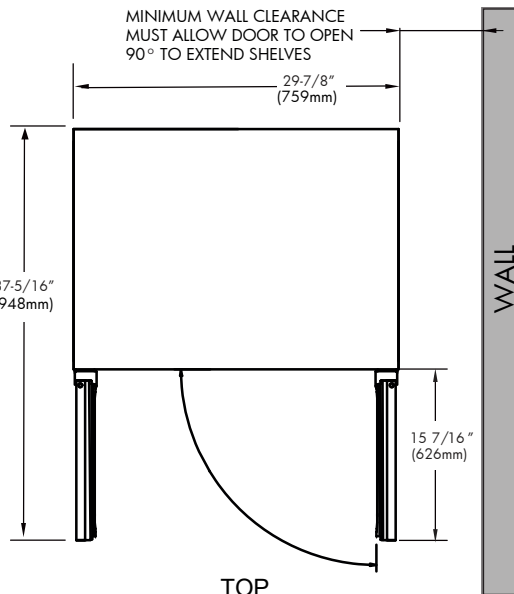
23 3/4" includes a 3/4" Overlay Panel



FRONT



SIDE



TOP

FEATURES

CAPACITY

Full extension shelves and racks hold:
(28) 750ml bottles at 41 ° to 64 °F
(66) 12oz cans at 34 ° to 50 °F

FEATURES

Zero clearance hinges for flush integration*
Secure door lock
Full extension shelves and racks
Library quiet 39 dBA operation
Elegant tri-color interior illumination
Intuitive digital touch controls
6-1/2' Power Cord with low profile 90° flat plug
Low E Glass blocks harmful UV light
Alarm Functions
Energy Saver and Sabbath Mode

* Note: zero clearance hinges are visible just above and below the door panel

SPECIFICATIONS

ELECTRICAL 120V 60HZ 4.35 AMP*

DIMENSIONS H 34 1/8"
W 29 7/8"
D 23 3/4" (w 3/4" finish panel)

ROUGH IN H 34 1/4" min
W 30"
D 24"

REFRIGERANT R600A



Watch the
Video on
YouTube
CLICK ON
THE IMAGE

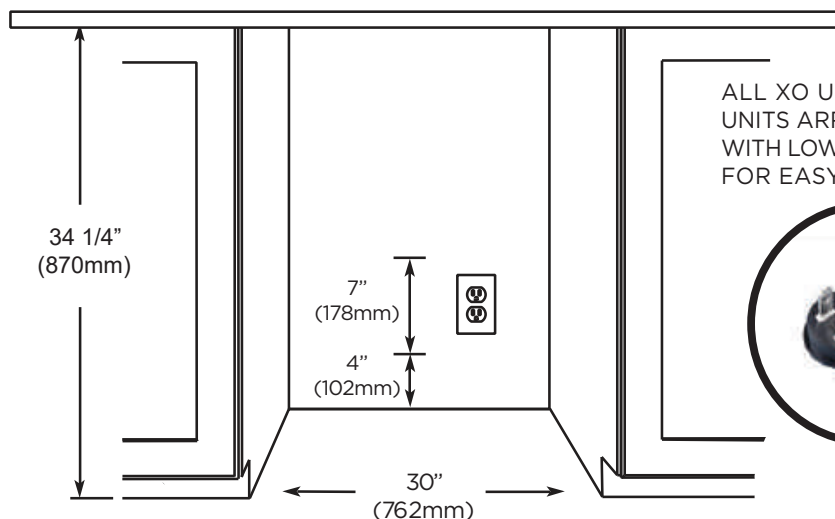
XO the next level
in luxury appliances

xoappliance.com | 800.966.8300



XO is exclusively distributed by
EASTERN MARKETING CORP.
24 Eisenhower Parkway
Roseland, NJ 07068

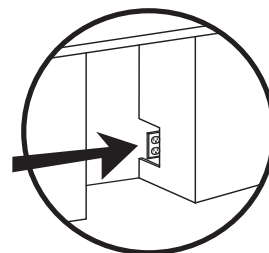
ROUGH IN DIMENSIONS



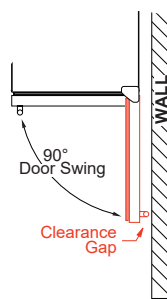
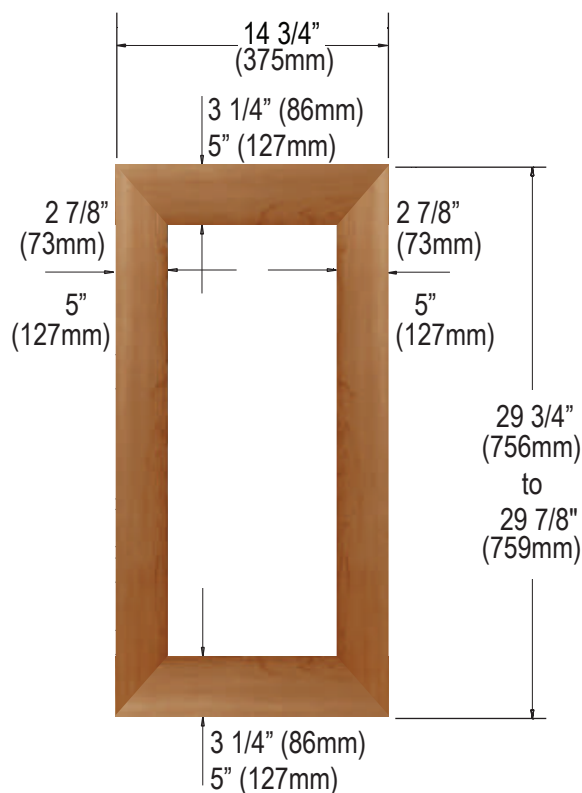
ALL XO UNDERCOUNTER UNITS ARRIVE PRE-WIRED WITH LOW PROFILE PLUGS FOR EASY INSTALLATION



NEED MORE SPACE - CUT INTO AN ADJOINING CABINET TO REACH AN OUTLET THERE

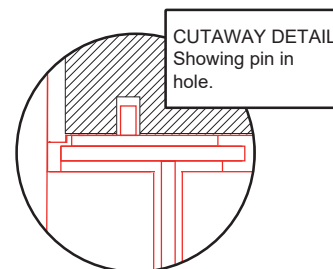


OVERLAY FRAME DIMENSIONS



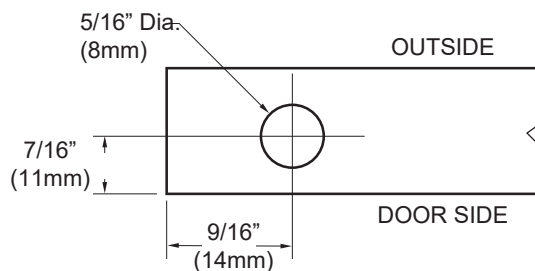
WHEN INSTALLING WITH THE HINGE SIDE NEXT TO A WALL - LEAVE ADEQUATE SPACE FOR CABINET HANDLES

DOOR MUST BE ABLE TO OPEN A MINIMUM OF 90°.



TO ACCOMMODATE THE HINGE PINS ON THE HINGE SIDE OF THE PANEL Drill a hole at least 5/16" in diameter and 1" deep into the top and bottom of the frame in the location shown.

9/16" in from the edge and 7/16" out from the unfinished side facing the door.



THE DOOR STOP IS SET AT 110° BUT CAN BE RESET TO 90° OR 140°.

IF THE DOOR CANNOT OPEN FULLY YOU CANNOT EXTEND THE RACKS.

XO the next level
in luxury appliances