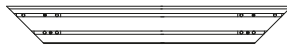


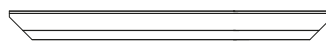
## Parts Included



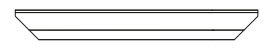
Horizontal frame packages x 2 sets  
1 sets included: 1pcs frame with nuts plate & screw installed + 1pcs single frame



Vertical frame packages x 2 sets  
1pcs frames with nuts plate & screw installed



Horizontal frame cover x 2pcs



Vertical frame cover x 2pcs



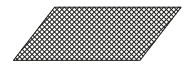
Screen material x 1pcs



Long tension rod x 2pcs (for vertical frame)  
short tension rod x 2pcs (for horizontal frame)



EPE cotton mat x 1pcs  
(for fabric installation protection)



Black non woven fabric  
(only for woven acoustic fabric)



Drag hook  
(several)



5" x 12 screws



m6x8 screw  
x 40pcs



m5x5 fixing screw  
x 32pcs



L corner piece  
x 4pcs



Corner piece  
x 4pcs



T joint  
x 2pcs



Wall Brackets  
x 4pcs



#12 x 2"  
Wood Screws  
x 4pcs



Corner cover  
x 4pcs

## Tools Included



M2.5 hexagon  
wrench x 1pcs



Hook Tool x  
1pcs



Screw driver  
x 1pcs



Gloves  
x 2pcs

• You will also need a tape to measure, level, pencil, etc.

• Please make sure installation position for upper and lower mounting brackets match drawing specs by screen size(see screen installation on pg.2).

• Use the proper screws for installation according to the site condition. Always install to structure!

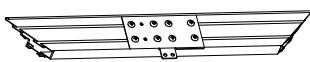
## Installation Instructions

### Assembly of frames

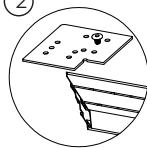
Place the T joint on frame splice(2). Align the T joint with nut plate inserted in the frame.

• Using the M6 screws, tighten T-Joint. Please check diagram 1.

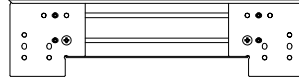
①



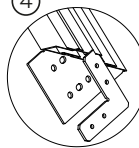
②



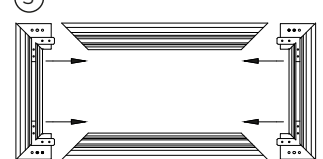
③



④

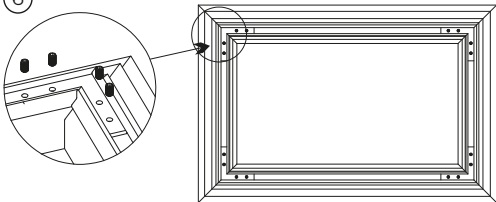


⑤

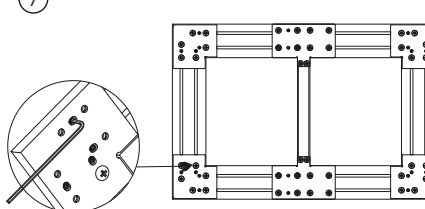


• Put corner piece on the both sides of vertical frames(2 and 3). Check for square before tightening by measuring diagonal corner to corner. Insert L corner piece into the channel accordingly. Finger tighten screws (3,4,5). Join vertical frames with horizontal frames(6). Tighten M5 screws one by one. Assemble supporting bar with screws (7). Turn over and tighten remaining screws, check for squares again. Loosen and adjust as needed.

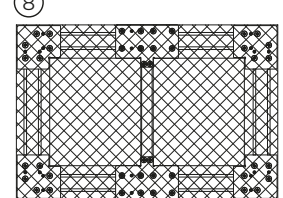
⑥



⑦



⑧

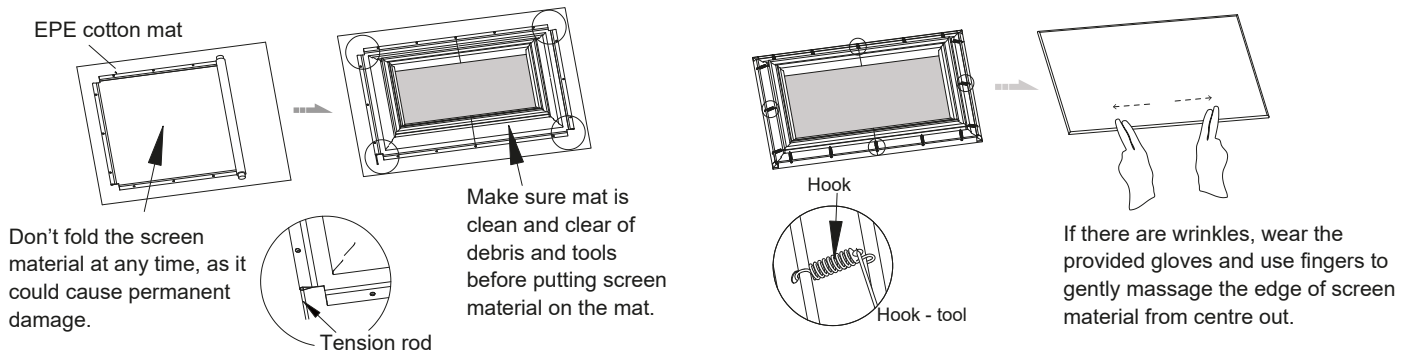


• If the screen is a woven acoustic screen, put the black fabric on the front of the aluminum frame before installing the viewing fabric, as shown (8).

• Black fabric must be behind vertical support bar.

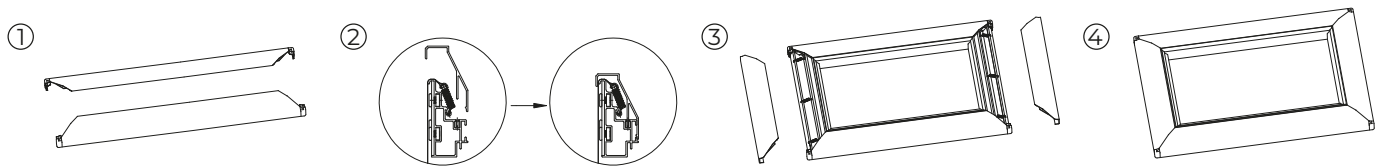
## Screen material installation

- Please wear glove provided for assembly of screen material. Lay out the provided cotton mat, then lay the screen material on it. Face the back of screen material up. Lay the frame on as indicated. The frame should be arranged at the center of screen material. Insert the tension rods by going through holes on corners of screen material.
- Tension the screen material: Use the large hook of spring to hook tension rod. Insert the hook tool through the hole in the hook. Then pull the small hook of spring to the slot in the frame. Hook the frame from the middle position to the sides(left and right) working from the centre out.



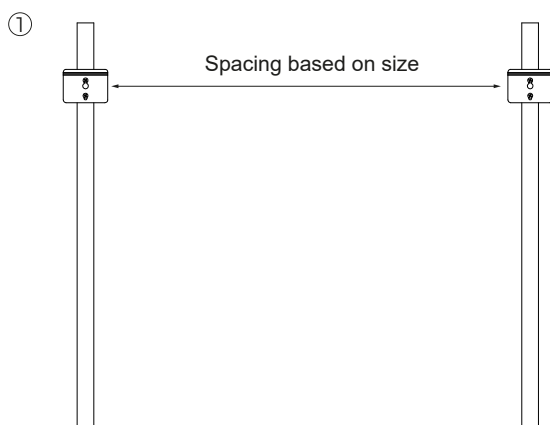
## Trim installation

- Press the corner covers into the vertical trim pieces. Install the horizontal trim pieces onto the aluminum frame, then the vertical trim pieces, pressing the corner covers into the horizontal trim. Using the M6X8 screws, secure the vertical trim pieces.



## Screen installation

NOTE: These additional brackets and screws have been provided to provide additional support to keep the horizontal frames straight when installed on the wall.



1. Install and level 2 brackets across the top mounting position into **STRUCTURAL SUPPORTS**.
2. Hang the screen on the brackets.

NOTE: Do NOT use drywall anchors for the middle brackets. The middle brackets **MUST** be secured to structural supports.

NOTE: Screws have been provided to go into wood studs. If other mounting substrate is present then installer must provide appropriate fasteners.

## Maintenance & Cleaning

This fixed product should not need any maintenance, but may require occasional cleaning. For dust, use a soft bristle brush or duster. Gently dust the material. For dirt, use a mix of warm water and very little dish soap. Gently clean the dirty area. Do not scrub or use any abrasive to clean, or damage may occur.