

## Enhance™ Collection

A blend of gradient color ranging from warm to cool offers a one-of-a-kind look. Mix stone, terrazzo, wood and concrete together to create a stylish, yet highly functional space, for any commercial application.

MIXT™  
Glazed Porcelain



Enhance™

FLOOR / WALL

RESIDENTIAL

COMMERCIAL

INDOOR

OUTDOOR

WARM

COOL

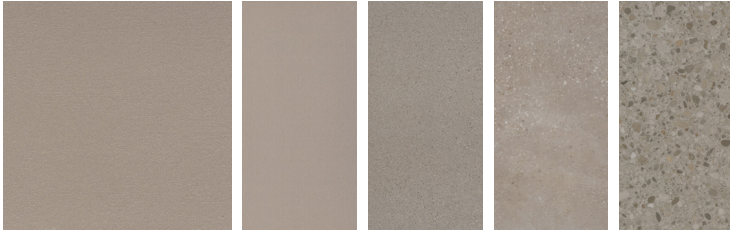
Light Greige



Light Gray



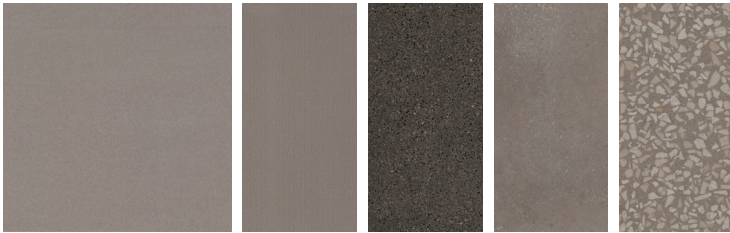
Greige



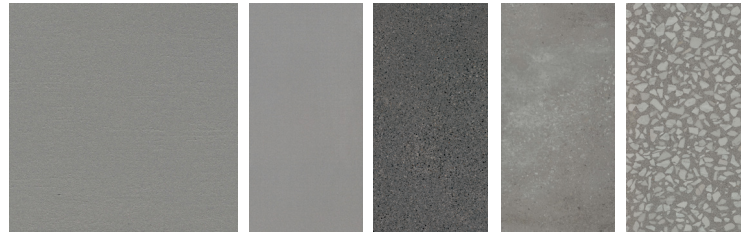
Gray



Dark Greige



Dark Gray



BRUSHED

TEXTURE

SPECK

MINERAL

FLAKE

BRUSHED

TEXTURE

SPECK

MINERAL

FLAKE

Speck and Flake Available in 31"x31" and 24"x24"  
Brushed, Texture, and Mineral Available in 24"x24" and 12"x24"

SIZES							
	31" x 31" 31.38" x 31.38"	24" x 24" 23.50" x 23.50"	12" x 24" 11.69" x 23.50"				
THICKNESS	9mm	9mm	9mm				
FINISH	Matte	Matte	Matte				
EDGE	Rectified	Rectified	Rectified				
Grout Joint Recommendation	1/8"	1/8"	1/8"				
TESTING	Deep Abrasion Max	Breaking Strength C648	Chemical Resistance C650	Water Absorption C373	DCOF ANSI A1371	Scratch Hardness MOHS	Shade Variation Rating
RESULTS*	175MM3	>250 lbf	Resistant	TIP	>0.42	TIP	V2-V3

EmGuard & EmGuard+  
Anti-Microbial Technology Available\*\*

Product and Installation Details | ANSI A108.02  
Section 4.3.8.2 - For running bond/brick joint patterns utilizing tiles (square or rectangular) where the side being offset is greater than 18" (nominal dimension), the running bond offset will be a maximum of 33% unless otherwise specified by the tile manufacturer. If an offset greater than 33% is specified, specifier and owner must approve mock-up and lippage.



Sustainability Attributes

- Red List Free
- Health Product Declaration (HPD) provided upon request
- Product Packaging is 100% recyclable
- VOC Free

\*For more information check with your Emser representative. Always consult a professional for proper usage and installation.  
\*\*EmGuard and EmGuard+ are applicable to the entire MIXT series.