



IMPORTANT

Carefully remove all the parts from the carton and place them individually on a soft cloth to prevent scratches or other damage.

Carefully and strictly follow these assembly instructions to ensure a completed product as designed.

Do not use power tools above 8 volts to assemble.

Part List

- A. Top**
1 pc.
- B. Side Panel**
1 pc.
- C. Middle Panel**
1 pc.
- D. Side Panel**
1 pc.
- E1. Back Rail**
1 pc.
- E2. Back Rail**
1 pc.
- F. Back Upright**
1 pc.
- G. Back Upright**
2 pcs.
- H. Back Panel**
4 pcs.
- I. Front Rail**
1 pc.
- J. Front Rail**
1 pc.
- K. Divider**
1 pc.
- L. Base**
1 pc.
- M. Side Bar**
2 pcs.
- N. Shelf**
2 pcs.
- O. Door**
2 pcs.
- P. Door**
2 pcs.
- Q. Drawer**
2 pcs.
Refer to later page(s) of these instructions for drawer assembly.

Hardware List

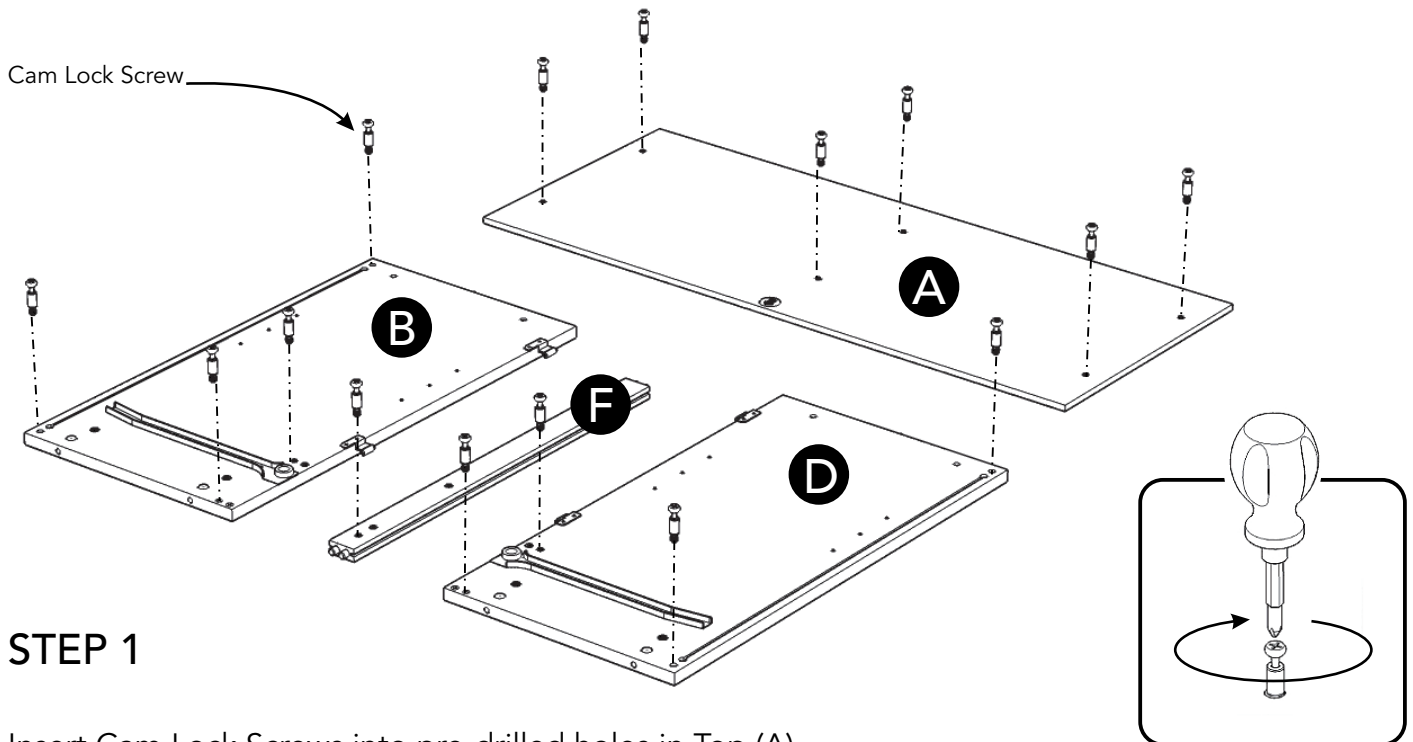
- Small Hex Wrench
1 pc.
- Hex Wrench
1 pc.
- Cam Lock Screw
15 pcs. (+1 extra)
- M6x35 Head Cap Bolt (short)
4 pcs. (+1 extra)
- M3.5x25 Wood Screw (long)
16 pcs. (+1 extra)
- M3.5x16 Wood Screw (short)
12 pcs. (+1 extra)
- M4x25 Machine Screw
12 pcs.
- Caster
2 Locking
2 Non-Locking
4 pcs.
- M4x16 Wood Screw for Caster
16 pcs. (+1 extra)
- Cam Lock
15 pcs. (+2 extra)
- M6x50 Head Cap Bolt (long)
6 pcs. (+1 extra)
- Cross Dowel
6 pcs. (+1 extra)
- Adjustable Pin
8 pcs. (+1 extra)
- Handle
6 pcs.

Tool(s) required for assembly: Phillips screwdriver

Assembly Instructions 2/6

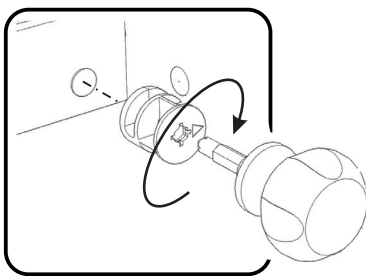
IMPORTANT

- Use a soft cloth between these parts and the floor.
- Do not use power tools above 8 volts to assemble.
- Do not tighten all the bolts until each part is properly assembled.
- Keep Hex Wrench as the bolts may need to be tightened in the future.



STEP 1

Insert Cam Lock Screws into pre-drilled holes in Top (A), Side Panels (B), (D) and Back Upright (F), then tighten. (See Figure 1)



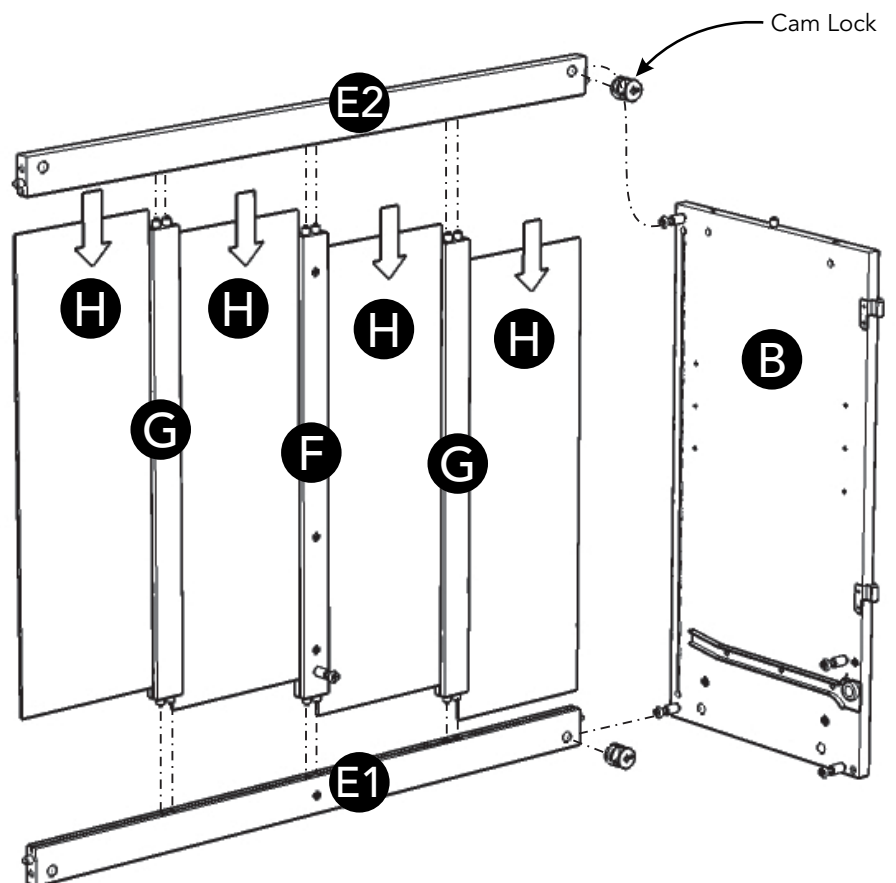
STEP 2

Attach Back Rail (E1) to Side Panel (B) with Cam Lock. (See Figure 2)

Attach Back Uprights (F), (G) to unit.

Slide Back Panels (H) into position.

Attach Back Rail (E2) to unit with Cam Lock.



STEP 3

Attach Front Rail (I) to unit with Cam Lock.

Attach Divider (K) to unit with Cam Lock.

Attach Front Rail (J) to unit with Cam Lock.

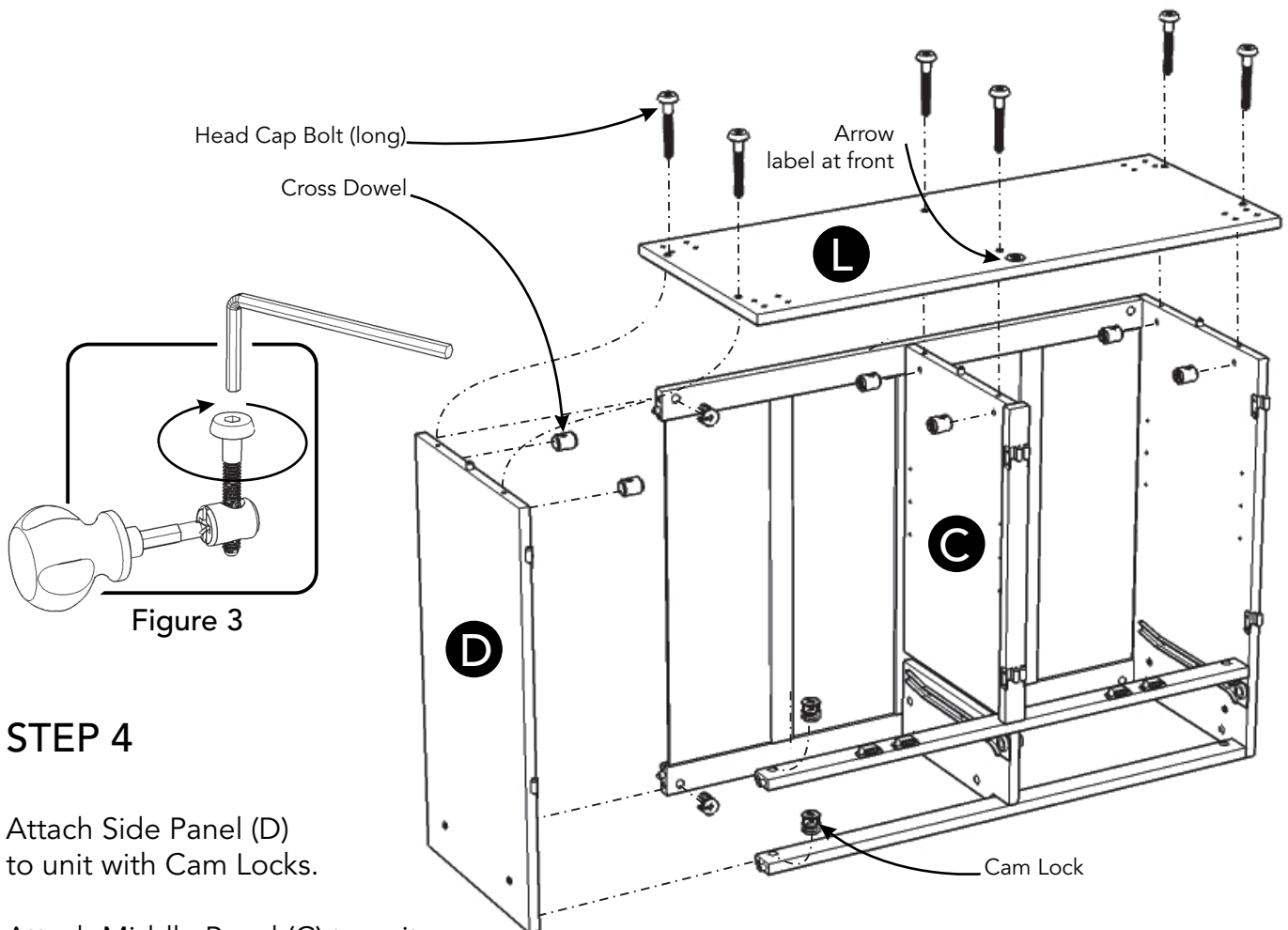
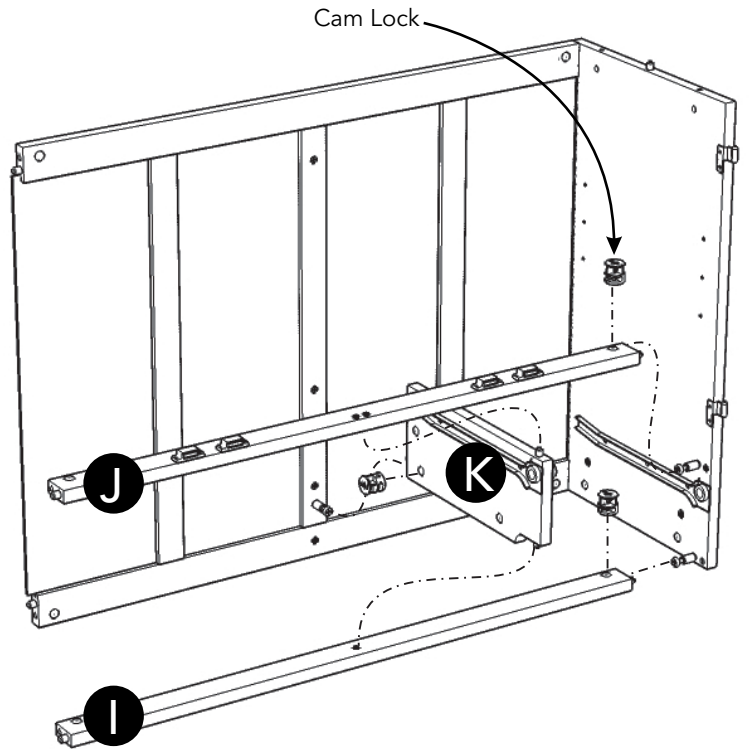


Figure 3

STEP 4

Attach Side Panel (D) to unit with Cam Locks.

Attach Middle Panel (C) to unit.

Attach Base (L) to unit with Head Cap Bolts (long) and Cross Dowels. (See Figure 3)

Note: Arrow label indicates front of Base (L).

Assembly Instructions 4/6

STEP 5

Attach Casters to unit with Wood Screws for Caster, with Locking Casters at front. (See Figure 4)

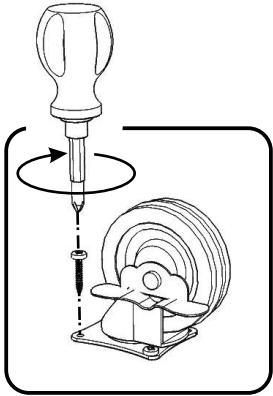


Figure 4

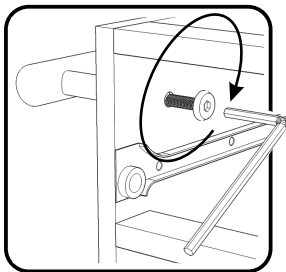
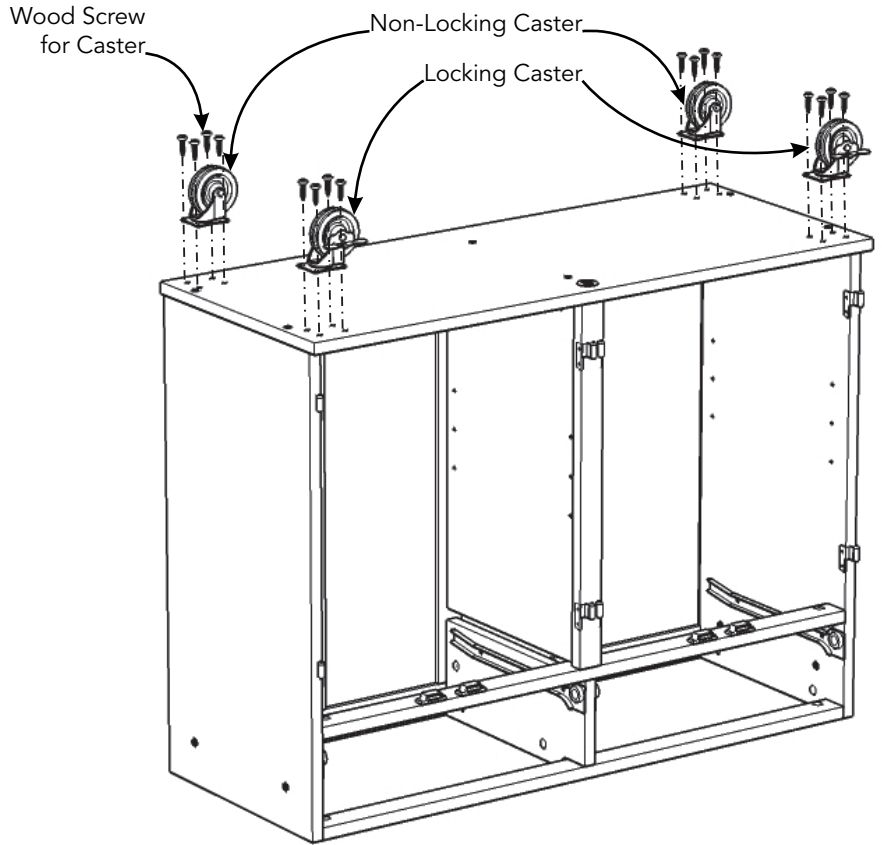


Figure 5

STEP 6

Turn unit over to its upright position.

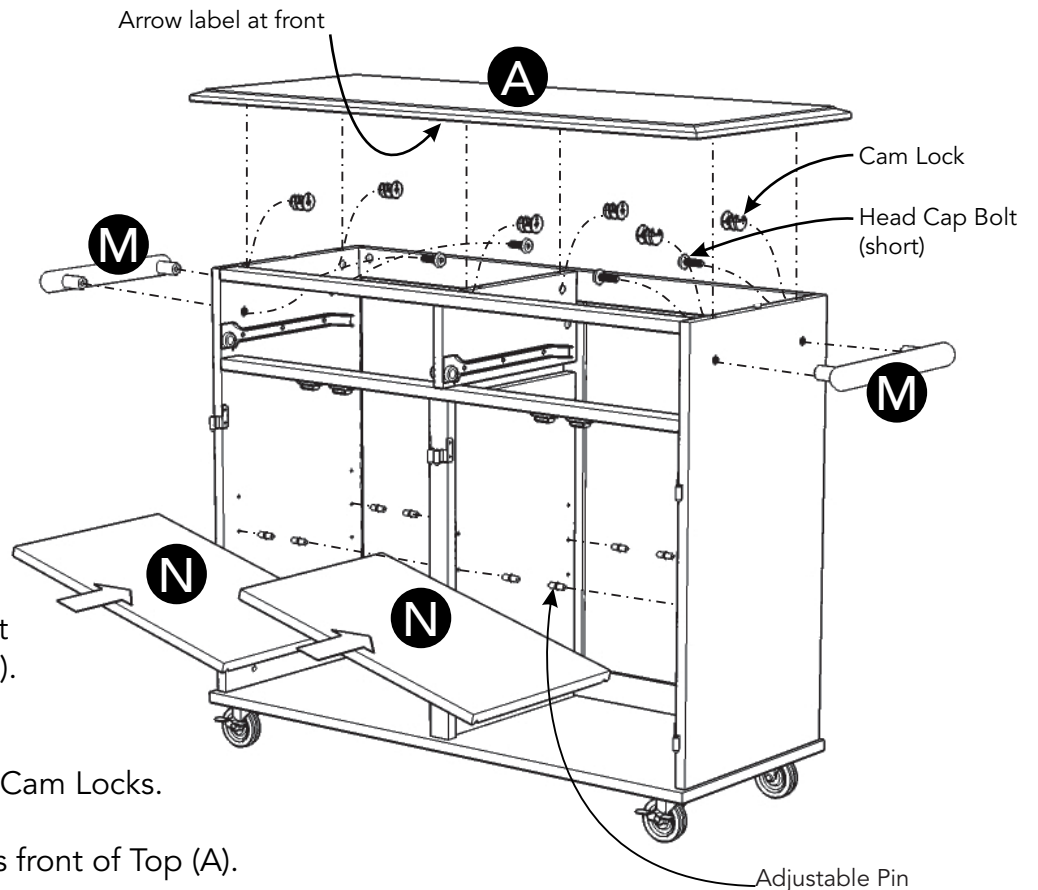
Attach Side Bars (M) to unit with Head Cap Bolts (short). (See Figure 5)

Attach Top (A) to unit with Cam Locks.

Note: Arrow label indicates front of Top (A).

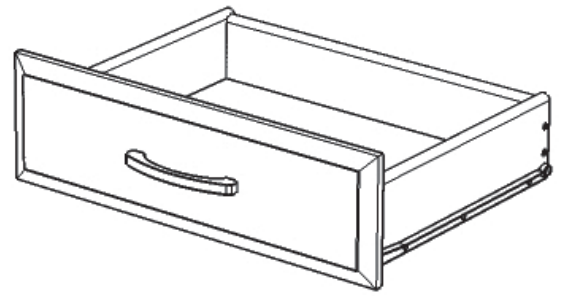
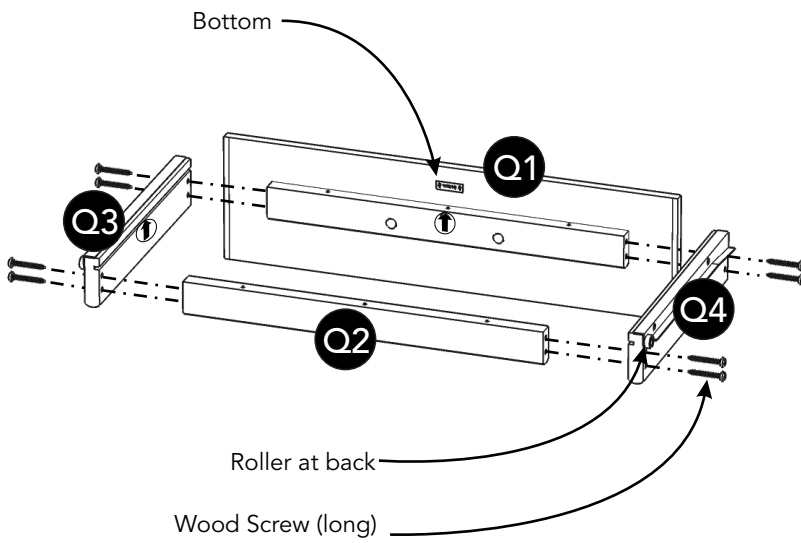
Insert Adjustable Pins into side panels and middle panel at desired level.

Place Shelves (N) into position.



Assembly Instructions 5/6

Drawer (Q)



STEP 7

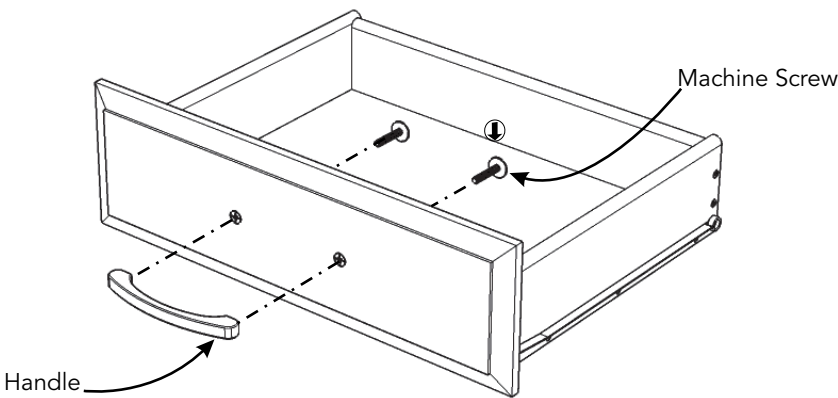
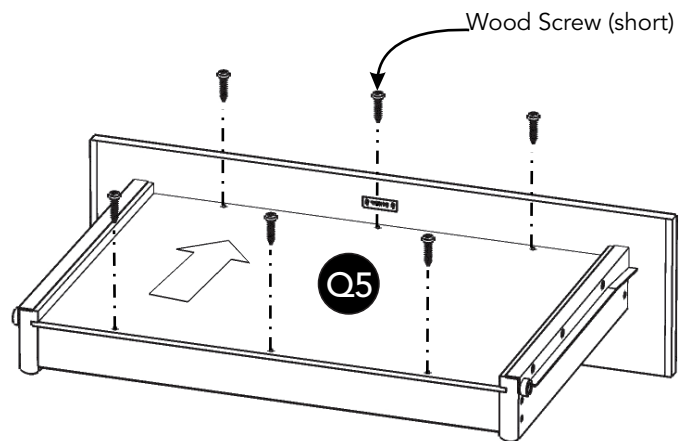
Attach Drawer Front (Q1) and Drawer Back (Q2) to Drawer Side (Q3) with Wood Screws (long).

Attach Drawer Side (Q4) to unit with Wood Screws (long).

STEP 8

Slide Drawer Bottom (Q5) into groove.

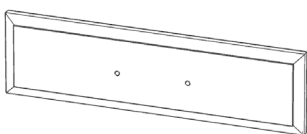
Attach Drawer Bottom (Q5) to unit with Wood Screws (short).



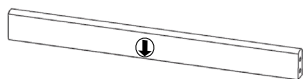
STEP 9

Attach Handle with Machine Screws.

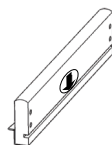
Part List



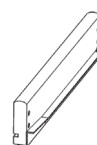
Q1.
Drawer Front
2 pcs.



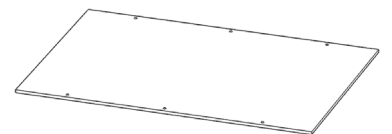
Q2.
Drawer Back
2 pcs.



Q3.
Drawer Side
2 pcs.



Q4.
Drawer Side
2 pcs.



Q5.
Drawer Bottom
2 pcs.

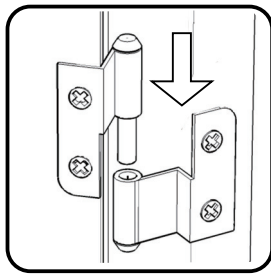
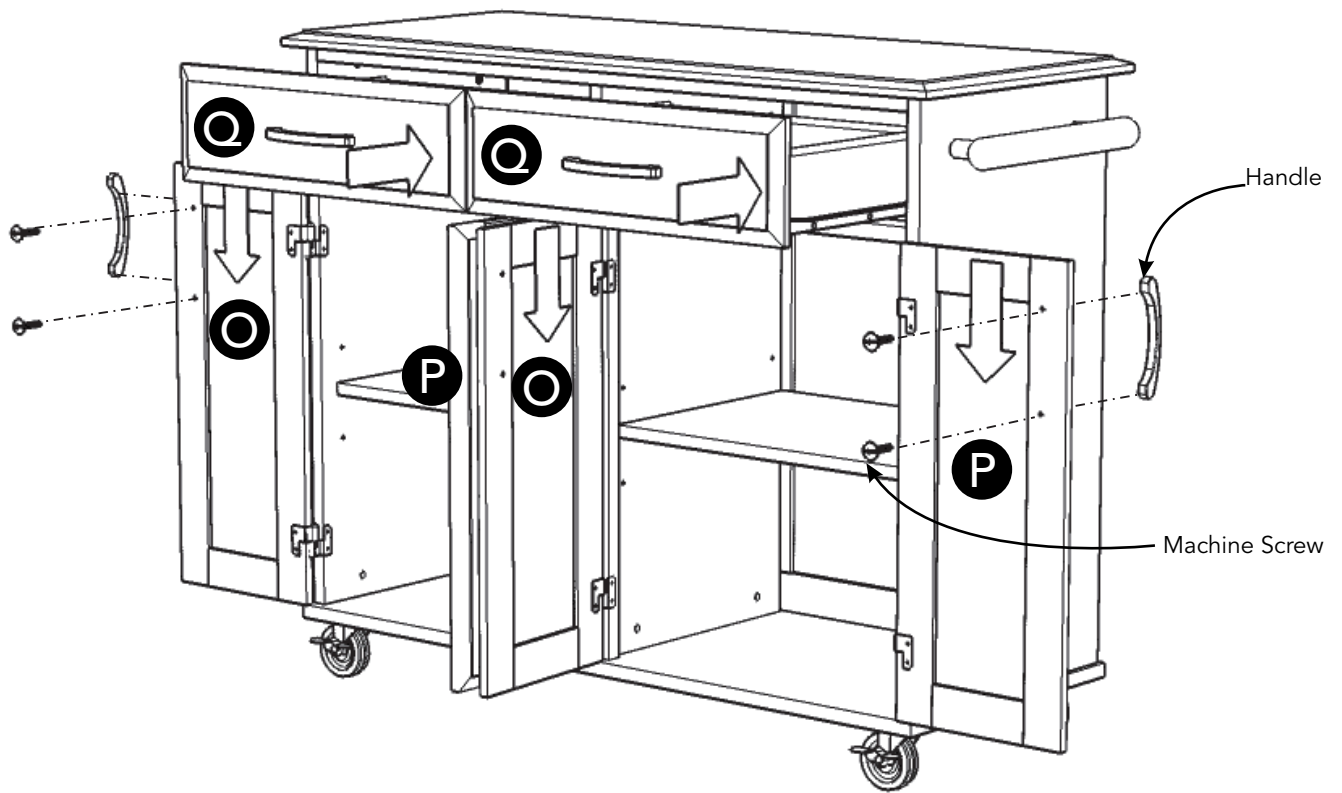


Figure 6

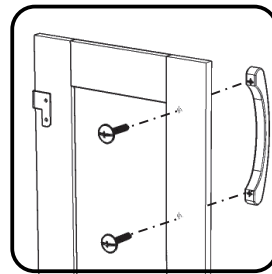


Figure 7

STEP 10

Attach Doors (O) and (P) to unit by sliding door hinges into side panel and middle panel hinges. (See Figure 6)

Attach Handles to Doors (O) and (P) with Machine Screws. (See Figure 7)

Slide Drawers (Q) into position.

CARE INSTRUCTIONS

NEVER

allow liquids to remain on furniture.
Absorption causes parts to warp
and split and finishes to delaminate.

NEVER

use glass cleaners on
finished furniture. Ammonia
chemically attacks the finish.



Do not use power tools
above 8 volts to assemble.

**PREVENT
CRACKING**



Do not place
in direct sunlight.

**PREVENT
FADING**



Do not write
directly on surface.

**PREVENT
MARKING**



Do not place hot
objects on surface.

**PREVENT
FINISH DAMAGE**



Do not use rubber
based placemats.

**PREVENT
DISCOLORING**



Do not use commercial
waxes and polishes.

**PREVENT
YELLOWING**

CLEAN

with a soft cloth moistened
in lukewarm soap and water.
Buff with a dry clean cloth.



Home Styles will provide replacements free of charge for missing or damaged hardware or parts within 30 days of purchase. Digital images of the defective parts may be required. If the product was not purchased from an authorized retail affiliate, Home Styles is under no obligation to provide replacement parts. Parts are not available for fully assembled items nor are parts available for sale. Replacements for missing or damaged hardware or parts may be requested at:

www.homestylesfurniture.com/customer-service/replacement-parts

Home Styles Customer Service: www.homestylesfurniture.com,
servicedesk@homestylesfurniture.com, 888-680-7460, 877-831-0319