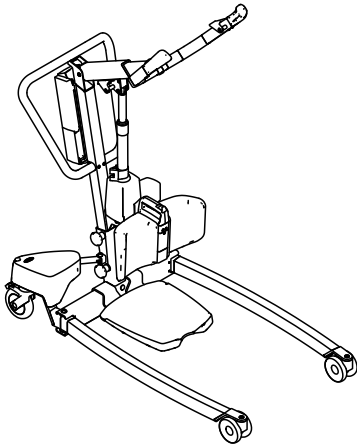
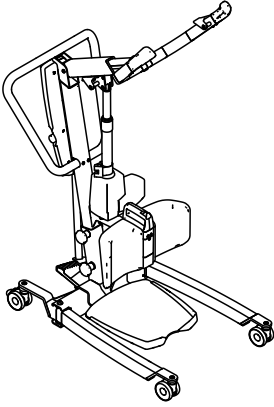


Invacare® ISA™

ISA™ COMPACT, ISA™ XPLUS

en Stand assist patient lift
Service Manual



PROVIDER: Keep this manual.
The procedures in this manual MUST be performed by a qualified technician.



Yes, you can.®

©2020 Invacare Corporation

All rights reserved. Republication, duplication or modification in whole or in part is prohibited without prior written permission from Invacare. Trademarks are identified by ™ and ®. All trademarks are owned by or licensed to Invacare Corporation or its subsidiaries unless otherwise noted.

Making Life's Experiences Possible is a registered trademark in the U.S.A.

Contents

| | |
|--|-----------|
| 1 General | 4 |
| 1.1 Introduction | 4 |
| 1.1.1 Symbols in this Document | 4 |
| 2 Safety | 5 |
| 2.1 General Safety Information | 5 |
| 2.2 Main parts of the lift. | 5 |
| 3 Servicing | 7 |
| 3.1 Service Interval | 7 |
| 3.2 Tightening Torques | 7 |
| 3.3 Resetting the service light | 7 |
| 3.4 Service inspection checklist | 8 |
| 4 Troubleshooting | 10 |
| 4.1 Identifying and repairing faults | 10 |
| 5 Instructions | 12 |
| 5.1 Replacing 4" casters | 12 |
| 5.2 Replacing 5" casters | 13 |
| 5.3 Replacing the boom with lifting arm | 14 |
| 5.4 Replacing the boom actuator. | 15 |
| 5.5 Replacing a leg actuator without cover | 16 |
| 5.6 Replacing a leg actuator with cover | 17 |
| 5.7 Replacing electrical legs without actuator cover | 19 |
| 5.8 Replacing electrical legs with actuator cover | 20 |
| 5.9 Replacing the foot pedal and/or rods. | 21 |
| 5.10 Replacing manual legs | 22 |
| 5.11 Replacing the CBJ Care or CBJ2 control unit | 23 |
| 5.12 Replacing the hand grips | 24 |
| 5.13 Replacing the hooks | 24 |
| 5.14 Replacing the leg support | 25 |
| 5.15 Replacing the shin cushions | 26 |
| 5.16 Replacing the foot plate | 28 |
| 5.17 Replacing the heel block | 28 |
| 5.18 Installing the lever for manual leg spreader | 29 |
| 5.19 Installing the leg band | 30 |

1 General

1.1 Introduction

This document contains important information about assembly, adjustment and advanced maintenance of the product. To ensure safety when handling the product, read this document and the user manual carefully and follow the safety instructions.

Find the user manual on Invacare's website or contact your Invacare representative. See addresses at the end of this document.

Invacare reserves the right to alter product specifications without further notice.

Before reading this document, make sure you have the latest version. You find the latest version as a PDF on the Invacare website.

For pre-sale and user information, see the user manual.

For more information about the product, for example product safety notices and product recalls, contact your Invacare representative. See addresses at the end of this document.

1.1.1 Symbols in this Document

Symbols and signal words are used in this document and apply to hazards or unsafe practices which could result in personal injury or property damage. See the information below for definitions of the signal words.

**WARNING**

Indicates a hazardous situation that could result in serious injury or death if it is not avoided.

**CAUTION**

Indicates a hazardous situation that could result in minor or slight injury if it is not avoided.

**IMPORTANT**

Indicates a hazardous situation that could result in damage to property if it is not avoided.

**Tips and Recommendations**

Gives useful tips, recommendations and information for efficient, trouble-free use.

2 Safety

2.1 General Safety Information


WARNING!
Risk of injury or damage to property

- The procedures in this manual must only be performed by a qualified technician.
- Use only original accessories and spare parts.
- Do not handle this product or any available optional equipment without first completely reading and understanding these instructions and any additional instructional material such as user manuals, installation manuals or instruction sheets supplied with this product or optional equipment.
- After each assembly, check that all fittings are properly tightened and that all parts have the correct function.


WARNING!
Risk of contamination

- Clean and disinfect the product before servicing.


IMPORTANT!

Assembly of accessories might not be described in this service manual. Refer to the manual, delivered with the accessory.

- Additional manuals can be ordered from Invacare. See addresses at the end of this document.


IMPORTANT!

Some replacement parts are only available as a kit. Always use the complete new kit when replacing a part.

- Spare parts can be ordered from Invacare. Refer to your local Invacare website to access the electronic spare parts catalogue (ESPC).


IMPORTANT!

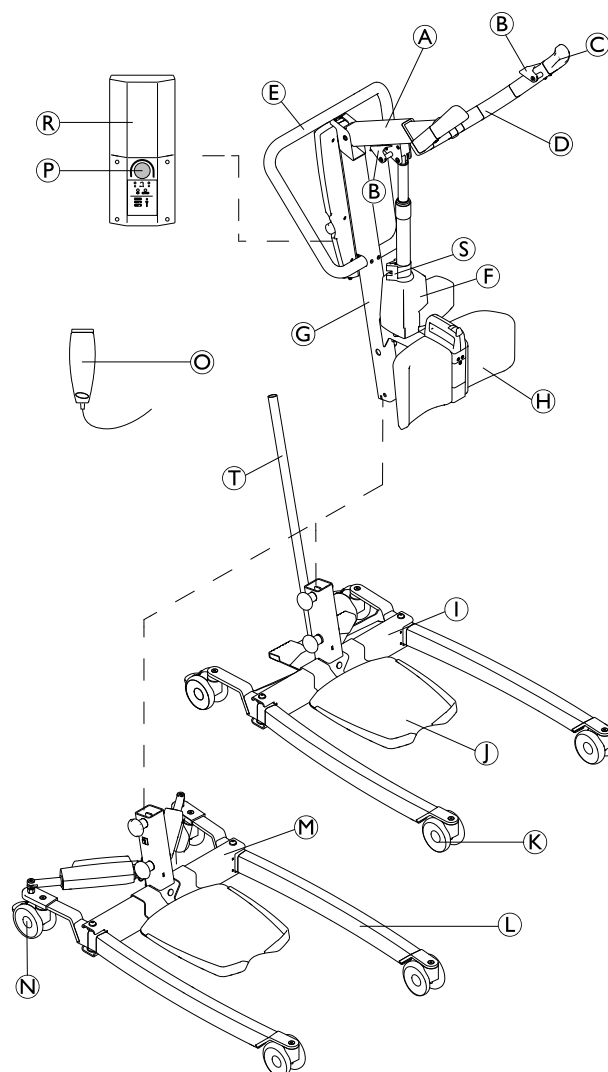
Refer to the user manual of this product for information on

- Technical data
- Product components
- Labels
- Additional safety instructions
- Cleaning and disinfection instructions



The information contained in this document is subject to change without notice.

2.2 Main parts of the lift



| | |
|-----|---|
| (A) | Boom |
| (B) | Hook for sling |
| (C) | Hand grip |
| (D) | Lifting arm |
| (E) | Push bar |
| (F) | Lifting actuator |
| (G) | Mast |
| (H) | Leg support (fixed or swiveling) |
| (I) | Base with foot pedal for manual leg spreader |
| (J) | Foot plate (high, low or inclined) |
| (K) | Front casters |
| (L) | Leg |
| (M) | Base with actuators for electrical leg spreader — with or without actuator covers |
| (N) | Rear casters with brake |
| (O) | Hand control |
| (P) | Emergency stop |
| (R) | CBJ Care or CBJ2 control unit with detachable battery |

| | |
|---|-------------------------------|
| Ⓢ | Mechanical emergency lowering |
| Ⓣ | Lever for manual leg spreader |

3 Servicing

3.1 Service Interval

Unless otherwise stated in local requirements, service must be performed at least every 12 months and according to the Service Inspection Checklist. When performing annual or regular service, all parts designed to carry load must be, as a minimum, tested with maximum load. All safety features must be checked according to ISO 10535:2006 Annex B.

3.2 Tightening Torques

! **IMPORTANT**
Do not overtighten the mounting hardware as this might cause damage to the product.

If not otherwise stated in the specific instructions the following guidelines apply:

| Thread | Tightening torque in ft lbs \pm 10% |
|--------|---------------------------------------|
| M4 | 2.2 ft lbs |
| M5 | 4.4 ft lbs |
| M6 | 7.4 ft lbs |

| Thread | Tightening torque in ft lbs \pm 10% |
|--------|---------------------------------------|
| M8 | 18.4 ft lbs |
| M10 | 36.1 ft lbs |
| M12 | 59.0 ft lbs |
| M16 | 132.8 ft lbs |

3.3 Resetting the service light

(CBJ Care control unit only)


To reset the service light after a service has been performed:

1. Locate the hand control.
2. Press and hold the UP button and the DOWN button at the same time for five seconds.
3. You will hear a sound when the service light has been reset.


The service light is now reset to indicate a service requirement after a 12 month period or 8000 cycles.

If the service light is required to be set for a period shorter than 12 months, a special handset and further instructions are required. Contact Invacare to order this handset and instructions.

3.4 Service inspection checklist

| | | | |
|---|--------|------------------|-----|
|  | Model: | REF / SN number: | 1/2 |
|---|--------|------------------|-----|

| Checkpoints for Invacare® ISA™ according to ISO 10535:2006 Annex B | ✓ | ✗ | Comment |
|--|---|---|---------|
| General inspection | | | |
| No unauthorized modifications | | | |
| All labels present and readable. (see full list of labels in the user manual) | | | |
| Safe working load visibly marked on product label and boom | | | |
| User manual available | | | |
| Visual inspection of mechanical parts | | | |
| No wear and deformation on pivot points and bolts (leg-base connection, mast-boom connection, actuator attachments) | | | |
| All connecting elements (screws and bolts) present and properly tightened or secured | | | |
| No deformation, cracks or other damages on welded joints | | | |
| Surfaces free of damages and corrosion | | | |
| No deformation on metal structure (legs, base, mast, boom and lifting arm) | | | |
| No deformation, wear, sharp edges or other damages on the sling hooks | | | |
| No deformation or other damages on lifting arm lever, leg spreader lever and leg support release handle | | | |
| No wear or damages on hand grips and shin cushions | | | |
| Casters free of damages, debris and dirt | | | |
| Visual inspection of electrical parts | | | |
| All cables undamaged and routed properly | | | |
| No leakage on the actuator(s) | | | |
| No cracks or other damages on housings (actuators, control unit, hand control) | | | |

| | | | |
|---|--------|------------------|-----|
|  | Model: | REF / SN number: | 2/2 |
|---|--------|------------------|-----|

| Checkpoints for Invacare® ISA™ according to ISO 10535:2006 Annex B | ✓ | ✗ | Comment |
|--|---|---|---------|
| Functional tests | | | |
| Casters smoothly swivel and roll | | | |
| Application and release of caster brakes is working properly | | | |
| Base fully opens and closes smoothly | | | |
| Emergency stop engages when pressed in and all electrical functions are disabled | | | |
| Emergency stop can be reset when button is turned clockwise | | | |
| Emergency functions on the control unit (emergency lowering and if applicable emergency lifting) are working properly | | | |
| Mechanical emergency release lowers the boom at safe speed | | | |
| Successful load test (full lifting cycle with 65% of maximum safe working load suspended at the two hooks of the fully extended lifting arm) with quiet and smooth operation of the actuator | | | |
| All buttons on the control unit and hand control are working and activate the correct function | | | |
| Battery indicator and LEDs on the control unit are working properly | | | |
| Adjustment mechanism of the lifting arm is working properly (release, smooth adjustment and self locking) | | | |
| Adjustment mechanism of the leg support is working properly (release, smooth adjustment and self locking) | | | |

Overall assessment

| | |
|---|--|
| <input type="checkbox"/> Pass No safety or functional deficiencies were detected. | <input type="checkbox"/> Fail Safety or functional deficiencies detected and corrective action is required. Comments: |
|---|--|

Date of next inspection: _____

Name: _____ Date / Signature: _____

! **IMPORTANT**
 Corrective actions must be performed by a qualified technician.
 Instructions for replacing and adjusting main parts are described in the service manual.

4 Troubleshooting

4.1 Identifying and repairing faults

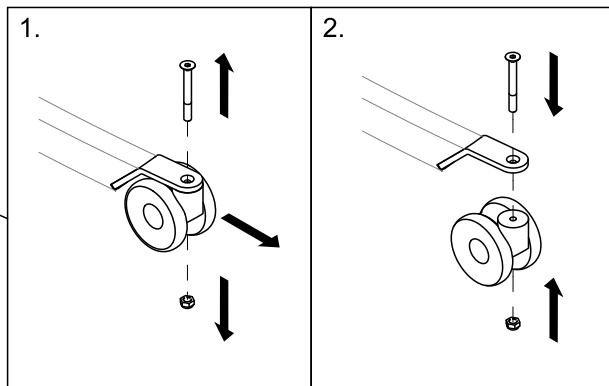
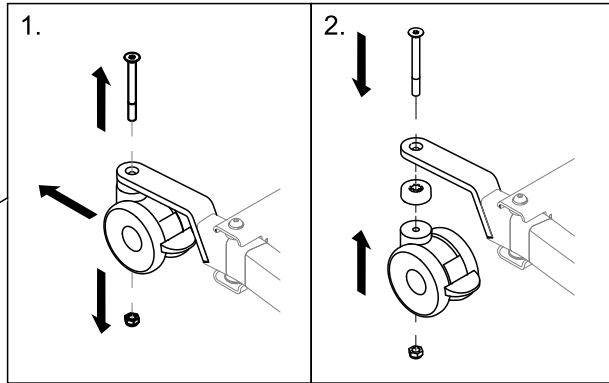
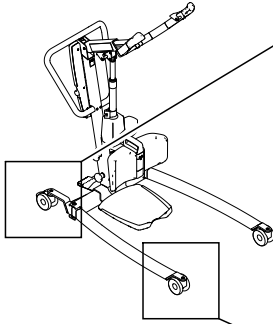
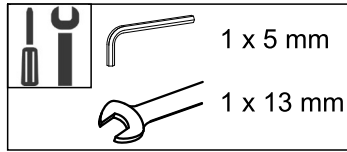
| Symptoms | Faults | Solution |
|---|--|--|
| Patient lift feels loose | Mast/Base joint loose | Check and tighten the Mast/ Base connection. See "Installing the Mast" in the user manual |
| | Mast/Boom joint loose | Check and tighten the Mast/ Boom connection. See 5.3 <i>Replacing the boom with lifting arm, page 14</i> |
| | Manual leg spreader mechanism loose | Check and tighten the screws of the rods and/ or pedal. See 5.9 <i>Replacing the foot pedal and/or rods, page 21</i> |
| Casters/Brakes noisy or stiff | Fluff or debris in bearings | Clean casters from fluff and debris |
| | Casters / brakes are damaged | Replace the casters. See 5.1 <i>Replacing 4" casters, page 12</i> or 5.2 <i>Replacing 5" casters, page 13</i> |
| Noisy or dry sound from pivots | Pivots are worn or damaged | Replace the pivots. See 5.3 <i>Replacing the boom with lifting arm, page 14</i> , 5.10 <i>Replacing manual legs, page 22</i> , 5.7 <i>Replacing electrical legs without actuator cover, page 19</i> or 5.8 <i>Replacing electrical legs with actuator cover, page 20</i> |
| Electric actuator fails to raise or lower the boom or legs fail to open or close when button is pressed | Hand-control or actuator connector loose | Connect hand control or actuator connector. Ensure connectors are seated properly and fully connected |
| | Battery low | Charge batteries. See "Charging the battery" in the user manual |
| | RED emergency stop button pressed IN | Rotate RED emergency stop button CLOCKWISE until it pops out |
| | Battery not connected properly to control unit | Reconnect the battery to the control unit. See "Charging the battery" in the user manual |
| | The connecting terminals are damaged | Replace the hand control and/or control unit. See 5.11 <i>Replacing the CBJ Care or CBJ2 control unit, page 23</i> |
| | Power cord connected to power outlet | Disconnect power cord from power outlet |
| | Boom or leg actuator is worn or damaged or spindle is bent | Replace the actuator. See 5.4 <i>Replacing the boom actuator, page 15</i> , 5.5 <i>Replacing a leg actuator without cover, page 16</i> or 5.6 <i>Replacing a leg actuator with cover, page 17</i> |
| Unusual noise from actuator | Boom or leg actuator is worn or damaged or spindle is bent | Replace the actuator. See 5.4 <i>Replacing the boom actuator, page 15</i> , 5.5 <i>Replacing a leg actuator without cover, page 16</i> or 5.6 <i>Replacing a leg actuator with cover, page 17</i> |
| Boom will not lower in uppermost position | Boom requires a minimum weight load to lower from the uppermost position | Pull down slightly on the boom |

| Symptoms | Faults | Solution |
|--|--|---|
| Boom will not lower during a power retraction | Shoulder bolt at the junction of the boom and mast may not be properly installed | Check Mast/ Boom connection. See <i>5.3 Replacing the boom with lifting arm, page 14</i> |
| The control unit emits a beeping sound during lifting, and the motor stops | Max. load is exceeded | Reduce the load (and the lift will function normally) |
| Manual legs fail to open with the pedal or lever | The mechanical mechanism is damaged | Replace foot pedal and/or rods. See <i>5.9 Replacing the foot pedal and/or rods, page 21</i> |
| Lifting arm can not be adjusted | The adjustment mechanism is damaged | Replace the boom and lifting arm. See <i>5.3 Replacing the boom with lifting arm, page 14</i> |
| Leg support can not be installed or adjusted | Leg band is clogging the back of the leg support | Clear the back of the leg support |
| | The adjustment mechanism is damaged | Replace the leg support. See <i>5.14 Replacing the leg support, page 25</i> |

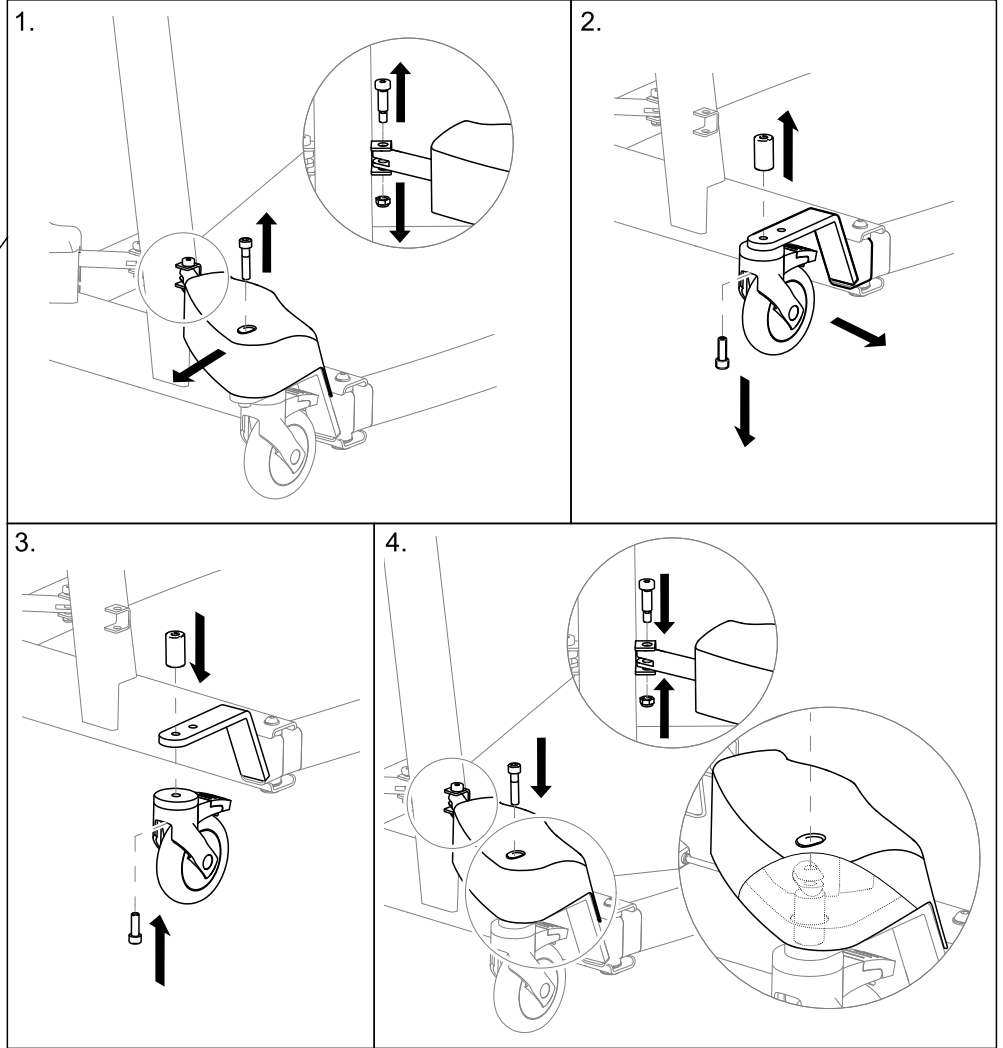
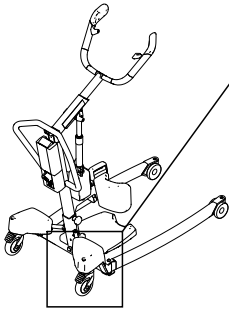
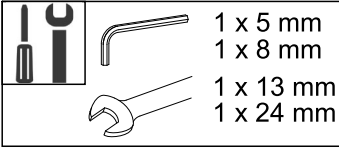
 Contact your Invacare provider or representative if the above does not solve your problems.

5 Instructions

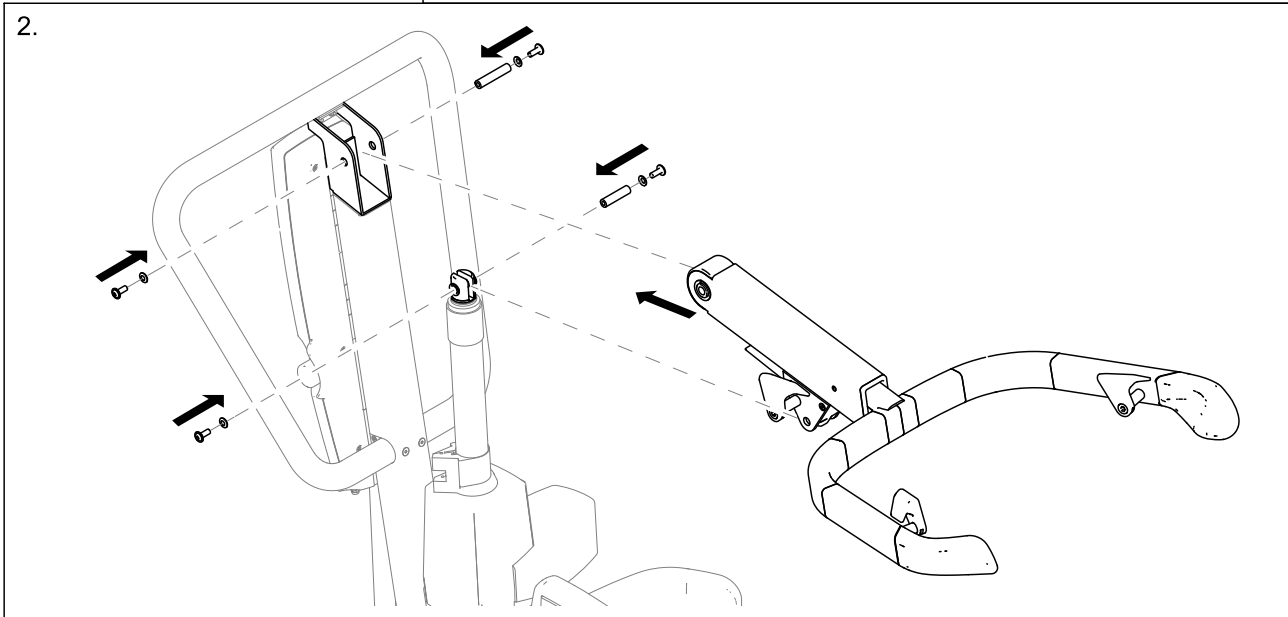
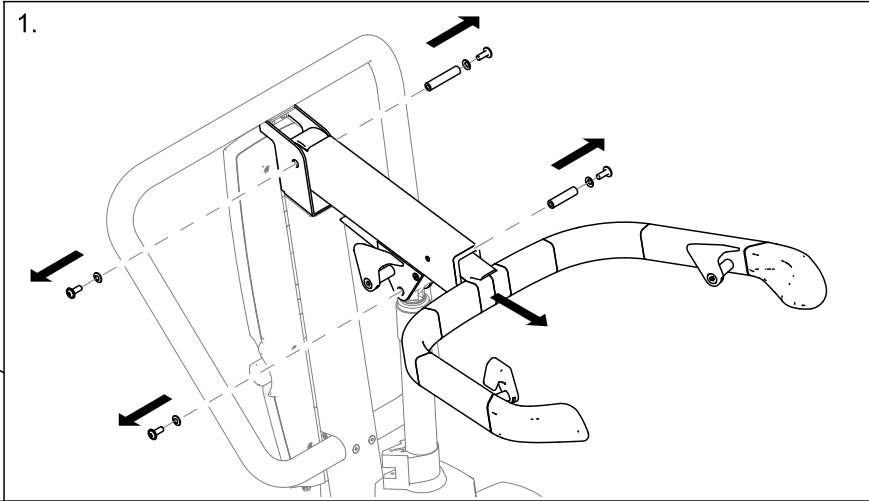
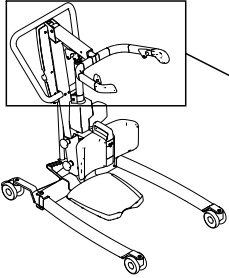
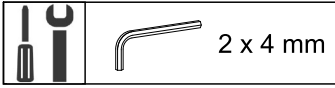
5.1 Replacing 4" casters



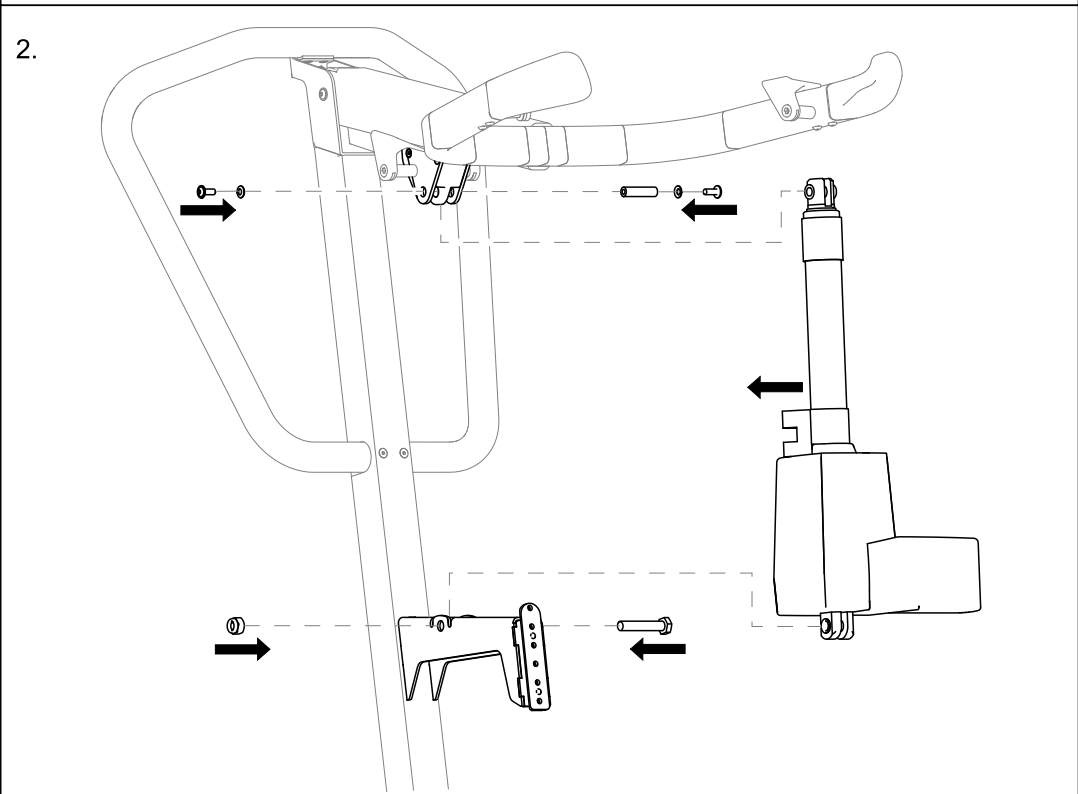
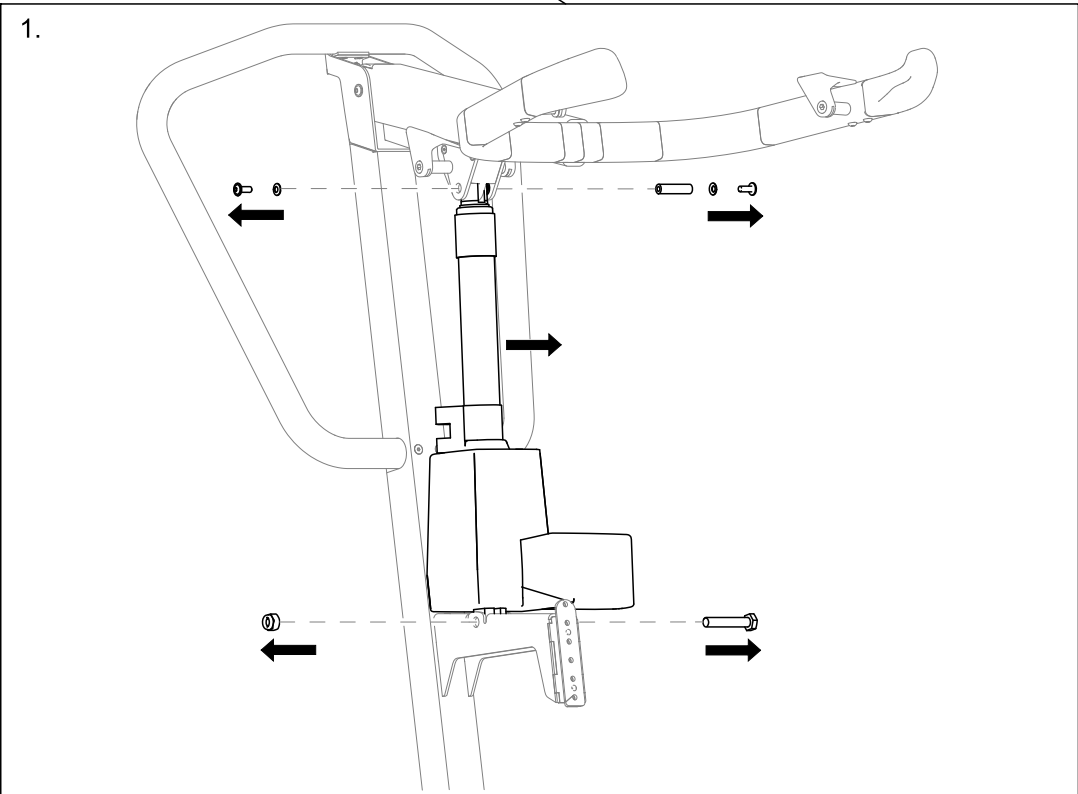
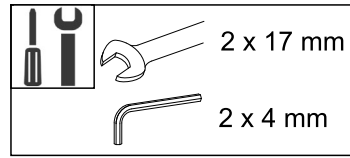
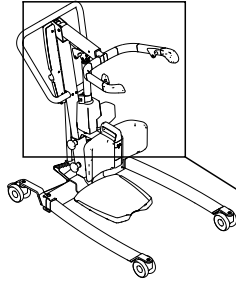
5.2 Replacing 5" casters



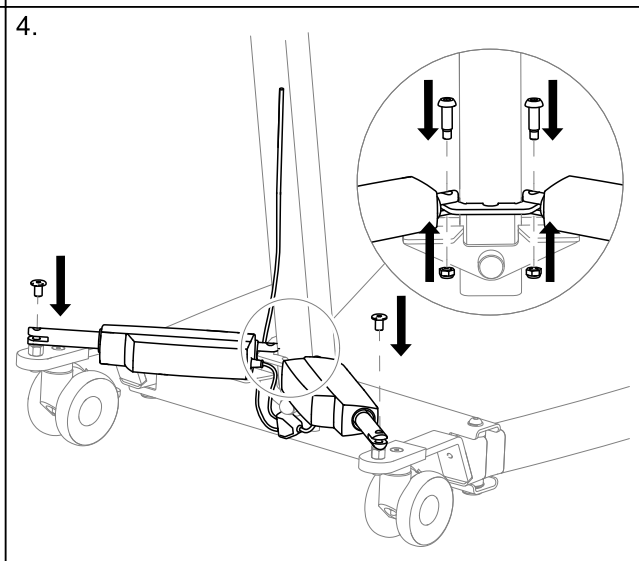
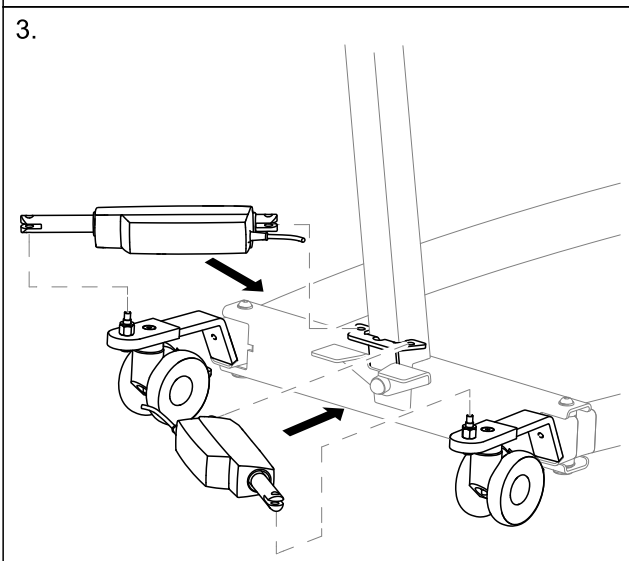
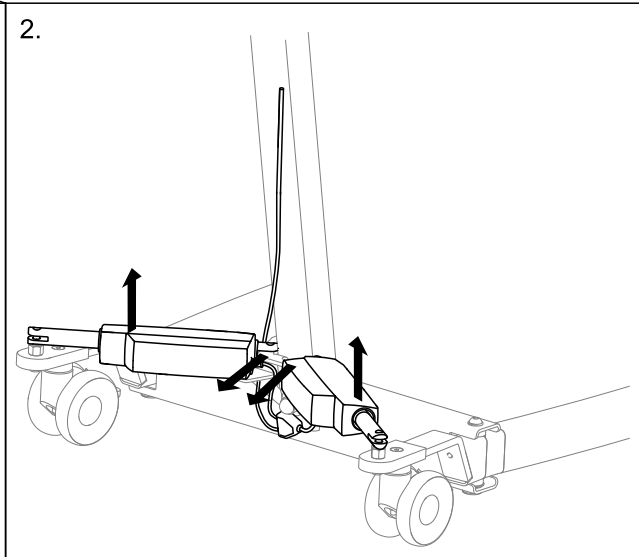
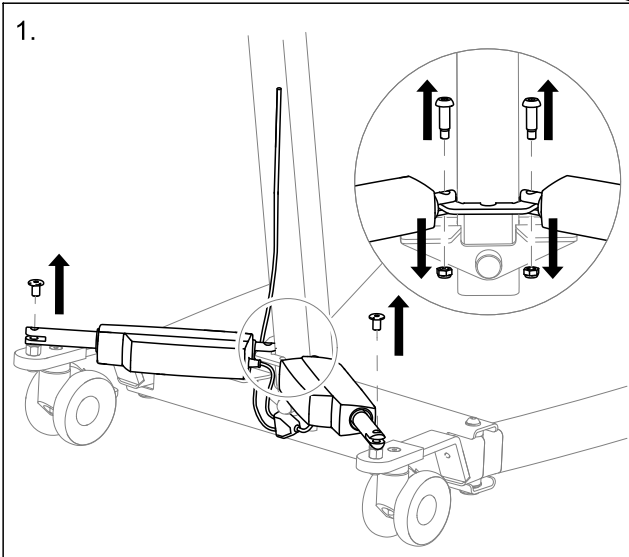
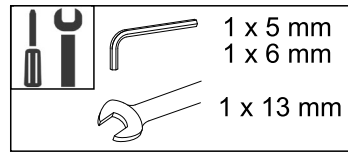
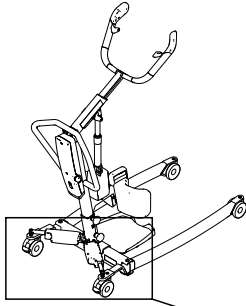
5.3 Replacing the boom with lifting arm



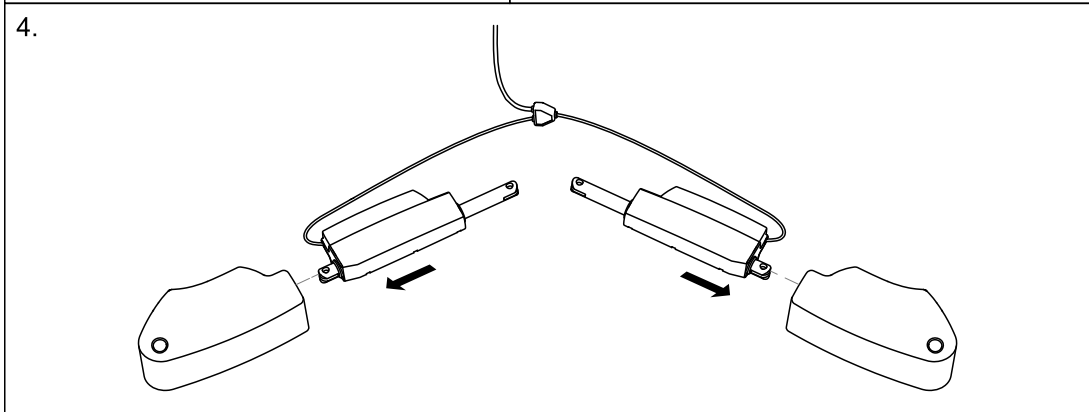
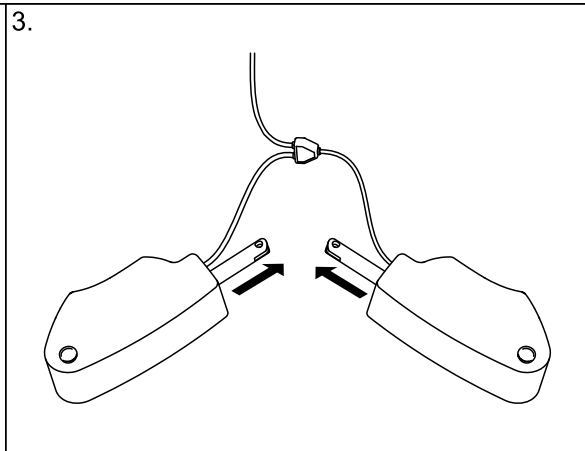
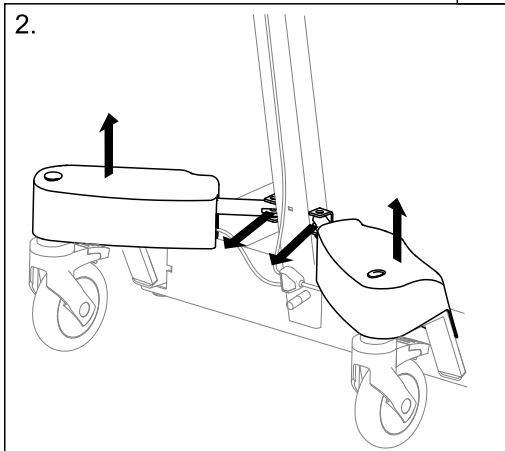
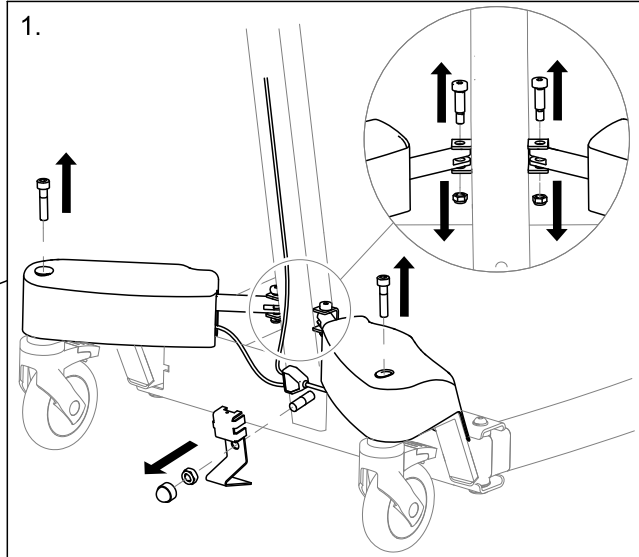
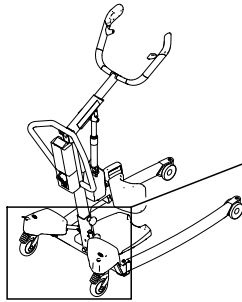
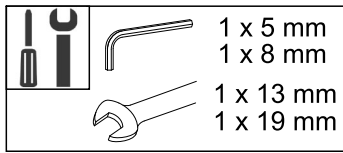
5.4 Replacing the boom actuator



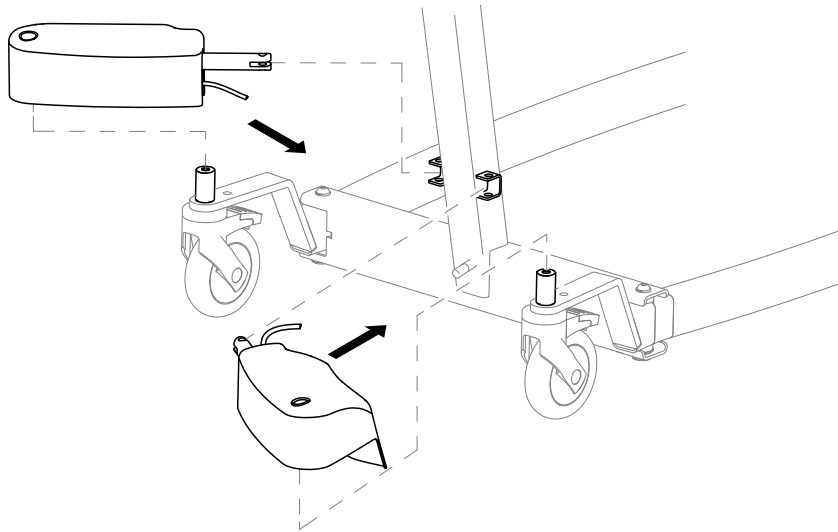
5.5 Replacing a leg actuator without cover



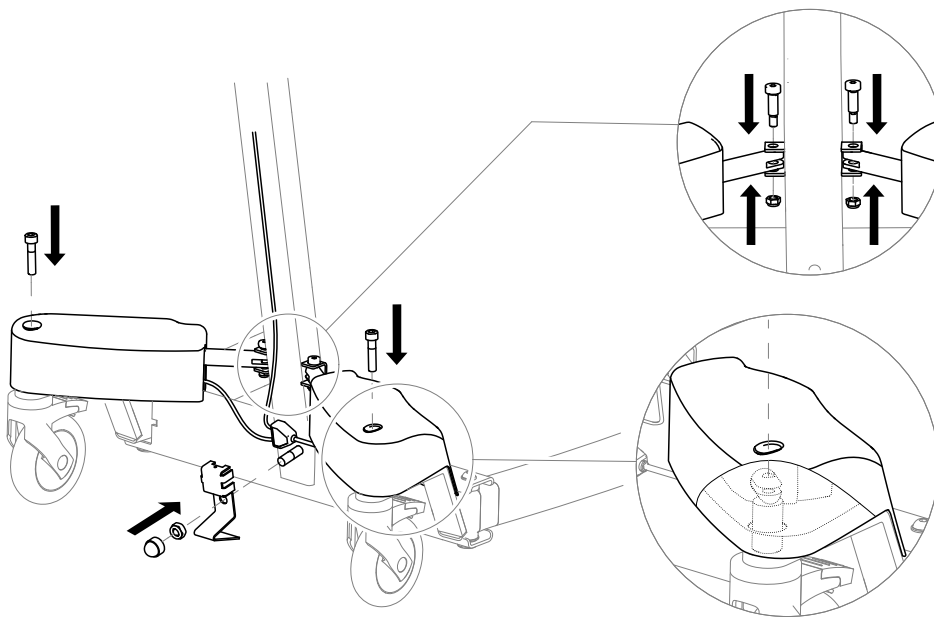
5.6 Replacing a leg actuator with cover



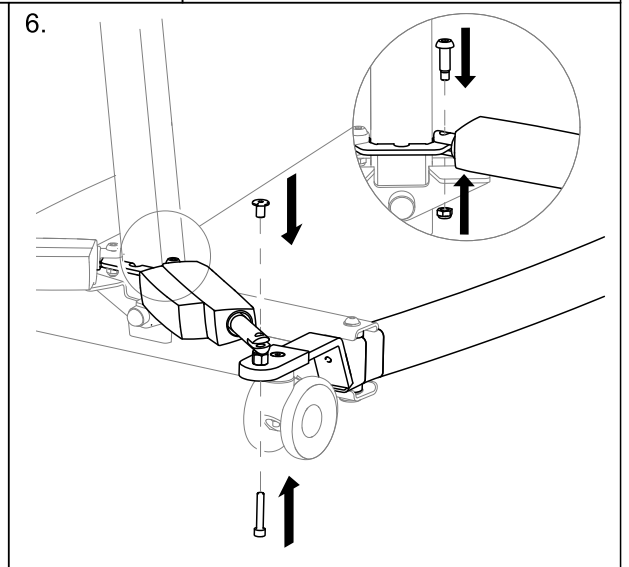
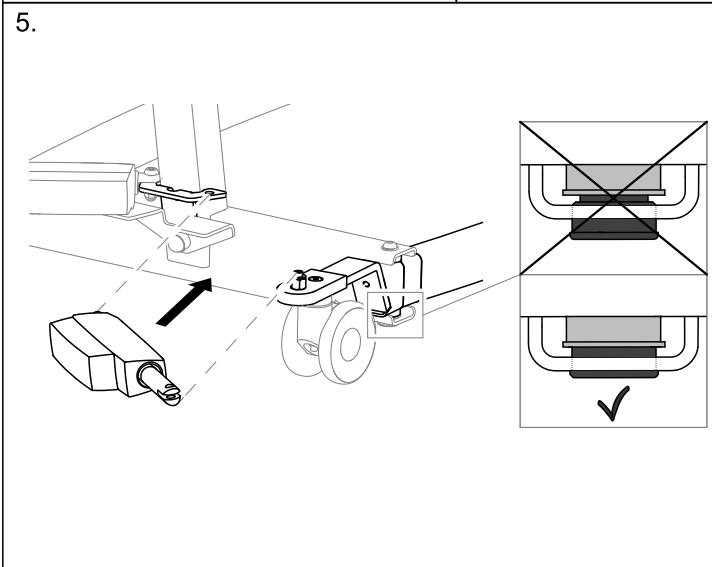
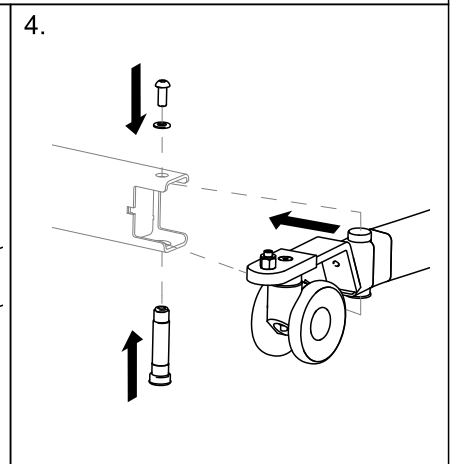
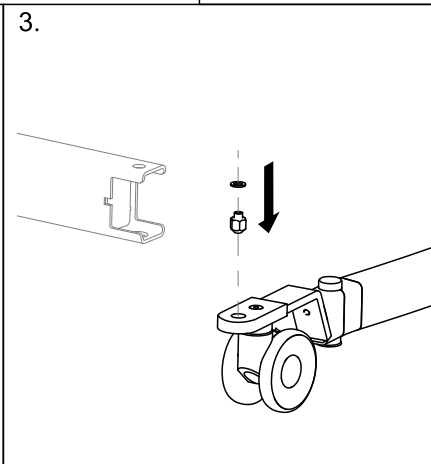
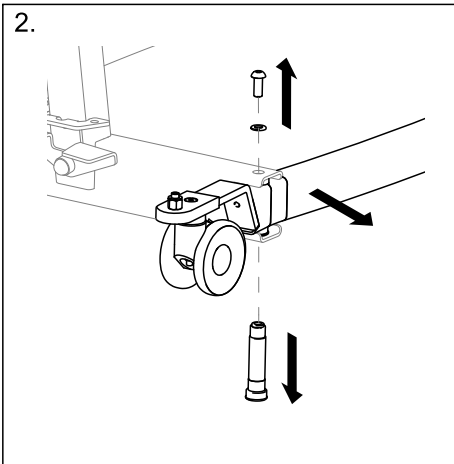
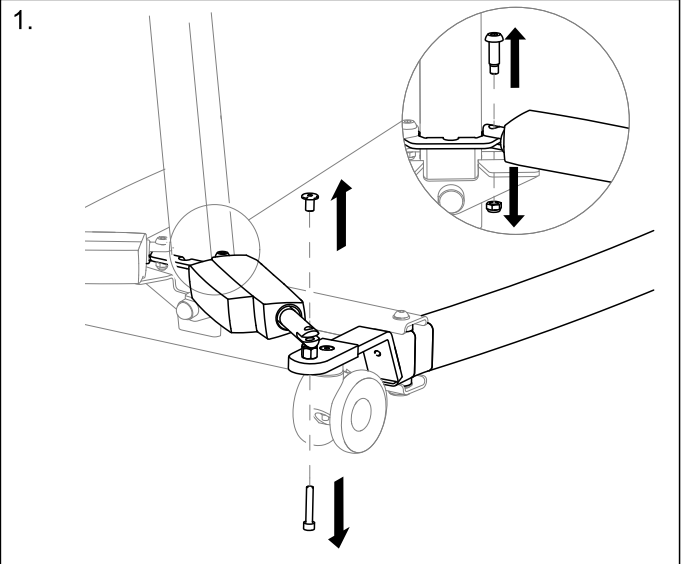
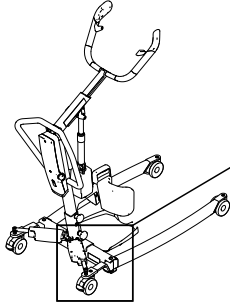
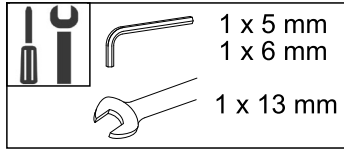
5.



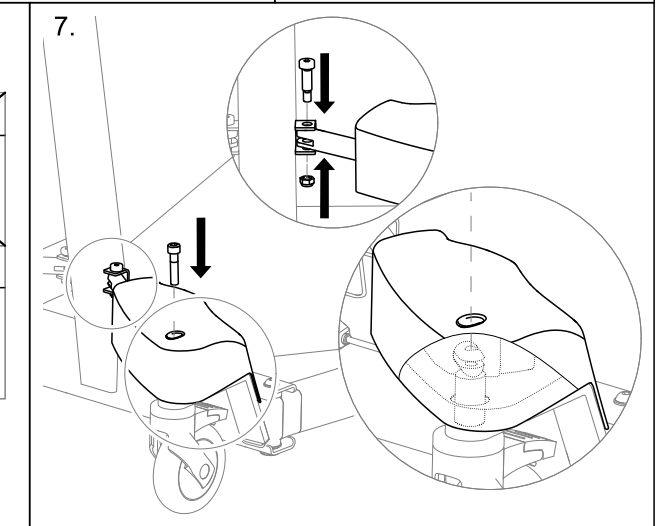
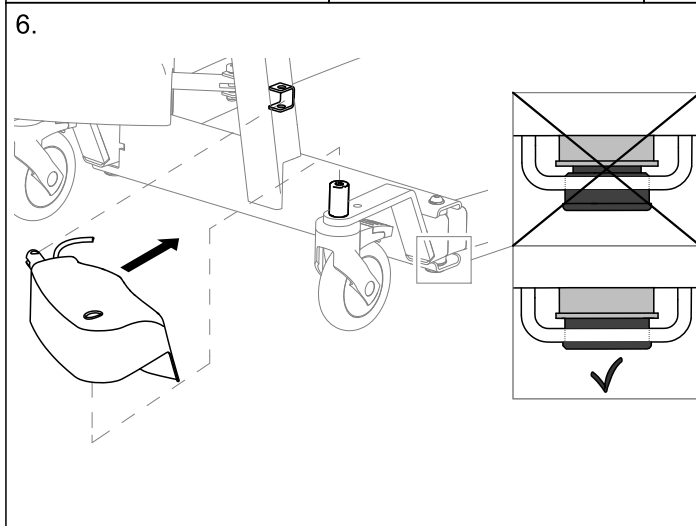
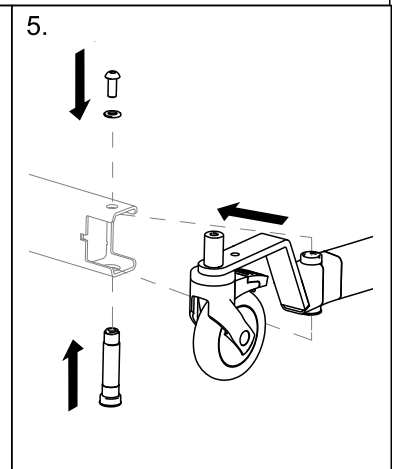
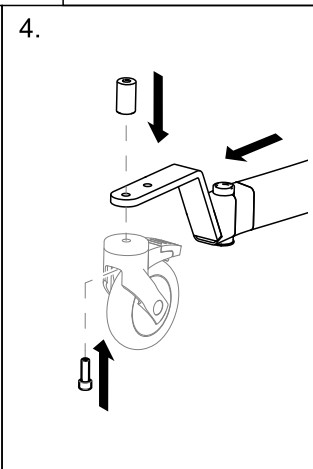
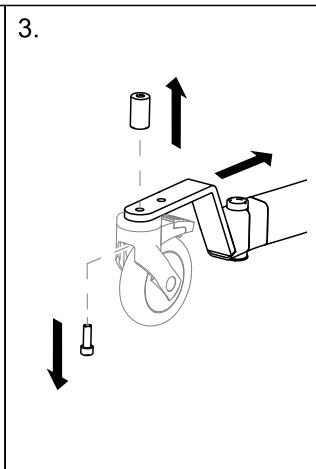
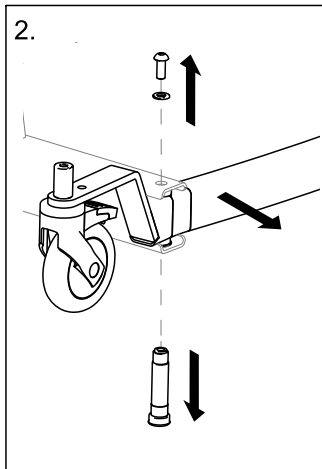
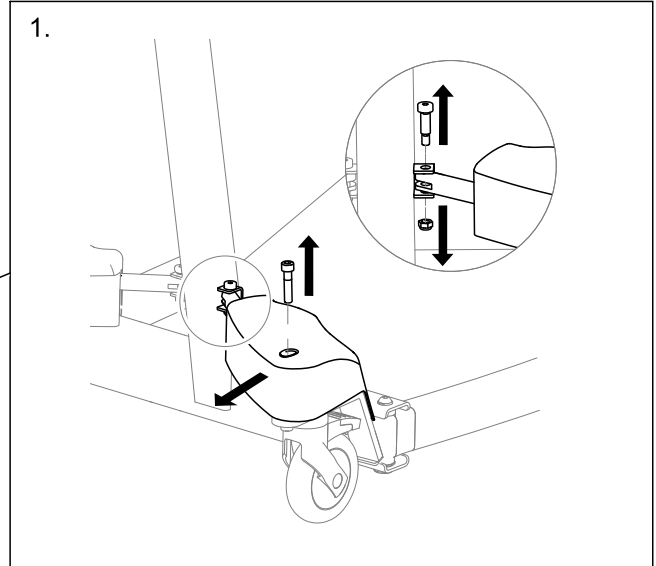
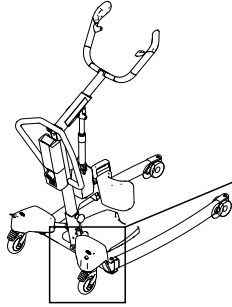
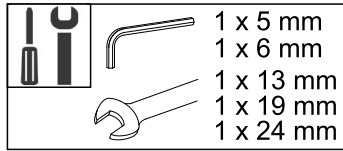
6.



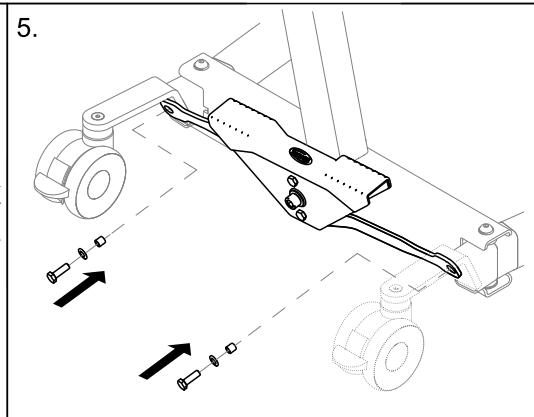
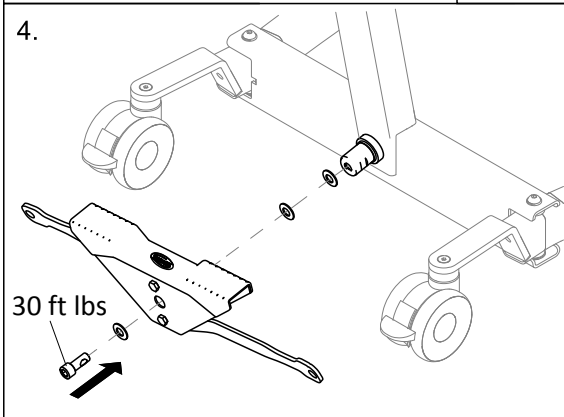
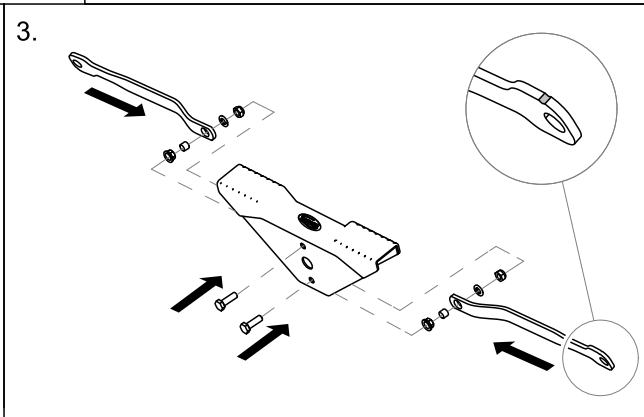
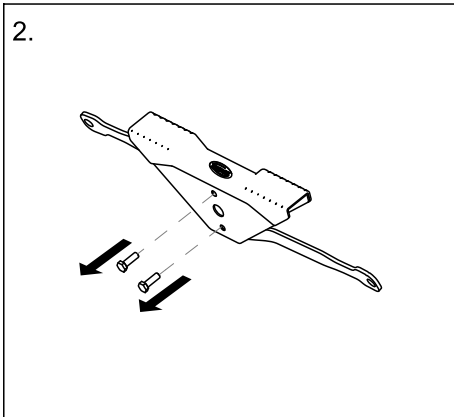
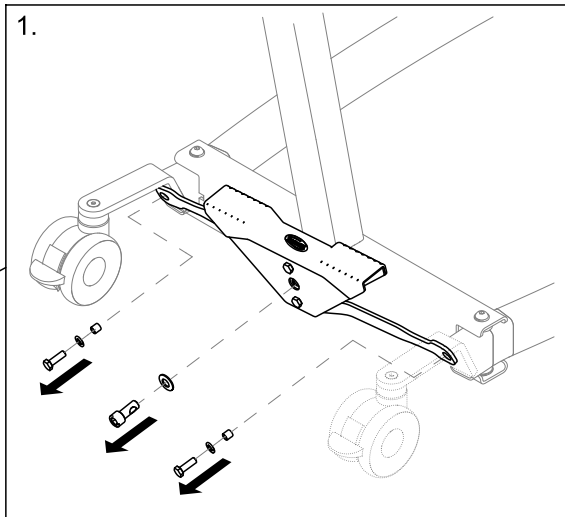
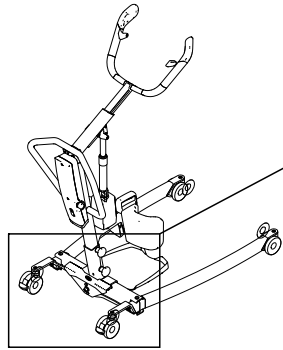
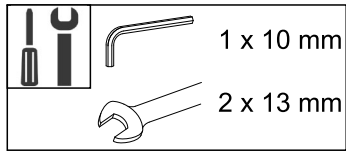
5.7 Replacing electrical legs without actuator cover



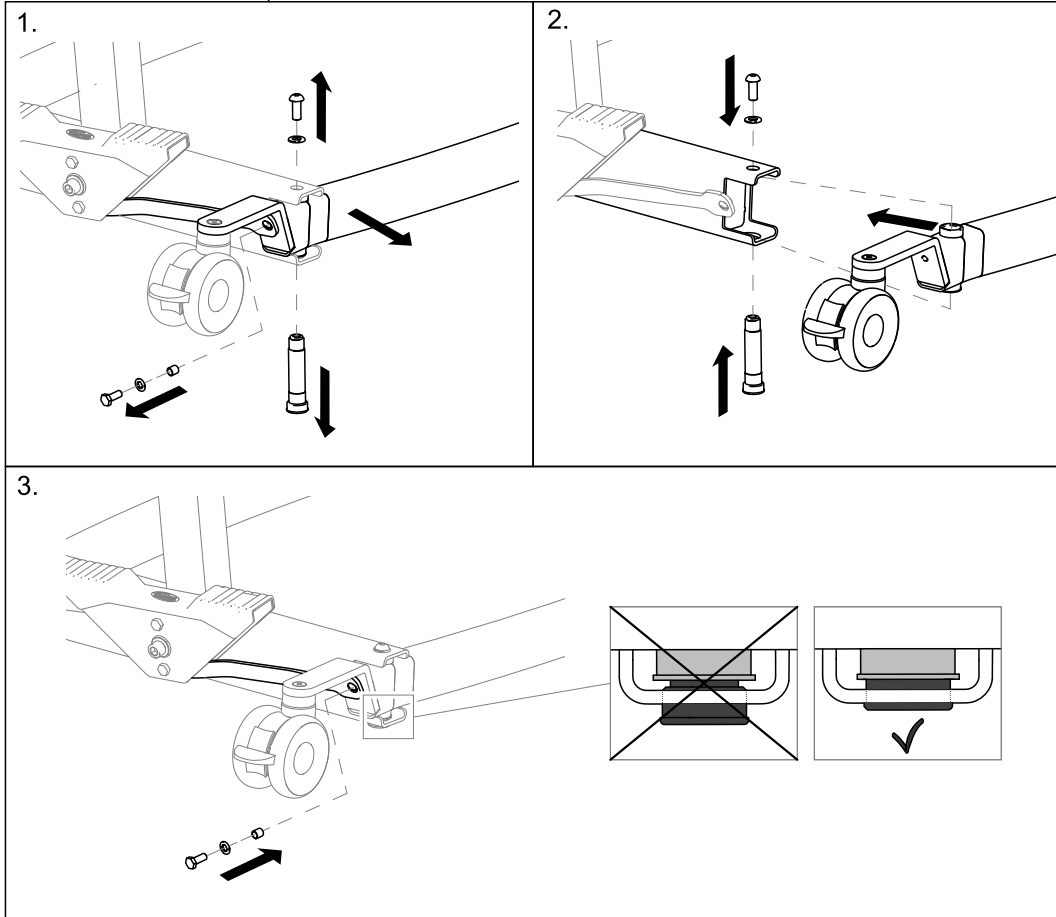
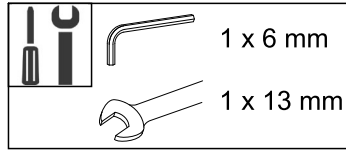
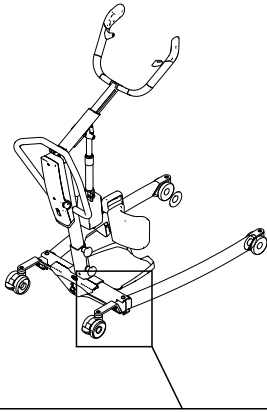
5.8 Replacing electrical legs with actuator cover



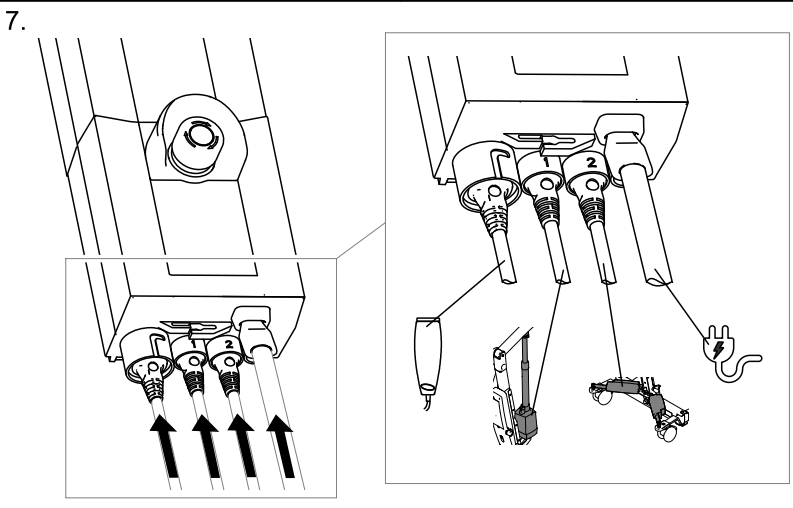
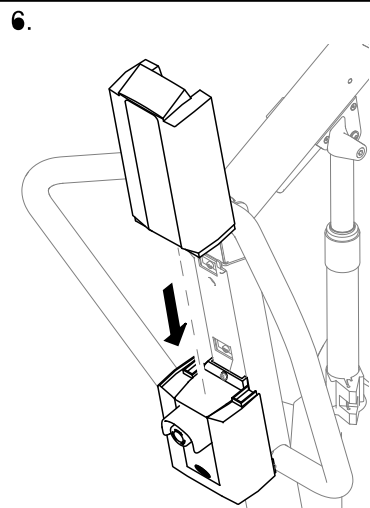
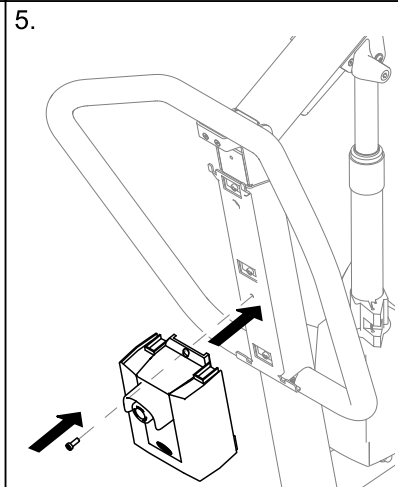
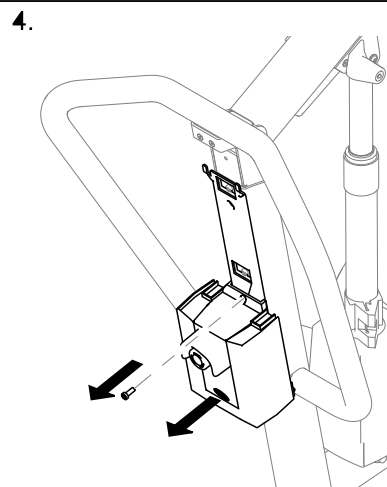
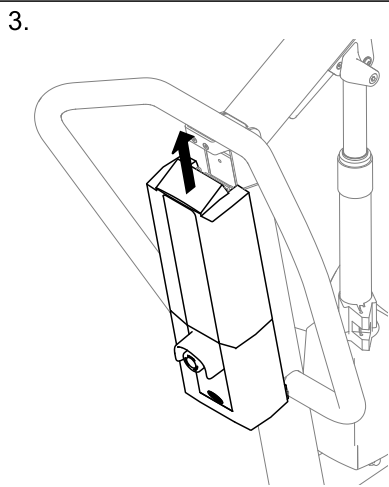
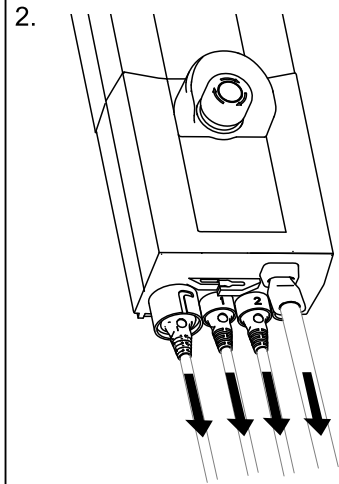
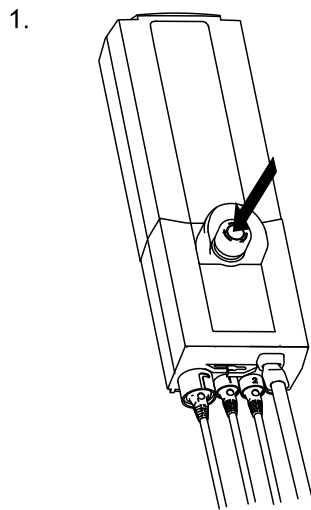
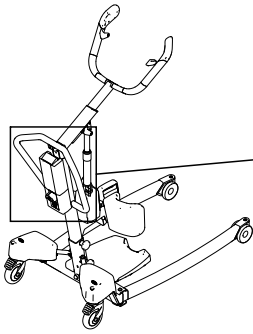
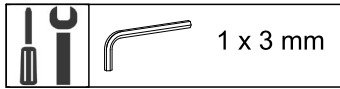
5.9 Replacing the foot pedal and/or rods



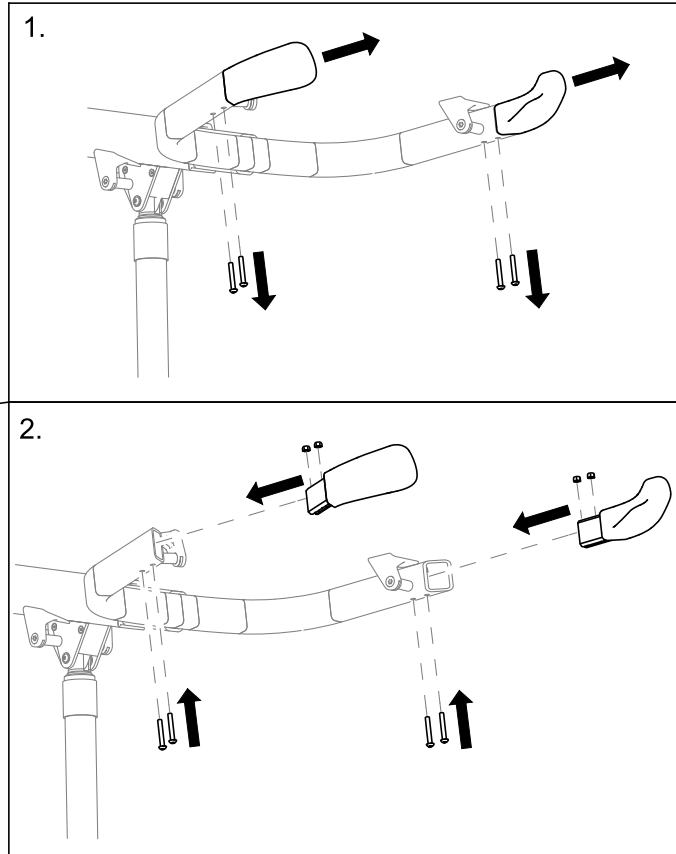
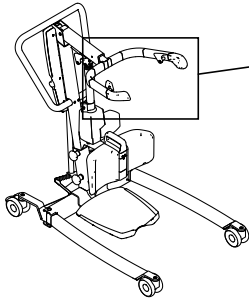
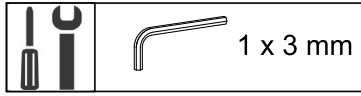
5.10 Replacing manual legs



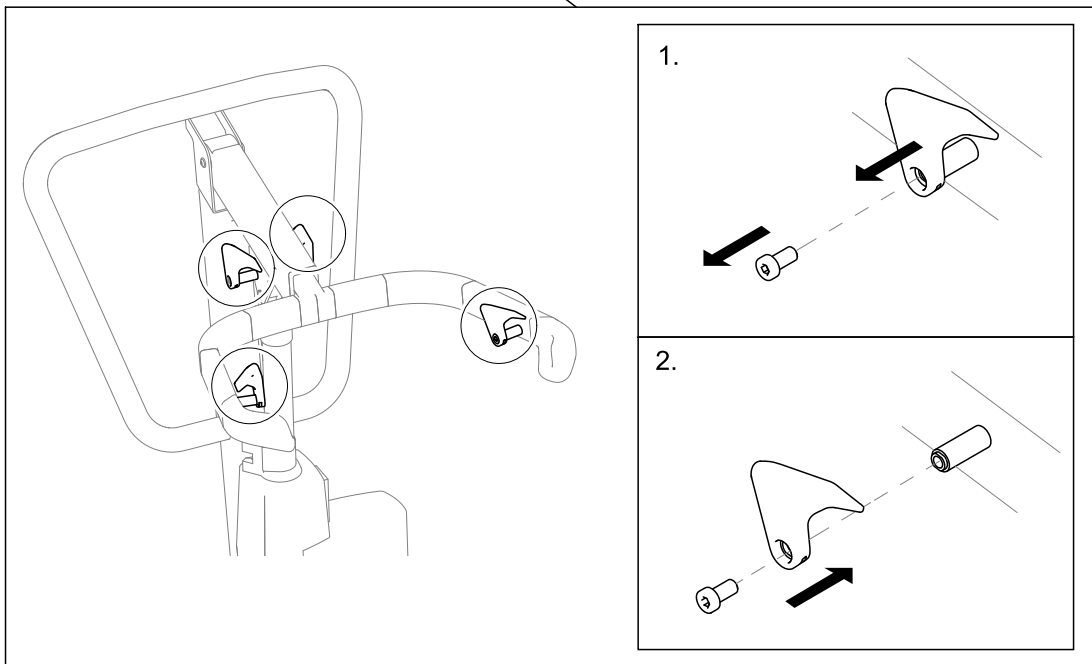
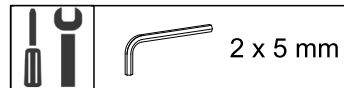
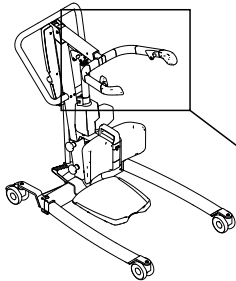
5.11 Replacing the CBJ Care or CBJ2 control unit



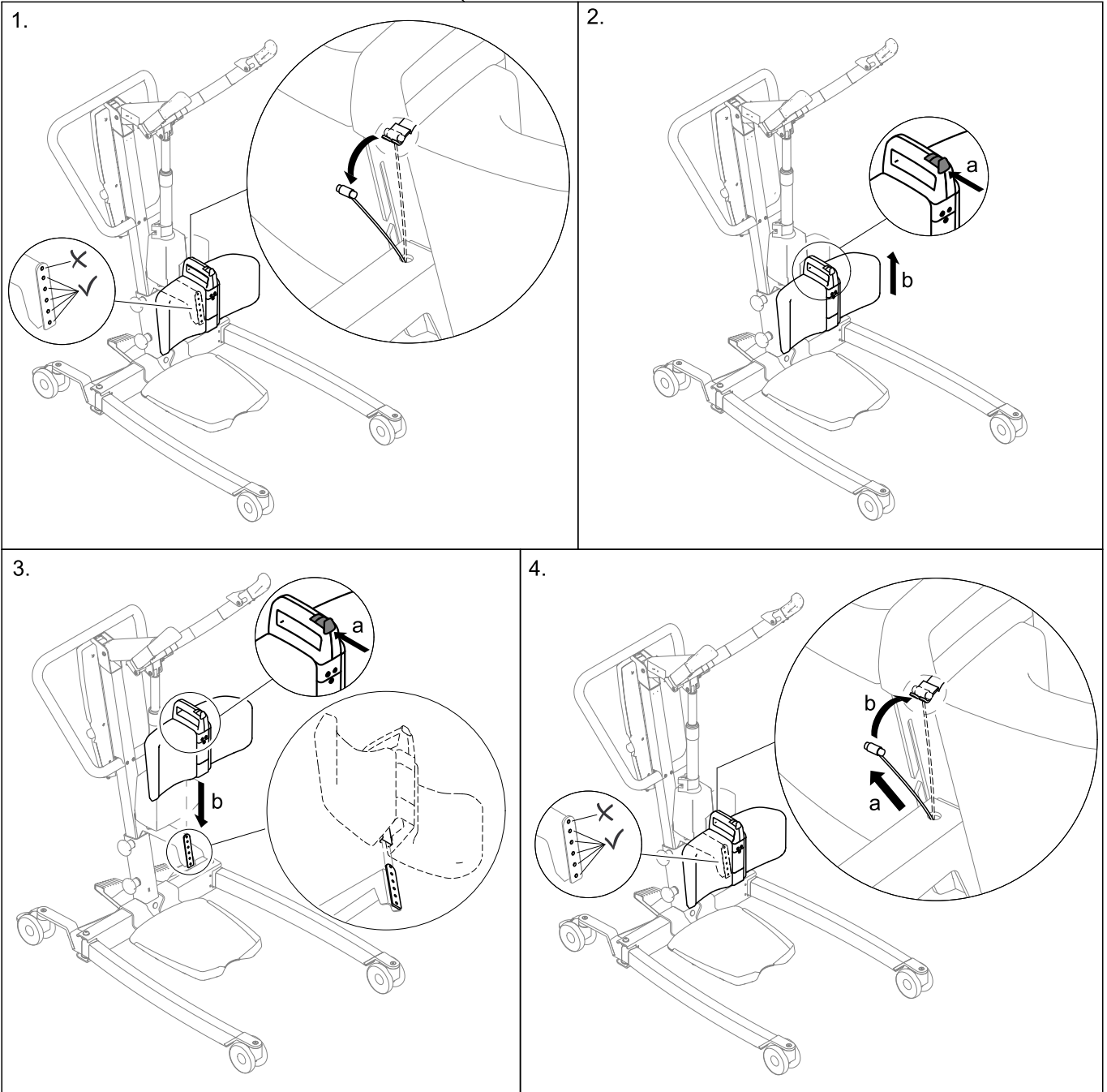
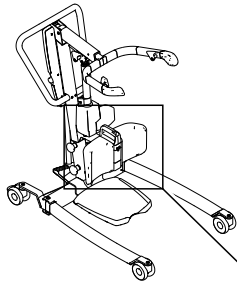
5.12 Replacing the hand grips



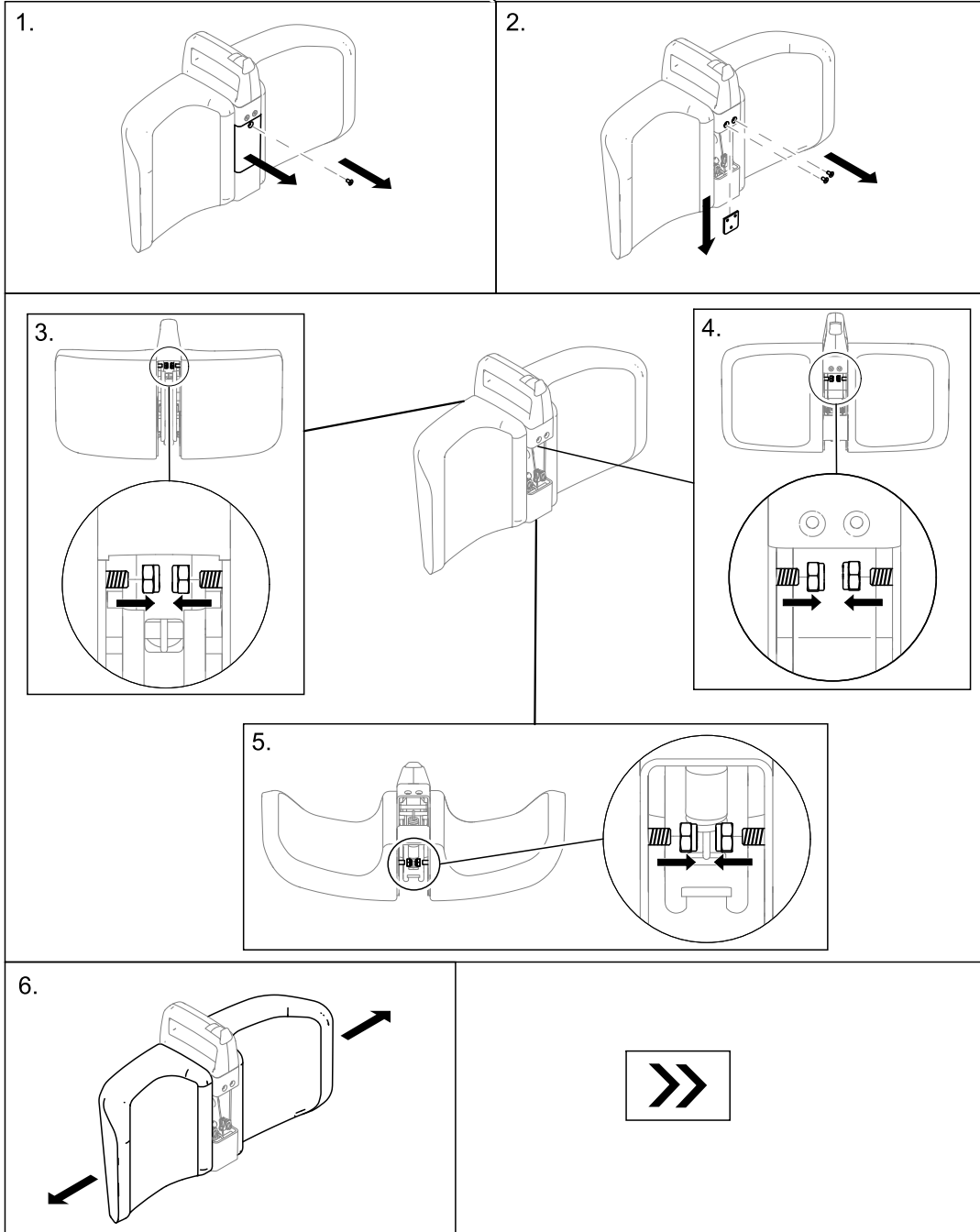
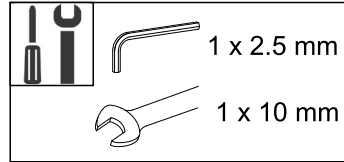
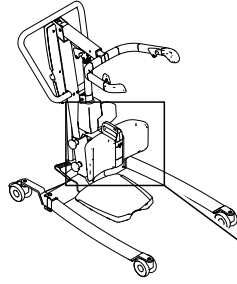
5.13 Replacing the hooks

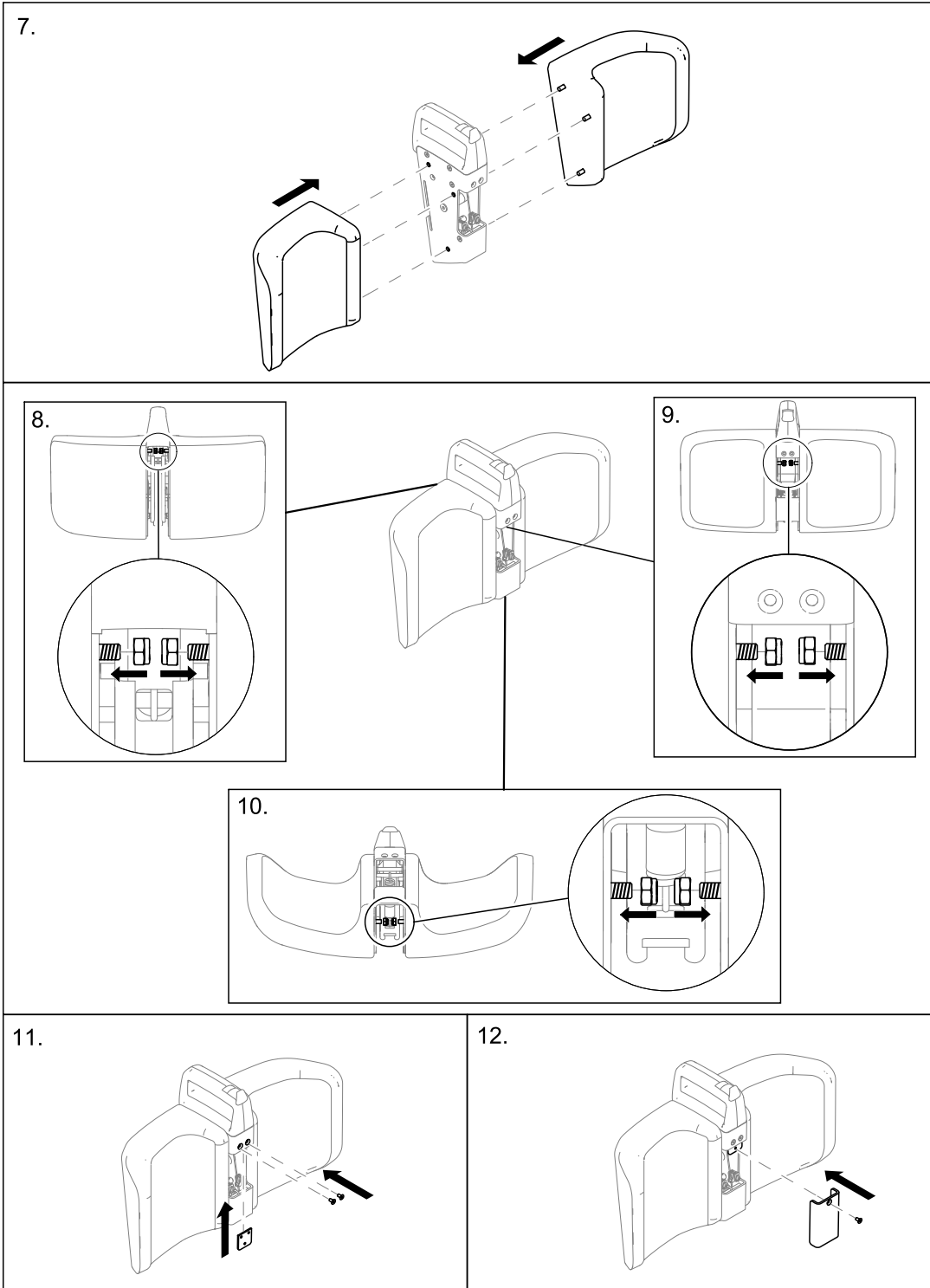


5.14 Replacing the leg support

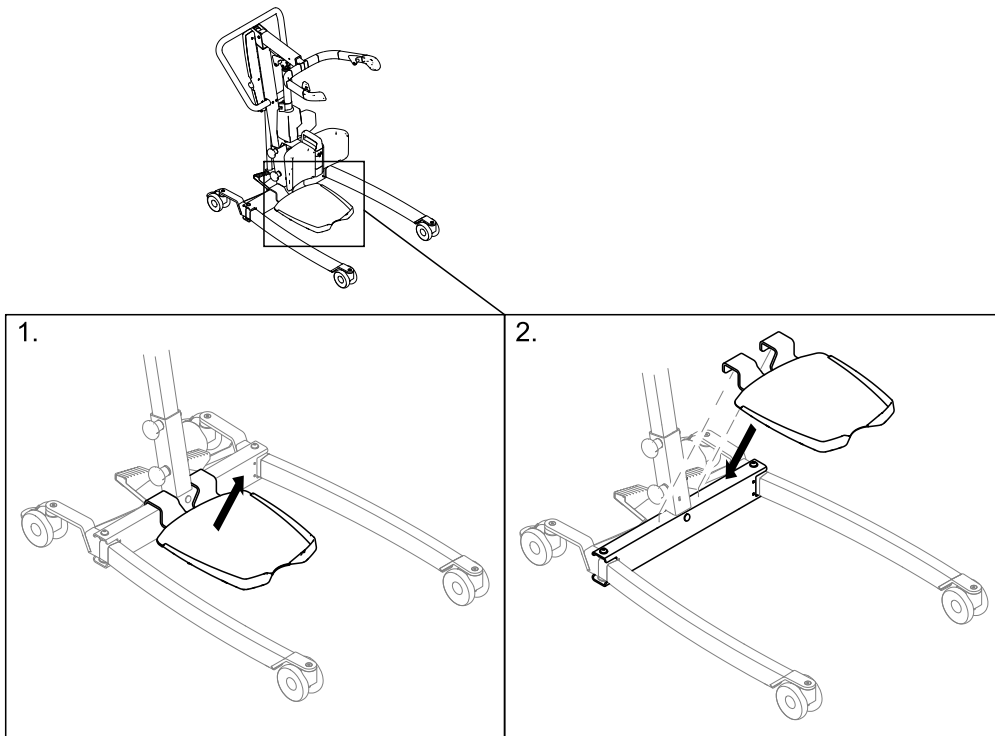


5.15 Replacing the shin cushions

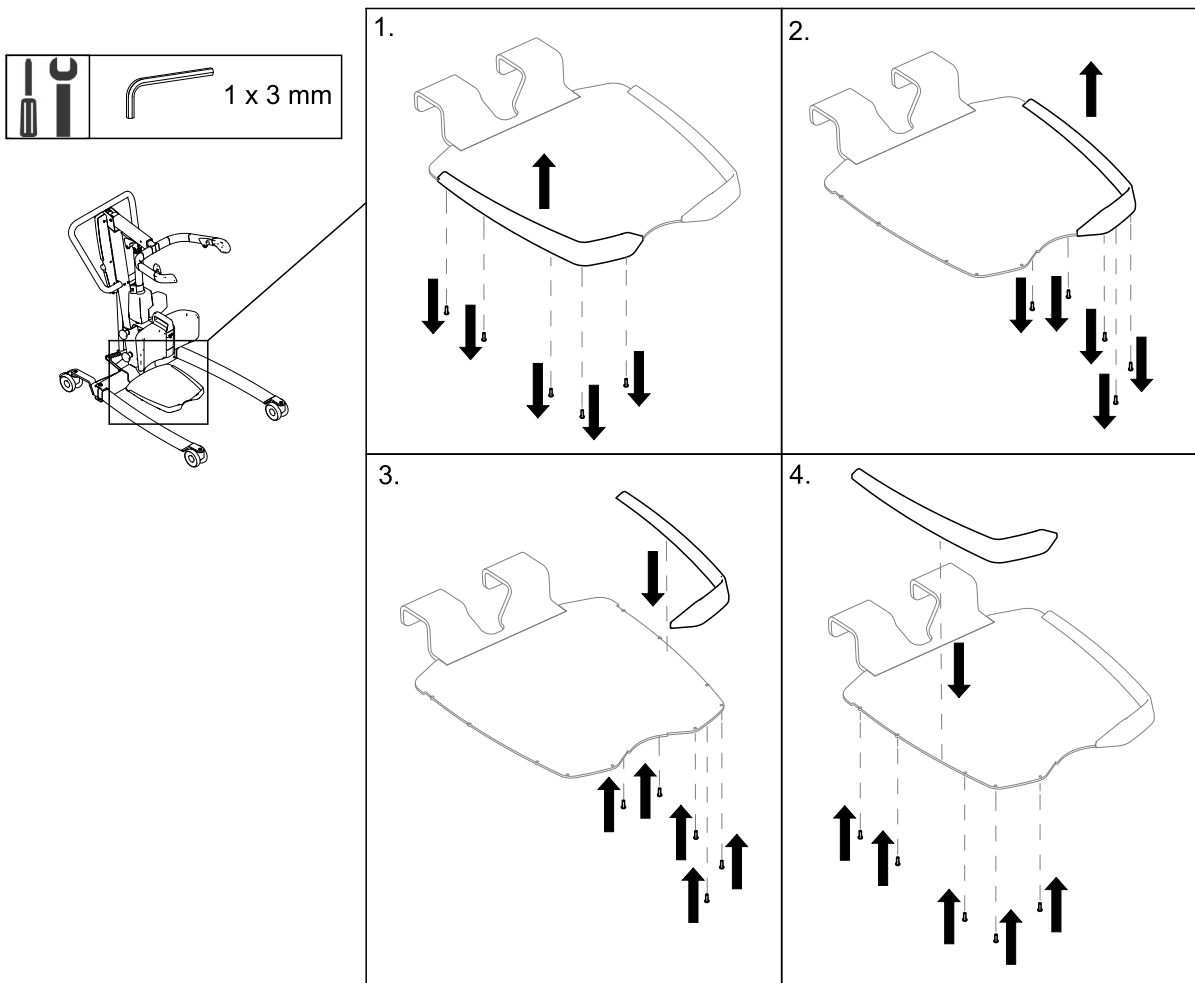




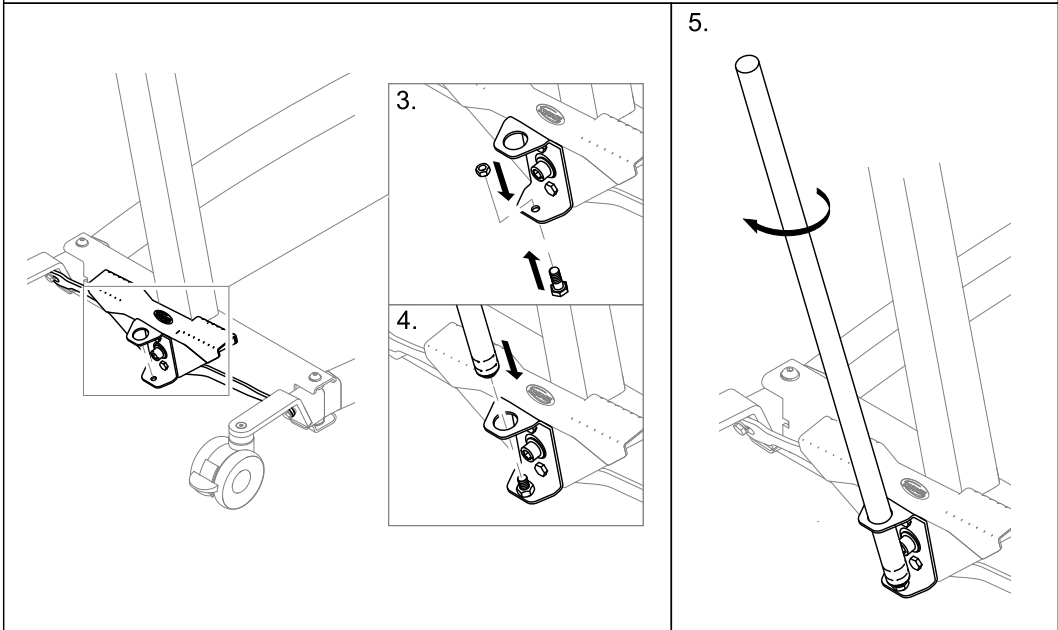
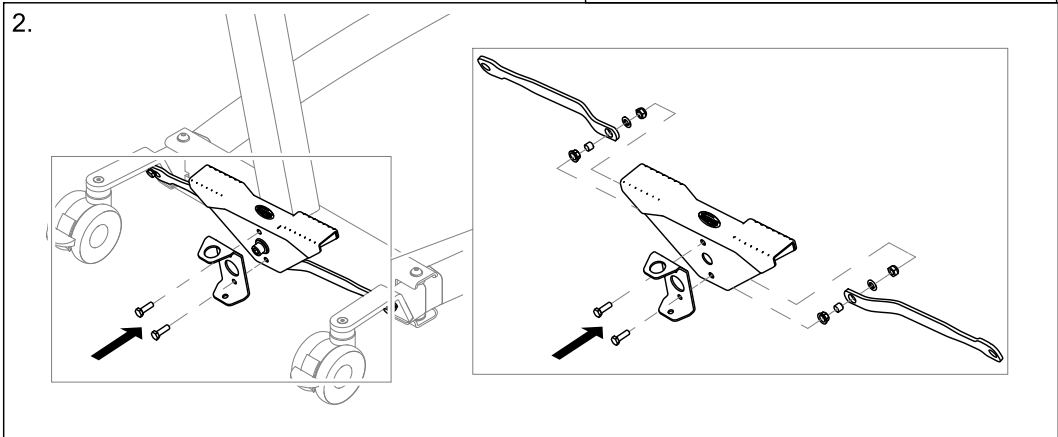
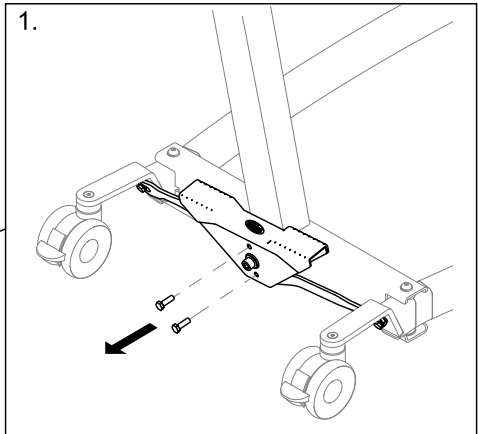
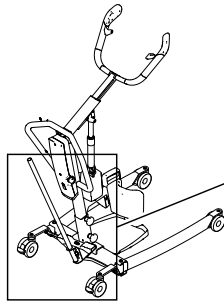
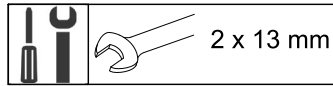
5.16 Replacing the foot plate



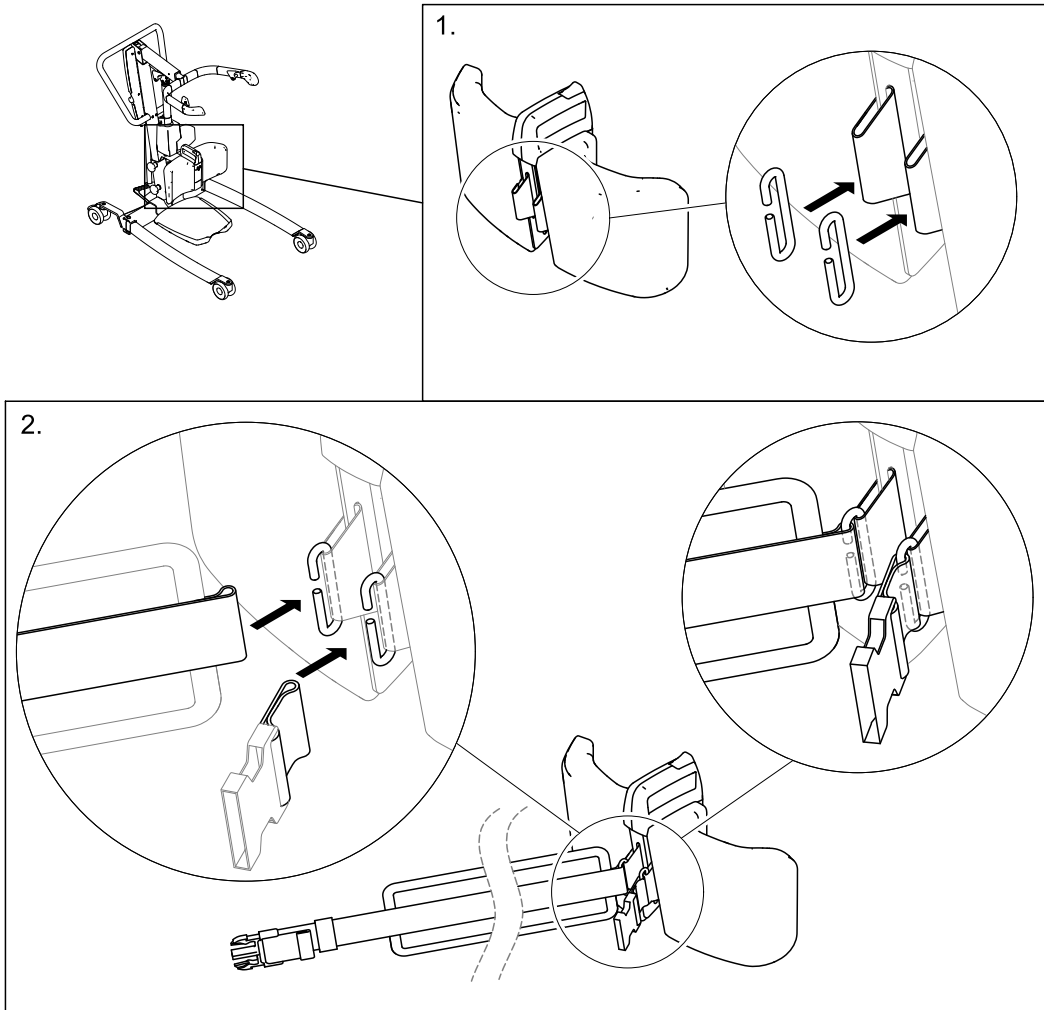
5.17 Replacing the heel block



5.18 Installing the lever for manual leg spreader



5.19 Installing the leg band



Invacare Distributor

USA:

Invacare Corporation
One Invacare Way
Elyria, Ohio USA
44035
800-333-6900
www.invacare.com

Manufacturer:



Invacare Portugal, Lda
Rua Estrada Velha 949
4465-784 Leça do Balio
Portugal

60128756-A 2020-10-28



Making Life's Experiences Possible®



Yes, you can.®