

Skin One Side & Two Side Insulation

Visit jonesstephens.com for full offering.

Specifications

- A NBR/PVC based closed cell, flexible elastomeric foam insulation
- It is environmentally-friendly, free of CFCs, HFCs, HCFCs, PBDEs, formaldehyde, and fibers
- An EPA registered antimicrobial agent is incorporated into the product providing additional protection against mold, fungal and bacterial growth

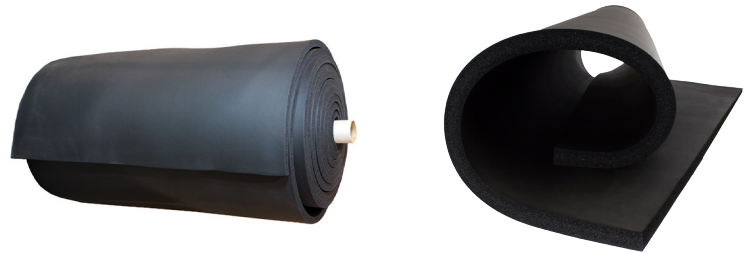
Applications

- Recommended for applications with service temperatures ranging from -297°F (-182°C) to +220°F (+104°C)
- For full adhesion applications (i.e. ductwork), the upper temperature limit is +200°F (+93°C)
- The product is used to retard heat gain and prevent condensation or frost formation on below-ambient applications, including utility and industrial process equipment, tanks, vessels, ducts, and large OD pipes
- It can be used with heat tracing tapes
- It also retards heat loss from medium hot surfaces

Certifications/Listings/Approvals

- ASTM C534 Type 2, Grade 1
- ASTM D1056-00-2B1
- New York City MEA 186-86-M Vol. V
- USDA Compliant
- CFIA Compliant
- RoHS Compliant
- UL 94-5V, V0 Flammability Classification (#E300774)
- ASTM E84 25/50-rated (to 2") - tested to UL 723, NFPA 255 and CAN/ULC S102-03
- FMVSS 302
- FAR 25.853
- NFPA No. 101 Class A Rating
- NFPA 90A, 90B
- MIL-P-15280, Form S
- R-8 (2") meets IECC requirements for Outdoor Ductwork
- UL GREENGUARD® Gold Certified
- Meets energy code requirements of ASHRAE 90.1 and 189.1

Job Name	_____
Location	_____
Engineer	_____
Contractor	_____
Tag	_____ PO# _____



Physical Properties	Insulation Sheet	Test Methods
Main Composition	Flame-retarded NBR/PVC-based elastomeric foam	
Thermal Conductivity, Btu-in/hr-ft ² -°F (W/(m-K))	90°F (32°C) Mean Temp = 0.258 (0.0372) 75°F (24°C) Mean Temp = 0.245 (0.0353) 32°F (0°C) Mean Temp = 0.235 (0.0339)	ASTM C177 ASTM C177 ASTM C177
Density	3-6 lb/ft ³	ASTM D1667
Operating Temperature Range	-40°F (-40°C) to +220°F (104°C)	ASTM C534
Water Vapor Permeability (Dry Cup)	<0.01 perm-in	ASTM E96
Water Absorption (Volume Change)	0%	ASTM C209
Flame Spread / Smoke Development (up to 2" wall)	<25/50	ASTM E84
Flammability	Self-Extinguishing	ASTM D635
Dimensional Stability	<7% Linear Shrinkage	ASTM C534
Hot Surface Performance (250°F for 96 hours)	No Cracking or Delamination	ASTM C411
Ozone Resistance	Pass	ASTM D1171
Odor Emissions	No Objectional Odor	ASTM C1304
Chemical/Solvent/Oil/Grease Resistance	Good	Compatibility data available on request
Flexibility	Excellent Pass: Cold Crack Test at -40° (-40°C)	ASTM C534 ASTM D1056
Mildew Growth Resistance/Air Erosion	Pass	UL 181, ASTM G21
Corrosion Risk	pH Neutral: 6.6±0.04	DIN 1988
Leachable Chlorides	<0.05% water-soluble chloride ions	DIN 1988
UV / Weather Resistance ¹	Good	ASTM G90
Sound Transmission Class (1")	13	ASTM E90

^{*}For applications below -40°F (-40°C), contact technical support.

¹Outdoor applications should be protected with an approved coating or cladding for optimum performance.

THICKNESS RECOMMENDATIONS - TO PREVENT CONDENSATION

Service Temperature	50°F (10°C)			35°F (2°C)			0°F (-18°C)			-20°F (-29°C)		
	Mild	Normal	Severe	Mild	Normal	Severe	Mild	Normal	Severe	Mild	Normal	Severe
Flat Surface or Pipe ≥48"	1/8"	1/2"	3/4"	1/4"	3/4"	1-1/2"	1/2"	1"	2"	3/4"	1-1/2"	2-1/2"

Thickness listed for the specified ranges will prevent condensation on indoor piping under the defined design conditions. Normal 85°F and 70% RH. Mild: Most air conditioned spaces and arid climates: 80°F and 50% RH. Severe: Areas where excessive moisture is introduced or in poorly ventilated areas where the temperature may be depressed below the ambient: 90°F and 80% RH. Contact technical support for additional information.

SOUND ABSORPTION COEFFICIENTS AT FREQUENCY (Hz) (ASTM C423)

Thickness	125	250	500	1000	2000	4000	NRC
1/2" (12mm)	0.03	0.02	0.06	0.10	0.22	0.27	0.10
1" (25mm)	0.00	0.07	0.13	0.59	0.20	-0.05	0.25
1-1/2" (38mm)	0.00	0.15	0.81	0.29	0.31	0.27	0.40
2" (50mm)	0.22	0.65	0.48	0.54	0.47	0.45	0.55

"R" VALUES (ALL SIZES ARE NOMINAL)

3/8"	1/2"	3/4"	1"	1-1/2"	2"
1.5	2	3	4	6	8