

► **Code Number**
3918774

► **Description**
Concealed Water Closet Flushometer, for wall hung stainless steel back inlet bowls.

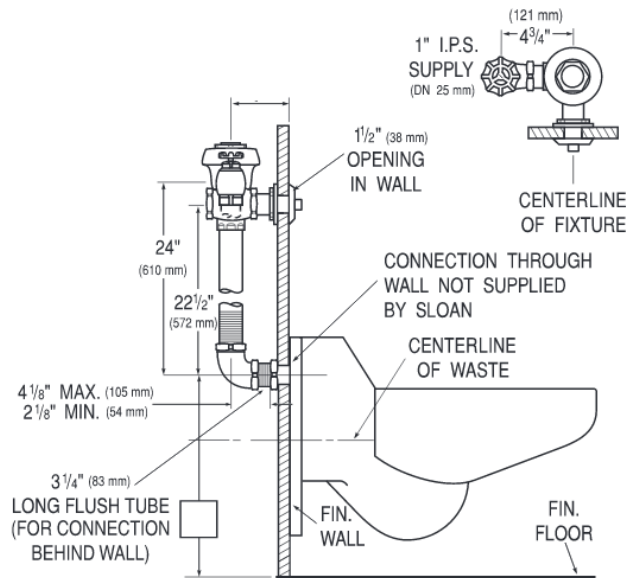
► **Flush Cycle**
1.28 gpf/4.8 Lpf

► **Specifications**

- Vacuum Breaker
 - Chrome Plated Exposed Flushometer Parts
 - Non-Hold-Open Push Button, Fixed Metering Bypass and No External Volume Adjustment to Ensure Water Conservation
 - Metal Direct Acting, Non-Hold-Open Push Button with a Triple Seal Handle Packing
 - PERMEX® Synthetic Rubber Diaphragm w/Dual Filtered Fixed Bypass
 - Flush accuracy controlled by CID® technology
- Valve Body, Cover, Tailpiece and Control Stop shall be in conformance with ASTM Alloy Classification for Red Brass. Valve shall be in compliance to the applicable sections of ASSE 1037 and ANSI/ASME 112.19.2.
- 1" I.P.S. Wheel Handle Bak-Chek® Angle Stop
 - Diaphragm, Stop Seat and Vacuum Breaker to be molded from PERMEX® rubber compound for Chloramine resistance
 - Elbow Flush Connection and Coupling for 1½" NPT Back Inlet (for connection in the pipe chase — flush connection through the wall not provided by Sloan)

► **Variations**
10 3/4 LDIM

► **L Dimension**
Specify the "L" Dimension for the proper length of the Handle Assembly and Flush Connection. The "L" Dimension is equal to the Wall Thickness (to the nearest whole inch) plus 2¾" (70 mm).



► **Compliance & Certifications**



Made In The
USA



This space for Architect/Engineer Approval