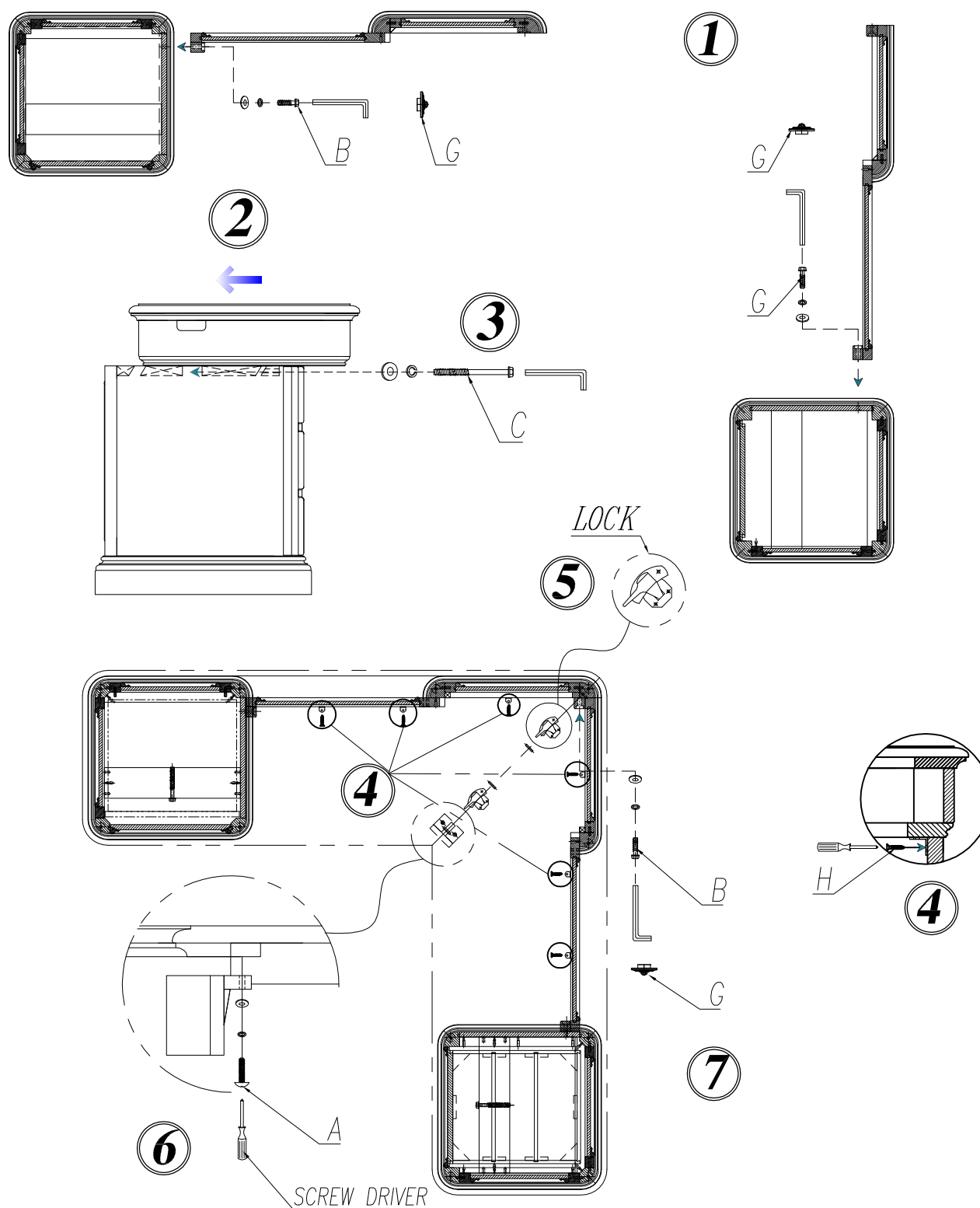


X A HOWARD MILLER COMPANY

7-9147 L - DESK

NO.	Hardware List	Qty
A	Bolt 5/16" * 1-3/8"	1
B	Bolt 5/16" * 1-25/32" L	6
C	Bolt 5/16" * 5-7/8" L	2
D	Lock Washer 5/16" Dia	9
E	Flat Washer 5/16" Dia	9
F	Wrench 3/16" Dia * 4-3/4" L	1
G	Bolt Cover Caps	6
H	Screw	6



1. Assemble left pedestal & left modesty panel with Flat Washer (E), Lock Washer (D), Bolt (B) by using Wrench (F), and cover with the Bolt Cover Caps (G), as step 1.
2. Assemble right pedestal & right modesty panel with Flat Washer (E), Lock Washer (D), Bolt (B) by using Wrench (F), and cover with the Bolt Cover Caps (G), as step 1.
3. Place the left top assembly on the left pedestal and modesty panel assembly. As shown in the side view the top assembly is set a little forward on the pedestal then pushed back to lock the french cleats.
4. Open top drawer on the left pedestal assembly to secure the left top assembly to the left pedestal with bolt (C), lock washer (D), and flat washer (E), using wrench (F). Shown in step 3.
5. Place the right top assembly on the right pedestal and modesty panel assembly. As shown in the side view the top assembly is set a little forward on the pedestal then pushed back to lock the french cleats.
6. Open top drawer on the right pedestal assembly to secure the right top assembly to the right pedestal with bolt (C), lock washer (D), and flat washer (E), using wrench (F). Shown in step 3.
7. Attach left modesty panel to left top assembly and right modesty panel to right top assembly with screw (H) as shown in step 4.
8. Place the left and right assemblies in their intended final location. the desk cannot be moved after the left and right assemblies are connected.
9. Lock the top panel locks underneath the two top assemblies, as step 5.
10. Assemble the right and left modesty panels from under the desk with bolt (A), lock washer (D), and flat washer (E).
11. Attach the wood cleat between the drop front drawers with Flat Washer (E), Lock Washer (D), Bolt (A) by using a Screw Driver, shown in step 6.