





## Making connections

**WARNING: TO AVOID FIRE, SHOCK OR DEATH, TURN OFF POWER AT THE CIRCUIT BREAKER.**

If your wiring matches the wiring shown on page 6, Example 1:

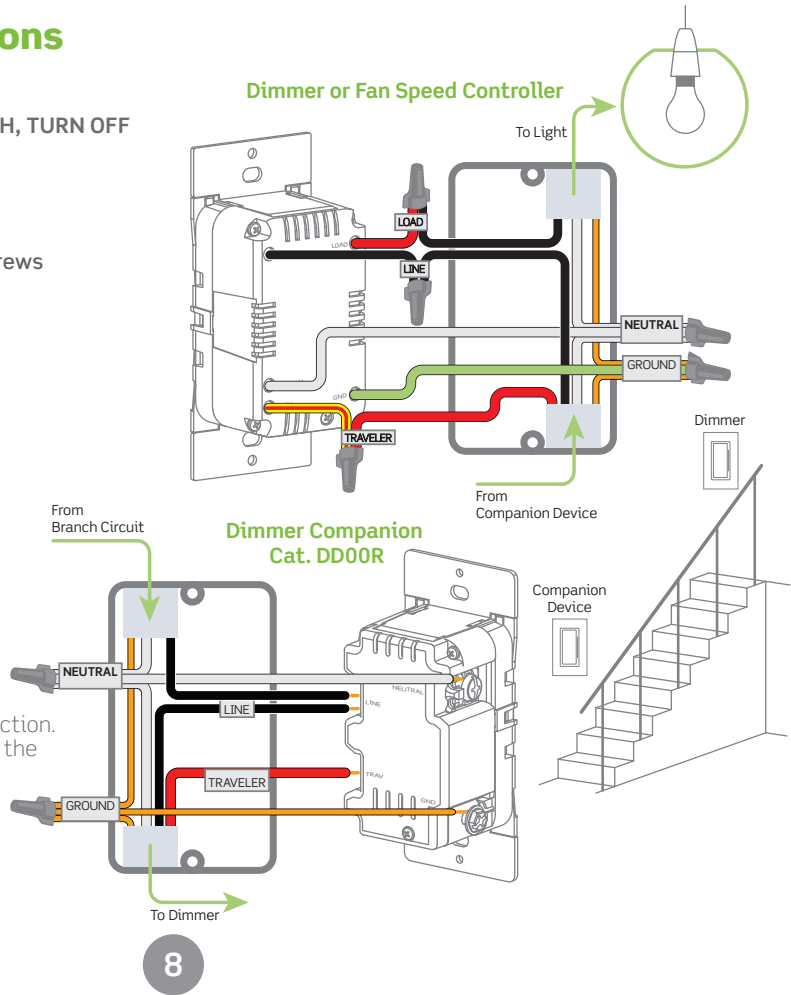
Connect wires to the Dimmer's terminal screws or leads using wire connectors as follows:

Line (Hot) - Black  
Neutral - White  
Load - Red  
Traveler (TRAV) - Yellow with a Red stripe  
Ground (GND) - Green

Connect wires to the Dimmer Companion's terminal screws as follows:

Line (Hot) - Black (BK)  
Neutral - White (WH)  
Traveler - Yellow/Red (YL/RD)  
Ground (Copper Wire) - Green

**NOTE:** Most dimmers require a Neutral connection. It is important to install the dimmer in the box with the feed for the Load.



8



## Making connections

(continued)

**WARNING: TO AVOID FIRE, SHOCK OR DEATH, TURN OFF POWER AT THE CIRCUIT BREAKER.**

If your wiring matches the wiring shown on page 6, Example 2:

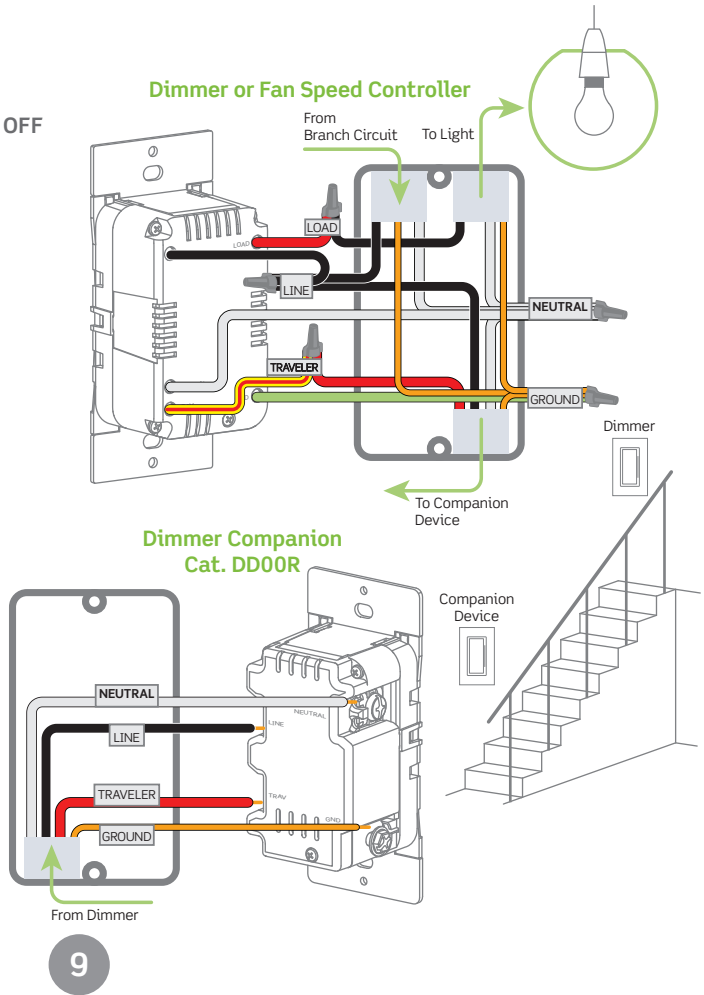
Connect wires to the Dimmer's terminal screws or leads using wire connectors as follows:

Line (Hot) - Black  
Neutral - White  
Load - Red  
Traveler (TRAV) - Yellow with a Red stripe  
Ground (GND) - Green

Connect wires to the Dimmer Companion's terminal screws as follows:

Line (Hot) - Black (BK)  
Neutral - White (WH)  
Traveler - Yellow/Red (YL/RD)  
Ground (Copper Wire) - Green

**NOTE:** Most dimmers require a Neutral connection. It is important to install the dimmer in the box with the feed for the Load.

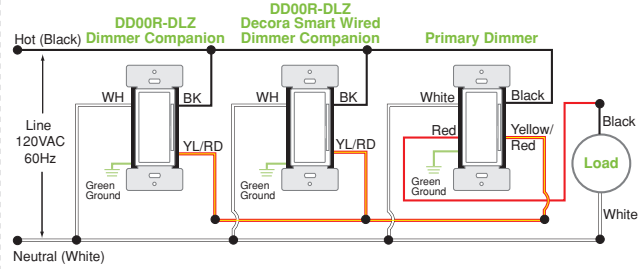


9



## Additional control locations

For multi-location installations with more than one companion device, ensure each one is connected to Line, Neutral and the YL/RD Traveler, which is used to communicate the button presses and LED status.

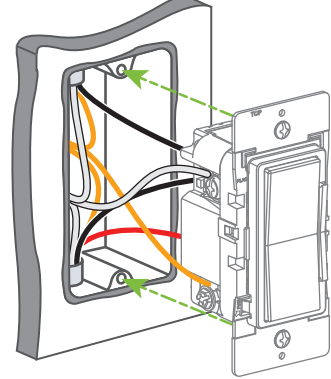


10

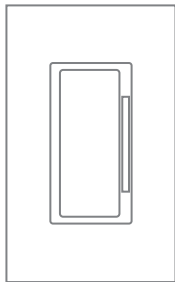


## Install and test

1. Gently push wires into wallbox. Do not overtighten wallbox screws.



2. Install wallplate base and snap on Decora wallplate.



Restore power and turn lights or fan ON. If light(s) do not turn on, see "What to do if..." section on page 13.

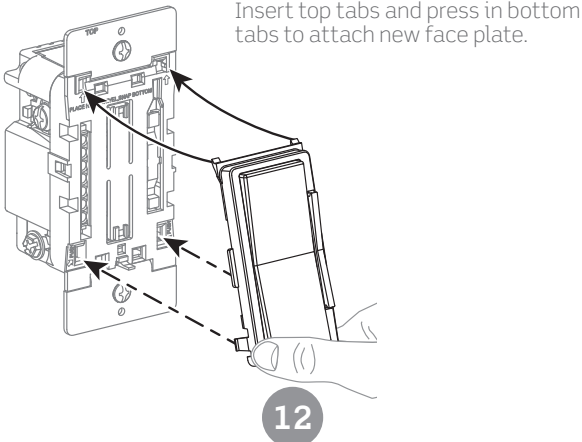
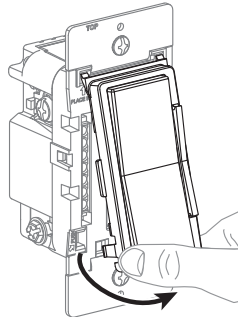
11



## Change the color of your device

Your companion device may include color options. To change color, proceed as follows:

To remove the color face, push in the sides at bottom tabs and pull outward to release.



Insert top tabs and press in bottom tabs to attach new face plate.

12



## What to do if...

**All connections required have not been made:**

- Check the "Identify your wires" section on page 6 to ensure all connections have been made.
- If your wallbox contains a different wiring configuration, contact Leviton Technical Support or consult an electrician.

**Lights are flickering:**

- Lamp has a bad connection.
- Wires not secured firmly under terminal screws of primary dimmer, fan speed controller and/or dimmer companion.

**Light does not turn ON and locator light does not turn ON:**

- Circuit breaker or fuse has tripped.
- Lamp is burned out.
- Lamp Neutral connection is not wired.

**Remote does not operate lights:**

- Ensure that total wire length does not exceed 300 ft (90 m).
- Ensure primary dimmer is installed properly.
- Verify the companion device is installed on the line side of the 3-way application.
- Verify the companion device is being using with the primary dimmer or fan speed control (refer to the "Compatibility" chart on page 2).

13



## Safety first

**WARNINGS:**

- **TO AVOID FIRE, SHOCK OR DEATH: TURN OFF POWER AT CIRCUIT BREAKER OR FUSE AND TEST THAT POWER IS OFF BEFORE WIRING!**
- To be installed and/or used in accordance with electrical codes and regulations.
- If you are unsure about any part of these instructions, consult an electrician.

**CAUTIONS:**

- Decora Smart and Decora Digital dimmers and switches are not compatible with standard 3-way or 4-way switches. They must be used with compatible Decora Smart Companion devices for multi-location switching.
- Use this device **WITH COPPER OR COPPER CLAD WIRE ONLY.**
- Use only one (1) Decora Digital/Decora Smart dimmer or switch in a multi-location circuit with up to 4 companion devices.
- **NOTE:** The remote(s) will turn the light on at the brightness level selected at the dimmer.
- Maximum wire length from the primary dimmer or fan speed control to all installed companion devices cannot exceed 300 ft (90 m).
- Clean with a damp cloth. **DO NOT** use chemical cleaners or disinfecting products, including foggers, sprays or other types of atomized cleaning agents.

14

## Limited 5 Year Warranty

For Leviton's limited product warranty, go to [www.leviton.com](http://www.leviton.com). For a printed copy of the warranty, call 1-800-824-3005.

**FOR CANADA ONLY**

For warranty information and/or product returns, residents of Canada should contact Leviton in writing at Leviton Manufacturing of Canada ULC to the attention of the Quality Assurance Department, 165 Hymus Blvd, Pointe-Claire (Quebec), Canada H9R 1E9 or by telephone at 1 800 405-5320.

**FCC COMPLIANCE STATEMENT**

The enclosed device complies with Part 15 of the FCC Rules. Operation is subject to the following two conditions: (i.) This device may not cause harmful interference (ii.) This device must accept any interference received, including interference that may cause undesired operation. Any changes or modifications not expressly approved by Leviton could void the user's authority to operate this equipment. This equipment has been tested and found to comply with the limits for a Class B digital device, pursuant to part 15 of the FCC Rules. These limits are designed to provide reasonable protection against harmful interference in a residential installation. This equipment generates uses and can radiate radio frequency energy and, if not installed and used in accordance with the instructions, may cause harmful interference to radio communications. However, there is no guarantee that interference will not occur in a particular installation. If this equipment does cause harmful interference to radio or television reception, which can be determined by turning the equipment off and on, the user is encouraged to try to correct the interference by one or more of the following measures:

- Reorient or relocate the receiving antenna.
- Increase the separation between the equipment and receiver.
- Connect the equipment into an outlet on a circuit different from that to which the receiver is connected.
- Consult the dealer or an experienced radio/TV technician for help.

**FCC CAUTION**

Any changes or modifications not expressly approved by Leviton Manufacturing Co., Inc., could void the user's authority to operate the equipment.

**FCC SUPPLIER'S DECLARATION OF CONFORMITY**

Model DD00R - Wired Dimmer Companion is manufactured by Leviton Manufacturing Co., Inc. 201 N. Service Road, Melville, NY 11747. [www.leviton.com](http://www.leviton.com) This device complies with part 15 of the FCC Rules. Operation is subject to the following two conditions: (1) This device may not cause harmful interference, and (2) this device must accept any interference received, including interference that may cause undesired operation.

**IC STATEMENT**

This device complies with Industry Canada license-exempt RSS standard(s). Operation is subject to the following two conditions: (1) this device may not cause interference, and (2) this device must accept any interference, including interference that may cause undesired operation of the device.

**PATENT INFORMATION**

This product is covered by U.S. Pat. No(s). US 7,683,755; US 8,944,859; US 9,329,607; US 9,543,667; US 9,767,973; US 10,062,528; and corresponding foreign patent(s).

**Copyright and Trademark Information**

Decora, Decora Smart, and Decora Digital are the registered trademarks of Leviton Manufacturing Co., Inc., registered in the U.S., Canada, Mexico and China. Google Play, Android, App Store, Apple iOS, Google Assistant, and IFTTT are the trademarks of their respective owners and any use of such marks by Leviton is under license. Alexa, and related logos are trademarks of Amazon.com, Inc. or its affiliates. Apple, iPhone, iPad, HomeKit, and Siri are trademarks of Apple Inc., registered in the U.S. and other countries. HomeKit is a trademark of Apple Inc. Wi-Fi CERTIFIED logo is a trademark of the Wi-Fi Alliance. Use herein of other third party trademarks, service marks, trade names, brand names and/or product names are for informational purposes only, are/may be the trademarks of their respective owners; such use is not meant to imply affiliation, sponsorship, or endorsement. No part of this document may be reproduced, transmitted or transcribed without the express written permission of Leviton Manufacturing Co., Inc. Copyright 2021 Leviton Mfg. Co., Inc.