
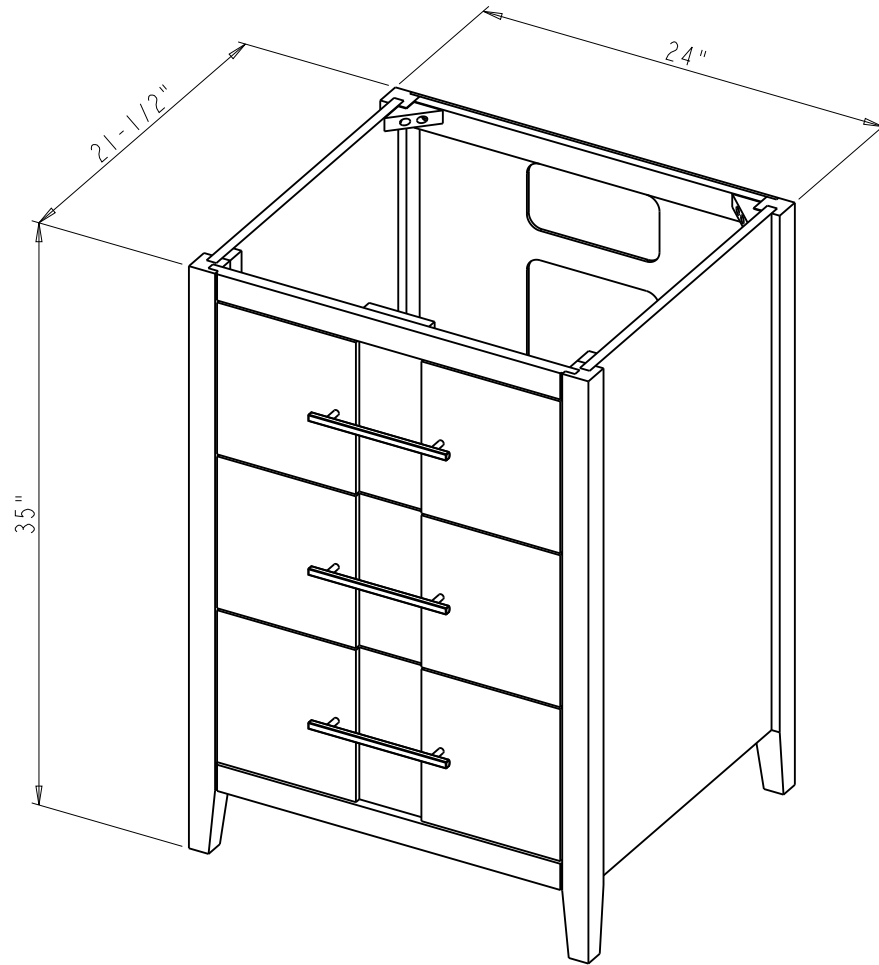



Specification:

1. Material: MDF + Plywood + Birch
2. Finish: See Table
3. Hardware: See Table
4. Slides: USE58-300-18 + USCLIP2ND-4W ( 2 Set )
5. Hinge: 700.0536.25 + 600.1234.05 ( 2 Set )
6. The tolerance is +/- 1/8"

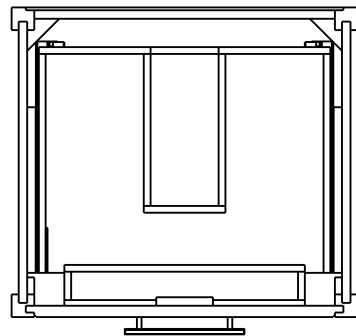
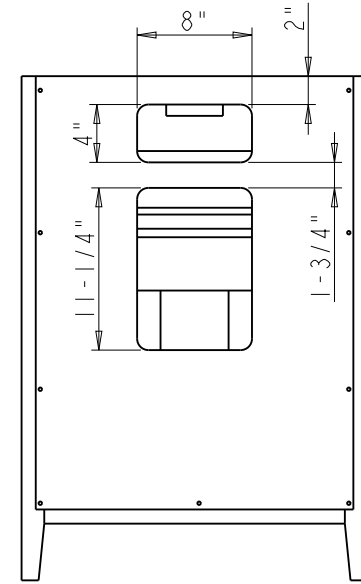
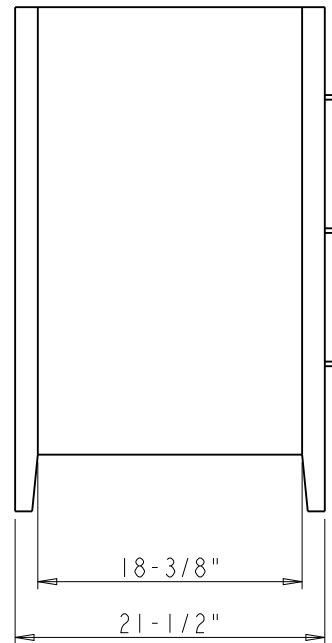
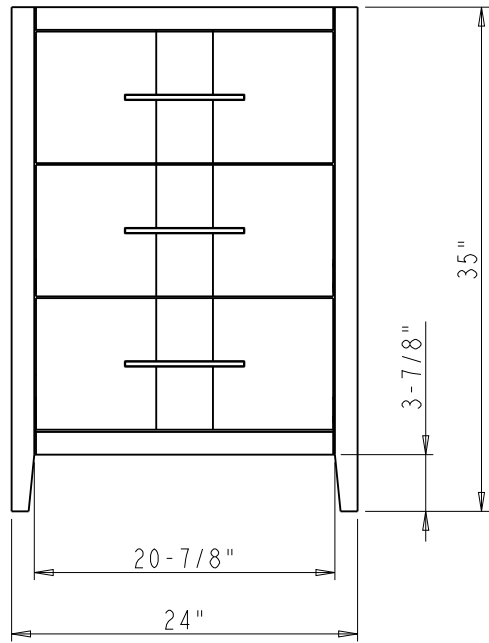
Item number	Finish	Deco Hardware	
		Item number	Qty
VN2KAT-24-BK-NT	Black	845-160PC	3
VN2KAT-24-BL-NT	Blue	845-160SBZ	3
VN2KAT-24-GR-NT	Grey	845-160MB	3
VN2KAT-24-WH-NT	White	845-160MB	3

 <p><b>PROPRIETARY AND CONFIDENTIAL</b></p> <p>THE INFORMATION CONTAINED IN THIS DRAWING IS THE SOLE PROPERTY OF HARDWARE RESOURCES INC. ANY REPRODUCTION IN PART OR AS A WHOLE WITHOUT THE WRITTEN PERMISSION OF HARDWARE RESOURCES INC. IS PROHIBITED.</p> <p>DO NOT SCALE DRAWING</p>	ITEM#: VN2KAT-24		MATERIAL:		
	FINISH:		WEIGHT:		
	TOLERANCE UNLESS OTHERWISE SPECIFIED: X ±0.20 X.X ±0.10 X.XX ±0.05 ANGULAR: ±0.5°		UNITS:	DRAWN BY: <b>Tony.Huang</b>	DATE: Nov-22-21
	SIZE:	APPROVED BY:	RELEASE LEVEL:	REVISION:	



	ITEM#: VN2KAT - 24		MATERIAL:	
	FINISH:		WEIGHT:	
<p><b>PROPRIETARY AND CONFIDENTIAL</b></p> <p>THE INFORMATION CONTAINED IN THIS DRAWING IS THE SOLE PROPERTY OF HARDWARE RESOURCES INC. ANY REPRODUCTION IN PART OR AS A WHOLE WITHOUT THE WRITTEN PERMISSION OF HARDWARE RESOURCES INC. IS PROHIBITED.</p>	UNITS:		DRAWN BY:	DATE:
	TOLERANCE UNLESS OTHERWISE SPECIFIED:		<i>Hugo.cai</i>	
	X ±0.20		APPROVED BY:	DATE:
	X.X ±0.10		RELEASE LEVEL:	
	X.XX ±0.05		REVISION:	
ANGULAR: ±0.5°		SHEET:		DO NOT SCALE DRAWING





	ITEM#: VN2KAT - 24		MATERIAL:		
	FINISH:		WEIGHT:		
<b>PROPRIETARY AND CONFIDENTIAL</b> THE INFORMATION CONTAINED IN THIS DRAWING IS THE SOLE PROPERTY OF HARDWARE RESOURCES INC. ANY REPRODUCTION IN PART OR AS A WHOLE WITHOUT THE WRITTEN PERMISSION OF HARDWARE RESOURCES INC. IS PROHIBITED.	UNITS:		DRAWN BY: <i>Hugo.cai</i>		
	TOLERANCE UNLESS OTHERWISE SPECIFIED: X ±0.20 X.X ±0.10 X.XX ±0.05 ANGULAR: ±0.5°		DATE: Jul-16-21		
	DO NOT SCALE DRAWING		APPROVED BY:		
			DATE:		
		SHEET:		REVISION:	
		RELEASE LEVEL:			

