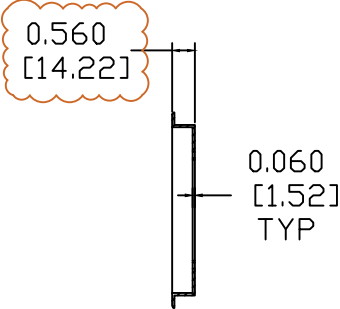
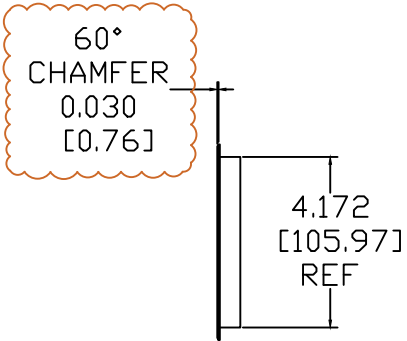
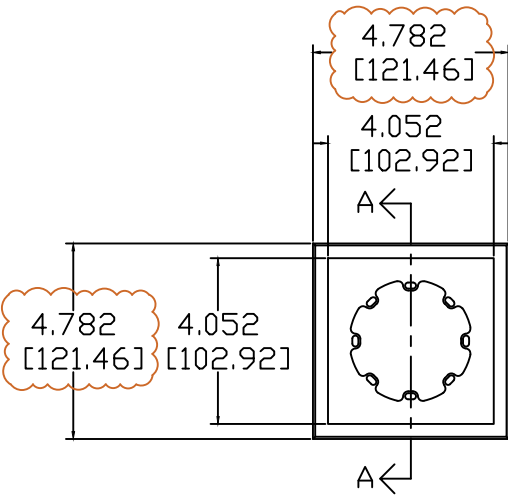
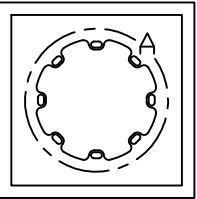
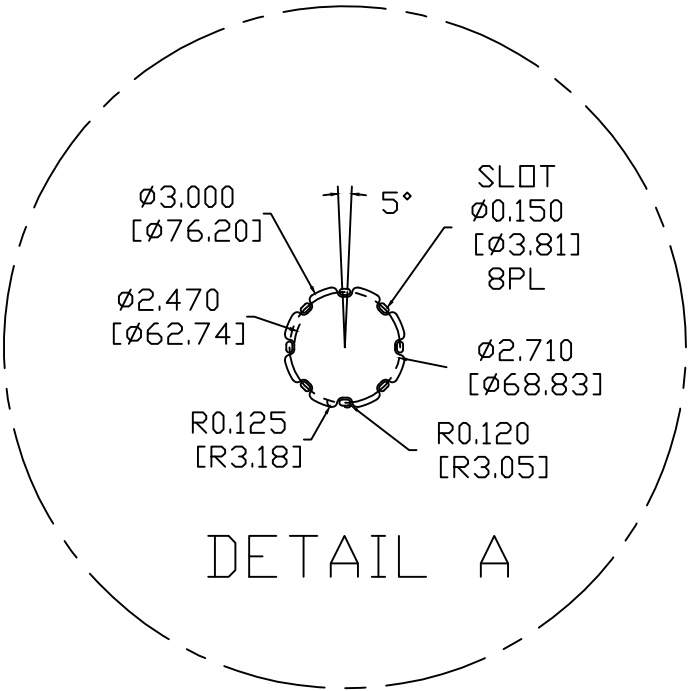


REVISIONS				
ECN	REV.	DESCRIPTION	DATE	APPROVED
20026	A	RELEASE FOR PRODUCTION	05-29-20	
20035	B	LIP RESIZED TO 4.782" X 4.782", CHAMFER ADDED HEIGHT INCREASED TO 0.560"	07-08-20	

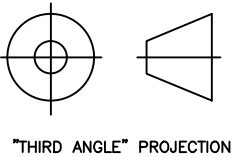


SECTION A-A



NOTES:

- 1: MATERIAL - 0.060" THICK 5052 ALUMINUM
UNLESS OTHERWISE SPECIFIED
- 2: FINISH - GLOSS WHITE
UNLESS OTHERWISE SPECIFIED
- 3: DESIGNED TO USE SOLIDEX MICRO-PERF GRILLE (200120-S2B)



"THIRD ANGLE" PROJECTION

PROPRIETARY INFORMATION THE DESIGNS, INFORMATION, AND DATA CONTAINED HEREIN ARE PROPRIETARY AND ARE SUBMITTED IN CONFIDENCE, AND SHALL NOT BE DISCLOSED, USED OR DUPLICATED IN WHOLE OR IN PART, FOR ANY PURPOSES WHATSOEVER, WITHOUT THE PRIOR WRITTEN PERMISSION OF JAMES LOUDSPEAKER LLC, 2185 PARK PL, MINDEN, NV 89423. THIS LEGEND SHALL BE MARKED ON ANY REPRODUCTIONS HEREOF IN WHOLE OR IN PART. RECEIPT OF THIS DOCUMENT SHALL BE DEEMED TO BE AN ACCEPTANCE OF THE CONDITIONS SPECIFIED HEREIN.		JAMES LOUDSPEAKER	
		63SA-7H0	
		1/2" SQUARE 4" RETRO-FIT TRIM KIT	
		P/N: SA63-4S-RF	DWR #: 200529-S201
		REVISED BY: S. LOESCH	
		DRAWN BY: S. LOESCH	FILE:
		DATE: 05-29-20	SCALE:
		APPROVED:	
		DRAFTING APPROVED:	
		DO NOT SCALE DRAWING	
		DRAWING NOT TO BE USED FOR CNC	
		TOLERANCES: ANG: ± = .5° FRACT. ± = 1/32	
		DECIMALS: .XX ± = .01 .XXX ± = .005	
		REVISION: B	SHEET 1 OF 1