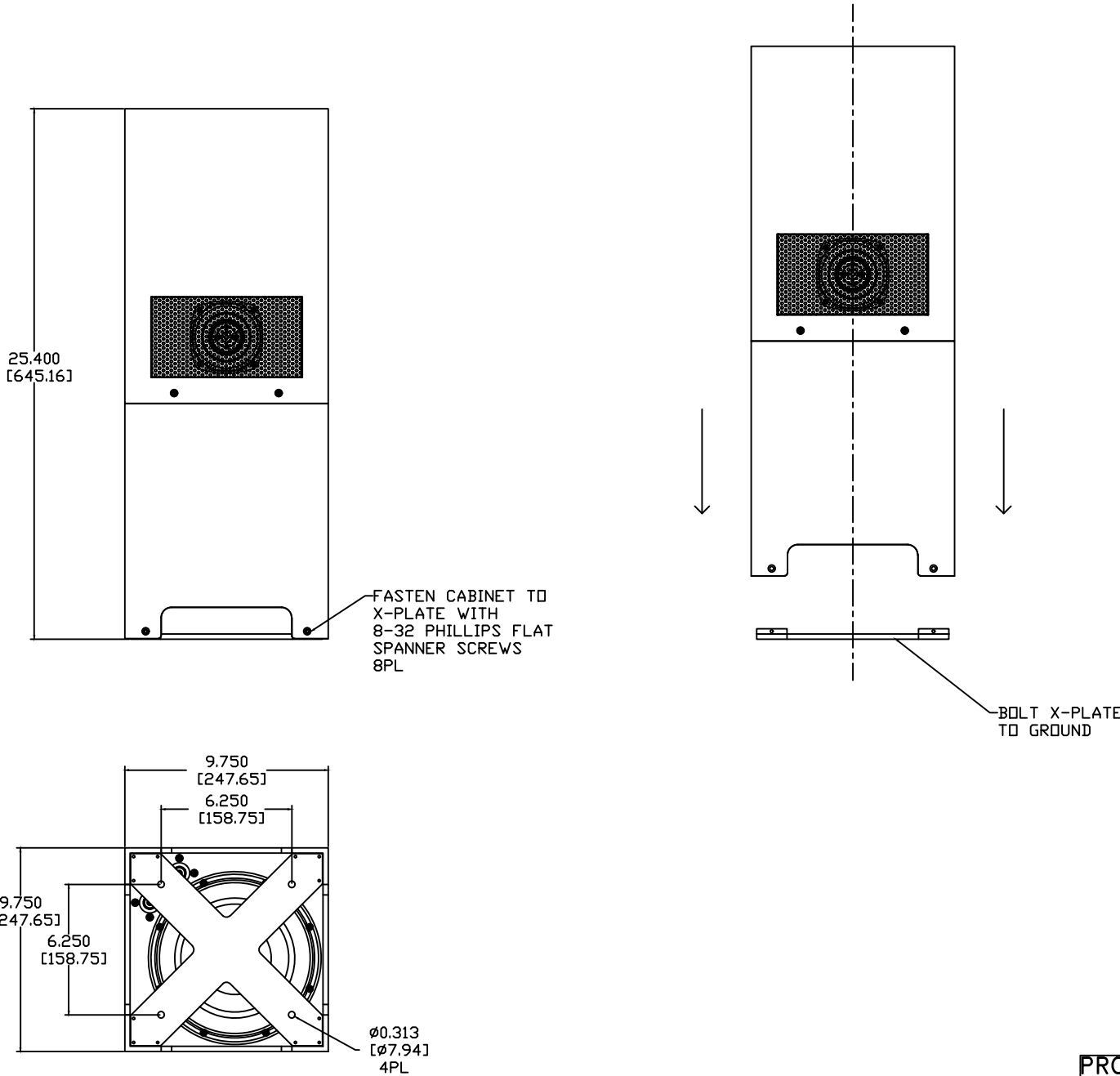
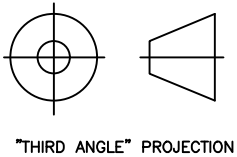


| REVISIONS | | | | |
|-----------|------|--|----------|----------|
| ECN | REV. | DESCRIPTION | DATE | APPROVED |
| | X1 | CONCEPT DRAWING | 02-27-19 | |
| | X2 | MOUNTING BLOCK THICKNESS INCREASED TO 0.3125" | 03-05-19 | |
| | A | RELEASE FOR PRODUCTION | 04-09-19 | |
| 40047 | B | MOUNTING BLOCK THICKNESS REVERTED TO 0.250" CABINET COUNTERSINK HOLE POSITION UPDATED UPDATED COMPATIBILITY TO DWR# 170728-K1C | 10-05-20 | |



NOTES:

- 1: MATERIAL – 5052 ALUMINUM
UNLESS OTHERWISE SPECIFIED
- 2: FINISH: TBD
- 3: DESIGNED TO BE USED WITH STANDARD OMNI89AT4-P CABINET (DWR# 170728-K1C)



| | | | |
|---|--|--|--------------------|
| PROPRIETARY INFORMATION THE DESIGNS, INFORMATION, AND DATA CONTAINED HEREIN ARE PROPRIETARY AND ARE SUBMITTED IN CONFIDENCE, AND SHALL NOT BE DISCLOSED, USED OR DUPLICATED IN WHOLE OR IN PART, FOR ANY PURPOSES WHATSOEVER, WITHOUT THE PRIOR WRITTEN PERMISSION OF JAMES LOUDSPEAKER LLC, 2185 PARK PL, MINDEN, NV 89423. THIS LEGEND SHALL BE MARKED ON ANY REPRODUCTIONS HEREOF IN WHOLE OR IN PART. RECEIPT OF THIS DOCUMENT SHALL BE DEEMED TO BE AN ACCEPTANCE OF THE CONDITIONS SPECIFIED HEREIN. | | <i>JAMES LOUDSPEAKER</i> | |
| | | <i>OMNI89AT4-P X-PLATE</i> | |
| | | EXTERNAL DIMENSIONS | |
| | | P/N: OMNI89-P.XPLATE | DWR #: 190227-S401 |
| | | REVISED BY: | |
| | | DRAWN BY: S. LOESCH | FILE: |
| | | DATE: 02-27-19 | SCALE: |
| | | APPROVED: | |
| | | DRAFTING APPROVED: | |
| | | DO NOT SCALE DRAWING | |
| | | DRAWING NOT TO BE USED FOR CNC | |
| | | TOLERANCES: ANG: ± = .5° FRACT. ± = 1/32 | |
| | | DECIMALS: .XX ± = .01 .XXX ± = .005 | |
| | | REVISION: B | SHEET 1 OF 4 |