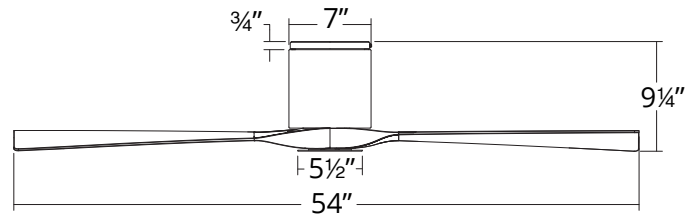


# AVIATOR FLUSH

FH-W1811-54

54" Flush Mounted Fan

# MODERN FORMS SMART FANS



## PRODUCT DESCRIPTION

Inspired by the golden age of flying, this smart fan takes technology to the next level. Pair it with the exclusive Modern Forms app to save on energy costs and intuitively create schedules that adapt to your behavior. Two simulated wood finishes contrast with the matte black or graphite housings for an understated look in interior or exterior spaces. Available optional LED luminaire kit sold separately.

## FEATURES

- 6 fan speeds through both Summer and Winter Modes
- Silent DC motor
- Optional luminaire sold separately
- Includes BT remote control
- Optional wall control for 3, 4-way control sold separately
- Compatible with Modern Forms app

## AIRFLOW/ENERGY EFFICIENCY

<b>Weighted-Average/High Airflow CFM:</b>	4258/6385
<b>Weighted-Average/High Energy Use (W):</b>	13/23
<b>Estimated Yearly Energy Cost (\$):</b>	4
<b>Weighted-Average/High Efficiency (CFM/W):</b>	320
<b>Max RPM:</b>	163

## ORDER NUMBER

Model	Housing	Blade
FH-W1811-54	<b>GH</b> Graphite	<b>WG</b> Weathered Gray
	<b>MB</b> Matte Black	
	<b>MB</b> Matte Black	<b>MB</b> Matte Black

Example: FH-W1811-54-MB

- \*Results may vary based on application and surroundings.
- \*This fan comes uni-pack - blade select options are not available



The Modern Forms app synchronizes seamlessly with smart home devices you already own



modernforms.com  
Phone (800) 526.2588  
Fax (800) 526.2585

Headquarters/Eastern Distribution Center  
44 Harbor Park Drive  
Port Washington, NY 11050

Central Distribution Center  
1600 Distribution Ct  
Lithia Springs, GA 30122

Western Distribution Center  
1750 Archibald Avenue  
Ontario, CA 91760

## SPECIFICATIONS

<b>Construction:</b>	Aluminum/ABS
<b>Blade:</b>	13° Pitch, 54" sweep
<b>Wire:</b>	8"
<b>Hanging Weight:</b>	13 lbs
<b>Total Power:</b>	27W
<b>Standards:</b>	UL/cUL Wet Location listed, Title 24 JA8-2016 Compliant, Title 20, Energy Star rated
<b>Motor Type:</b>	125 x 20 sensorless DC motor

## WIRELESS PERFORMANCE

<b>Wi-Fi Range:</b>	Up to 150 ft*
<b>Bluetooth Range:</b>	Up to 150 ft

## OPTIONAL LUMINAIRE (Sold Separately)

Model	Finish
F-1811-LED	<b>GH</b> Graphite
	<b>MB</b> Matte Black

Example: F-1811-LED-MB





# AVIATOR FLUSH

**FH-W1811-54**

54" Flush Mounted Fan

MODERN FORMS  
SMART FANS

## OPTIONAL ACCESSORIES

Bluetooth Wall Control	 <p><b>F-WCBT</b></p>	<b>WT</b> White	Control fan speed and light brightness, and switch between Summer and Winter Modes. Additional Wall Controls can be purchased separately for multiple location control.
Bluetooth Remote Control	 <p><b>F-RCBT</b></p>	<b>WT</b> White	Control fan speed and light brightness, and switch between Summer and Winter Modes. Compatible with WAC Smart Fans. Includes easy-to-install wall cradle and batteries.

Examples: Wall Control - **F-WCBT-WT**, Remote Control - **F-RCBT-WT**