



THE
SIGNATURE
LOOK

CHEF
APPAREL
BROCHURE

CHEF JACKETS

SHIRTS

PANTS

APRONS

FACE MASKS

HEADWEAR



Front and Back of House

Built tough to stand up to the demands of the commercial kitchen, **Signature Chef by Winco**® mixes all the right ingredients in chef apparel.

From chef coats, shirts, pants and headwear, to the latest styles in aprons, **Signature Chef** offers ease-of-motion and good looks.

Whether its front or back of the house, high-quality **Signature Chef** apparel is fit for any budget.



Table of Contents



- 4** CHEF JACKETS
- 10** SHIRTS
- 14** PANTS
- 17** APRONS
- 29** HEADWEAR
- 33** CARE GUIDE
- 34** SIZE GUIDE



WA-3219BK
WA-2819W
BADN-3126



CHEF JACKETS

Our jackets provide unhindered assistance to the chef's inspired creations.

Built tough to work hard with you.

*Good looking,
good cooking!*



UNIVERSAL FIT

All-day comfort



UNF-7WM
UNF-8KL
CHBC-4BK



WHITE



Fremont

UNIVERSAL JACKETS | UNF-5W (S-3XL)

- 65/35 poly-cotton blend
- Reflective white
- Double-breasted with flat buttons
- Stand-up collar
- Turn-back cuffs on long sleeves
- Chest pocket
- Thermometer pocket on sleeve
- **Display box available with full case qty only**



ITEM	DESCRIPTION	UOM	CASE	QTY/FC
UNF-5WS	Small	Each	12/24	12
UNF-5WM	Medium	Each	12/24	12
UNF-5WL	Large	Each	12/24	12
UNF-5WXL	Extra Large	Each	12/24	12
UNF-5WXXL	2-XL	Each	12/24	12
UNF-5W3XL	3-XL	Each	12/24	12

UNIVERSAL - TAPERED FIT

Cool as a cucumber



Cool mesh on back, sides and underarms

WHITE



Cool mesh on back, sides and underarms

BLACK



Fulton
UNIVERSAL JACKETS | UNF-12W (S-3XL)

- 65/35 poly-cotton blend white
- Cool mesh panels on back, sides and underarms
- Double-breasted with flat buttons
- Stand-up collar
- Long sleeves with turn-back cuffs
- Thermometer pocket on sleeve
- **Display box available with full case qty only**



ITEM	DESCRIPTION	UOM	CASE	QTY/FC
UNF-12WS	Small	Each	12/24	12
UNF-12WM	Medium	Each	12/24	12
UNF-12WL	Large	Each	12/24	12
UNF-12WXL	Extra Large	Each	12/24	12
UNF-12WXXL	2-XL	Each	12/24	12
UNF-12W3XL	3-XL	Each	12/24	12



Fulton
UNIVERSAL JACKETS | UNF-12K (S-3XL)

- 65/35 poly-cotton blend black
- Cool mesh panels on back, sides and underarms
- Double-breasted with flat buttons
- Stand-up collar
- Long sleeves with turn-back cuffs
- Thermometer pocket on sleeve
- **Display box available with full case qty only**



ITEM	DESCRIPTION	UOM	CASE	QTY/FC
UNF-12KS	Small	Each	12/24	12
UNF-12KM	Medium	Each	12/24	12
UNF-12KL	Large	Each	12/24	12
UNF-12KXL	Extra Large	Each	12/24	12
UNF-12KXXL	2-XL	Each	12/24	12
UNF-12K3XL	3-XL	Each	12/24	12

WOMEN'S -TAPERED FIT

Fit for her



WHITE



BLACK



Beacon
WOMENS JACKETS | UNF-7W (S-M-L)

- 65/35 poly-cotton blend
- Reflective white
- Double-breasted with flat buttons
- Stand-up collar
- Turn-back cuffs on long sleeves
- Thermometer pocket on sleeve
- **Display box available with full case qty only**



S M L



ITEM	DESCRIPTION	UOM	CASE	QTY/FC
UNF-7WS	Small	Each	12/24	12
UNF-7WM	Medium	Each	12/24	12
UNF-7WL	Large	Each	12/24	12



Beacon
WOMENS JACKETS | UNF-7K (S-M-L)

- 65/35 poly-cotton blend
- Sleek black
- Double-breasted with flat buttons
- Stand-up collar
- Turn-back cuffs on long sleeves
- Thermometer pocket on sleeve
- **Display box available with full case qty only**



S M L



ITEM	DESCRIPTION	UOM	CASE	QTY/FC
UNF-7KS	Small	Each	12/24	12
UNF-7KM	Medium	Each	12/24	12
UNF-7KL	Large	Each	12/24	12

MEN'S - TAPERED FIT

Lean machine



WHITE



BLACK



Mulholland
MEN'S JACKETS | UNF-6W (S-4XL)

- 65/35 poly-cotton blend
- Reflective white
- Double-breasted with flat buttons
- Stand-up collar
- Turn-back cuffs on long sleeves
- Thermometer pocket on sleeve
- Display box available with full case qty only



ITEM	DESCRIPTION	UOM	CASE	QTY/FC
UNF-6WS	Small	Each	12/24	12
UNF-6WM	Medium	Each	12/24	12
UNF-6WL	Large	Each	12/24	12
UNF-6WXL	Extra Large	Each	12/24	12
UNF-6WXXL	2-XL	Each	12/24	12
UNF-6W3XL	3-XL	Each	12/24	12
UNF-6W4XL	4-XL	Each	12/24	12



Mulholland
MEN'S JACKETS | UNF-6K (S-4XL)

- 65/35 poly-cotton blend
- Sleek black
- Double-breasted with flat buttons
- Stand-up collar
- Turn-back cuffs on long sleeves
- Thermometer pocket on sleeve
- Display box available with full case qty only



ITEM	DESCRIPTION	UOM	CASE	QTY/FC
UNF-6KS	Small	Each	12/24	12
UNF-6KM	Medium	Each	12/24	12
UNF-6KL	Large	Each	12/24	12
UNF-6KXL	Extra Large	Each	12/24	12
UNF-6KXXL	2-XL	Each	12/24	12
UNF-6K3XL	3-XL	Each	12/24	12
UNF-6K4XL	4-XL	Each	12/24	12

MEN'S - TAPERED FIT

Blazing Red-y



UNF-6RL
UNF-4KM



RED



Mulholland
MEN'S JACKETS | UNF-6R (S-2XL)

- 65/35 poly-cotton blend
- Reflective white
- Double-breasted with flat buttons
- Stand-up collar
- Turn-back cuffs on long sleeves
- Thermometer pocket on sleeve
- **Display box available with full case qty only**



ITEM	DESCRIPTION	UOM	CASE	QTY/FC
UNF-6RS	Small	Each	12/24	12
UNF-6RM	Medium	Each	12/24	12
UNF-6RL	Large	Each	12/24	12
UNF-6RXL	Extra Large	Each	12/24	12
UNF-6RXXL	2-XL	Each	12/24	12



SHIRTS

Grab a shirt and get in there.

The pointed collar shirts feature convenient quick-snaps for easy on and off in a jiffy.

The lightweight ventilated shirts keep the kitchen crew cool when the heat is on.

Kitchen comforts



UNF-9WL
UNF-3CL
CHPB-3WX



SNAP-BUTTON

Universal Fit



WHITE



BLACK



Broadway
SNAP-BUTTON SHIRTS | UNF-1W (S-4XL)

- Universal Fit
- Lightweight 65/35 poly-cotton blend
- Button-up to neck; pointed collar
- Snap button front
- Chest pocket
- **Display box available with full case qty only**



ITEM	DESCRIPTION	UOM	CASE	QTY/FC
UNF-1WS	Small	Each	24/48	24
UNF-1WM	Medium	Each	24/48	24
UNF-1WL	Large	Each	24/48	24
UNF-1WXL	Extra Large	Each	24/48	24
UNF-1WXXL	2-XL	Each	24/48	24
UNF-1W3XL	3-XL	Each	24/48	24
UNF-1W4XL	4-XL	Each	24/48	24



Broadway
SNAP-BUTTON SHIRTS | UNF-1K (S-4XL)

- Universal Fit
- Lightweight 65/35 poly-cotton blend
- Button-up to neck; pointed collar
- Snap button front
- Chest pocket
- **Display box available with full case qty only**



ITEM	DESCRIPTION	UOM	CASE	QTY/FC
UNF-1KS	Small	Each	24/48	24
UNF-1KM	Medium	Each	24/48	24
UNF-1KL	Large	Each	24/48	24
UNF-1KXL	Extra Large	Each	24/48	24
UNF-1KXXL	2-XL	Each	24/48	24
UNF-1K3XL	3-XL	Each	24/48	24
UNF-1K4XL	4-XL	Each	24/48	24

VENTILATED

White with cool mesh



FRONT



BACK



Broadway
VENTILATED SHIRTS | UNF-9W (S-3XL)

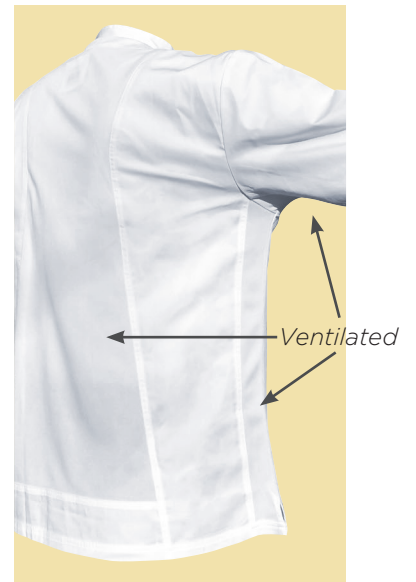
- Universal fit
- Lightweight 65/35 poly-cotton blend
- Cool mesh panels on back, sides and underarms
- Stand-up collar
- Chest pocket
- Thermometer pocket on sleeve
- **Display box available with full case qty only**



ITEM	DESCRIPTION	UOM	CASE	QTY/FC
UNF-9WS	Small	Each	18/36	18
UNF-9WM	Medium	Each	18/36	18
UNF-9WL	Large	Each	18/36	18
UNF-9WXL	Extra Large	Each	18/36	18
UNF-9WXXL	2-XL	Each	18/36	18
UNF-9W3XL	3-XL	Each	18/36	18



Cool mesh on back, sides and underarms



VENTILATED

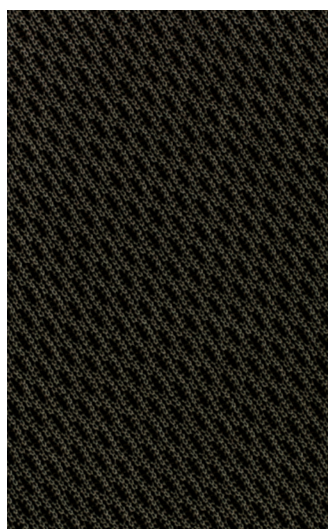
Black with cool mesh



BACK



FRONT



Cool mesh on back, sides and underarms



**Broadway
VENTILATED SHIRTS | UNF-9K (S-3XL)**

- Universal fit
- Lightweight 65/35 poly-cotton blend
- Cool mesh panels on back, sides and underarms
- Stand-up collar
- Chest pocket
- Thermometer pocket on sleeve
- **Display box available with full case qty only**



ITEM	DESCRIPTION	UOM	CASE	QTY/FC
UNF-9KS	Small	Each	18/36	18
UNF-9KM	Medium	Each	18/36	18
UNF-9KL	Large	Each	18/36	18
UNF-9KXL	Extra Large	Each	18/36	18
UNF-9KXXL	2-XL	Each	18/36	18
UNF-9K3XL	3-XL	Each	18/36	18



PANTS

Fit, function and style takes you comfortably through long shifts.

Solids and patterns to choose from.

Put on a fresh pair



Newbury

RELAXED
HOUNDSTOOTH

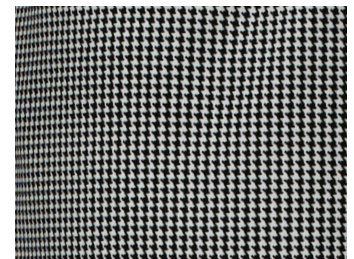


UNF-4KM

Elastic Waist with Inner Drawstring



Back Patch-Pockets



Perfect Camouflage



Newbury
HOUNDSTOOTH PANTS | UNF-4K (S-XXL)

- 65/35 poly-cotton blend
- Chalkstripe pattern
- Pull-on style with elastic waistband
- On-seam front pockets
- Two back patch-pockets
- **Display box available with full case qty only**



ITEM	DESCRIPTION	UOM	CASE	QTY/FC
UNF-4KS	Small	Each	12/24	12
UNF-4KM	Medium	Each	12/24	12
UNF-4KL	Large	Each	12/24	12
UNF-4KXL	Extra Large	Each	12/24	12
UNF-4KXXL	2-XL	Each	12/24	12

Elastic Drawstring Waist



Back Patch-Pockets



Woven pattern for lasting appearance

RELAXED
WOVEN CHALKSTRIPE



Newbury
WOVEN CHALKSTRIPE PANTS | UNF-3C (S-XXL)

- 65/35 poly-cotton blend
- Woven chalkstripe pattern for a lasting appearance
- Pull-on style with elastic drawstring waist
- On-seam front pockets
- Two back patch-pockets
- **Display box available with full case qty only**

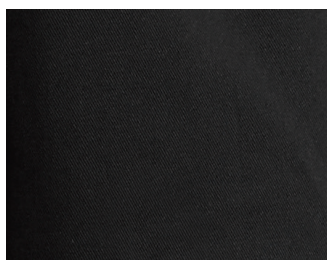


ITEM	DESCRIPTION	UOM	CASE	QTY/FC
UNF-3CS	Small	Each	12/24	12
UNF-3CM	Medium	Each	12/24	12
UNF-3CL	Large	Each	12/24	12
UNF-3CXL	Extra Large	Each	12/24	12
UNF-3CXXL	2-XL	Each	12/24	12

Elastic Waist with Inner Drawstring



Back Patch-Pockets



Solid Durability

RELAXED
BLACK



Newbury
BLACK PANTS | UNF-2K (S-XXL)

- 65/35 poly-cotton blend
- Solid Black
- Pull-on style with elastic drawstring waist
- On-seam front pockets
- Two back patch-pockets
- **Display box available with full case qty only**



ITEM	DESCRIPTION	UOM	CASE	QTY/FC
UNF-2KS	Small	Each	12/24	12
UNF-2KM	Medium	Each	12/24	12
UNF-2KL	Large	Each	12/24	12
UNF-2KXL	Extra Large	Each	12/24	12
UNF-2KXXL	2-XL	Each	12/24	12

CARGO
BLACK



Elastic Waist with Inner Drawstring



Cargo Patch-Pockets



Solid Durability



Newbury
HOUNDSTOOTH PANTS | UNF-4K (S-XXL)

- 65/35 poly-cotton blend
- Solid black, straight-leg
- Pull-on style with elastic waistband
- Cargo pockets with velcro closure
- **Display box available with full case qty only**



ITEM	DESCRIPTION	UOM	CASE	QTY/FC
UNF-11KXS	Extra Small	Each	12/24	12
UNF-11KS	Small	Each	12/24	12
UNF-11KM	Medium	Each	12/24	12
UNF-11KL	Large	Each	12/24	12
UNF-11KXL	Extra Large	Each	12/24	12
UNF-11KXXL	2-XL	Each	12/24	12

WOMEN'S
BLACK



Briley

Elastic Drawstring Waist



Top-Flap Back Pockets



Solid Choice



Briley
BLACK WOMEN'S PANTS | UNF-8K (S-M-L)

- 65/35 poly-cotton blend
- Solid black, straight-leg
- Pull-on style with elastic drawstring waist
- Front patch-pockets
- Two back patch-pockets with velcro flaps
- **Display box available with full case qty only**



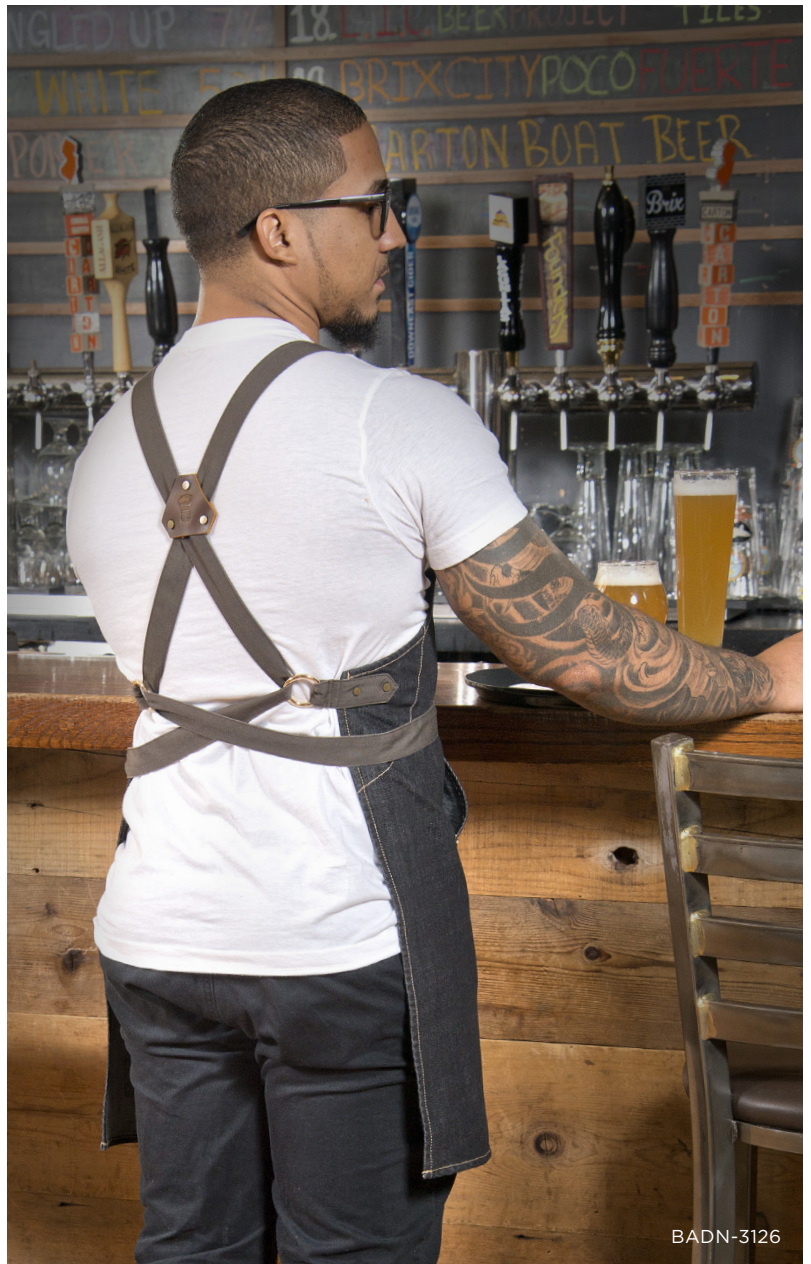
ITEM	DESCRIPTION	UOM	CASE	QTY/FC
UNF-8KS	Small	Each	12/24	12
UNF-8KM	Medium	Each	12/24	12
UNF-8KL	Large	Each	12/24	12



APRONS

Our aprons are available in multiple materials and colors, and are loaded with useful features to suit kitchen prep or front of house service.

Food service and kitchen prep never looked so good



DENIM

Adjustable Neck



Adjust for best fit



DARK WASH BLUE | GREY STRAPS



Downtown
DENIM BIB APRON | BADN-3430

- 80/20 cotton-poly blend
- Heavyweight dark wash denim
- Adjustable buckle neck strap
- Two vertical waist pockets
- Open chest pocket
- Zippered cell-phone pocket
- 34-1/2" x 30-1/4"W
- **Display box available with full case qty only**



Contrast stitching



Secure pockets



ONE SIZE

ITEM	DESCRIPTION	UOM	CASE	QTY/FC
BADN-3430	Dark Wash w/ Grey Straps	Each	12/24	12



Village

APRONS



Model: 5' 7"

DENIM

Cross-Back



Debossed leather strap divider



DARK WASH BLUE | BROWN STRAPS



Village
DENIM BIB APRON | BADN-3126

- 80/20 cotton-poly blend
- Heavyweight dark wash denim
- Cross-back straps help reduce neck strain
- Metal rings to secure ties
- Two slanted waist pockets
- Thermometer/pen pocket
- 31-3/4" L x 26-3/4" W
- **Display box available with full case qty only**



ONE SIZE

ITEM	DESCRIPTION	UOM	CASE	QTY/FC
BADN-3126	Dark Wash w/ Brown Straps	Each	12/24	12



Contrast stitching



Brass rivets





Adjustable strap
for best fit

MID-WEIGHT

Bib-Front, Full-Length



BA-3327B

Model: 5' 3"



BLUE



BLACK



BA-3327K

Model: 6'



Bourbon
MID-WEIGHT BIB APRONS | BA-3327 SERIES

- Blue: 65/35 poly-cotton blend
- Black: 80/20 poly-cotton blend
- Adjustable snap-button neck strap
- Thermometer/pen pocket
- 8 waist pockets
- 33-1/2"L x 27"W
- **Display box available with full case qty only**



ONE SIZE



ITEM	DESCRIPTION	UOM	CASE	QTY/FC
BA-3327B	Blue	Each	24/48	24
BA-3327K	Black	Each	24/48	24



Woven pattern for a lasting appearance

CHALKSTRIPE

Woven, Bib-Front, Full-Length



VERTICAL STRIPES



Main
WOVEN CHALKSTRIPE BIB APRON | BA-3427CS

- 65/35 poly-cotton blend
- Self-fabric neck strap and ties
- Two front pockets; fits digital tablets up to 8" wide
- 33-1/2"L x 27"W



ONE SIZE

ITEM	DESCRIPTION	UOM	CASE	QTY/BREAK
BA-3427CS	Bib Front, Chalkstripe	Each	12/60	12



Pockets fit most digital tablets



Model: 6'

EVERYDAY

Bib-Front, Half-Length, 3-Pockets



BLACK



WHITE



BA-2724K

Model: 5' 3"



Downing
EVERYDAY BIB APRONS | BA-2724 SERIES

- 65/35 poly-cotton blend
- Adjustable buckle neck strap
- 3 waist pockets
- 24"L x 27-1/2"W



ONE SIZE

ITEM	DESCRIPTION	UOM	CASE	QTY/BREAK
BA-2724K	Black	Each	12/60	12
BA-2724W	White	Each	12/60	12

SIMPLE

Bib-Front, Full-Length, No Pockets



Downing
SIMPLE BIB APRONS | BA-3226 SERIES

- 65/35 poly-cotton blend
- Plain, flat front
- 33”L x 26”W



ONE SIZE

ITEM	DESCRIPTION	UOM	CASE	QTY/BREAK
BA-3226BK	Black	Each	12/60	12
BA-3226WH	White	Each	12/60	12

BOLD

Bib-Front, Full-Length, Colors



BA-PBL

Model: 6"



Downing
COLOR BIB APRONS | BA-P SERIES

- 65/35 poly-cotton blend
- Thermometer/pen and pad pockets
- Assorted colors
- 33”L x 26”W



ONE SIZE

ITEM	DESCRIPTION	UOM	CASE	QTY/BREAK
BA-PBG	Burgundy	Each	12/60	12
BA-PBK	Black	Each	12/60	12
BA-PBL	Blue	Each	12/60	12
BA-PGN	Green	Each	12/60	12
BA-PLG	Bright Green	Each	12/60	12
BA-PRD	Red	Each	12/60	12
BA-PWH	White	Each	12/60	12
BA-PYL	Yellow	Each	12/60	12

SERVICE APRONS

Full and Half-Length Bistro

BISTRO FULL-LENGTH

BISTRO HALF-LENGTH

WHITE



BLACK



Lombard BISTRO APRONS | WA-3129 SERIES

- 65/35 poly-cotton blend
- 2 utility pockets fit most digital tablets
- 32" L x 28" W



ONE SIZE

ITEM	DESCRIPTION	UOM	CASE	QTY/BREAK
WA-3129BK	Black	Each	12/60	12
WA-3129WH	White	Each	12/60	12



Lombard HALF BISTRO APRONS | WA-2819 SERIES

- 65/35 poly-cotton blend
- 2 pockets fit most digital tablets
- 19" L x 28" W



ONE SIZE

ITEM	DESCRIPTION	UOM	CASE	QTY/BREAK
WA-2819K	Black	Each	12/60	12
WA-2819W	White	Each	12/60	12



Full-length bistro
Model: 6'



Half-length bistro
Model: 5'3"

SERVICE APRONS

Four-Way and 3-Pocket

FOUR-WAY



4 aprons
in one



3 POCKETS



GREEN

BURGUNDY

RED



Lombard FOUR-WAY APRONS | WA4-3417 SERIES

- 65/35 poly-cotton blend
- Four surfaces for quick-flip change to present clean side without switching aprons
- 17"L x 34"W



ONE SIZE

ITEM	DESCRIPTION	UOM	CASE	QTY/BREAK
WA4-3417K	Black	Each	12/60	12
WA4-3417W	White	Each	12/60	12



Lombard WAIST APRONS | WA-1221 SERIES

- 3 pockets
- Wrinkle-resistant cotton-poly blend
- Available in 4 colors
- 12-1/2"L x 21-3/4"W



ONE SIZE

ITEM	DESCRIPTION	UOM	CASE	QTY/BREAK
WA-1221	Black	Each	12/60	12
WA-1221G	Green	Each	12/60	12
WA-1221R	Burgundy	Each	12/60	12
WA-1221RED	Red	Each	12/60	12
WA-1221W	White	Each	12/60	12

APRON LENGTHS

Aprons range from above to below the knee length for just the right look

BISTRO
FULL-LENGTH



BISTRO
HALF-LENGTH



WAIST



GLOVES

SERVICE GLOVES

White cotton

6 pairs
per pack



WHITE COTTON GLOVES | GLC SERIES

- Elevate the dining experience
- 100% cotton
- 12 gloves per pack

MEDIUM

LARGE

ITEM	DESCRIPTION	UOM	CASE	QTY/BREAK
GLC-M	Medium (6 pairs)	Doz	100	10
GLC-L	Large (6 pairs)	Doz	100	10



PATTERN GRAY BLACK WHITE

FACE MASKS

REUSABLE FACE MASKS

2-Ply Fabric



ADJUSTABLE FACE MASKS | MSK-3 & -4 SERIES

- Outer: 100% Polyester, Lining: 60/40 Cotton/Poly
- Machine washable
- Non-medical grade
- Comfort fit with contoured nose
- Adjustable soft elastic ear loops for lasting comfort



ITEM	COLOR	SIZE	UOM	CASE
MSK-3ML	Camo	M/L	2 Pcs/Pk	50/250
MSK-3LXL	Camo	L/XL	2 Pcs/Pk	50/250
MSK-4GML	Gray	M/L	2 Pcs/Pk	50/250
MSK-4GLXL	Gray	L/XL	2 Pcs/Pk	50/250



ADJUSTABLE FACE MASKS | MSK-2 SERIES

- 100% Cotton
- Machine washable
- Non-medical grade
- Comfort fit with contoured nose
- Adjustable soft elastic ear loops for lasting comfort



ITEM	COLOR	SIZE	UOM	CASE
MSK-2WML	White	M/L	2 Pcs/Pk	50/250
MSK-2WLXL	White	L/XL	2 Pcs/Pk	50/250
MSK-2KML	Black	M/L	2 Pcs/Pk	50/250
MSK-2KLXL	Black	L/XL	2 Pcs/Pk	50/250



FACE MASKS | MSK-1 SERIES

- 100% Cotton
- Machine washable
- Non-medical grade
- Comfort fit with contoured nose
- Soft elastic ear loops for lasting comfort



ITEM	COLOR	SIZE	UOM	CASE
MSK-1WML	White	M/L	2 Pcs/Pk	50/250
MSK-1WLXL	White	L/XL	2 Pcs/Pk	50/250
MSK-1KML	Black	M/L	2 Pcs/Pk	50/250
MSK-1KLXL	Black	L/XL	2 Pcs/Pk	50/250



Wash before wearing. Face coverings are not intended for medical use, and not proven to reduce the transmission of disease. Masks are intended for ADULT USE ONLY. They should not be placed on children under age 2, used by anyone with skin sensitivities, who has trouble breathing, or who is unconscious, incapacitated, or otherwise unable to remove the mask without assistance.

DISHWASHING

Water resistant



Front texture

BROWN

DISHWASHING APRON | BAW-2740BN

- Heavyweight vinyl with faux leather front
- 40"L x 25-1/2"W



ONE SIZE

ITEM	DESCRIPTION	UOM	CASE	QTY/BREAK
BAW-2740BN	Brown	Each	12/60	12



Front texture



BLACK

DISHWASHING APRON | BAW-2540BK

- Lightweight nylon/PVC/poly blend
- 40"L x 27-1/2"W



ONE SIZE

ITEM	DESCRIPTION	UOM	CASE	QTY/BREAK
BAW-2540BK	Black	Each	12/60	12

HEAVY VINYL

Water repellent

BLACK VINYL APRONS | BA SERIES

ONE SIZE

ITEM	DESCRIPTION	UOM	CASE	QTY/BREAK
BA-HN	Heavy Vinyl w/ Pocket 41-1/4"L x 26-1/2"W	Each	12/24	12
BA-LA	Latex 44-1/2"L x 37"W	Each	12	12



BA-HN



BA-LA



**100
pieces per
dispenser
box**

DISPOSABLE

Waterproof

WHITE PLASTIC APRON | BADP-2846



ONE SIZE

ITEM	DESCRIPTION	UOM	CASE	QTY/BREAK
BADP-2846	1 mil, 28" x 46"	Box	1/12	1



HATS

Top it off with headwear and complete the kitchen workwear look.

Keep a cool head



BASEBALL HAT

Sturdy Visor



Adjust to fit



BASEBALL HAT | CHBC-4BK

- 65/35 poly-cotton blend
- Adjustable metal buckle for best fit
- Eyelet ventilation at top
- Built-in sweatband helps wick away moisture
- **Display box available with full case qty only**



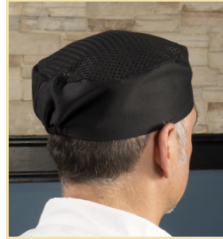
ONE SIZE



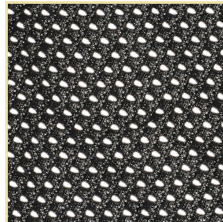
ITEM	DESCRIPTION	UOM	CASE	QTY/FC
CHBC-4BK	Black	Each	36/72	36

PILLBOX HATS

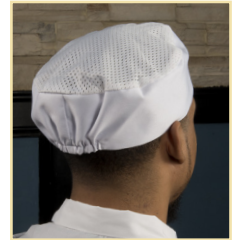
Ventilated



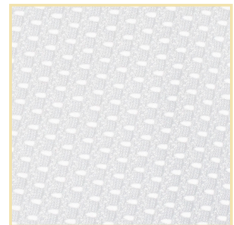
Elastic back



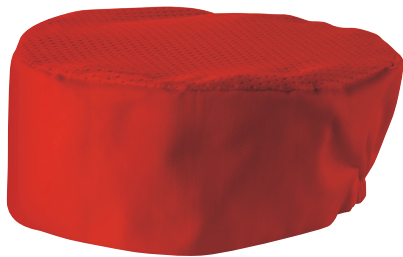
Cool mesh top



Elastic back



Cool mesh top



Cool mesh top



Elastic back



PILLBOX HATS | CHPB-3 SERIES (R, XL)

- Lightweight 65/35 poly-cotton blend
- Cool mesh top panel
- Elastic back for snug fit
- **Display box available with full case qty only**



REGULAR

XL

ITEM	DESCRIPTION	UOM	CASE	QTY/BOX
CHPB-3BR	Black, Regular	Each	48/96	48
CHPB-3BX	Black, XL	Each	48/96	48
CHPB-3RR	Red, Regular	Each	48/96	48
CHPB-3RX	Red, XL	Each	48/96	48
CHPB-3WR	White, Regular	Each	48/96	48
CHPB-3WX	White, XL	Each	48/96	48



HEADWRAP

Lightweight



Adjust to fit



HEAD WRAP | CHHW-3K

- Lightweight 65/35 poly-cotton blend
- Breathable comfort
- Ties at back adjust for best fit
- **Display box available with full case qty only**



ONE SIZE

ITEM	DESCRIPTION	UOM	CASE	QTY/BOX
CHHW-3K	Black	Each	48/96	48



FABRIC CHEF HATS

Velcro Closure



Assorted colors



Adjustable



FABRIC CHEF HATS | CH-13 SERIES

- 65/35 poly-cotton blend
- Adjustable velcro closure; 21" to 24"
- Wide head band, 13" high overall
- Assorted colors available



ONE SIZE

ITEM	DESCRIPTION	UOM	CASE	QTY/BREAK
CH-13BG	Burgundy	Each	24/96	24
CH-13BK	Black	Each	24/96	24
CH-13BL	Blue	Each	24/96	24
CH-13GN	Green	Each	24/96	24
CH-13LG	Bright Green	Each	24/96	24
CH-13RD	Red	Each	24/96	24
CH-13WH	White	Each	24/96	24
CH-13YL	Yellow	Each	24/96	24

PAPER CHEF HATS

Disposable



DCH-3



DCH-9



DCH-12

DISPOSABLE CHEF HATS | DCH SERIES

- White paper
- Three height options
- Wide head band

ONE SIZE

ITEM	DESCRIPTION	UOM	CASE	QTY/BREAK
DCH-3	3"H (100-Pcs/Box)	Box	1/10	10
DCH-9	9"H (10-Pcs/Bag)	Bag	1/20	10
DCH-12	12"H (10 Pcs/Bag)	Bag	1/20	10



BA-3427CS
BADN-3126

Check the care label on each item
for exact care instructions

winco
SIGNATURE CHEF
CARE GUIDE

Washing



Hand wash
cold with
like colors

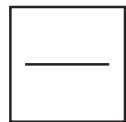


Do not
bleach

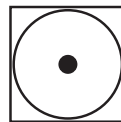


Non-chlorine
bleach, only
when necessary

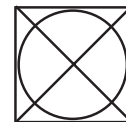
Drying



Dry flat

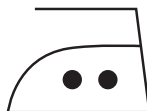


Tumble dry
low

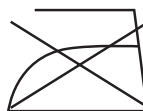


Do not
tumble dry

Ironing



Warm iron
as needed



Do not iron

Measurements are in inches

CHEF JACKETS

UNIVERSAL FIT	UNF-5W(Series)	S	M	L	XL	XXL	3XL
	Neck	16	17.5	19	20.5	22	53.5
	Chest	37-39	40-42	43-45	46-49	50-53	54-57
	Sleeve	37	34.75	35.5	36.5	37.5	38.5
	Hip	39-41	42-44	45-47	48-51	52-55	56-59

MEN'S TAPERED FIT	UNF-6 & 12 (Series)	S	M	L	XL	XXL	3XL	4XL
	Neck	16	16.75	17.5	18.25	19	19.75	20.5
	Chest	37-39	40-42	43-45	46-48	49-51	52-54	55-57
	Sleeve	33	34	35	36	37	38	39
	Hip	39-41	42-44	45-47	48-50	51-53	54-56	57-59

WOMEN'S TAPERED FIT	UNF-7(Series)	S	M	L
	Neck	13-14	14-15	15-16
	Chest	30.5-34	34.5-38	38.5-42
	Sleeve	31	32	33
	Waist	24.5-28	28.5-32	32.5-36
Hip	37.5	41	44.5	

SHIRTS

TAPERED FIT VENTILATED	UNF-9(Series)	S	M	L	XL	XXL	3XL
	Neck	16	17.25	18.5	19.75	21	22
	Chest	36.5-39	40-42.5	43.5-46	47-49.5	50.5-53	53.5-56
	Sleeve	22	23	24	25	26	27
	Hip	37.5-40	41-43.5	44.5-47	48-50.5	51.5-54	54.5-57

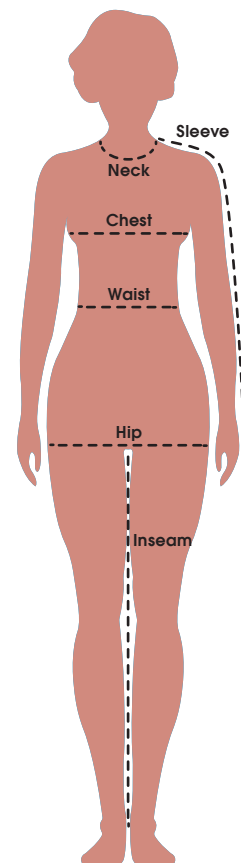
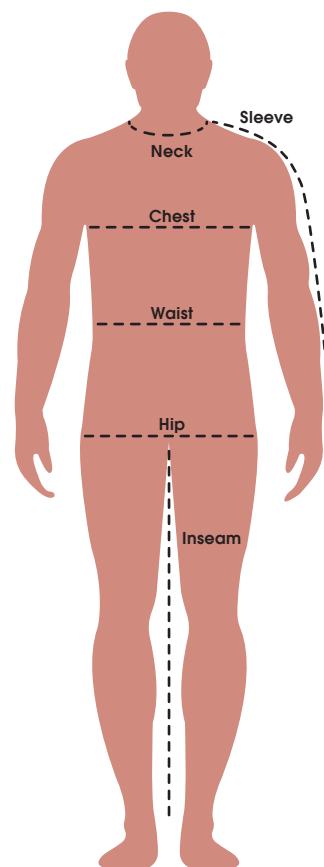
SNAP-BUTTON	UNF-1(Series)	S	M	L	XL	XXL	3XL	4XL
	Neck	16	16.75	17.5	18.25	19	19.75	20.5
	Chest	36.5-39	40-42.5	43.5-46	47-49.5	50.5-53	54-56.5	57.5-60
	Sleeve	18	19.25	20.5	21.75	23	24.25	25.5
	Hip	37.5-40	41-43.5	44.5-47	48-50.5	51.5-54	55-57.5	58.5-61

PANTS

WOMEN'S	UNF-8K (Series)	S	M	L
	Waist	29-31	31-33	33-35
	Hip	39-40	41-42	43-44
	Inseam	31	31	32

HOUNDSTOOTH	UNF-4K (Series)	S	M	L	XL	XXL
	Waist	27-30.5	31-34.5	35-38.5	39-42.5	43-46.5
	Hip	34-37	38-41	42-45	46-49	50-53
	Inseam	30	31	32	33	34

BLACK & CHALKSTRIPE	UNF-2K, 3C, 11K (Series)	XS	S	M	L	XL	XXL
	Waist	24-28.5	29-32	32.5-35.5	36-39	39.5-42.5	43-46
	Hip	33-35.5	36-38	38.5-40.5	41-43	43.5-45.5	46-48
	Inseam	27	29	30	31	32	33



SHOWROOM DISPLAY*

Wide Banner for Optimal Visibility

Holds 24 Full Cases, 3 shelves 8 cases per shelf

Each item individually packaged in clear-view resealable bag

Resealable Zipper Closure



Size Indicator

Color Box is available with each FC/full case purchase per item.

Available with select items as noted.



*Available with qualifying order, 1 per location



Fit for any budget.



Foodservice Supplies

Division of The Foodware Group™

**NEW JERSEY
HEADQUARTERS**

65 Industrial Road,
Lodi, NJ 07644

**FLORIDA SHOWROOM &
DISTRIBUTION CENTER**

10800 NW 103rd Street,
Bldg 22, Ste 11, Miami, FL 33178

**NEVADA
DISTRIBUTION CENTER**

3777 Marion Drive,
Las Vegas, NV 89115

Phone: 1-888-946-2682

Fax: 1-973-916-9959

Email: cs@wincous.com

Web: www.wincous.com



www.thefoodwaregroup.com

WINCO-CHEF

CHEF APPAREL BROCHURE



8 88800 00036 5

07/2023

©Winco®, All Rights Reserved

Check your Order Status
online at www.wincous.com