

SUPPLY

DRAINAGE

SUPPORT

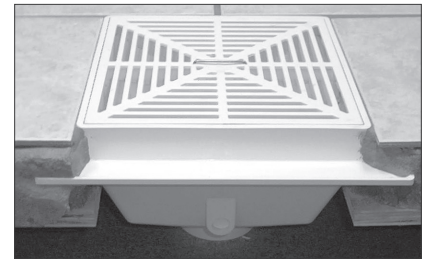
APPENDIX



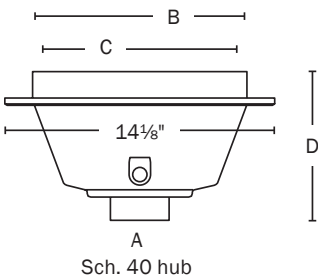
## Square Max™

### PVC Square Floor Sink

- Sump area is 54% larger than most PVC square floor sinks
- Low profile design with anchor flange for a clean appearance and a solid installation. Clamping collar available
- All inner surfaces are pitched, no standing water in sump area
- Independent lab tests show no distortion from water temperatures up to 180°F
- Tough, impact resistant PVC construction
- PVC and nickel bronze strainers for pedestrian traffic. Ductile iron strainer for heavy-duty applications



Anchor flange provides solid installations. Thinner rim profile than other square floor sinks.



Item No	Dimensions				Pkg	Min Qty	Case Qty
	A	B	C	D			
NO STRAINER - SINK ONLY							
861-2PX	2"	11 <sup>3</sup> / <sub>16</sub> "	10 <sup>11</sup> / <sub>16</sub> "	7 <sup>7</sup> / <sub>16</sub> "	B*	1	3
861-3PX	3 × 4"	11 <sup>3</sup> / <sub>16</sub> "	10 <sup>11</sup> / <sub>16</sub> "	8 <sup>5</sup> / <sub>16</sub> "	B*	1	3
861-4PX	4"	11 <sup>3</sup> / <sub>16</sub> "	10 <sup>11</sup> / <sub>16</sub> "	7 <sup>7</sup> / <sub>16</sub> "	B*	1	3
861-6PX	6"	11 <sup>3</sup> / <sub>16</sub> "	10 <sup>11</sup> / <sub>16</sub> "	9 <sup>1</sup> / <sub>2</sub> "	B*	1	3
WITH PVC STRAINER							
861-2P	2"	11 <sup>3</sup> / <sub>16</sub> "	10 <sup>11</sup> / <sub>16</sub> "	7 <sup>7</sup> / <sub>16</sub> "	B*	1	1
861-3P	3 × 4"	11 <sup>3</sup> / <sub>16</sub> "	10 <sup>11</sup> / <sub>16</sub> "	8 <sup>5</sup> / <sub>16</sub> "	B*	1	1
861-4P	4"	11 <sup>3</sup> / <sub>16</sub> "	10 <sup>11</sup> / <sub>16</sub> "	7 <sup>7</sup> / <sub>16</sub> "	B*	1	1
861-6P	6"	11 <sup>3</sup> / <sub>16</sub> "	10 <sup>11</sup> / <sub>16</sub> "	9 <sup>1</sup> / <sub>2</sub> "	B*	1	1
WITH NICKEL BRONZE RING & STRAINER							
861-2PN	2"	11 <sup>3</sup> / <sub>4</sub> "	10 <sup>3</sup> / <sub>4</sub> "	7 <sup>3</sup> / <sub>8</sub> "	B*	1	1
861-3PN	3 × 4"	11 <sup>3</sup> / <sub>4</sub> "	10 <sup>3</sup> / <sub>4</sub> "	8 <sup>3</sup> / <sub>4</sub> "	B*	1	1
861-4PN	4"	11 <sup>3</sup> / <sub>4</sub> "	10 <sup>3</sup> / <sub>4</sub> "	8 <sup>3</sup> / <sub>8</sub> "	B*	1	1
861-6PN	6"	11 <sup>3</sup> / <sub>4</sub> "	10 <sup>3</sup> / <sub>4</sub> "	9 <sup>15</sup> / <sub>16</sub> "	B*	1	1
WITH DUCTILE IRON RING & STRAINER							
861-2Pi	2"	11 <sup>3</sup> / <sub>4</sub> "	10 <sup>5</sup> / <sub>8</sub> "	8"	B*	1	1
861-3Pi	3 × 4"	11 <sup>3</sup> / <sub>4</sub> "	10 <sup>5</sup> / <sub>8</sub> "	8 <sup>3</sup> / <sub>8</sub> "	B*	1	1
861-4Pi	4"	11 <sup>3</sup> / <sub>4</sub> "	10 <sup>5</sup> / <sub>8</sub> "	9"	B*	1	1
861-6Pi	6"	11 <sup>3</sup> / <sub>4</sub> "	10 <sup>5</sup> / <sub>8</sub> "	10 <sup>1</sup> / <sub>16</sub> "	B*	1	1