

ASSEMBLING INSTRUCTIONS

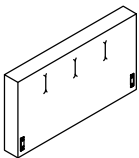
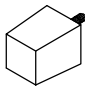
ITEM NO: 1631F-1 FULL UPH HEADBOARD

1631-1 QUEEN UPH HEADBOARD

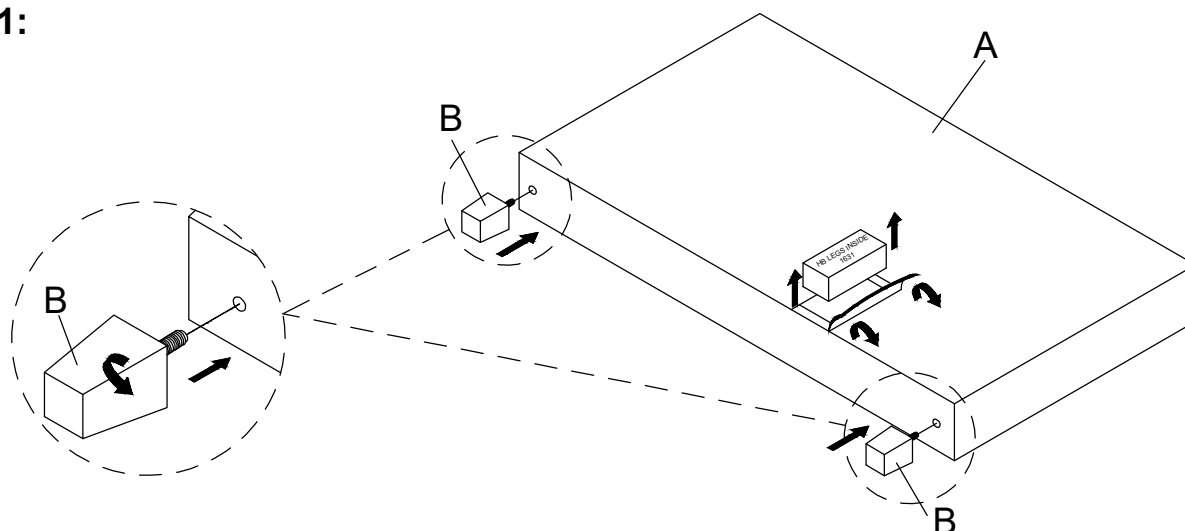
1631K-1 CAL KING / E KING UPH HEADBOARD

! It is recommended to install protective pads under all legs and supports to avoid damage or scratches when placing furniture on a wood floor or other hard surface, and to limit indentation and prevent discoloration if placing on carpet.

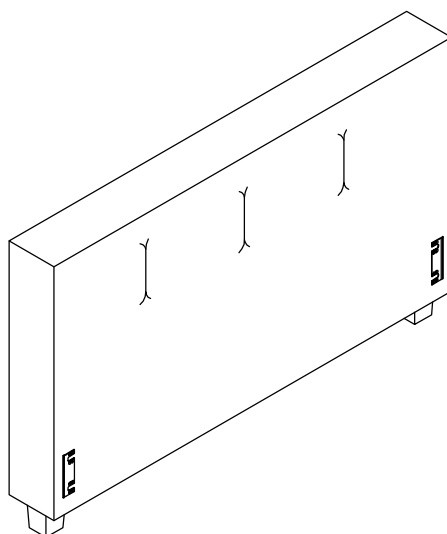
PARTS LIST

NO.	DRAWING	QTY	DESCRIPTION
A		1 PC	HEADBOARD
B		2 PCS	LEGS

STEP 1:



STEP 2: COMPLETED



CARE INTRUCTION FOR FABRIC FURNITURE

In order to maintain the original appearance of your funiture, please follow below care procedures.

°Avoid exposing furniture directly to sunlight or heating and air conditioning outlets. Sunlight and / or exposure to headting and air conditioning outlets will fade/damage fabric. Do not place your upholstered furniture too close to windows, radiators, r vents and be sure to use window treatments to block the sun's rays.

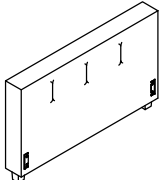
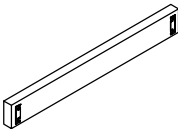
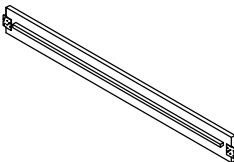
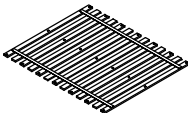
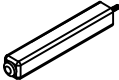
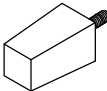

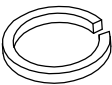
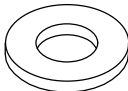
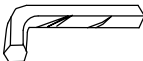
°Wipe with a soft brush to remove dust.

ASSEMBLING INSTRUCTIONS

ITEM NO: 1631F-1 FULL UPH HEADBOARD
 1631F-3 FULL UPH FOOTBOARD/RAILS
 1631-1 QUEEN UPH HEADBOARD
 1631-3 QUEEN UPH FOOTBOARD/RAILS
 1631K-1 CAL KING / E KING UPH HEADBOARD
 1631K-3EK E KING UPH FOOTBOARD/RAILS

! It is recommended to install protective pads under all legs and supports to avoid damage or scratches when placing furniture on a wood floor or other hard surface, and to limit indentation and prevent discoloration if placing on carpet.

PARTS LIST

NO.	DRAWING	QTY	DESCRIPTION
A		1 PC	HEADBOARD
B		1 PC	FOOTBOARD
C		2 PCS	SIDE RAIL
D		1 SET	SLAT ROLL (13 PCS)
E		7 PCS	SLAT SUPPORT LEG
F		2 PCS	LEGS
1		14 PCS	BOLT Ø1/4"-20 x 1-1/2"L
2		14 PCS	SPRING WASHER Ø1/4 " x 1/2" x 2mmT
3		14 PCS	FLAT WASHER Ø1/4" x 3/4" x 2mmT
4		1 PC	ALLEN KEY 1/6" x 2-3/8"L

ASSEMBLING INSTRUCTIONS

ITEM NO: 1631F-1 FULL UPH HEADBOARD

1631F-3 FULL UPH FOOTBOARD/RAILS

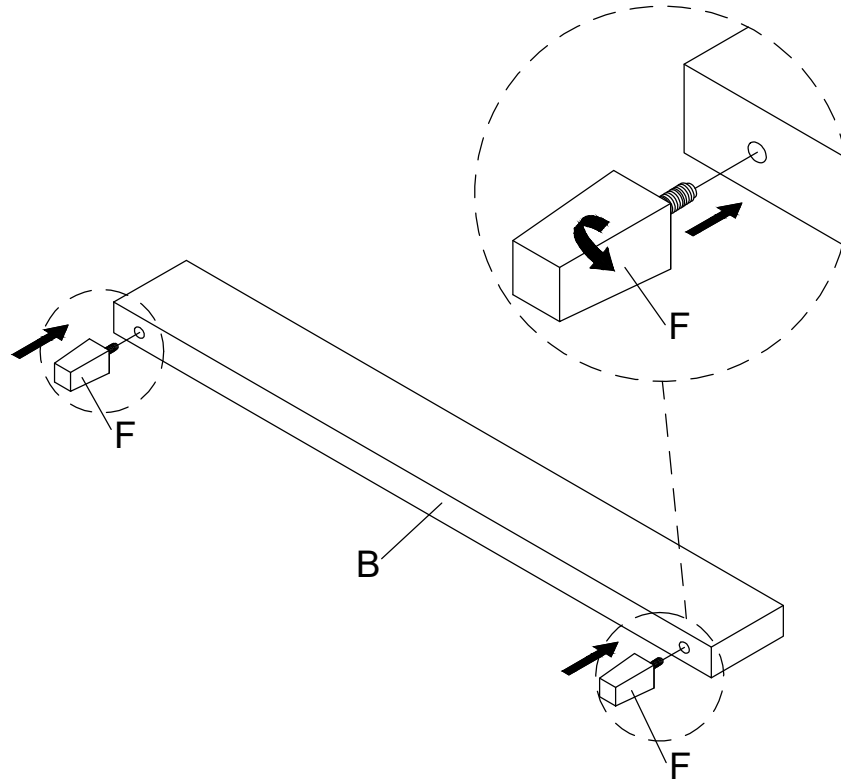
1631-1 QUEEN UPH HEADBOARD

1631-3 QUEEN UPH FOOTBOARD/RAILS

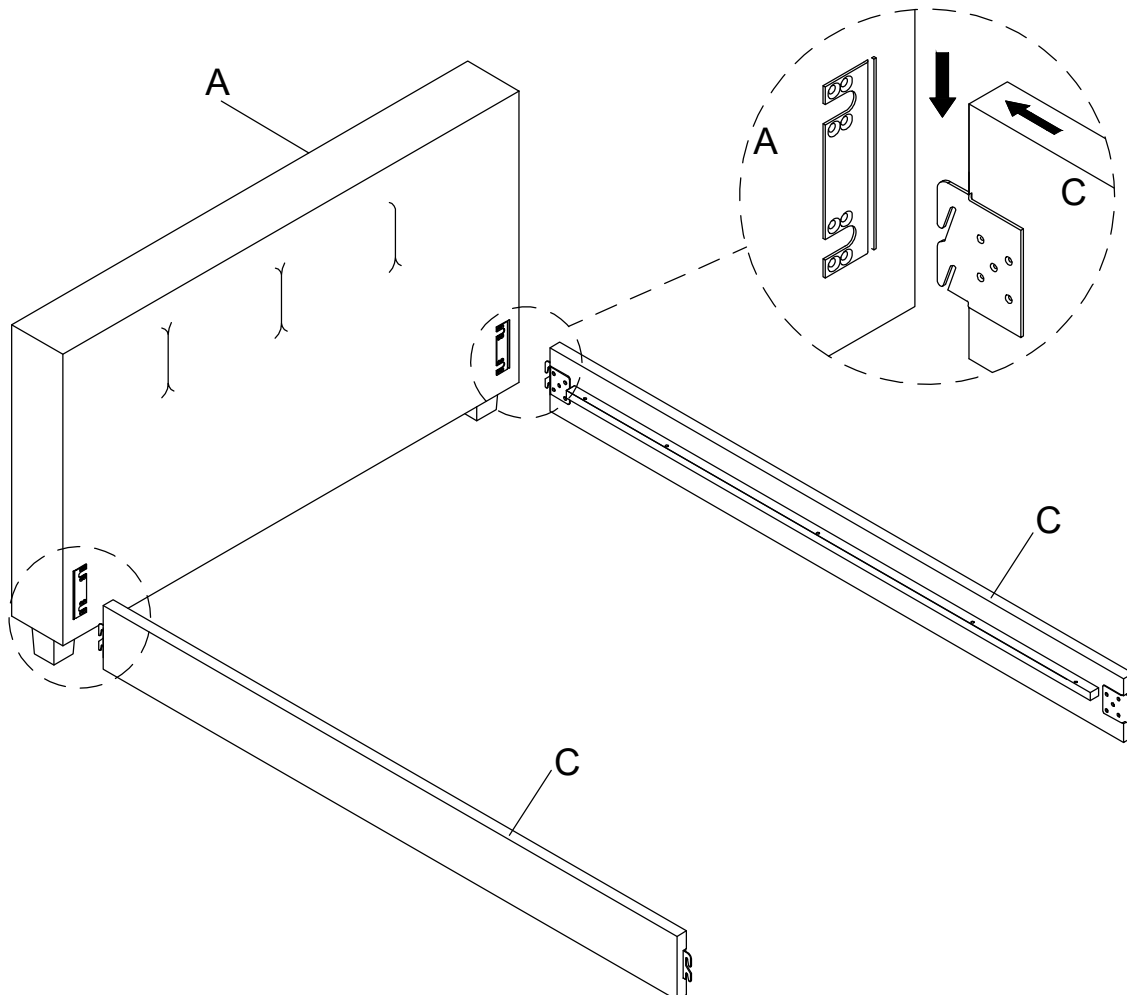
1631K-1 CAL KING / E KING UPH HEADBOARD

1631K-3EK E KING UPH FOOTBOARD/RAILS

STEP 1:



STEP 2:



ASSEMBLING INSTRUCTIONS

ITEM NO: 1631F-1 FULL UPH HEADBOARD

1631F-3 FULL UPH FOOTBOARD/RAILS

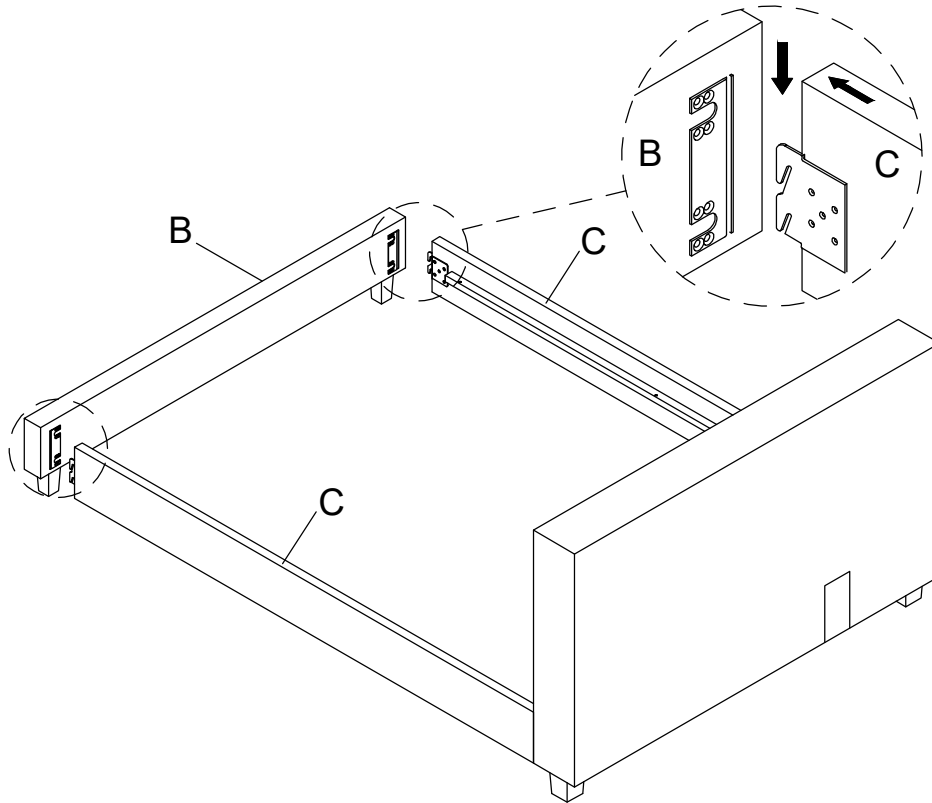
1631-1 QUEEN UPH HEADBOARD

1631-3 QUEEN UPH FOOTBOARD/RAILS

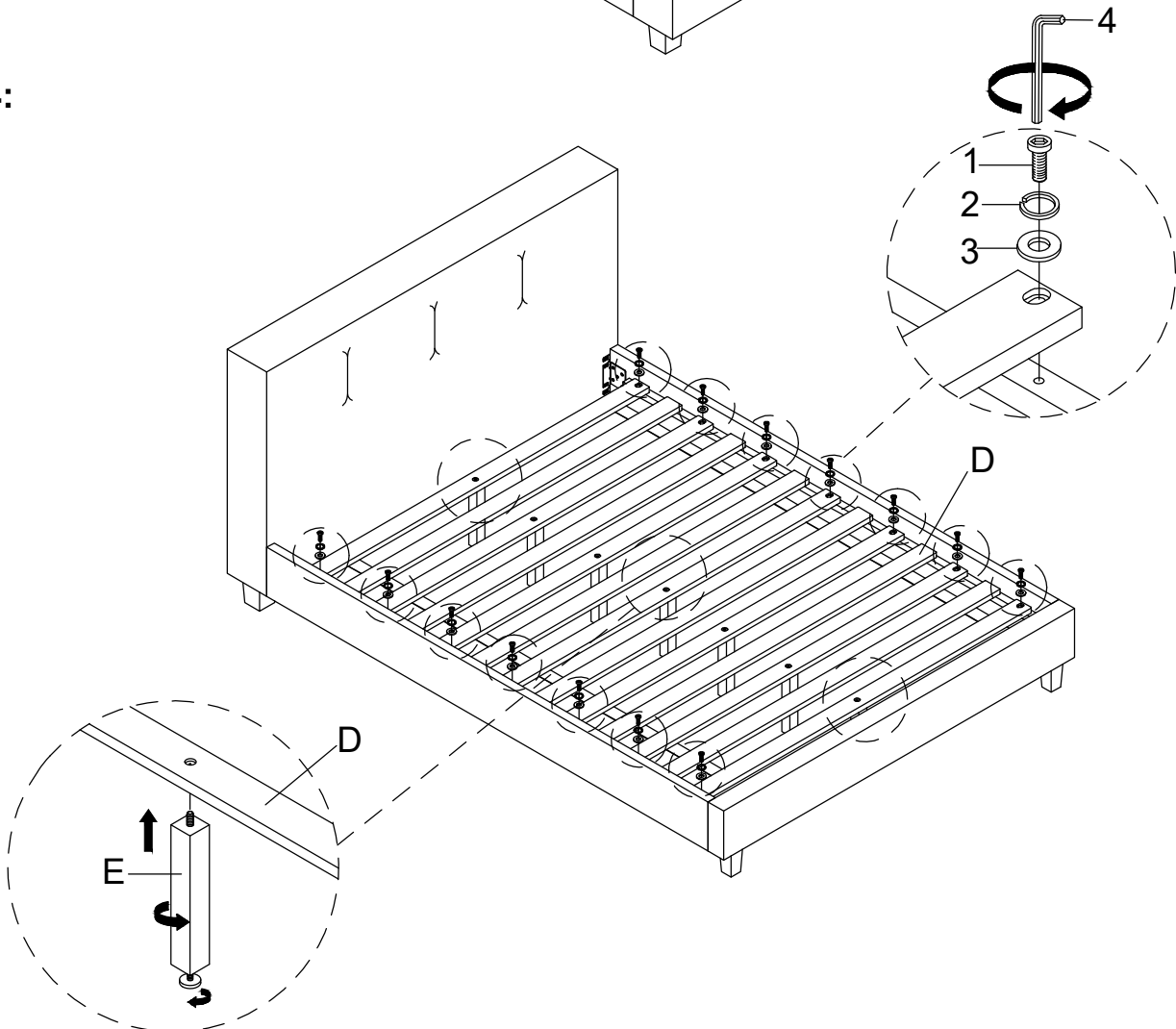
1631K-1 CAL KING / E KING UPH HEADBOARD

1631K-3EK E KING UPH FOOTBOARD/RAILS

STEP 3:



STEP 4:



ASSEMBLING INSTRUCTIONS

ITEM NO: 1631F-1 FULL UPH HEADBOARD

1631F-3 FULL UPH FOOTBOARD/RAILS

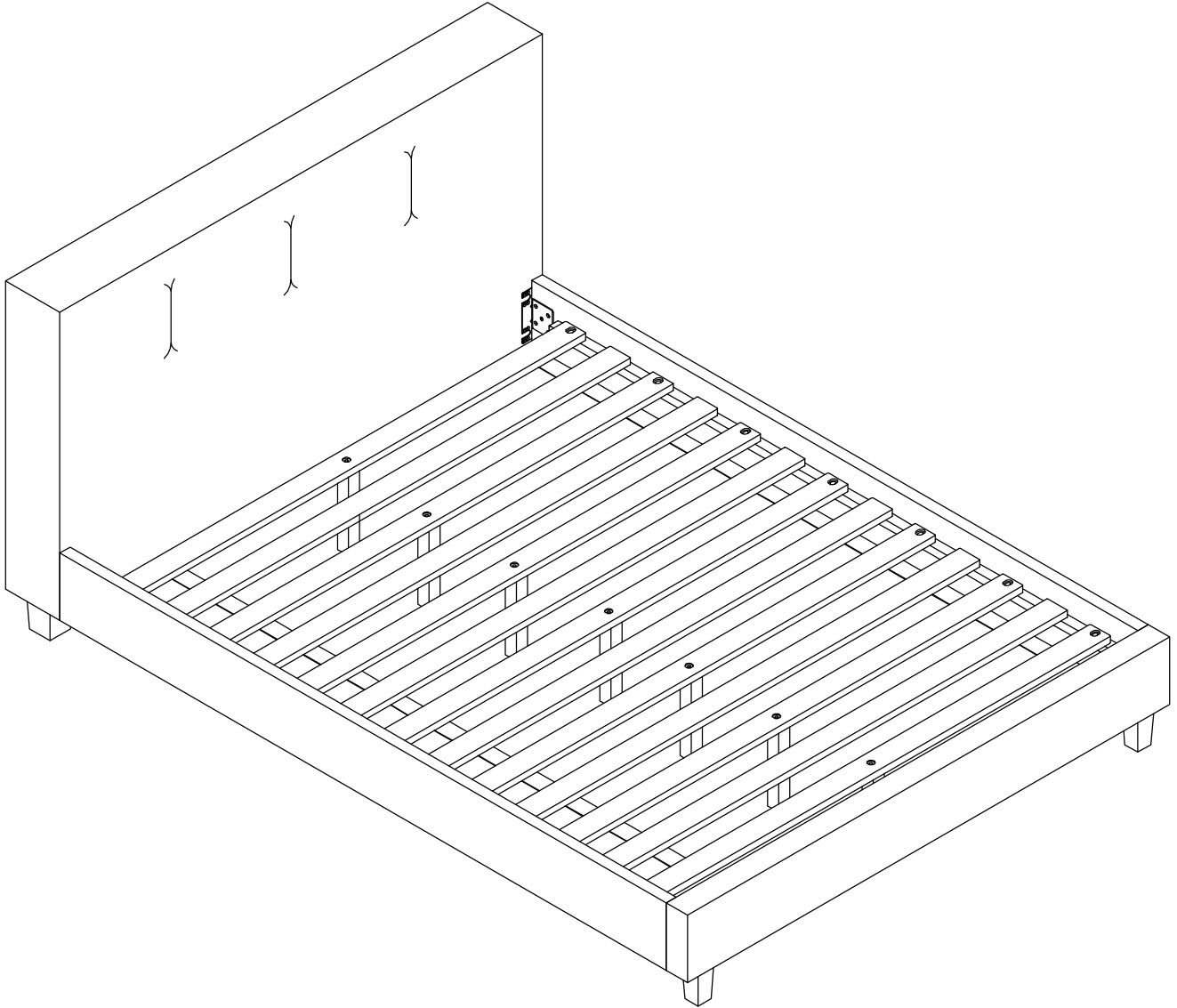
1631-1 QUEEN UPH HEADBOARD

1631-3 QUEEN UPH FOOTBOARD/RAILS

1631K-1 CAL KING / E KING UPH HEADBOARD

1631K-3EK E KING UPH FOOTBOARD/RAILS

STEP 5: COMPLETED



CARE INTRUCTION FOR FABRIC FURNITURE

In order to maintain the original appearance of your funiture, please follow below care procedures.

°Avoid exposing furniture directly to sunlight or heating and air conditioning outlets. Sunlight and / or exposure to headting and air conditioning outlets will fade/damage fabric. Do not place your upholstered furniture too close to windows, radiators, r vents and be sure to use window treatments to block the sun's rays.

°Wipe with a soft brush to remove dust.