

**FLUORESCENT FLUSH MOUNT FIXTURE
ASSEMBLY & INSTALLATION INSTRUCTIONS
MODEL#50120**

INSTALLATION IS NOW COMPLETED

Please read carefully and save these instructions,as you may need them at a later date.

CAUTION

Turn off the main power at the circuit breaker before installing the fixture, in order to prevent possible shock.

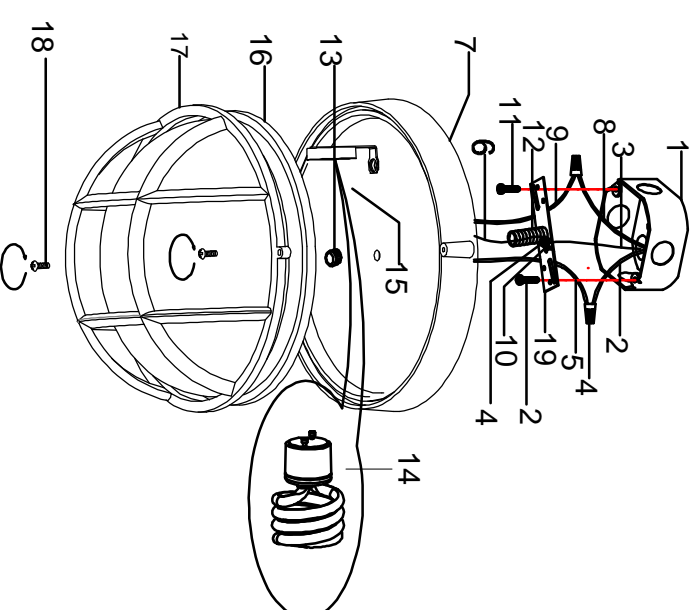
GENERAL

All electrical connections must be in accordance with local and national electrical code (N.E.C) standards. If you are unfamiliar with proper electrical wiring connections obtain the services of a qualified electrician.

Remove the fixture and the mounting package from the box and make sure that no parts are missing by referencing the illustrations on the installation instruction.

ASSEMBLY AND INSTRUCTION

1. Tighten the Cross Bar (19) to the Outlet Box (1) using the 2 Mounting Screws (11) provided. Pull the existing electrical Wires (2&8) and House Ground Wire (3) out of the Outlet Box (1).
2. Make the wiring connections:connect the White Supply Wire (2) to the white Fixture Wire (5),connect the Black Supply Wire (8) to the Black Fixture Wire (9) using Wire Connectors (4),using the Ground Screw (10) fasten the House Ground Wire (3) and the Fixture Ground Wire (6). Carefully tuck all wires back into the Outlet Box (1).
3. Put the Fixture Pan (7) through the Nipple (12) on the Cross Bar (19) and secure it using the Knob (13).
4. Install the Bulb (14) into the Lamp Socket (15).Put the Glass Shade (16) & the Fixture Frame (17) , secure it using the Fixture Screws (18).



- | | |
|------------------------|-------------------------|
| 1. OUTLET BOX | 11. MOUNTING SCREW |
| 2. WHITE SUPPLY WIRE | 12. NIPPLE |
| 3. HOUSE GROUND WIRE | 13. KNOB |
| 4. WIRE CONNECTOR | 14. BULB (NOT INCLUDED) |
| 5. WHITE FIXTURE WIRE | 15. LAMP SOCKET |
| 6. FIXTURE GROUND WIRE | 16. GLASS SHADE |
| 7. FIXTURE PAN | 17. FIXTURE FRAME |
| 8. BLACK SUPPLY WIRE | 18. FIXTURE SCREW |
| 9. BLACK FIXTURE WIRE | 19. CROSS BAR |
| 10. GROUND SCREW | |