

How to use a Tassel Cap

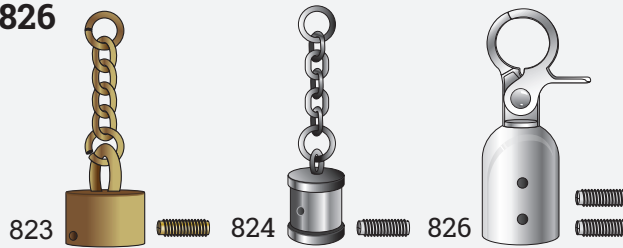
What is a Tassel Cap?

It is a metal cap designed to top a tassel. The tassel can be made of many materials, including leather, suede, pre-cut fringe, beaded fringe, feathered fringe and yarns. Separate beads, charms and feathers can be added for texture and style. Use these fun tassels to adorn bags, totes and belts, or to function as key fobs or jewelry. They add movement and fashion forward style to your projects. Plus, they are easy to make!



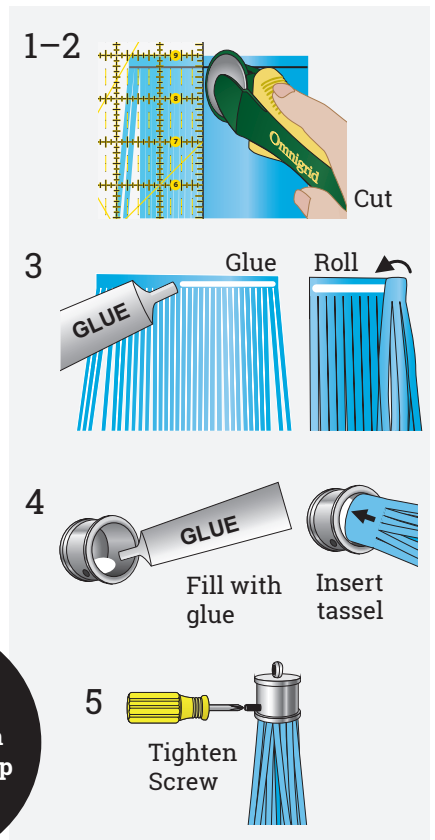
Items #823, 824 and 826 What are the parts?

Each package includes one Tassel Cap with a set screw. Style 826 has 2 set screws.



How to you use a Tassel Cap?

1. Cut 7"–9" of fringe, or a piece of leather measuring about 6"–8" x desired length. Inside measurement of cap varies, so fringe amount or leather size should be tested first.
2. For leather, mark a line 3/8" from top edge. Use a rotary cutter, mat and grid-marked ruler to cut leather into 1/8" strips, stopping at top line.
3. Apply glue along wrong side of top edge of fringe. Roll fringe up tightly. Hold with a clip until glue is dry.
4. Fill cap about 1/4 full with glue. Insert tassel into cap.
5. Insert set screw into small hole on side of cap. Use a tiny Phillips head screwdriver to gently tighten set screw. Don't over-tighten.



TIP: Wrap fabric or matching yarn around #824 cap as an accent!

