

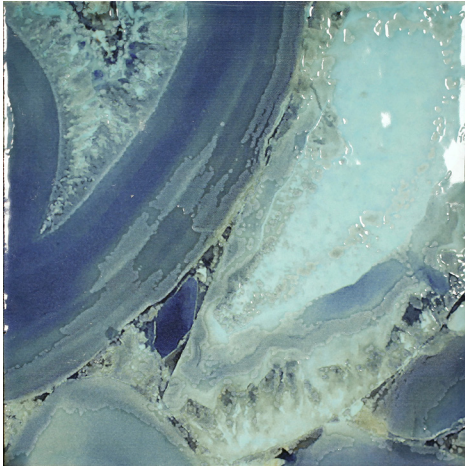
The many benefits of tile extend to the outdoors with Immerse™ Porcelain tile as a prime example. Designed for walls, in addition to being pool-rated, let your imagination take over with a one-of-a-kind design featuring three splashy colors: Cobalt, Aqua and Teal.

# IMMERSE™

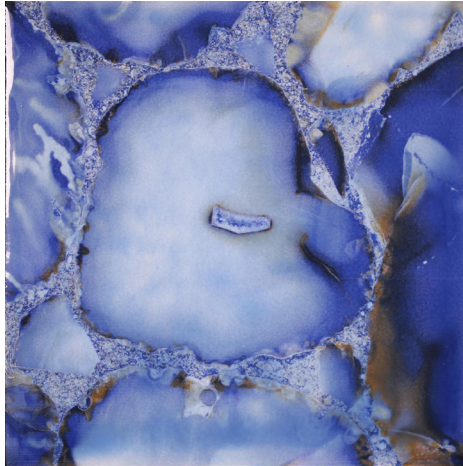
*Glazed Porcelain*



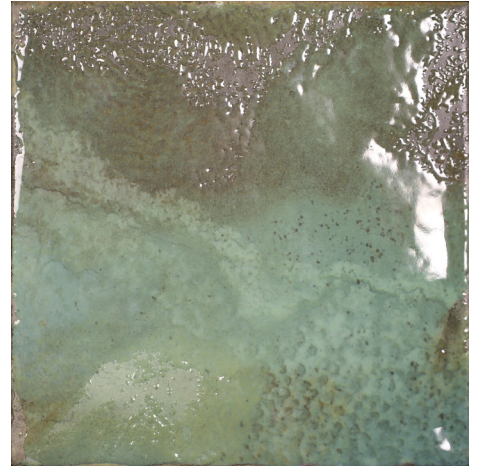




Aqua

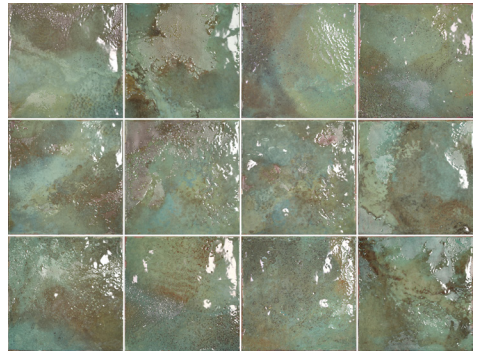
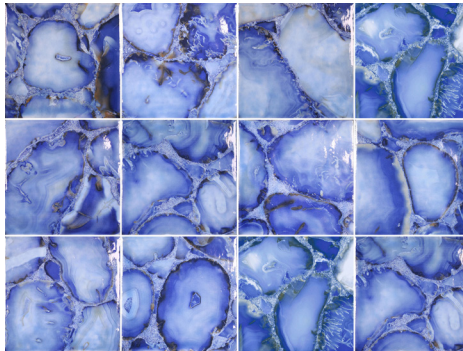
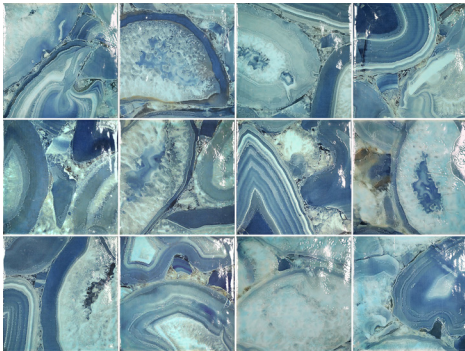



Cobalt



Teal

Variation:



Sizes  6" x 6" 5.85" x 5.85"					
	Thickness 9mm				
	Grout Joint Recommendation 1/8"				
Testing C648	Breaking Strength C650	Chemical Resistance C373	Water Absorption C373	Scratch Hardness MOHS	Shade Variation Rating
Results*	>250 lbf	Resistant	<1.0%	4	V4

- Sustainability Attributes**
- Health Product Declaration (HPD) provided upon request
  - Product Packaging is 100% recyclable
  - VOC Free

\*For more information visit [www.emser.com](http://www.emser.com). Always consult a professional for proper usage and installation.