

Gas Valve

REPLACEMENT INSTRUCTIONS

Kit Name	Gas Valve Replacement Kit
Kit Part Number	803000052
Compatible Rinnai Products	Rinnai Commercial Boiler Models: RCB301AN and RCB399AN

WARNING Failure to correctly assemble the components according to these instructions may result in electric shock, injury, or death.

CAUTION To protect yourself from harm, follow the steps below before proceeding.

- Disconnect the electrical power supply by turning off the electricity at the circuit breaker.
- Shut off the gas at the gas valve, usually located near the gas connection at the appliance.
- Turn off the water by closing manual ball valves at the return and supply piping connections at the appliance.

Items Inside Product Box

Before installations, please make sure all parts are located inside the product box.

Table 1

Item #	Item (Part Number)	Qty
1	Gas Valve (806000058)	1
2	Gas Valve O-Ring (809000204)	2
3	Screw, M5 x 33 mm (809000267)	2
4	Screw, M5 x 12 mm (809000205)	6
5	Venturi Gasket (809000236)	1

TOOLS/MATERIALS REQUIRED

- Phillips Head Screwdriver
- 4 mm Allen Wrench
- Adjustable Wrench
- Tongue and Groove Plier

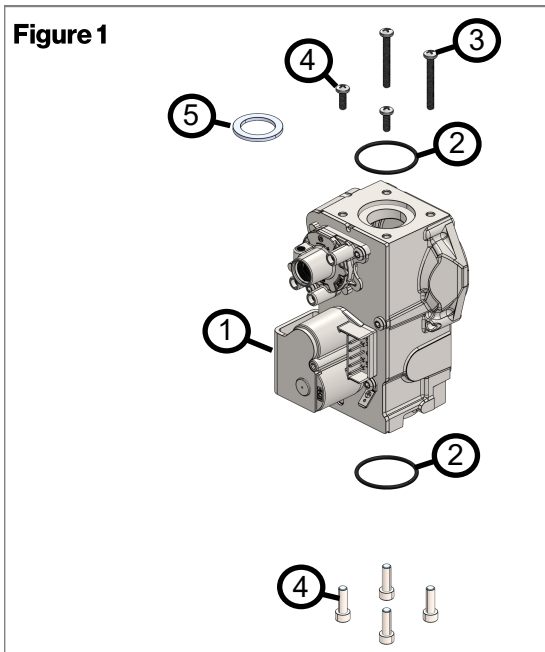
Instructions

IMPORTANT

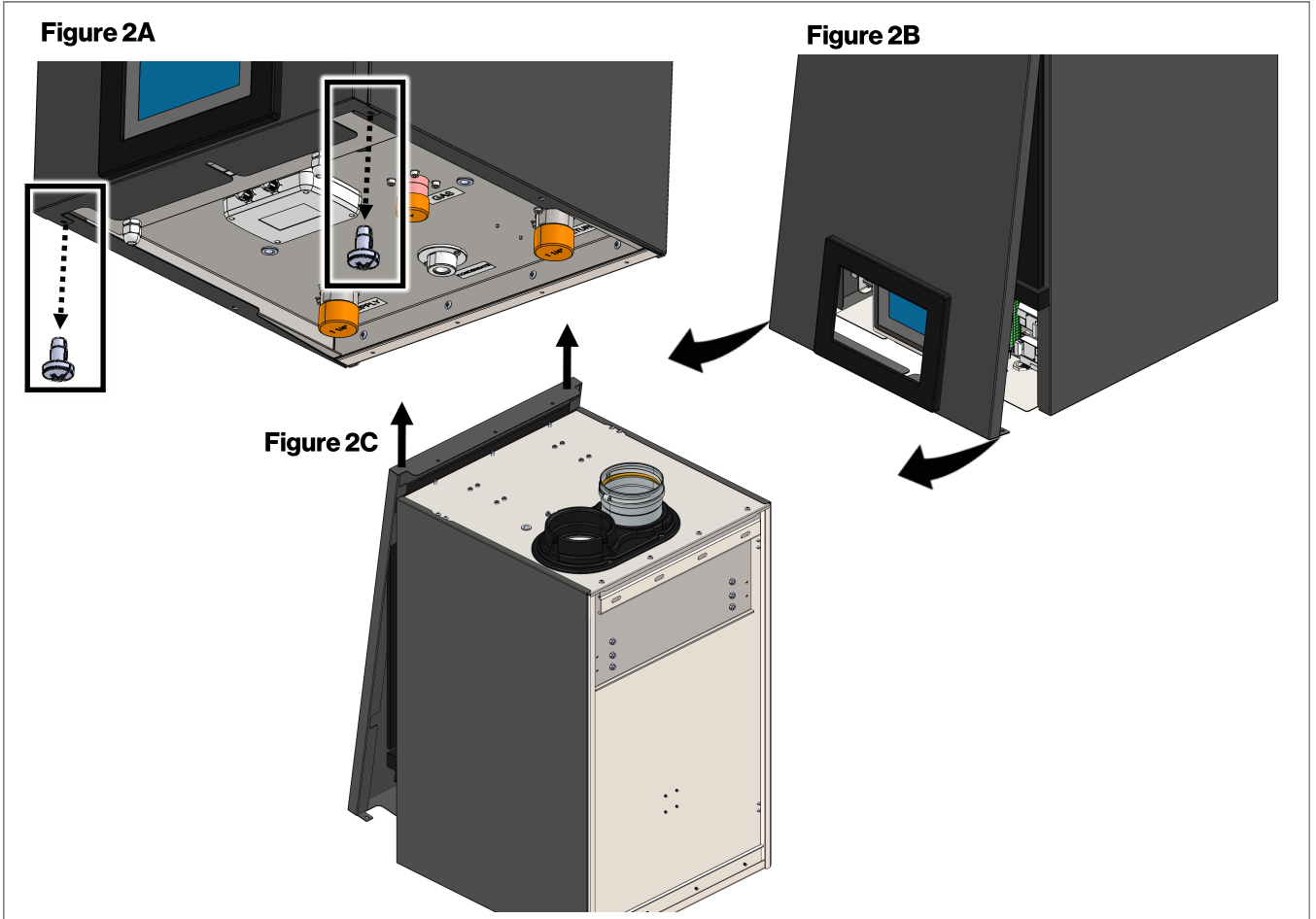
When following the instructions in this document, inspect any existing O-rings and/or gaskets carefully, taking care not to scratch, damage, or misplace the O-rings and/or gaskets.

1. Turn off and disconnect 120 V power supply.
2. Turn off water supply.
3. Turn off gas supply.

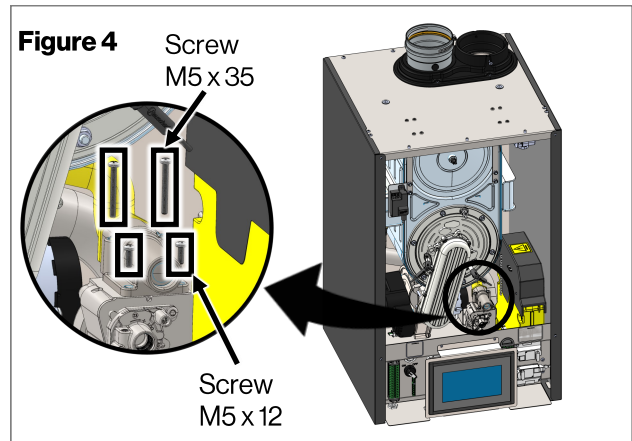
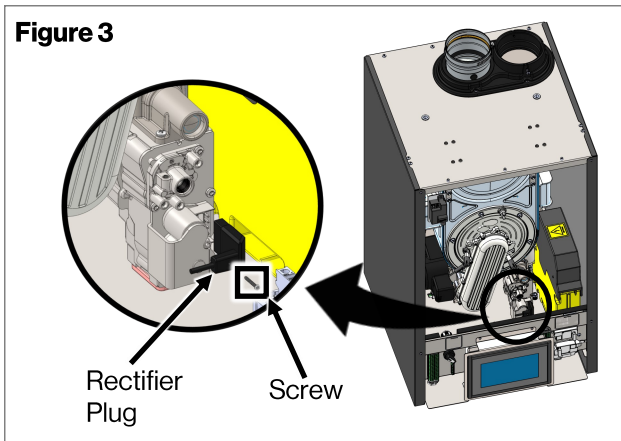
CAUTION Confirm gas valve is turned off and not leaking. Use gas valve switch to prevent gas valve from being turned on.



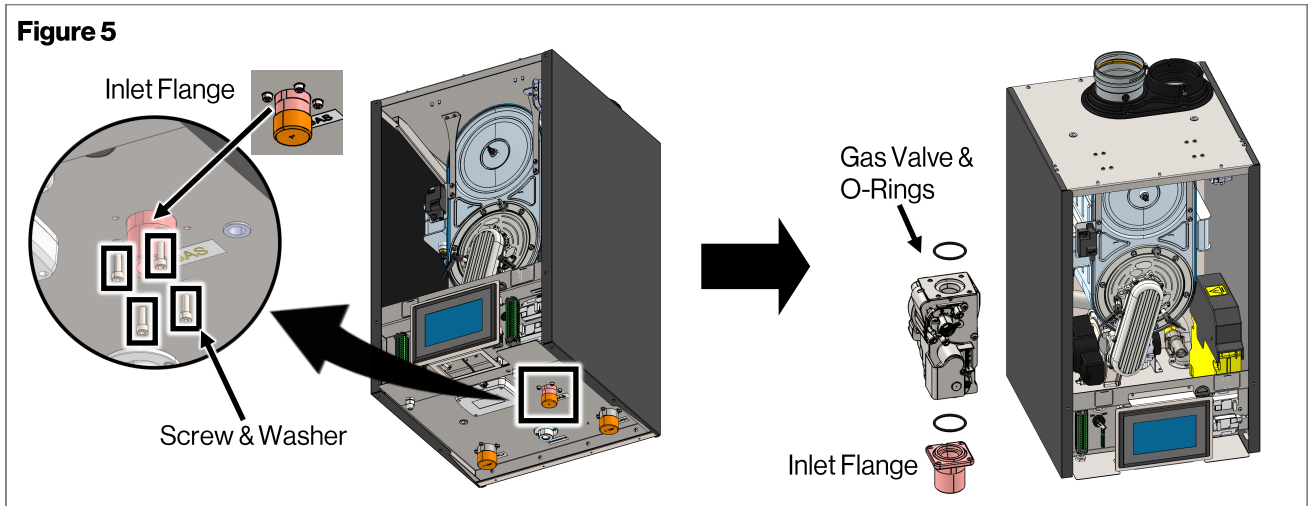
- Use a Phillips head screw driver to remove two screws located on the bottom of the appliance securing the front panel (Figure 2A). Pull out the bottom of the front panel to clear the display assembly (Figure 2B), then move the front panel up to clear the pins located on top of the appliance (Figure 2C).



- Use a Phillips head screwdriver to remove the screw holding rectifier plug on gas valve and disconnect the plug (Figure 3).
- Use a 4mm Allen wrench to remove four (4) screws securing throttle adapter to the gas valve (Figure 4).

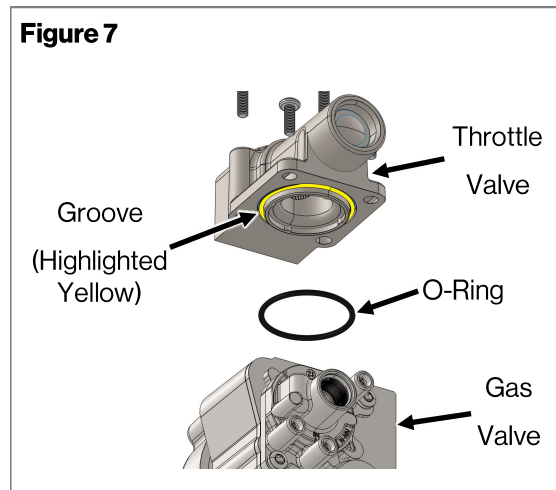
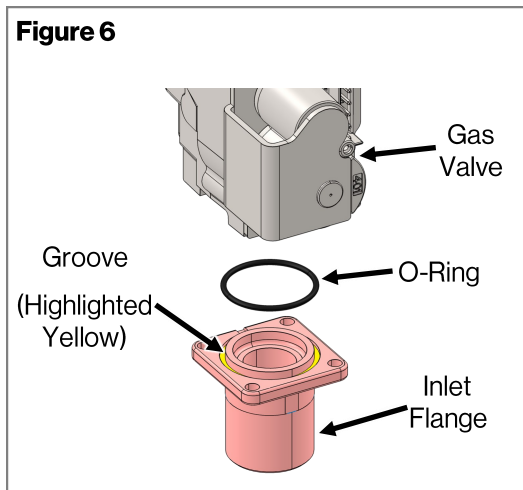


- Use a 4 mm Allen wrench to remove four screws from the bottom of the unit. Remove the gas valve with two O-rings. Inlet flange stays on the unit and will be reassembled with new gas valve (Figure 5).



Gas Valve Reassembly

- Reassemble the new gas valve with O-ring and inlet flange using four new screws (Figure 5). Ensure that the O-ring is secured in the inlet flange groove between inlet flange and gas valve (Figure 6).
- Reassemble throttle valve with new O-ring on gas valve using two of new M5 x 12 screws and two of new M5 x 33 mm screws (Figure 4). Ensure that the new O-ring is secured in the throttle valve groove between throttle valve and gas valve (Figure 7).



- Reconnect rectifier plug on gas valve and secure it using the screw (Figure 3).
- Reconnect and turn on 120 V power supply, water supply and gas supply.
- Perform leak detection test for gas.
- Follow instruction in the I/O manual to check for proper combustion setting and proper boiler operation.
- After all checks have been successfully completed, line up front panel assembly with pins located on top side on boiler and secure using two screws on bottom (Figure 2A, 2B & 2C).