

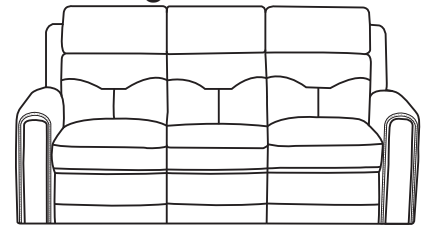
# FLEXSTEEL®

## Power Reclining Sofa with Power Headrest, Lumbar, Heat & Massage

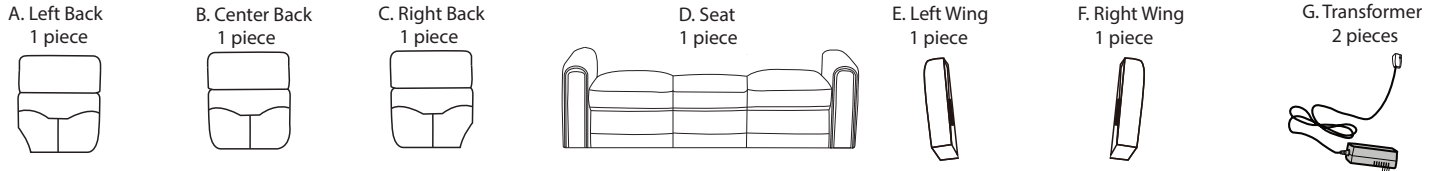
### IMPORTANT NOTE

Read these instructions carefully and familiarize yourself with each procedure before assembling the furniture. Check that you have all the component parts and familiarize yourself with each part before proceeding.

Take all the fittings out of the plastic bag and separate them into groups. Ensure you have enough space to lay out all the parts before assembly. To prevent damage to the parts, we recommend that you assemble the unit on a soft, level surface.



### Part List



### Assembly Instructions

#### STEP 1

Detach the Transformers (G), and the Wings (E F) from the bottom of the Seat (D). (See Figure 1.)

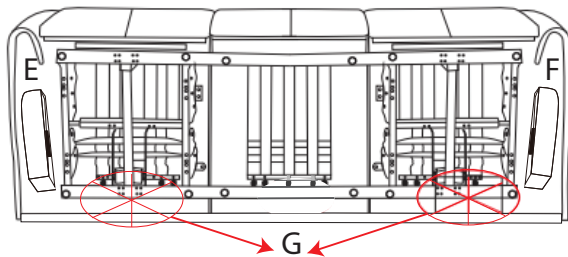


Figure 1

#### STEP 2

Attach the Backs (A B C) to the Seat (D), Left Wing (E) to the Left Back (A) and Right Wing (F) to the Right Back (C). Ensure the latches fit well. (See Figure 2.)

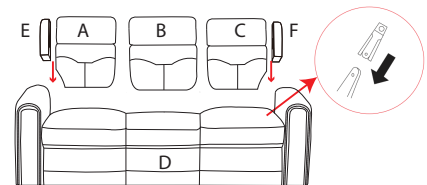


Figure 2

#### STEP 3

Zip the fabric on the bottom of the Backs (A C) with the back of the Seat (D). (See Figure 3.)

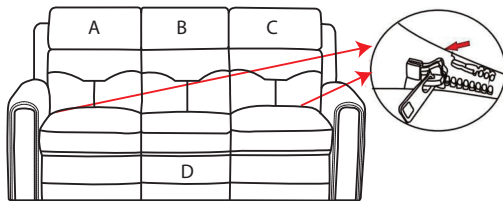
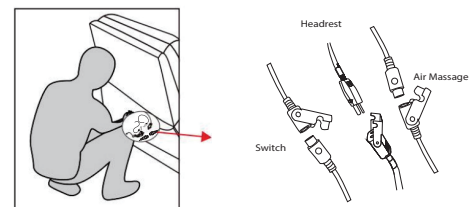


Figure 3

#### STEP 4

Flip up the back flaps, connect the Headrest, Switch and Air Massage cables between the Backs (A C) and the Seat (D). (See Figure 4.)



#### STEP 5

Fasten the back flaps to the bottom of the furniture. (See Figure 5.)

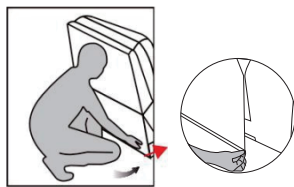


Figure 5

#### STEP 6

Connect both of the power cables on the back of the Seat (D) to a Transformer (G), then plug the Transformers (G) into the nearby outlets. (See Figure 6.)

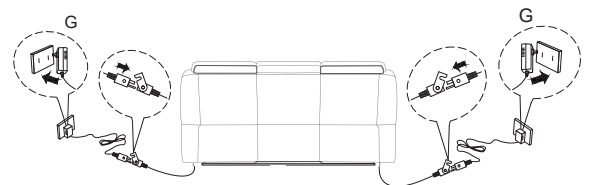


Figure 6

### Disassembly Instructions

Unzip the zipper between Backs (A C) and Seat (D), then disconnect all the cables. Pull up the spring leaf in bracket, then lift Backs (A B C) up. (See Figure 7.)

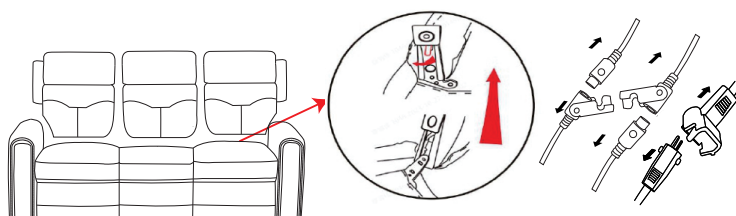
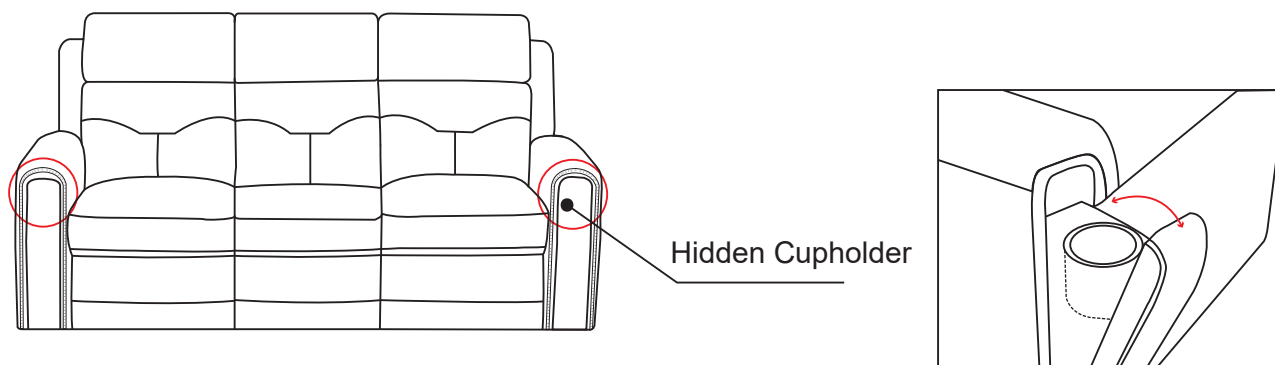


Figure 7

## Hidden Cup Holder



### IMPORTANT NOTE

- To avoid any risk of suffocation to children or pets, dispose of all plastic bags immediately.
- To ensure proper performance, occasionally check for loose hardware and tighten as needed.
- If the reclining functions are not working properly, check for loose cable connections before contacting the retailer.