



TEST REPORT

Report No: GTS20240514017-3-1

Applicant Dana Innovations (dba Sonance)

Manufacturer REDACTED

Sample Name Mariner MX speakers

Model/Type See model page

Test sort Commission Test



Shenzhen Global Test Service Co., Ltd.

Address: 1F, Building No. 13A, Zhonghaixin Science and Technology City, No. 12,
6 Road, Ganli Industrial Park, Buji Street, Longgang District, Shenzhen, Guangdong

telephone:
0755-26702000

portraiture:
0755-28717111

e-mail:
gts_sz@gtscert.com

web page :
<http://www.gtscert.com>



Sample name	Mariner MX speakers		
type specification	See model page		
client	Dana Innovations (dba Sonance)		
Address of the entrusting unit	991 CALLE AMANECER, SAN CLEMENTE, CA 92673 United States		
manufacturer	REDACTED		
Manufacturer address	REDACTED		
manufacturer	REDACTED		
Manufacturer address	REDACTED		
trademark	SONANCE	Sample serial number	---
Sample source	Customer sample delivery	Number of samples	17pcs
Date of inspection	2024.5.17	Date	2024.5.17 to 2024.5.30
Inspection items: IP66			
According to standards: IEC 60529:2013 Degrees of protection by enclosure (IP code)			
Inspection conclusion: Pass			
 (Seal of the testing institution)			
Tested by: JunwenTan <i>jwtan</i> On May 30,2024	Reviewed by: Wangxinkai <i>Xinkai Wang</i> On May 30,2024	Approved by: Jason Hu On May 30,2024	
Remarks:!			



Model page

93610 MARINER MX66 BLK、 93611 MARINER MX66 WHT
93612 MARINER MX86 BLK 、 93613 MARINER MX86 WHT
93604 MARINER MX52 BLK 、 93605 MARINER MX52 WHT
93614 MARINER MX52 SST BLK 、 93615 MARINER MX52 SST WHT
93616 MARINER MX62 SST BLK 、 93617 MARINER MX62 SST WHT
93608 MARINER MX62 BLK 、 93609 MARINER MX62 WHT
93606 MARINER MX56 BLK 、 93607 MARINER MX56 WHT

Overview of the test results

Numbe	Inspection items	Standard requirements	Result	deter mine
1.	IP6X	1. Dust: talc powder (75 μ m); 2. Test time: 8h continuous dust blowing; 3. Concentration: 2 kg/m ³ ; 4. Sample status during the test: the sample does not work during the test; 5. During the test, the test samples are placed in the test box, the pressure in the shell is kept below the atmospheric pressure by vacuum pump, the maximum pressure difference is 2 kPa, the pumping rate is lower than 40 times the shell volume per hour, and the pumping rate is continuously pumped for 8h.	At the end of the test, the sample has no dust-entering phenomenon.	Pass
2.	IPX6	1. Nozzle inner diameter: 12.5mm; 2. Water flow rate: (100 \pm 5) L/min; 3. Water pressure: adjust the water flow rate according to the regulations; 4. Test time: at least 3min; 5. The distance between the nozzle and the shell surface: 2.5m~3m.	At the end of the test, the sample has no water intake phenomenon.	Pass

Inspection requirements and results

Testing items: IP6X

- 1) Basis of detection:
IEC600529:2013 Degrees of protection provided by enclosure (IP code)
- 2) Inspection method and description:
 1. Dust: talc powder (75 μ m);
 2. Test time: 8h continuous dust blowing;
 - 3, Concentration: 2 kg/m³;
 4. Sample status during the test: the sample does not work during the test;
 5. During the test, the test samples are placed in the test box, the pressure in the shell is kept below the atmospheric pressure by the vacuum pump, the maximum pressure difference is 2 kPa, the pumping rate is lower than 40 times the shell volume per hour, and the continuous pumping is for 8h.
- 3) Determination basis:
Determination basis:
- 4) Test data:

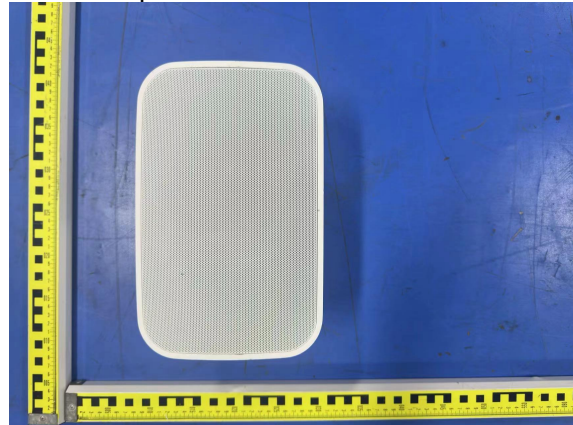
Sample 93604 MARINER MX52 BLK



Sample placement status



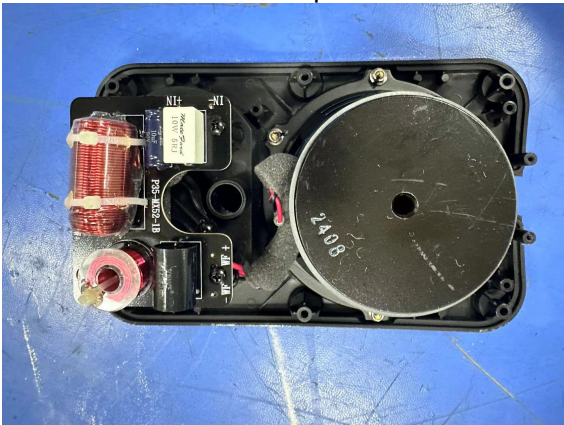
Sample 93605 MARINER MX52 WHT



Sample placement status

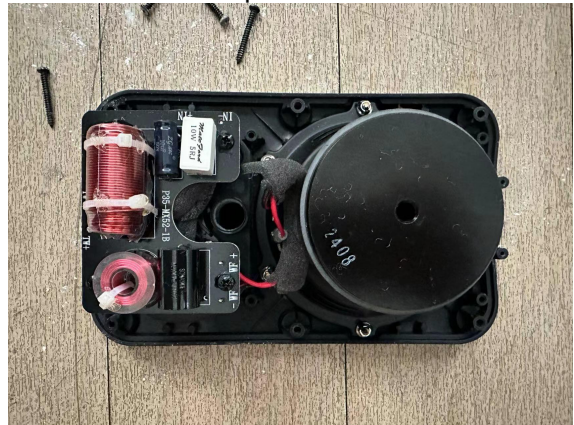


After the experiment



Sample 93610 MARINER MX66 BLK

After the experiment



Sample 93611 MARINER MX66 WHT



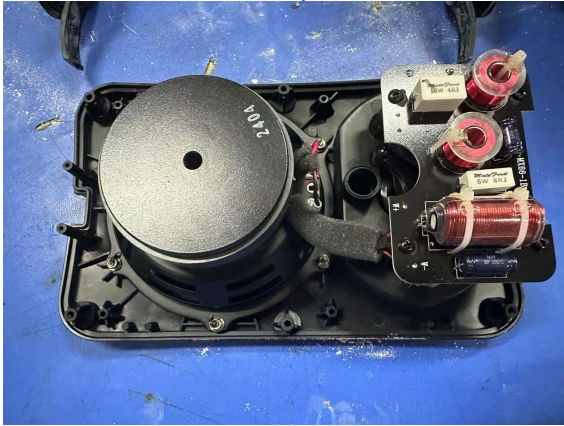
Sample placement status



Sample placement status

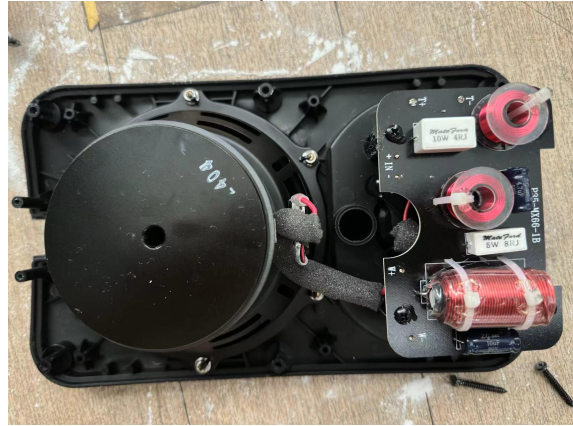


After the experiment



Sample 93612 MARINER MX86 BLK

After the experiment



Sample 93613 MARINER MX86 WHT



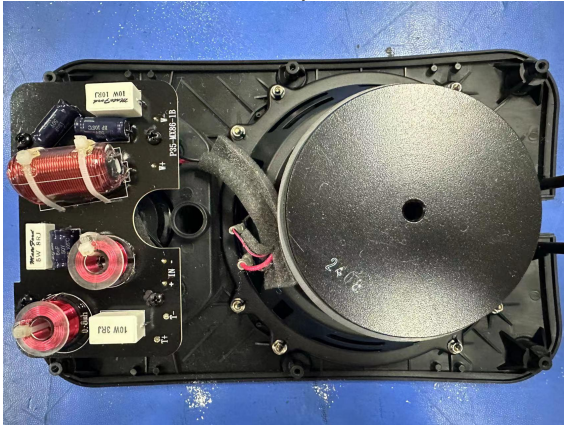
Sample placement status



Sample placement status



After the experiment



93608 MARINER MX62 BLK

After the experiment



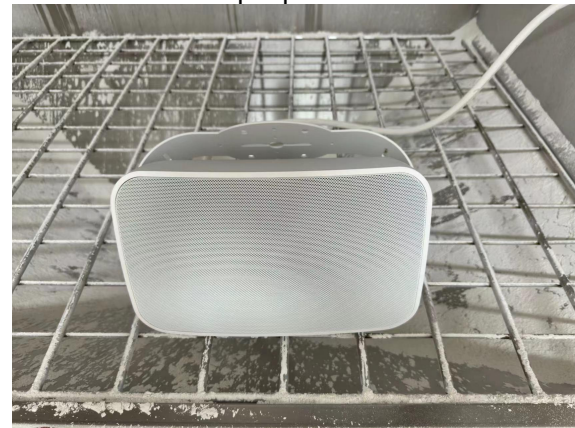
93609 MARINER MX62 WHT



Sample placement status



Sample placement status



After the experiment



93616 MARINER MX62 SST BLK

After the experiment



93617 MARINER MX62 SST WHT



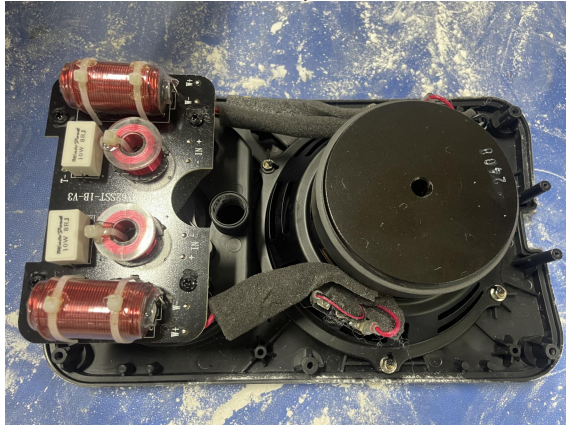
Sample placement status



Sample placement status

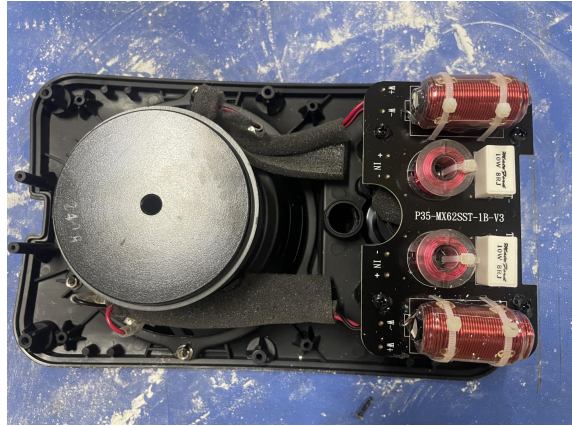


After the experiment



93614 MARINER MX52 SST BLK

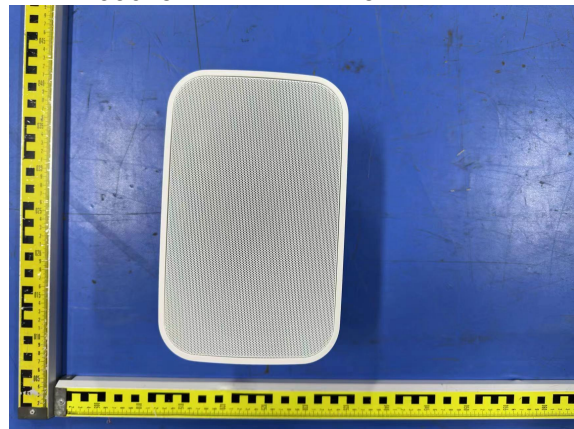
After the experiment



93615 MARINER MX52 SST WHT



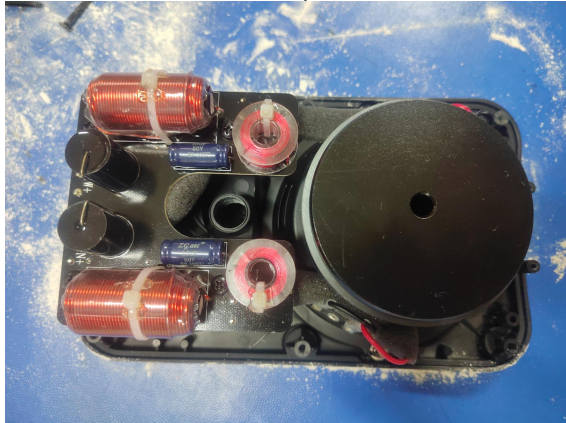
Sample placement status



Sample placement status

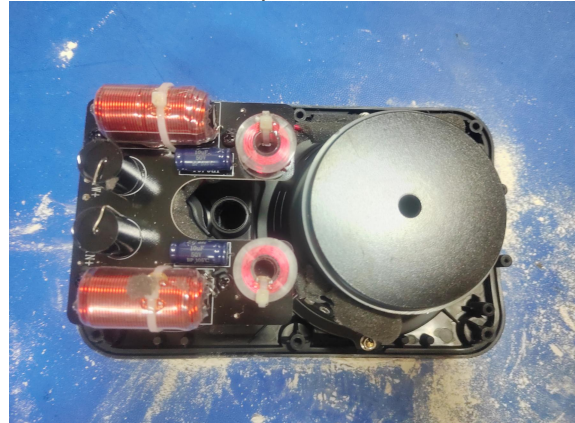


After the experiment



93614 MARINER MX52 BLK

After the experiment



93615 MARINER MX52 WHT



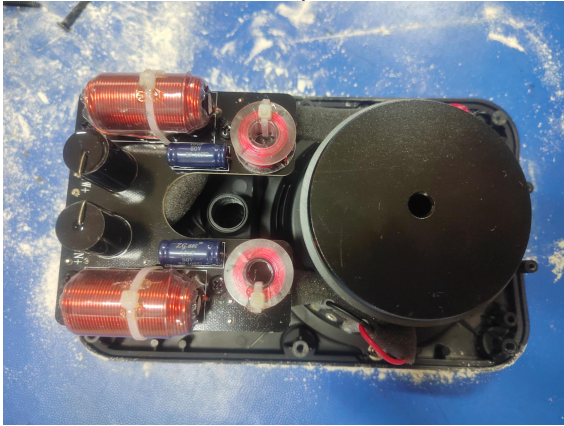
Sample placement status



Sample placement status



After the experiment



After the experiment



5) Test result: after the test, the sample has no dust entering phenomenon, and the test is qualified.

Inspection requirements and results

surveillance project:IPX6

1) Basis of detection:

IEC600529:2013 Degrees of protection provided by enclosure (IP code)

2) Inspection method and description:

1. Nozzle inner diameter: 12.5mm;
2. Water flow rate: (100 ± 5) L/min;
3. Water pressure: adjust the water flow rate according to the regulations;
4. Test time: at least 3min;
5. The distance between the nozzle and the shell surface: 2.5m~3m.

3) Determination basis:

After the IPX 6 test, there should be no water inside the sample, and the power-on is normal. For water intake, shall not:

- 1) Enough to interfere with the correct operation of the equipment or damage the safety;
- 2) Deposition on insulation parts that may lead to creepage distance tracking;
- 3) Touch the live parts or windings that are not suitable for operation in a wet environment;
- 4) Gather together or enter the cable near the end of the cable.

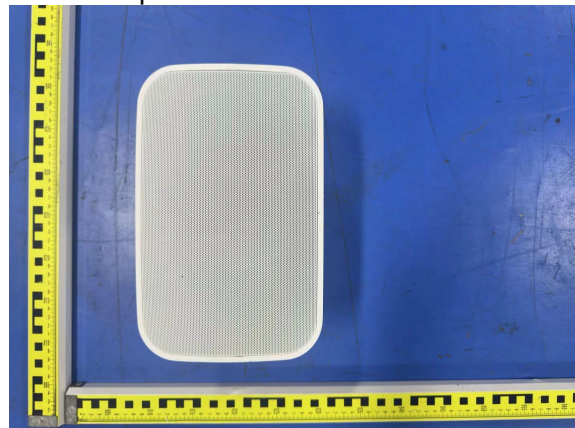
4) Test data:

Sample 93604 MARINER MX52 BLK

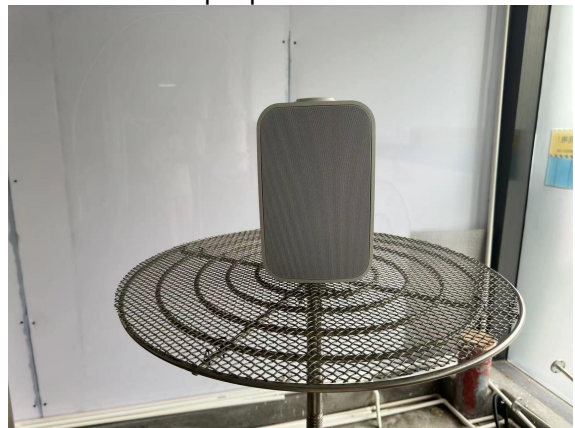
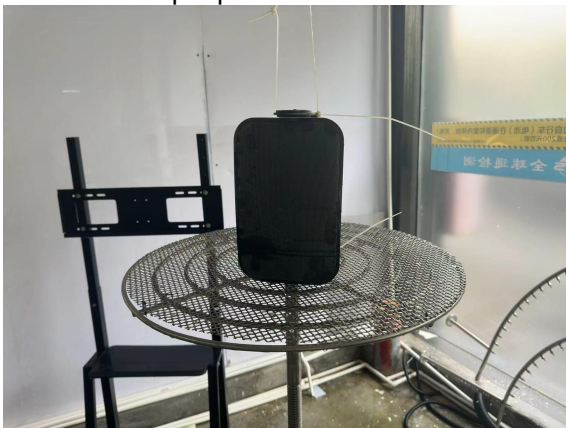


Sample placement status

Sample 93605 MARINER MX52 WHT



Sample placement status



After the experiment



Sample 93610 MARINER MX66 BLK

After the experiment



Sample 93611 MARINER MX66 WHT



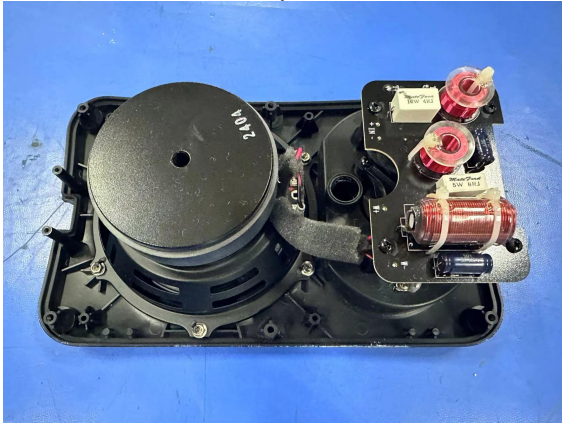
Sample placement status



Sample placement status



After the experiment



Sample 93612 MARINER MX86 BLK

After the experiment



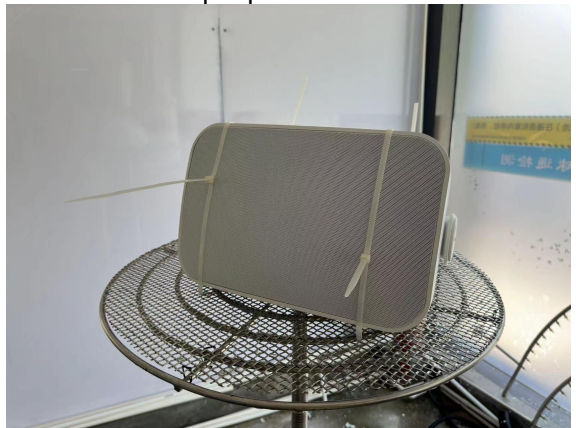
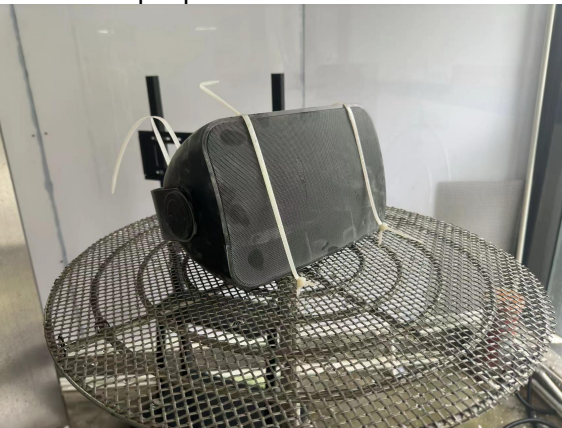
Sample 93613 MARINER MX86 WHT



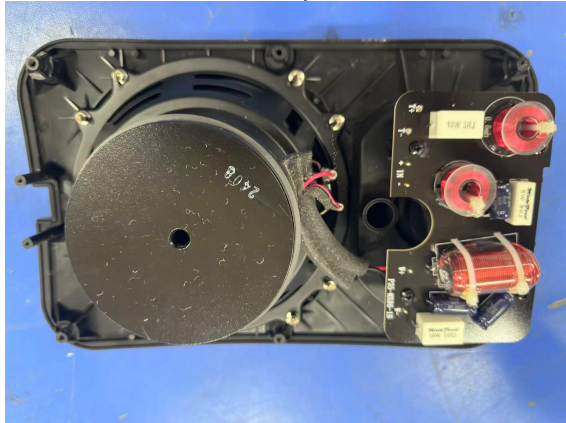
Sample placement status



Sample placement status

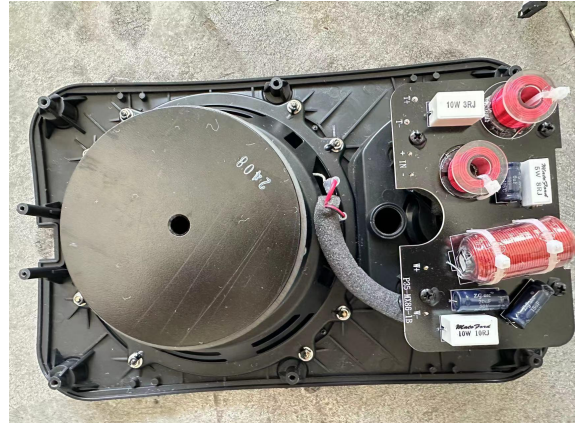


After the experiment



93608 MARINER MX62 BLK

After the experiment



93609 MARINER MX62 WHT



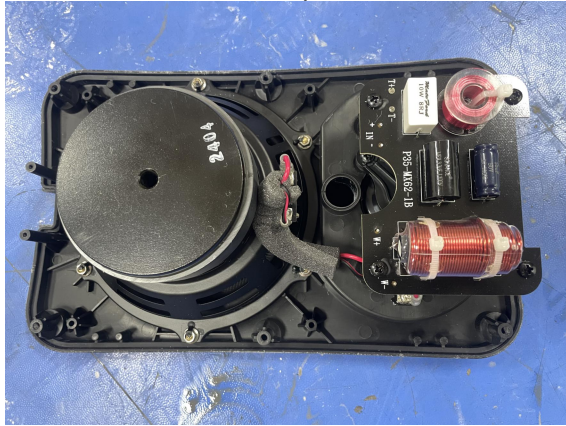
Sample placement status



Sample placement status



After the experiment



93616 MARINER MX62 SST BLK

After the experiment



93617 MARINER MX62 SST WHT



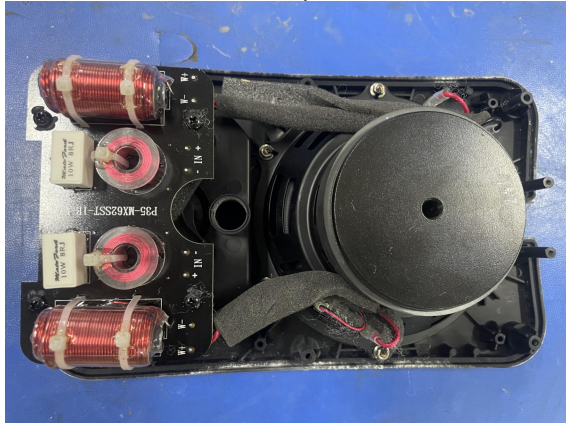
Sample placement status



Sample placement status



After the experiment



93614 MARINER MX52 SST BLK

After the experiment



93615 MARINER MX52 SST WHT



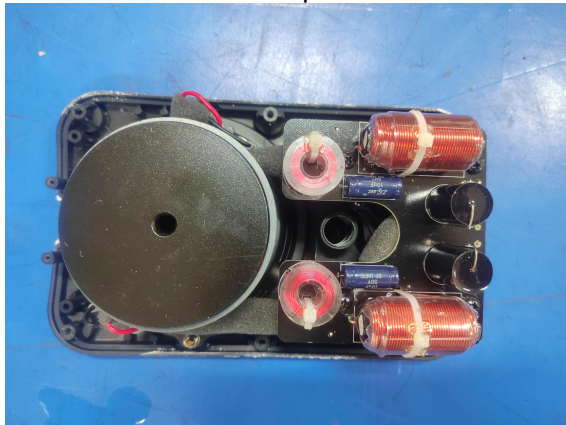
Sample placement status



Sample placement status

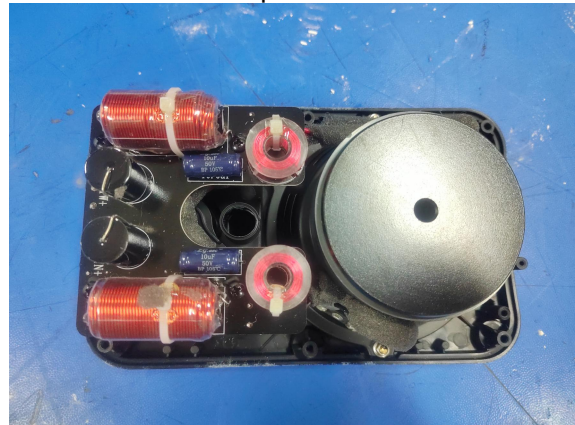


After the experiment



93614 MARINER MX52 BLK

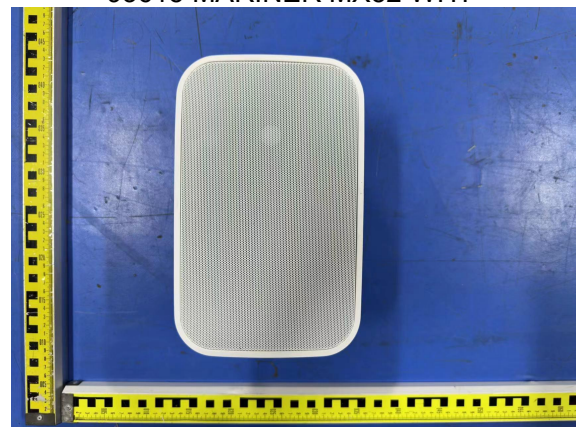
After the experiment



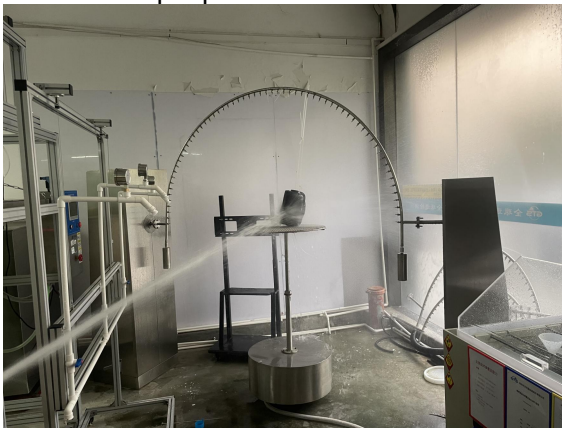
93615 MARINER MX52 WHT



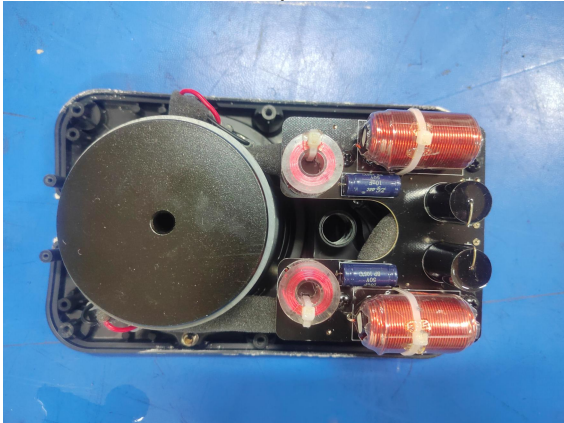
Sample placement status



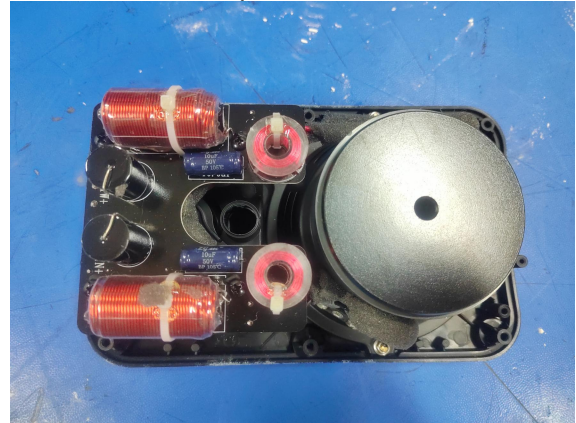
Sample placement status



After the experiment



After the experiment



5) Test result: after the test, the sample has no water intake phenomenon, and the test is qualified.

Sample photographs

93604 MARINER MX52 BLK



93605 MARINER MX52 WHT



Sample photographs

93610 MARINER MX66 BLK



93611 MARINER MX66 WHT



Sample photographs

93612 MARINER MX86 BLK



93613 MARINER MX86 WHT



Sample photographs

93608 MARINER MX62 BLK



93609 MARINER MX62 WHT



Sample photographs

93616 MARINER MX62 SST BLK



93617 MARINER MX62 SST WHT



Sample photographs

93614 MARINER MX52 SST BLK



93615 MARINER MX52 SST WHT



Sample photographs

93614 MARINER MX52 BLK



93615 MARINER MX52 WHT





Testing facility

number	device name	model	Number / serial number	manufacturer	Calibration is valid until
1	Dust test box	YK-1210B-1000Z	GSE0418	Dongguan Youke Automation Equipment Co., LTD	2025/04/26
2	Waterproof equipment	IPX3456	GSE0147	Wordt	2025/05/08

Note: The above instruments and equipment are all within the metrological verification period.

The report is over



Statement

- 1. The report is invalid without "special seal".**
- 2. The report is invalid without testing and the signature of the approving personnel.**
- 3. The report alteration is invalid.**
- 4. The test conclusion of the self-sent samples is only valid for the sent samples.**
- 5. This report shall not be reproduced in part without the permission.**
- 6. If there is any objection to this report, you may appeal to the unit within 15 days after receiving the report, and the overdue application will not be accepted.**